



PRICED AT
\$1,052,640

 2347 Sq Ft

 4 Beds

 3.5 Baths

 2 Car Garage

 3.0 Story

FALL INTO SAVINGS! READY NOW~END UNIT~ The Chaucer Home Design features 4 Bed / 3.5 Bath ~ FIREPLACE ~ OVERSIZED SPA SHOWER ~ FENCED IN BACKYARD ~ DESIGNER CURATED FINISHES ~ This beautiful home design sits over 25 ft wide with Bay Window on your main level- truly making this space feel abundantly bright, spacious, and open! Enjoy Hardwoods Throughout the home, 10 ft ceilings + oversized, split staircases featuring open railing providing views to your front door Foyer (perfect for statement foyer chandelier). Kitchen is mindfully situated in the rear of home overlooking HOA Maintained backyard. Home Site 12 features stacked white cabinets to the ceiling, with Quartz Waterfall Countertops, Undermount Sink, and Custom Pantry Shelving. Dinner Party prep made easy with GE Café Appliances including a gorgeous 36" Commercial Range w/ Gas Oven + Modern Designer Hood Vent + Café Dishwasher + plus an additional Café Double Wall Oven with Convection. Enjoy Covered Deck directly off kitchen with private views complete with ceiling fan. Dining Space Separates kitchen from your living room featuring a Ventless Linear Fireplace & Box Beam Mantel! TV Bracing, Smart Tubes, Media Outlets, and Wireless Access Points have been installed for easy setup. Upper-Level ...

Want to Know More
About This Home?

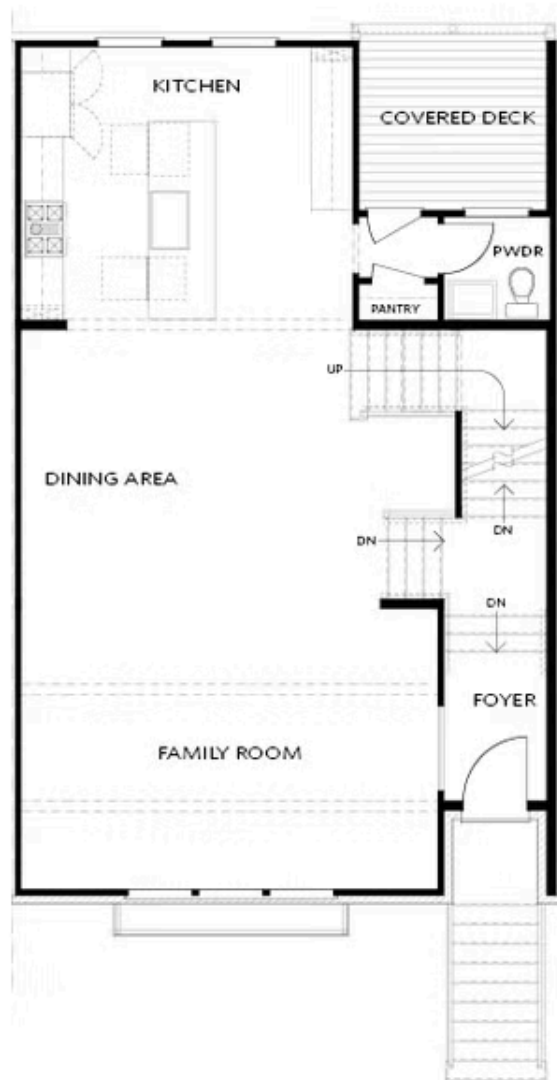
CONTACT OUR COMMUNITY SALES MANAGER
Call Us @ 470.248.2777



Elevation R

Want to Know More
About This Home?

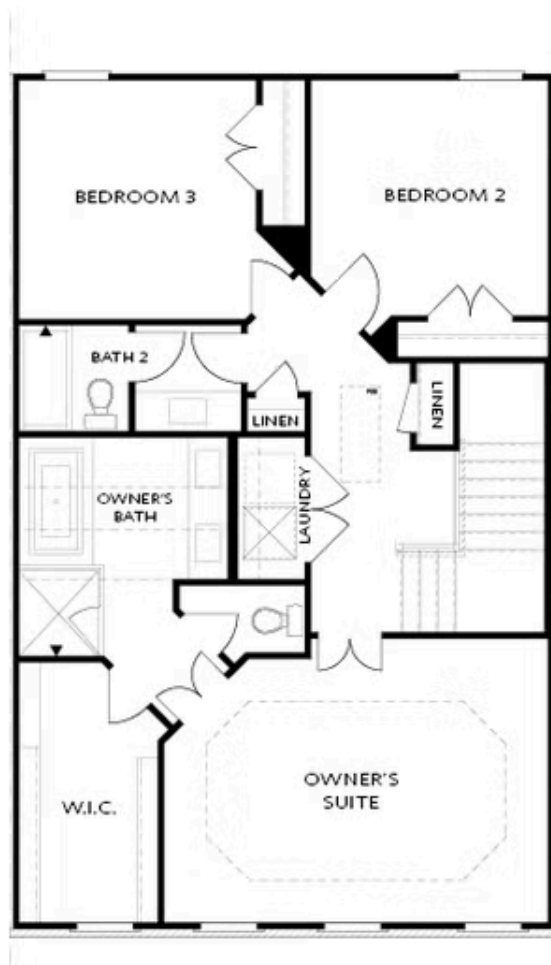
CONTACT OUR COMMUNITY SALES MANAGER
Call Us @ 470.248.2777



Elevation R

Want to Know More
About This Home?

CONTACT OUR COMMUNITY SALES MANAGER
Call Us @ 470.248.2777



Elevation R

Want to Know More
About This Home?

CONTACT OUR COMMUNITY SALES MANAGER
Call Us @ 470.248.2777



OPT Shower

FIRST FLOOR



OPT Fireplace



OPT Linear Fireplace

SECOND FLOOR



OPT Walk-Through Shower



OPT Freestanding Tub w. Seperate Shower

THIRD FLOOR

Want to Know More
About This Home?

CONTACT OUR COMMUNITY SALES MANAGER
Call Us @ 470.248.2777