

PRICED AT  
**\$1,011,995**

 2347 Sq Ft

 4 Beds

 3.5 Baths

 2 Car Garage

 3.0 Story

Spring into a New Home! \$20,000 Any Way You Want for Contracts Closed By March with 1 of our 4 Preferred Lenders! The Chaucer Plan showcases our largest plan sitting over 2300+ sq/ft and sits over 25 ft. wide. This 4-bedroom, 3.5-bathroom home is mindfully designed with your lifestyle in mind. With an oversized 2 car garage plus open under stair storage, you will be able to store bikes, coolers, and lawn chairs to enjoy Alpharetta's outdoor entertainment. Guests have the ability to park in your driveway and comfortably fit an additional 2 cars. The terrace level features a separate entrance from the fenced in the backyard. The covered patio allows for in-laws, college kids, or visitors to enter from the rear of the home without waking up the rest of the household. The oversized terrace bedroom features a full bathroom with upgraded walk-in shower. Split staircases lead you to the main, entertainment level. The kitchen is mindfully placed at the rear of the home enticing guest to use the whole main level. 2 walls of kitchen cabinetry and double ovens will make entertaining a breeze. Enjoy covered deck access of the kitchen (ideal for hanging TV's outside). The waterfall ...

**Want to Know More  
About This Home?**

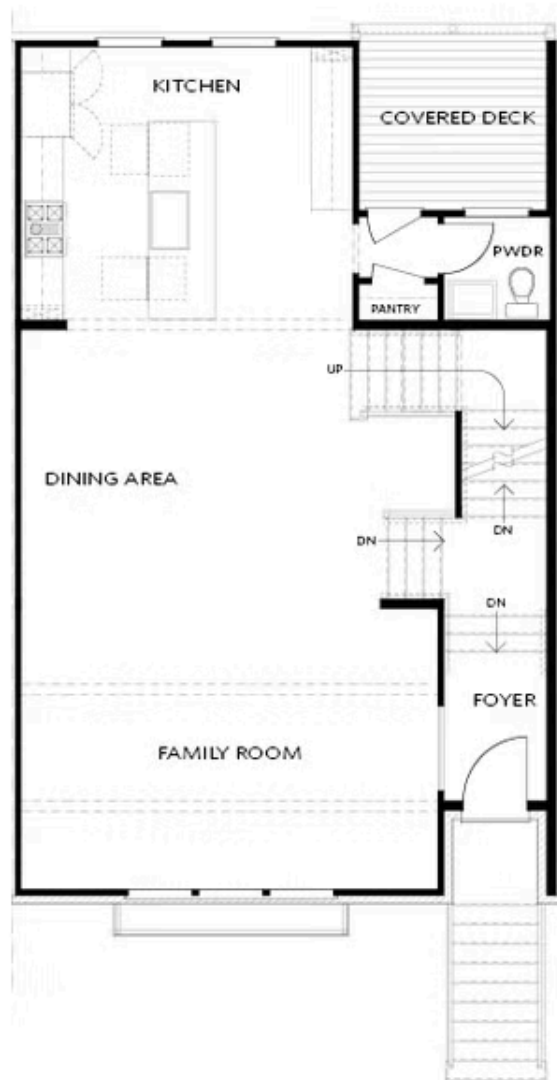
CONTACT OUR COMMUNITY SALES MANAGER  
Call Us @ 470.248.2777



Elevation R

Want to Know More  
About This Home?

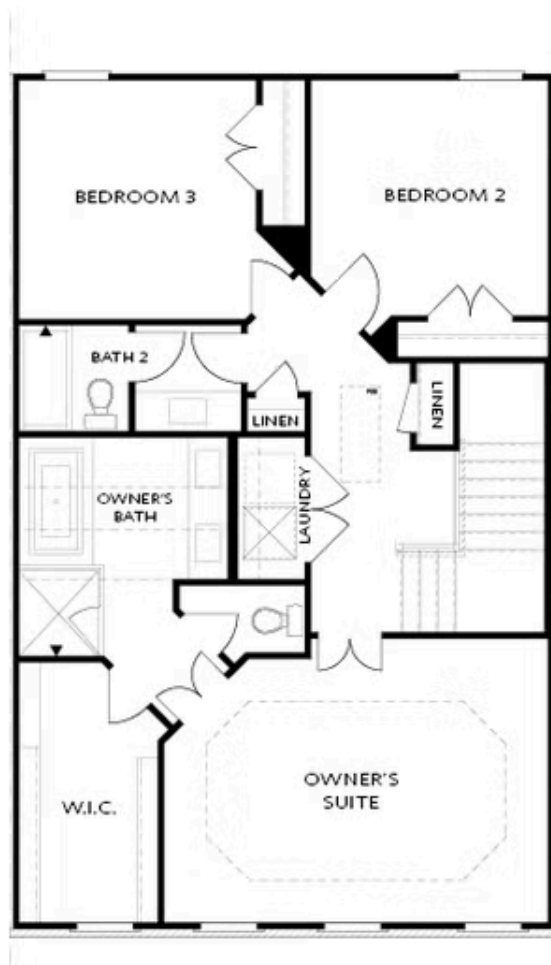
CONTACT OUR COMMUNITY SALES MANAGER  
Call Us @ 470.248.2777



Elevation R

Want to Know More  
About This Home?

CONTACT OUR COMMUNITY SALES MANAGER  
Call Us @ 470.248.2777



Elevation R

Want to Know More  
About This Home?

CONTACT OUR COMMUNITY SALES MANAGER  
Call Us @ 470.248.2777



OPT Shower

FIRST FLOOR



OPT Fireplace



OPT Linear Fireplace

SECOND FLOOR



OPT Walk-Through Shower



OPT Freestanding Tub w. Seperate Shower

THIRD FLOOR

Want to Know More  
About This Home?

CONTACT OUR COMMUNITY SALES MANAGER  
Call Us @ 470.248.2777