



PRICED AT
\$1,057,385

 2325 Sq Ft

 4 Beds

 3.5 Baths

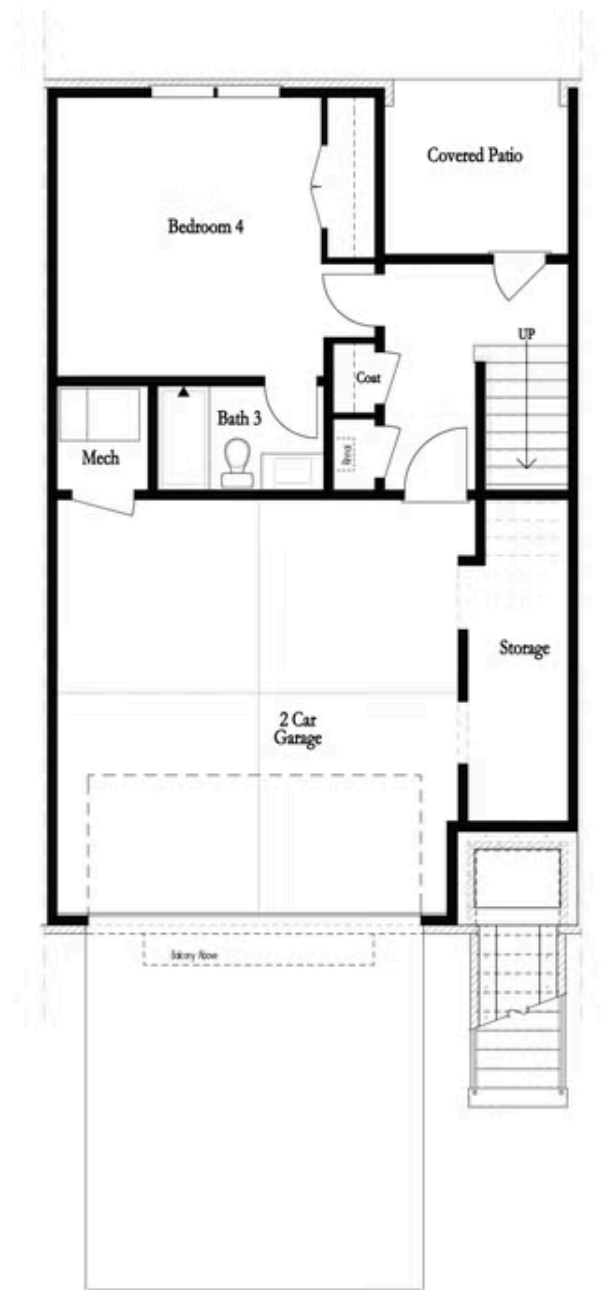
 2 Car Garage

 3.0 Story

Spring into a New Home! @ Towns on Thompson! \$45,000 Anyway You want for APRIL Contracts, Delayed Closing until June!! We have 5 Preferred Lenders that are available to help you with your mortgage needs! Ideally situated on Thompson Street separating Downtown Alpharetta from Avalon, the possibilities are endless in the heart of vibrant Alpharetta! ~LAST END UNIT + MODEL + FREE STANDING TUB + NEW ELEVATION~ Move In Ready! Home Site 7 just released for sale! New exterior elevation on home site 7 features 2 sets of French doors with covered balcony right off your living room!! The Chaucer Home Design showcases a front entry, 3 story townhome with 4 bedrooms & 3.5 bathrooms. The Chaucer sits over 25 ft wide making this space feel more like how a single family home lives. Enjoy open concept layouts with mindful outdoor patios and a fenced in backyard. Extra wide split staircases creates an elevated entryway with electrical options for your showcase chandelier. Kitchen sits in the back of home enticing guest into the home while the dining room separate the living room located in the front of home. 10 ft ceilings and back patios make this a great meeting home ...

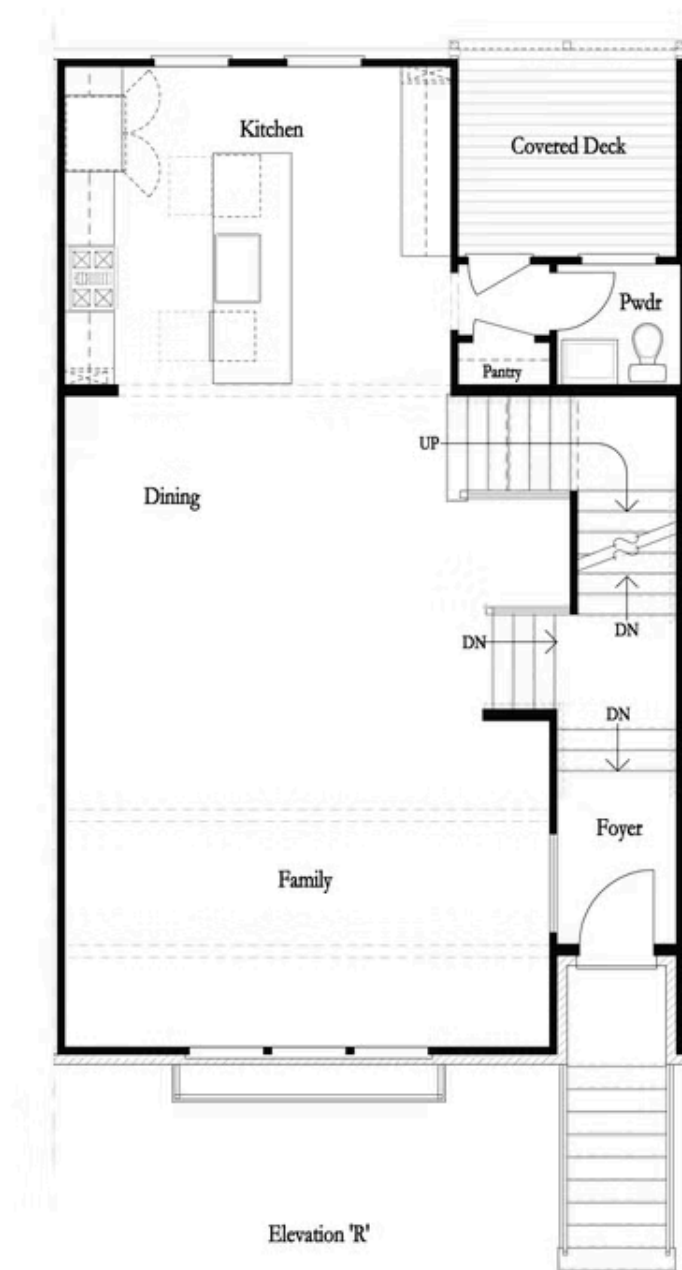
Want to Know More
About This Home?

CONTACT OUR COMMUNITY SALES MANAGER
Call Us @ 470.248.2777



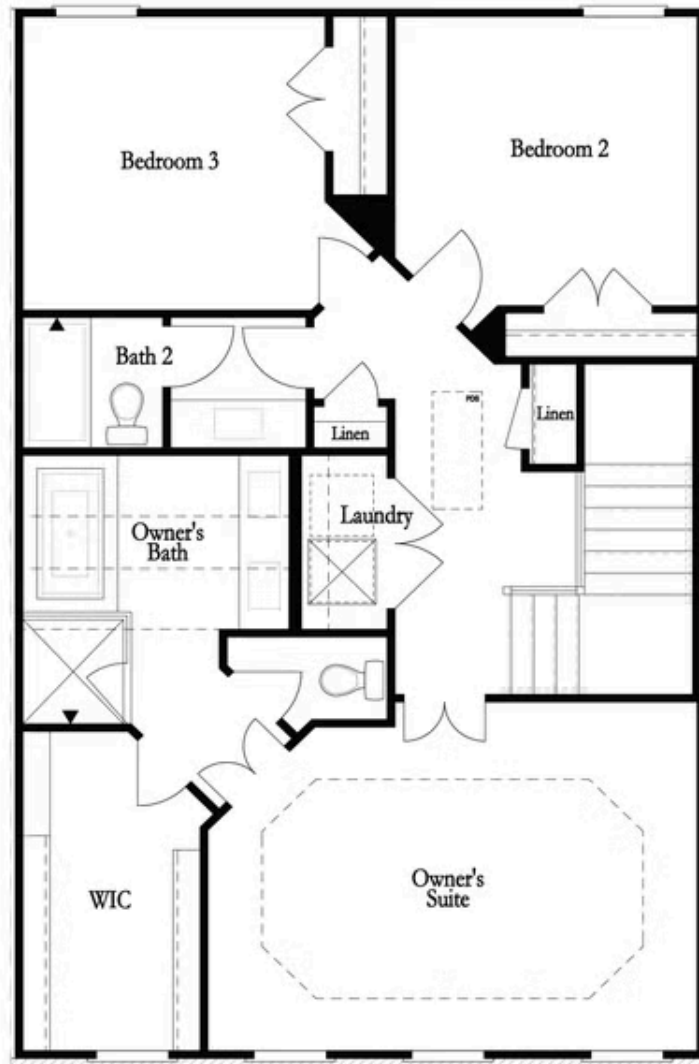
Want to Know More
About This Home?

CONTACT OUR COMMUNITY SALES MANAGER
Call Us @ 470.248.2777



Want to Know More
About This Home?

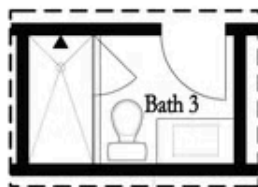
CONTACT OUR COMMUNITY SALES MANAGER
Call Us @ 470.248.2777



Want to Know More
About This Home?

CONTACT OUR COMMUNITY SALES MANAGER
Call Us @ 470.248.2777

Options



Optional Shower



Optional Fireplace



Optional Fireplace
Linear

First Floor Options



Optional Walk Through Shower



Optional Free Standing Tub
with Shower

Third Floor Options

Want to Know More
About This Home?

CONTACT OUR COMMUNITY SALES MANAGER
Call Us @ 470.248.2777