



PRICED AT
\$966,055

 2105 Sq Ft

 3 Beds

 3.5 Baths

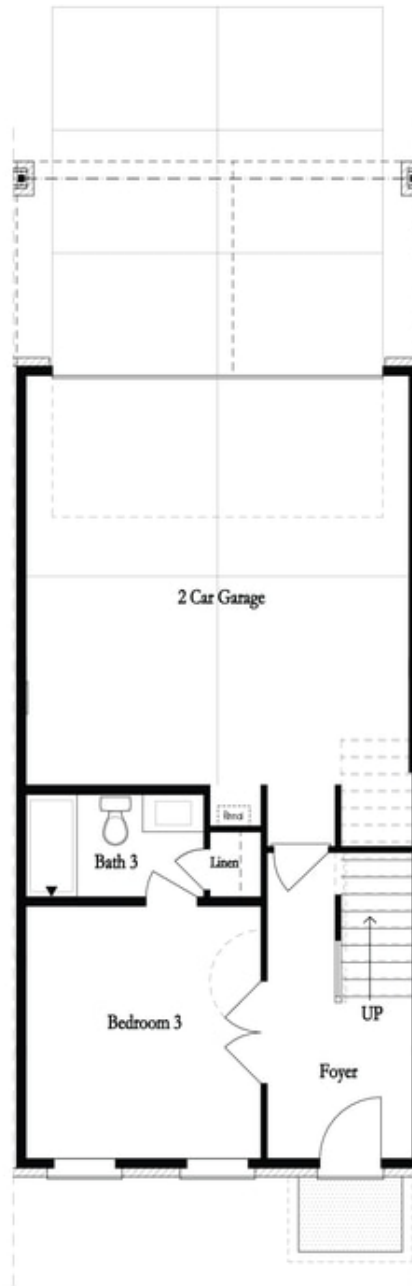
 2 Car Garage

 3.0 Story

***\$10,000 Summer Savings* LINEAR FIREPLACE ~ WALK THROUGH SHOWER ~ WATERFALL ISLAND ~ WALK IN SHOWER ON TERRACE LEVEL ~ Guest enter directly off Thompson Street presenting a beautiful street scape overlooking Thompson Street & Thompson Street Park. Owners park in the rear of home and enter from their 2 car garage w/ Electric Vehicle Charger into a welcoming foyer. French doors lead into the oversized terrace level bedroom with their own full bathroom with upgraded walk in shower. Oversized windows make this space a great office or guest bedroom. Buyers have the option to customize wall trim on the stairs as you make your way to the main level living. The open concept main level showcases the kitchen in the front of home with an oversized island displaying eloquent Cambria Quartz Waterfall Island. The living room is tucked towards the back of the home with a fireplace serving as the focus point. The Modern Linear Fireplace is showcased with Shiplap surround and built in on either side. A sunroom sits right off the living room providing additional seating or a swanky lounge area complete with direct deck access. The Upper level showcases an oversized master bedroom with delicate Shiplap ...**

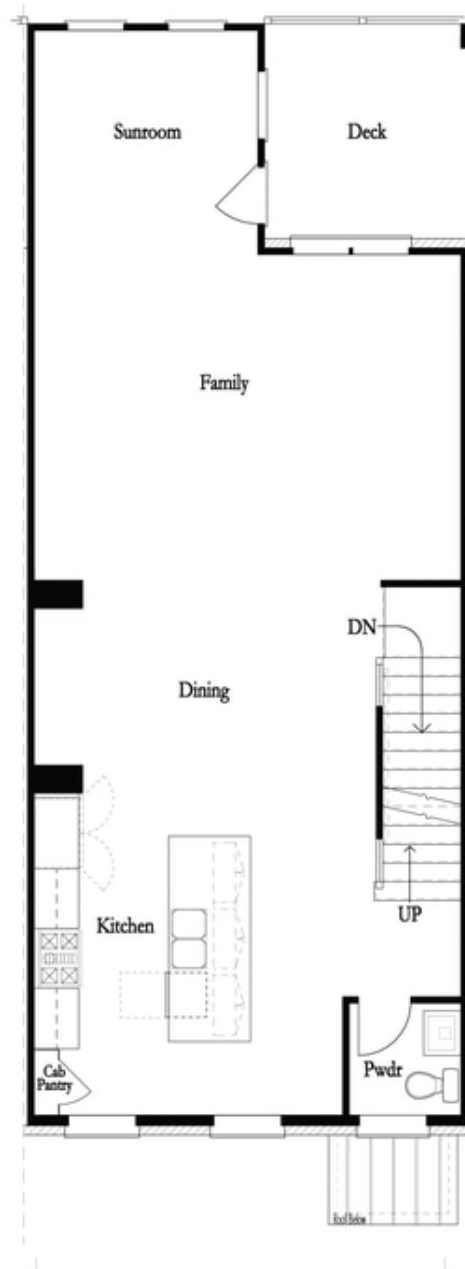
**Want to Know More
About This Home?**

CONTACT OUR COMMUNITY SALES MANAGER
Call Us @ 470.248.2777



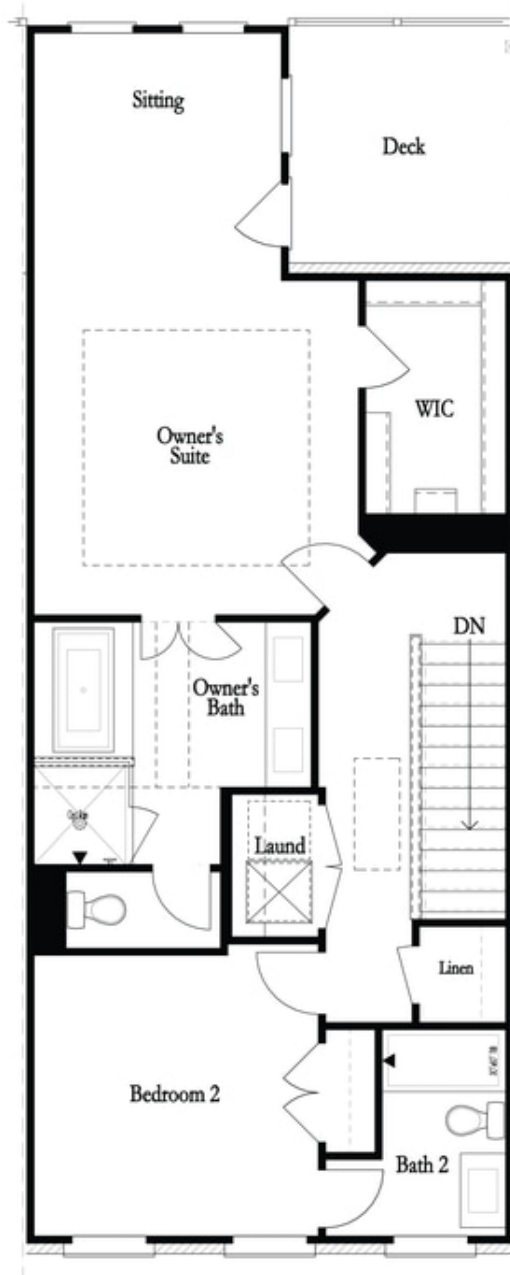
**Want to Know More
About This Home?**

CONTACT OUR COMMUNITY SALES MANAGER
Call Us @ 470.248.2777



**Want to Know More
About This Home?**

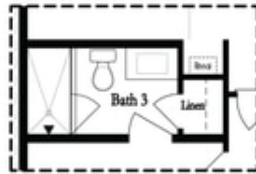
CONTACT OUR COMMUNITY SALES MANAGER
Call Us @ 470.248.2777



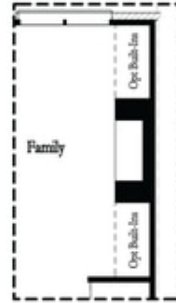
**Want to Know More
About This Home?**

CONTACT OUR COMMUNITY SALES MANAGER
Call Us @ 470.248.2777

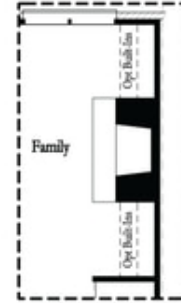
Options



Optional Shower



Optional Fireplace
 Linear



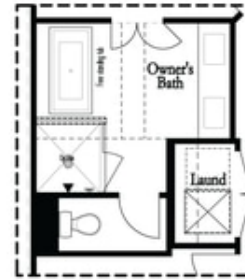
Optional Fireplace

First Floor Options

Second Floor Options



Optional Walk Through Shower



Optional Freestanding
 Tub / Shower Combo

Third Floor Options

**Want to Know More
 About This Home?**

CONTACT OUR COMMUNITY SALES MANAGER
 Call Us @ 470.248.2777