








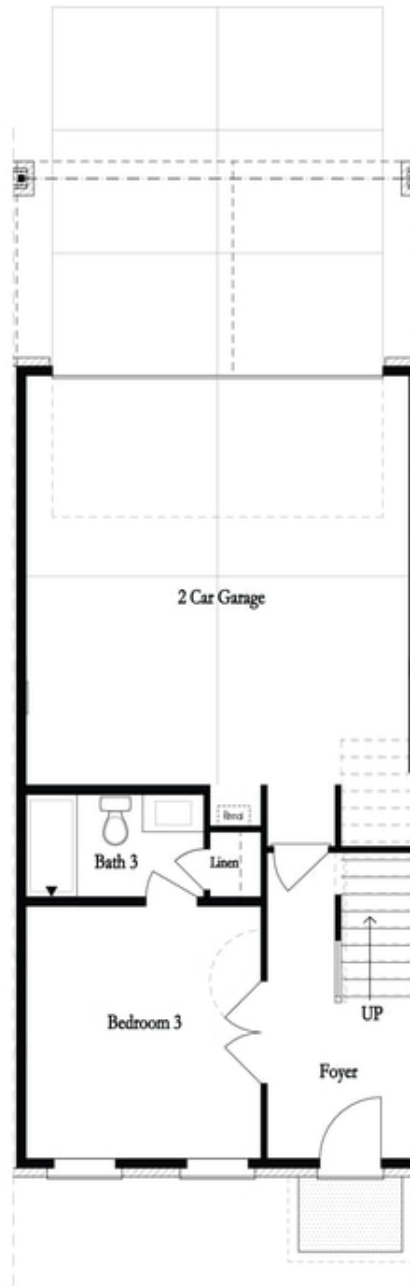
PRICED AT
\$969,660

-  2117 Sq Ft
-  3 Beds
-  3.5 Baths
-  2 Car Garage
-  3.0 Story

Modern & Luxury Finishes paired with Downtown Alpharetta easy living will make you fall in love with your New Construction Home! Home Site 37 sits right on Thomson Street, separating your Downtown Alpharetta from The Avalon, and peers into Thompson Street Park! Location, location, location!! Childress Plan offers 3 bedroom, 3.5 bathroom with Low Maintenance townhome living! As you enter, you'll be greeted by an open-concept Foyer with dual French doors leading to oversized Terrace level bedroom complete with Full Bathroom with upgraded Walk in Shower. Main Level Living is breathtaking featuring kitchen overlooking Thompson Street, Dining room, and Living room with a stunning fireplace that makes the space feel warm and inviting. Additional Sunroom with covered deck access provides ample natural light with 7 ft low E dual pane windows. The kitchen boasts quartz countertops & backsplash, upgrades GE CAFE stainless steel appliances, and custom cabinetry on backside of 9 ft island, providing a sleek and modern look. The oversized island offers ample space for food prep and entertainment, making it the perfect spot for family gatherings or entertaining friends. Upstairs, you'll find a spacious owner's suite plus an additional sitting room with private owners balcony directly off sitting ...

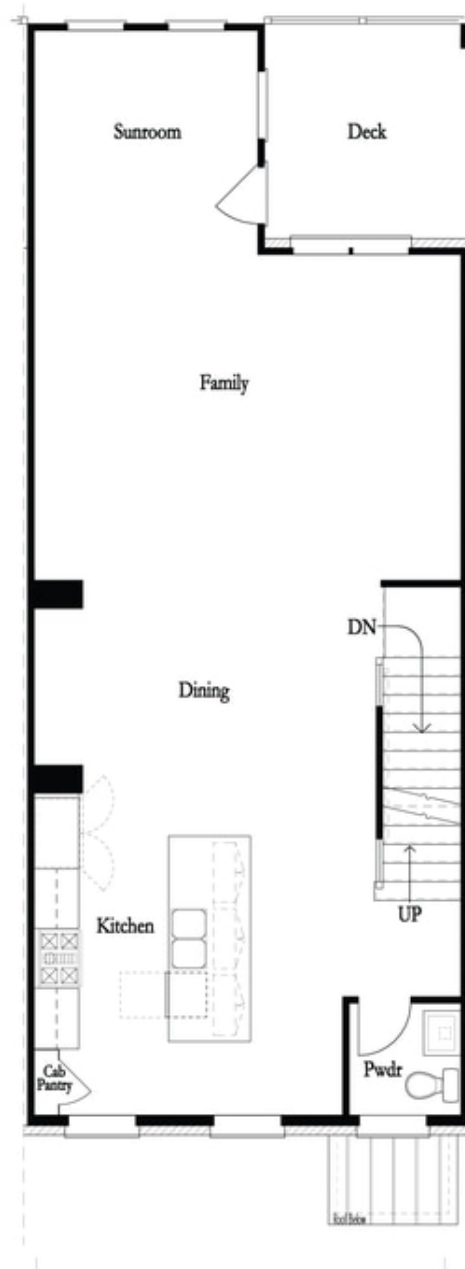
**Want to Know More
About This Home?**

CONTACT OUR COMMUNITY SALES MANAGER
Call Us @ 470.248.2777



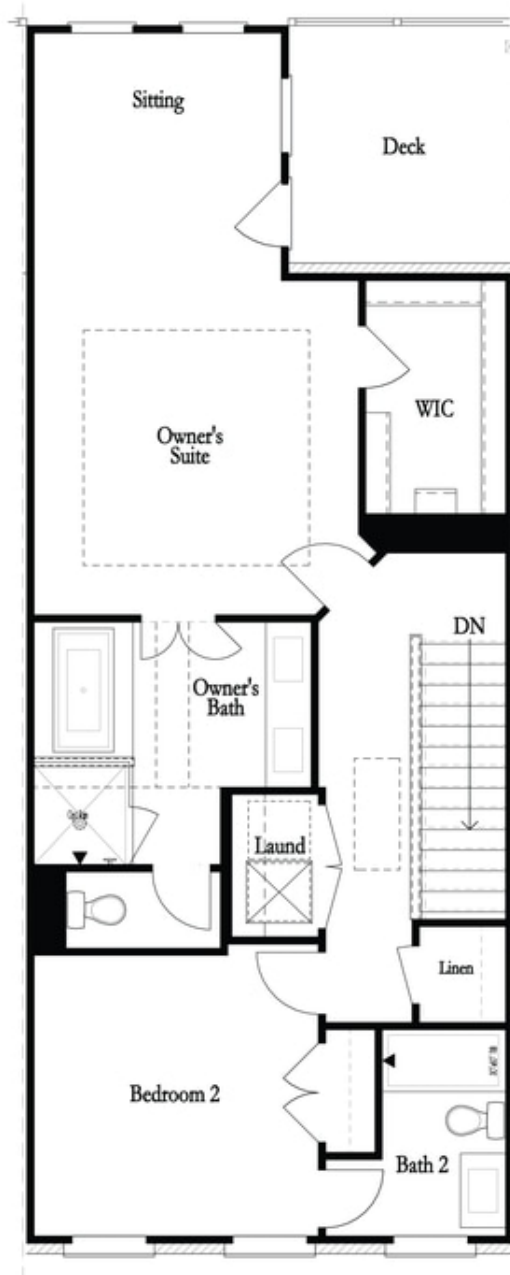
**Want to Know More
About This Home?**

CONTACT OUR COMMUNITY SALES MANAGER
Call Us @ 470.248.2777



**Want to Know More
About This Home?**

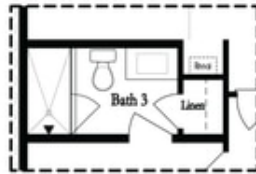
CONTACT OUR COMMUNITY SALES MANAGER
Call Us @ 470.248.2777



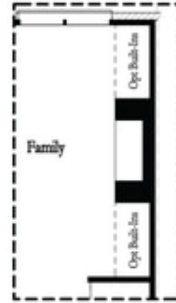
**Want to Know More
About This Home?**

CONTACT OUR COMMUNITY SALES MANAGER
Call Us @ 470.248.2777

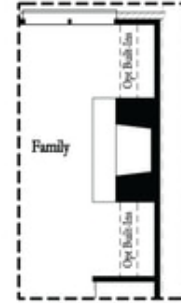
Options



Optional Shower



Optional Fireplace
 Linear



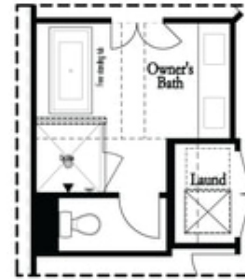
Optional Fireplace

First Floor Options

Second Floor Options



Optional Walk Through Shower



Optional Freestanding
 Tub / Shower Combo

Third Floor Options

**Want to Know More
 About This Home?**

CONTACT OUR COMMUNITY SALES MANAGER
 Call Us @ 470.248.2777