



PRICED AT
\$995,295

 **2105 Sq Ft**

 **3 Beds**

 **3.5 Baths**

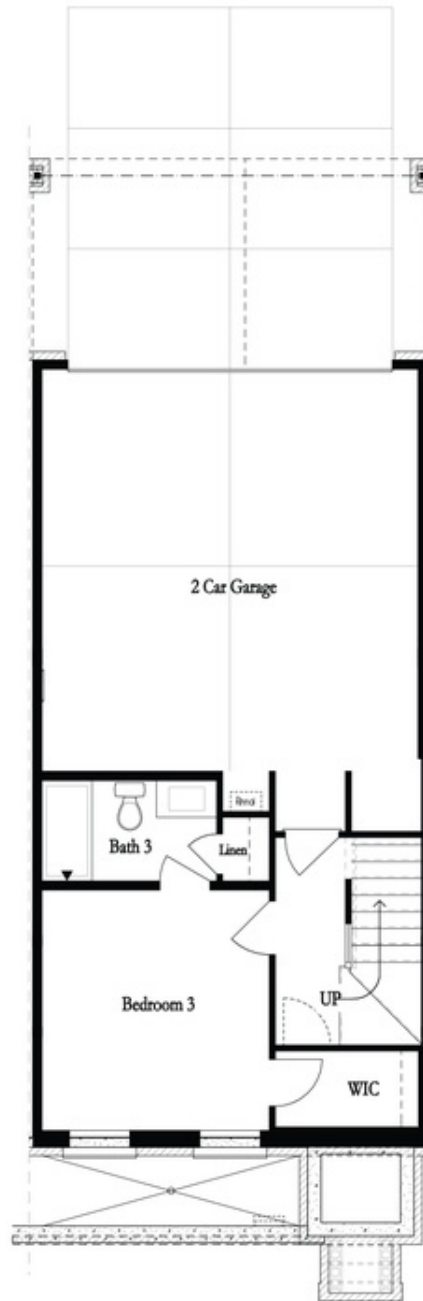
 **2 Car Garage**

 **3.0 Story**

New Year New Home New You! @ Towns on Thompson! MOVE IN READY UNIT -Enjoy \$30K ANYWAY YOU WANT + \$5,000 towards Closing Costs with 1 of our 5 Preferred Lender, with a JANUARY CLOSING. Step into a residence where thoughtful design meets timeless sophistication. This impeccably curated townhome with 10 foot ceilings on main level and hardwoods throughout is a testament to modern luxury, featuring upgraded finishes and architectural details throughout. MUST SEE HOME!! The stunning and bright kitchen showcases GE Café appliances, industrial slide-in gas range with boxed-wood hood in Willow Grey. Bright White Kitchen stacked cabinets with Cambria Brittanica quartz countertops, backsplash and oversized kitchen island with waterfall feature and Willow Grey island cabinets with extra storage. The kitchen space is illuminated with statement pendant lights and natural light that provides a warm and sophisticated ambiance. The living room/ dining room space includes a beverage center with matching white cabinets and quartz top and floating shelves- perfect for entertaining friends and family. The family room features a sleek fireplace with stacked quartzite wrapped to the ceiling and cabinet/ floating shelves that create an inviting centerpiece. Walk down to the terrace-level suite offering a serene suite bedroom retreat ...

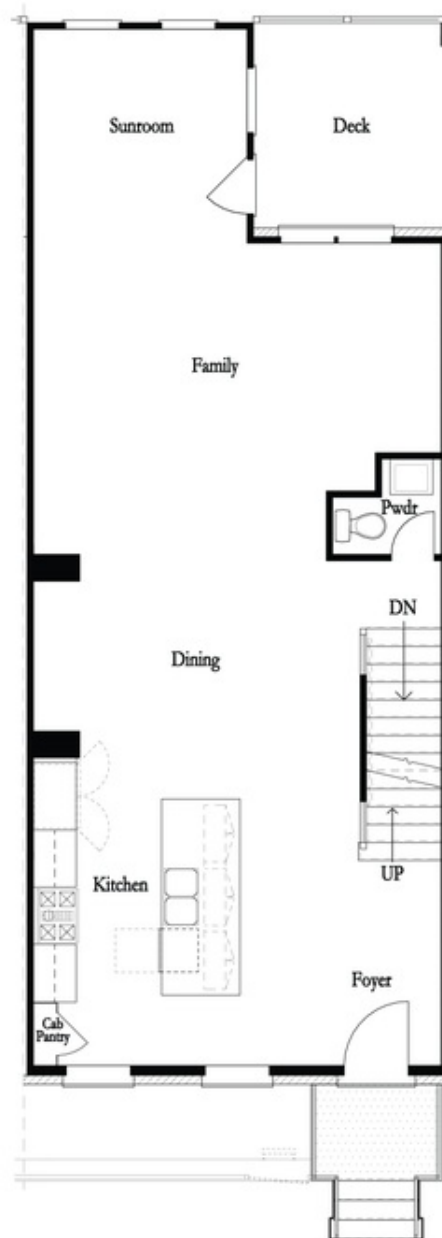
**Want to Know More
About This Home?**

CONTACT OUR COMMUNITY SALES MANAGER
Call Us @ 470.248.2777



Want to Know More
About This Home?

CONTACT OUR COMMUNITY SALES MANAGER
Call Us @ 470.248.2777



Want to Know More
About This Home?

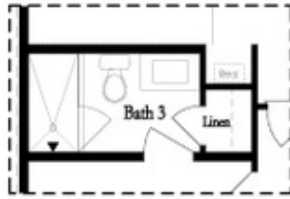
CONTACT OUR COMMUNITY SALES MANAGER
Call Us @ 470.248.2777



Want to Know More
About This Home?

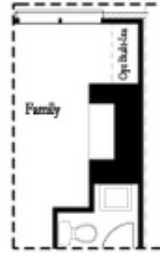
CONTACT OUR COMMUNITY SALES MANAGER
Call Us @ 470.248.2777

Optional Layouts

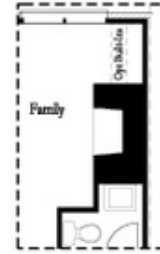


Opt. Shower

First Floor Options



Opt. Linear Fireplace

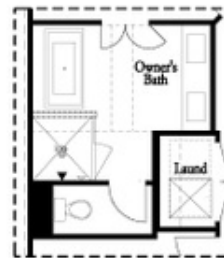


Opt. Fireplace

Second Floor Options



Opt. Walk-Through Shower



Opt. Freestanding Tub/Shower Combo

Third Floor Options

Want to Know More
 About This Home?

CONTACT OUR COMMUNITY SALES MANAGER
 Call Us @ 470.248.2777