



PRICED AT
\$962,800

 **2105 Sq Ft**

 **3 Beds**

 **3.5 Baths**

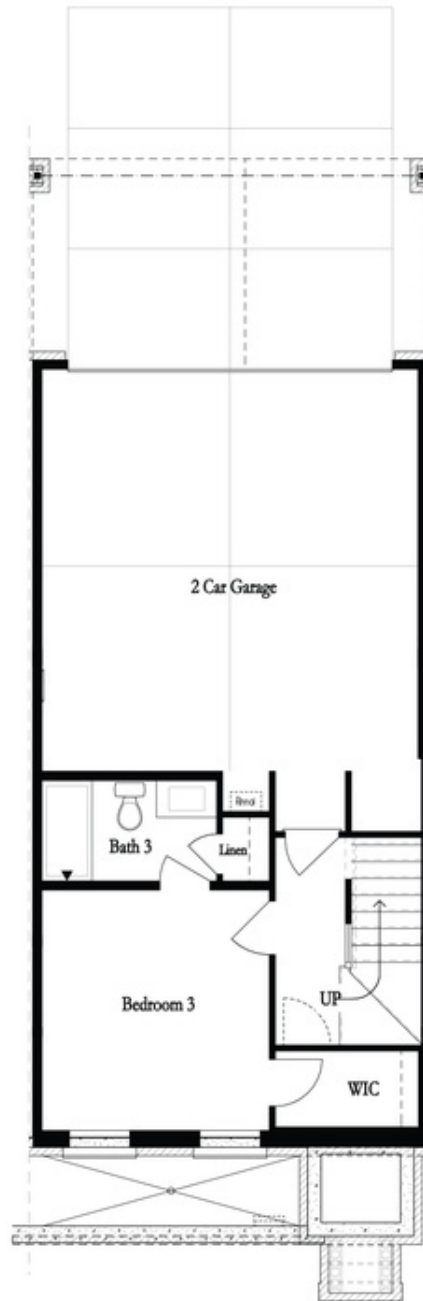
 **2 Car Garage**

 **3.0 Story**

New Year New Home New You! @ Towns on Thompson! MOVE IN READY UNIT -Enjoy \$30K ANYWAY YOU WANT with contracts written in FEBRUARY. Step into a residence where thoughtful design meets timeless sophistication. This impeccably curated townhome with 10-foot ceilings on the main level and hardwoods throughout is a testament to modern luxury, featuring upgraded finishes and architectural details. THIS IS A MUST SEE HOME!! The stunning and bright kitchen showcases GE Café appliances and an industrial slide-in gas range with a stainless steel vent hood. Bright White Kitchen stacked cabinets with Cambria Inverness Polished Frost quartz that is also displayed on the beverage center in the dining area. Glossy White Chevron Gloss backsplash laid to 10-foot ceiling. The oversized kitchen island features a waterfall detail with extra storage; the island cabinet color is Creekstone to match the Beverage Center cabinet. The beverage center has modern floating shelves stained to match the Hardwood flooring, Fireplace mantle, and stairs throughout the home. The kitchen island showcases the welcoming and warm tones perfectly: stunning Inverness Frost Waterfall island with Creekstone cabinets and Luxe Gold faucet and white Farmhouse Sink. The kitchen space is illuminated nicely with tons of natural light from ...

**Want to Know More
About This Home?**

CONTACT OUR COMMUNITY SALES MANAGER
Call Us @ 470.248.2777



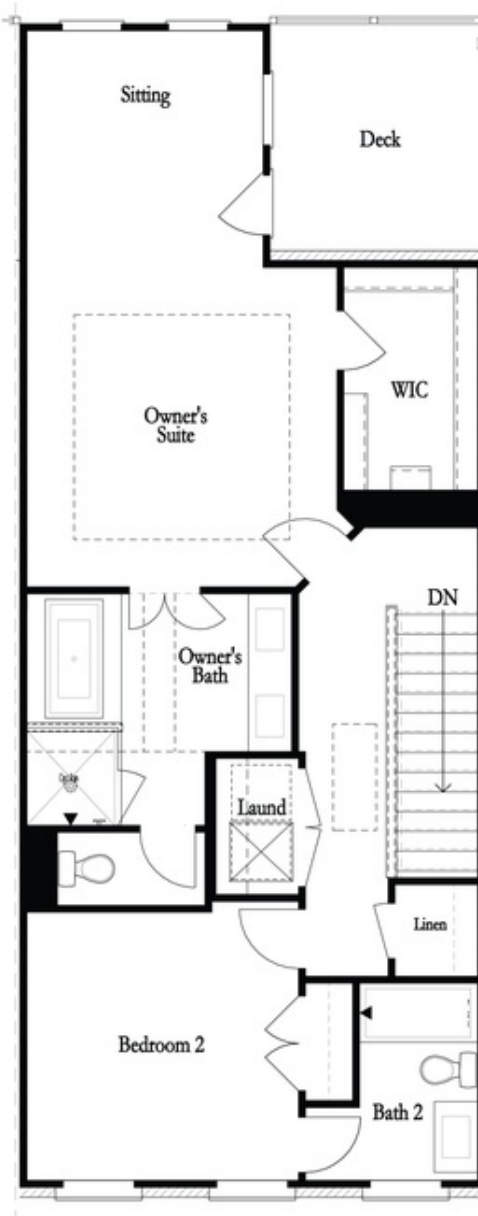
Want to Know More
About This Home?

CONTACT OUR COMMUNITY SALES MANAGER
Call Us @ 470.248.2777



Want to Know More
About This Home?

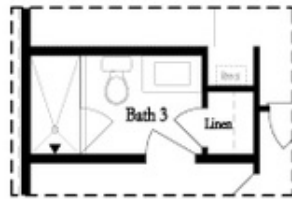
CONTACT OUR COMMUNITY SALES MANAGER
Call Us @ 470.248.2777



Want to Know More
About This Home?

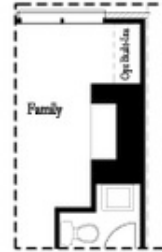
CONTACT OUR COMMUNITY SALES MANAGER
Call Us @ 470.248.2777

Optional Layouts

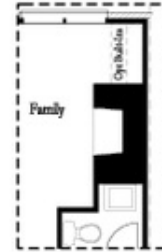


Opt. Shower

First Floor Options



Opt. Linear Fireplace

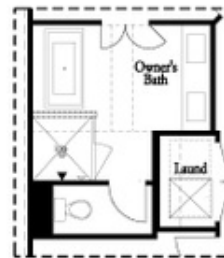


Opt. Fireplace

Second Floor Options



Opt. Walk-Through Shower



Opt. Freestanding Tub/Shower Combo

Third Floor Options

Want to Know More
 About This Home?

CONTACT OUR COMMUNITY SALES MANAGER
 Call Us @ 470.248.2777