

PRICED AT
\$927,800



2105 Sq Ft



3 Beds



3.5 Baths



2 Car Garage



3.0 Story

Summer of Savings at Towns on Thompson! MOVE-IN-READY and FINAL OPPORTUNITIES NOW! \$35k ANYWAY HAS BEEN USED TO REDUCE THE PRICE OF THE HOME FOR CONTRACT WRITTEN IN JUNE - You may choose to use it a different way!!! Step into luxury living at Towns on Thompson, a boutique community perfectly situated between Avalon and Downtown Alpharetta. This impeccably curated townhome features 10-foot ceilings on the main level, wide-plank hardwood floors throughout, and a sophisticated palette of high-end finishes and custom details. Designed for discerning buyers, the open-concept layout blends timeless elegance with modern functionality. The heart of the home is a chef's kitchen equipped with GE Café appliances, an industrial slide-in gas range, and a stainless steel vent hood. Bright white stacked cabinets stretch to the ceiling, paired with polished Cambria Inverness Frost quartz countertops and a striking white chevron tile backsplash laid to the ceiling. The oversized island showcases a dramatic waterfall edge, finished in Creekstone cabinetry to complement the beverage center and floating shelves, all stained to match the hardwood floors and fireplace mantle. Luxe gold hardware, a farmhouse sink, and statement Aged Iron pendant lighting add warmth and depth to this stunning space. The open living ...

**Want to Know More
About This Home?**

CONTACT OUR COMMUNITY SALES MANAGER
Call Us @ 470.248.2777



Elevation R

Want to Know More
About This Home?

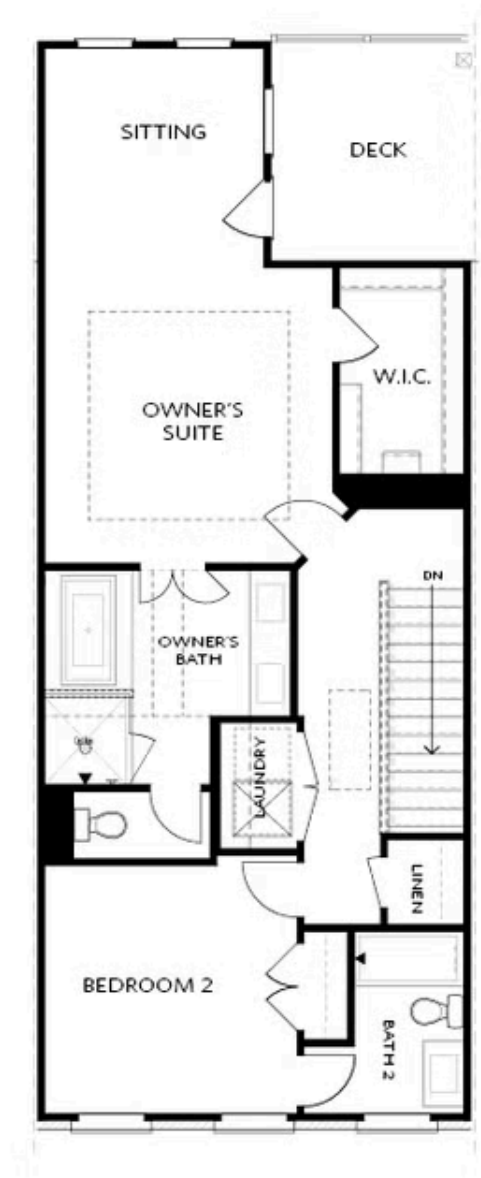
CONTACT OUR COMMUNITY SALES MANAGER
Call Us @ 470.248.2777



Elevation R

Want to Know More
About This Home?

CONTACT OUR COMMUNITY SALES MANAGER
Call Us @ 470.248.2777



Elevation R

Want to Know More
About This Home?

CONTACT OUR COMMUNITY SALES MANAGER
Call Us @ 470.248.2777



OPT Shower

BASEMENT



OPT Linear Fireplace

SECOND FLOOR



OPT Fireplace



OPT Open Rail



OPT Walk-Through Shower



OPT Freestanding Tub/Shower Combo

Want to Know More
About This Home?

CONTACT OUR COMMUNITY SALES MANAGER
Call Us @ 470.248.2777