



PRICED AT  
**\$962,800**

 **2105 Sq Ft**

 **3 Beds**

 **3.5 Baths**

 **2 Car Garage**

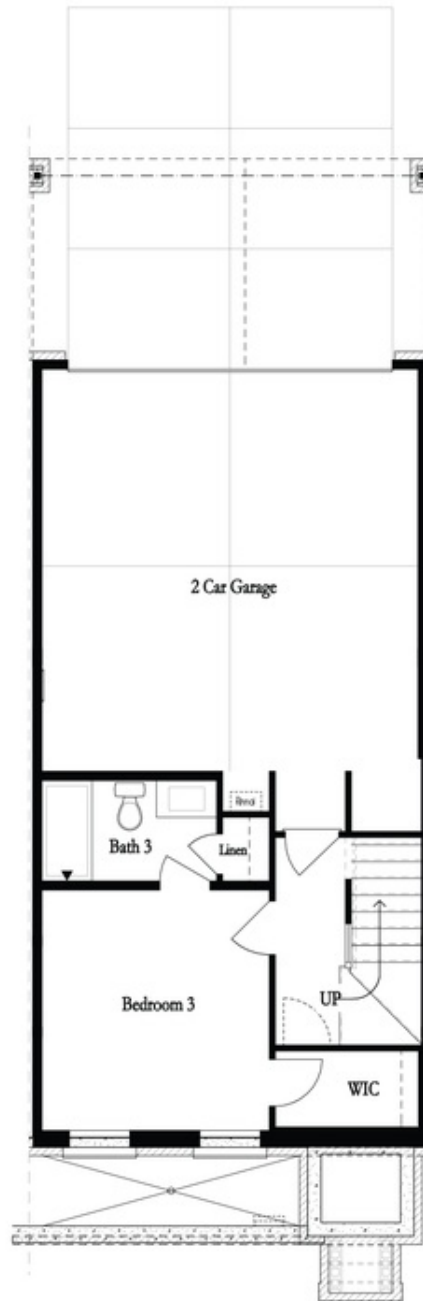
 **3.0 Story**

**New Year New Home New You! @ Towns on Thompson! MOVE IN READY UNIT -Enjoy \$15K ANYWAY YOU WANT + \$5,000 towards Closing Costs with 1 of our 5 Preferred Lender, with contracts written in JANUARY. Step into a residence where thoughtful design meets timeless sophistication. This impeccably curated townhome with 10-foot ceilings on the main level and hardwoods throughout is a testament to modern luxury, featuring upgraded finishes and architectural details. THIS IS A MUST SEE HOME!! The stunning and bright kitchen showcases GE Café appliances and an industrial slide-in gas range with a stainless steel vent hood. Bright White Kitchen stacked cabinets with Cambria Inverness Polished Frost quartz that is also displayed on the beverage center in the dining area. Glossy White Chevron Gloss backsplash laid to 10-foot ceiling. The oversized kitchen island features a waterfall detail with extra storage; the island cabinet color is Creekstone to match the Beverage Center cabinet. The beverage center has modern floating shelves stained to match the Hardwood flooring, Fireplace mantle, and stairs throughout the home. The kitchen island showcases the welcoming and warm tones perfectly: stunning Inverness Frost Waterfall island with Creekstone cabinets and Luxe Gold faucet and white Farmhouse Sink.**

...

**Want to Know More  
About This Home?**

**CONTACT OUR COMMUNITY SALES MANAGER**  
**Call Us @ 470.248.2777**



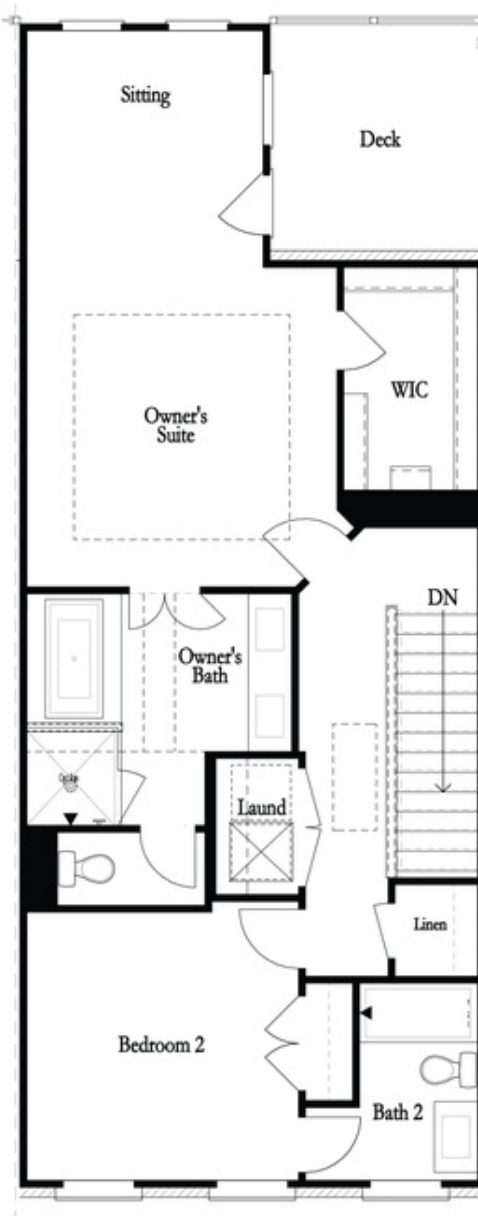
Want to Know More  
About This Home?

CONTACT OUR COMMUNITY SALES MANAGER  
Call Us @ 470.248.2777



Want to Know More  
About This Home?

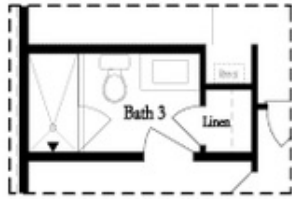
CONTACT OUR COMMUNITY SALES MANAGER  
Call Us @ 470.248.2777



Want to Know More  
About This Home?

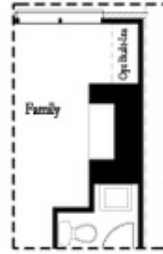
CONTACT OUR COMMUNITY SALES MANAGER  
Call Us @ 470.248.2777

Optional Layouts

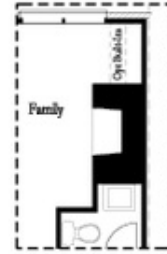


*Opt. Shower*

First Floor Options



*Opt. Linear Fireplace*

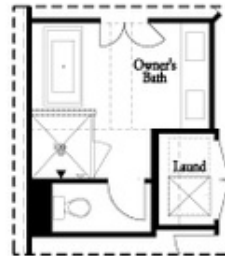


*Opt. Fireplace*

Second Floor Options



*Opt. Walk-Through Shower*



*Opt. Freestanding Tub/Shower Combo*

Third Floor Options

Want to Know More  
 About This Home?

CONTACT OUR COMMUNITY SALES MANAGER  
 Call Us @ 470.248.2777