




PRICED AT
\$1,010,540

 2105 Sq Ft

 3 Beds

 3.5 Baths

 2 Car Garage

 3.0 Story

Spring into a New Home! MOVE IN READY + END UNIT + FINAL OPPORTUNITIES NOW ! \$35k ANYWAY ON CONTRACTS WRITTEN IN MAY. Step into a residence where thoughtful design meets timeless sophistication. This impeccably designed townhome with 10-foot ceilings and upgrades throughout is a testament to modern luxury. THIS IS A MUST-SEE HOME featuring a stunning and bright kitchen showcasing GE Café appliances and an industrial 36" slide-in gas range with a boxed hood stained to match Driftwood color island cabinet. The kitchen has stacked Alabaster colored cabinets with Cambia quartz- Calacatta Laza Oro countertops, a white porcelain farmhouse sink with a Luxe Gold faucet and waterfall detail on the oversized island and the backsplash. The kitchen openly flows in the dining room, family room and sunroom spaces. A beverage station is located in side cabinet in the dining area, continues the Driftwood color to pull in the color of the island and is finished with Calacatta Laza Oro quartz, floating shelves stained to match cabinet and a stunning tile backsplash laid in a herringbone pattern that runs up to a 10-foot ceiling. The Flow through dining area to family room space with a cozy fireplace, quartzite surround, side ...

**Want to Know More
About This Home?**

CONTACT OUR COMMUNITY SALES MANAGER
Call Us @ 470.248.2777



Elevation R

Want to Know More
About This Home?

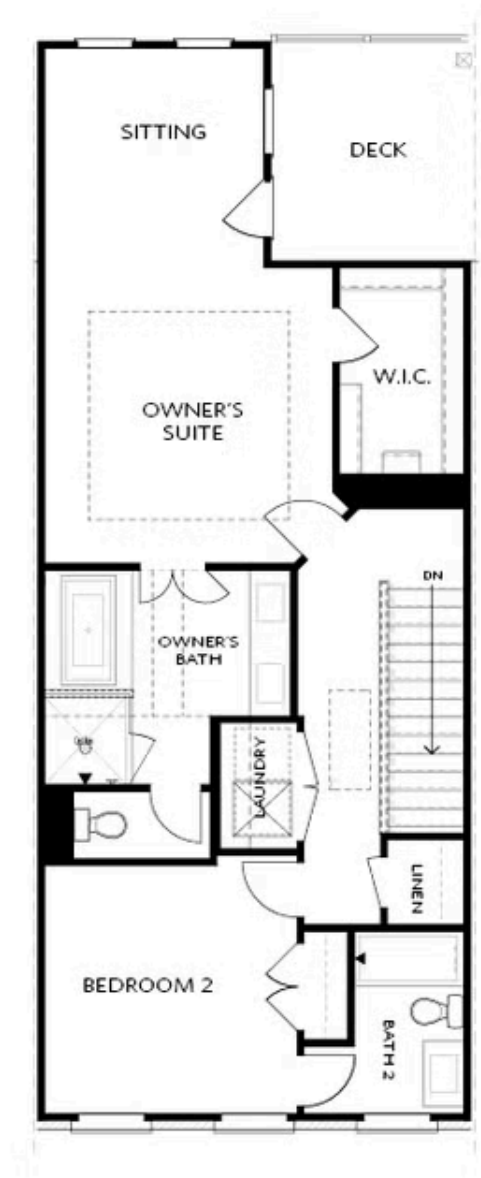
CONTACT OUR COMMUNITY SALES MANAGER
Call Us @ 470.248.2777



Elevation R

Want to Know More
About This Home?

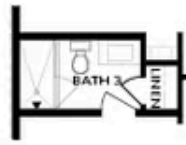
CONTACT OUR COMMUNITY SALES MANAGER
Call Us @ 470.248.2777



Elevation R

Want to Know More
About This Home?

CONTACT OUR COMMUNITY SALES MANAGER
Call Us @ 470.248.2777



OPT Shower

BASEMENT



OPT Linear Fireplace

SECOND FLOOR



OPT Fireplace



OPT Open Rail



OPT Walk-Through Shower



OPT Freestanding Tub/Shower Combo

Want to Know More
About This Home?

CONTACT OUR COMMUNITY SALES MANAGER
Call Us @ 470.248.2777