



PRICED AT
\$439,900

 1480 Sq Ft

 2 Beds

 2.0 Baths

 1 Car Garage

 2.0 Story

FALL INTO SAVINGS*NOW FOR A LIMITED TIME ONLY!!!*** ~~~Ask about our 4.875% interest rate on purchase agreements written now through October 2024 & close by November 30 2024. Park your car on the weekends, and walk or bike the beltline right outside of your door! Grant Place is a BRAND NEW boutique community presented by The Providence Group. We are tucked away across from the Beacon at the end of Grant St. One level living, elevator service and private garages with a covered carport make life easy here. Welcome to The Kirkwood unit 1822, located on the 2nd floor of our newly released 1800 building. The open-concept layout seamlessly connects the living, dining, and kitchen areas, creating a sense of spaciousness and unity. Upon entry, you will be greeted by an expansive foyer with wood flooring that will lead you into your light filled home and a living area with plenty of wall space to display art or your large screen TV. Slide open your balcony door to enjoy quiet moments and fresh on the covered balcony. Step into one of the 2 bedrooms that sit apart from one another to give way for privacy. These spaces are all designed**

...

**Want to Know More
About This Home?**

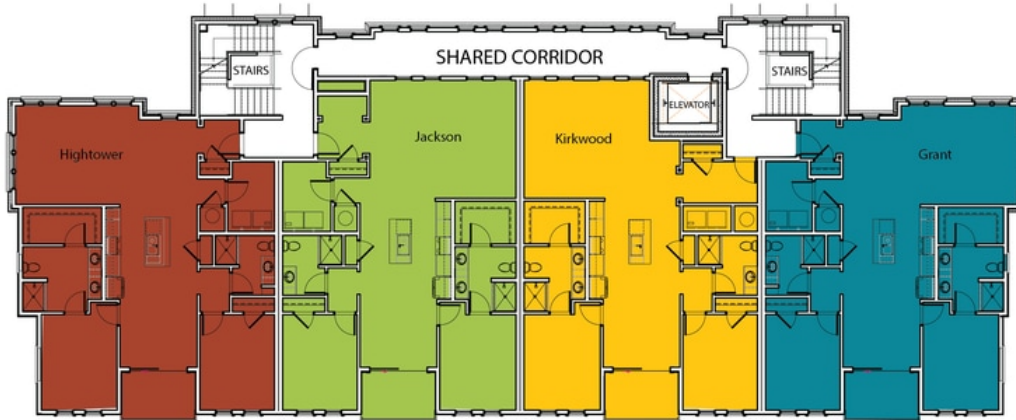
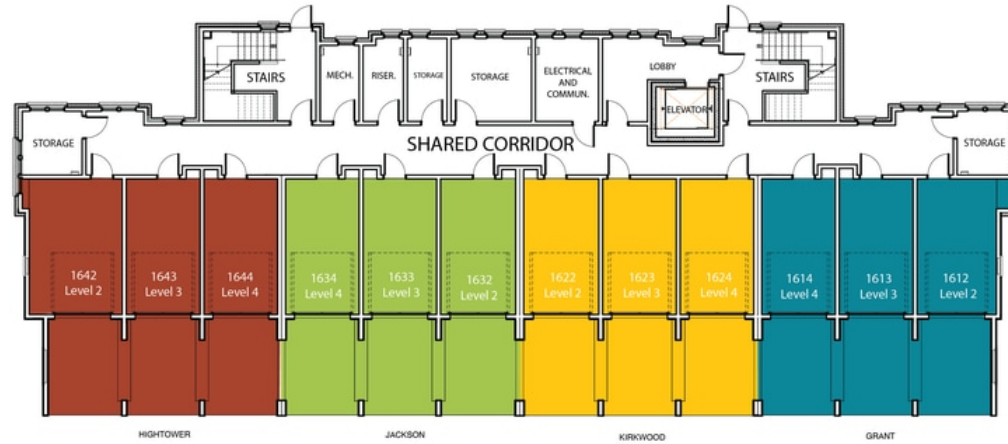
CONTACT OUR COMMUNITY SALES MANAGER
Call Us @ 470.955.0875



2ND FLOOR	UNIT 1622 1722 1822
3RD FLOOR	UNIT 1623 1723 1823
4TH FLOOR	UNIT 1624 1724 1824

**Want to Know More
 About This Home?**

CONTACT OUR COMMUNITY SALES MANAGER
 Call Us @ 470.955.0875



**Want to Know More
 About This Home?**

CONTACT OUR COMMUNITY SALES MANAGER
 Call Us @ 470.955.0875



2ND FLOOR	UNIT 1922		2022		2122
3RD FLOOR	UNIT 1923		2023		2123
4TH FLOOR	UNIT 1924		2024		2124

**Want to Know More
 About This Home?**

CONTACT OUR COMMUNITY SALES MANAGER
 Call Us @ 470.955.0875



Want to Know More
About This Home?

CONTACT OUR COMMUNITY SALES MANAGER
Call Us @ 470.955.0875