



PRICED AT
\$419,900

 1480 Sq Ft

 2 Beds

 2.0 Baths

 1 Car Garage

 2.0 Story

New Year New Home New You!! *NOW FOR A LIMITED TIME ONLY!!!*** ~~~ Ask about our \$40K Anyway You Want promotion for qualified buyers for contracts written now through the end of February 2025 (LISTED PRICE INCLUDES THE \$40K ANYWAY PROMOTION). Park your car on the weekends and walk or bike the beltline right outside of your door! Grant Place is a BRAND-NEW boutique community presented by The Providence Group. We are tucked away across from the Beacon at the end of Grant St. One level living, elevator service and private garages with a covered carport make life easy here. Welcome to The Kirkwood unit 1724, located on the 4th floor of our 1700 building. The open-concept layout seamlessly connects the living, dining, and kitchen areas, creating a sense of spaciousness and unity. Upon entry, you will be greeted by an expansive foyer with wood flooring that will lead you into your light filled home and a living area with plenty of wall space to display art or your large screen TV. Slide open your balcony door to enjoy quiet moments and fresh on the covered balcony. Step into one of the 2 bedrooms that sit apart from one another ...**

Want to Know More
About This Home?

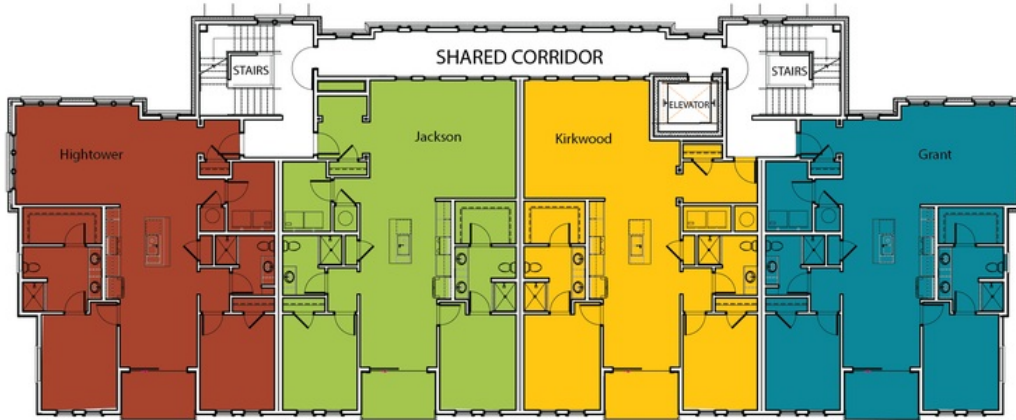
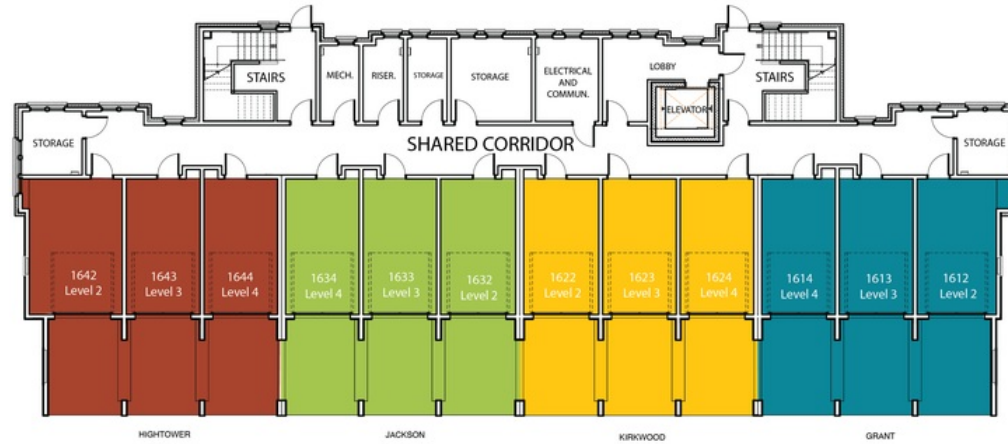
CONTACT OUR COMMUNITY SALES MANAGER
Call Us @ 470.955.0875



2ND FLOOR	UNIT 1622		1722		1822
3RD FLOOR	UNIT 1623		1723		1823
4TH FLOOR	UNIT 1624		1724		1824

Want to Know More
 About This Home?

CONTACT OUR COMMUNITY SALES MANAGER
 Call Us @ 470.955.0875



Want to Know More
About This Home?

CONTACT OUR COMMUNITY SALES MANAGER
Call Us @ 470.955.0875



2ND FLOOR	UNIT 1922		2022		2122
3RD FLOOR	UNIT 1923		2023		2123
4TH FLOOR	UNIT 1924		2024		2124

Want to Know More
 About This Home?

CONTACT OUR COMMUNITY SALES MANAGER
 Call Us @ 470.955.0875



Want to Know More
About This Home?

CONTACT OUR COMMUNITY SALES MANAGER
Call Us @ 470.955.0875