



PRICED AT  
**\$494,900**

 1484 Sq Ft

 2 Beds

 2.0 Baths

 1 Car Garage

 2.0 Story

Spring into a New Home!! \*\*\*NOW FOR A LIMITED TIME ONLY!!!\*\*\* ~~~ \$40K Anyway You Want It for qualified buyers for contracts written now through the end of May 2025. Welcome Home to Grant Place! A BRAND-NEW quiet boutique community of single level living located on the Beltline's Southside Trail! Wake up on Sunday mornings and walk outside your door to enjoy locally sourced produce and food at the Grant Park Farmers Market. Each home at Grant Place offers private garages that include a 220V outlet and an additional covered carport. Located in the 2000 building, you only have 12 neighbors spanning over 4 floors! Upon entering this Southwest CORNER UNIT, you'll notice how expansive the living area is to accommodate your furnishings and with 2 walls of windows that you can watch the evening sunset from. We've made it easy for you when purchasing your new home, the living room wall is already prepped to hang your TV and hide the wires, an oversized laundry room for a side-by-side washer & dryer with additional storage, a pantry off of the kitchen, an exhaust fan to turn on when cooking and so much more! Gather around your kitchen island when ...

**Want to Know More  
About This Home?**

CONTACT OUR COMMUNITY SALES MANAGER  
Call Us @ 470.955.0875



2ND FLOOR	UNIT 1612   1712   1812
3RD FLOOR	UNIT 1613   1713   1813
4TH FLOOR	UNIT 1614   1714   1814

**Want to Know More  
 About This Home?**

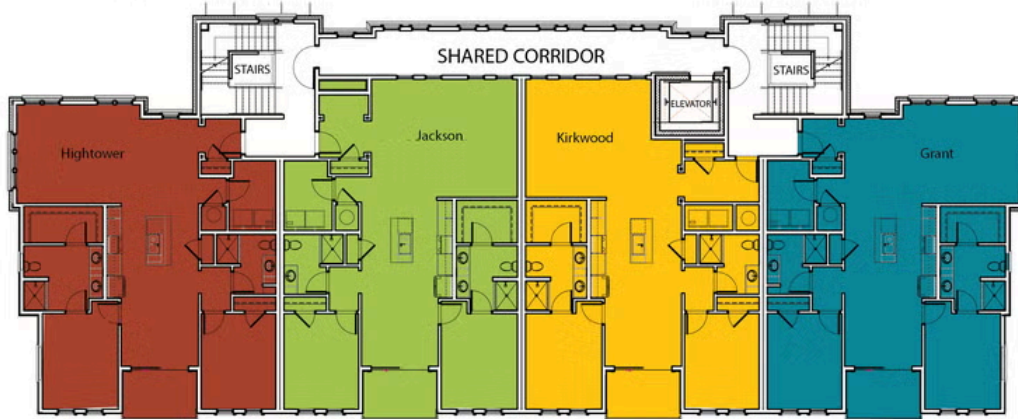
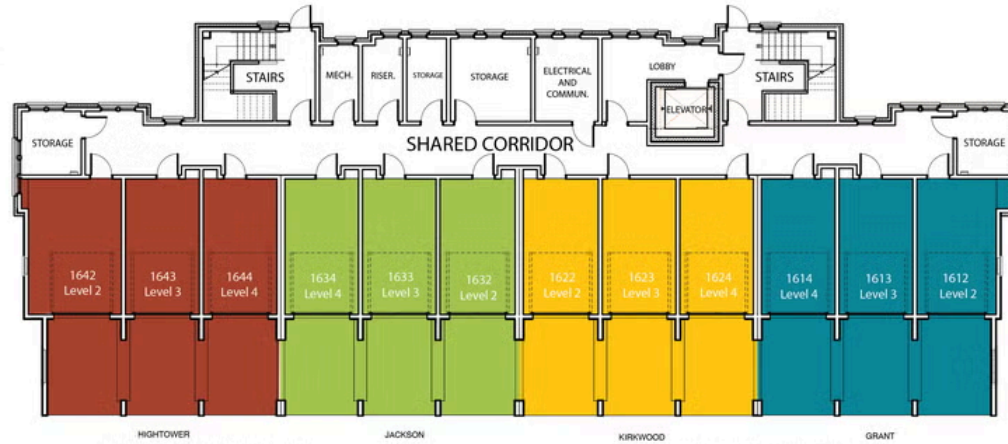
CONTACT OUR COMMUNITY SALES MANAGER  
 Call Us @ 470.955.0875



2ND FLOOR	UNIT 1912		2012		2112
3RD FLOOR	UNIT 1913		2013		2113
4TH FLOOR	UNIT 1914		2014		2114

Want to Know More  
 About This Home?

CONTACT OUR COMMUNITY SALES MANAGER  
 Call Us @ 470.955.0875



Want to Know More  
 About This Home?

CONTACT OUR COMMUNITY SALES MANAGER  
 Call Us @ 470.955.0875



Want to Know More  
 About This Home?

CONTACT OUR COMMUNITY SALES MANAGER  
 Call Us @ 470.955.0875