



PRICED AT
\$559,900

 1484 Sq Ft

 2 Beds

 2.0 Baths

 1 Car Garage

 2.0 Story

FABULOUS FALL SAVINGS*NOW FOR A LIMITED TIME ONLY!!!*** ~~~ \$15,000 towards Closing Costs when you use one of our Preferred Lenders! Live on the Beltline! Welcome to Grant Place, a BRAND NEW boutique community that offers a private garage and elevator service to your one level living home. Let's walk through the lavish upgrades and distinctive features that define this gorgeous home. This home is a top floor unit facing Northeast offering beautiful morning sunshine. Each home features timeless finish collections that include 42 inch wood upper cabinetry, soft close doors, under cabinet lighting, Cambria quartz countertops, durable solid surface flooring, tiled bathrooms, raised vanities, Delta fixtures and GE Café SS Appliances. The open-concept layout seamlessly connects the living, dining, and kitchen areas, fostering a sense of spaciousness and unity. As you approach the entrance, be greeted by an expansive foyer with wood flooring that will lead you into your light filled home, a living area with plenty of wall space to display art or your large screen TV, slide open your balcony door to dine alfresco on the covered balcony, step into one of the 2 bedrooms that sit apart from one another to give way for privacy. These ...**

**Want to Know More
About This Home?**

CONTACT OUR COMMUNITY SALES MANAGER
Call Us @ 470.955.0875



2ND FLOOR	UNIT 1612 1712 1812
3RD FLOOR	UNIT 1613 1713 1813
4TH FLOOR	UNIT 1614 1714 1814

**Want to Know More
 About This Home?**

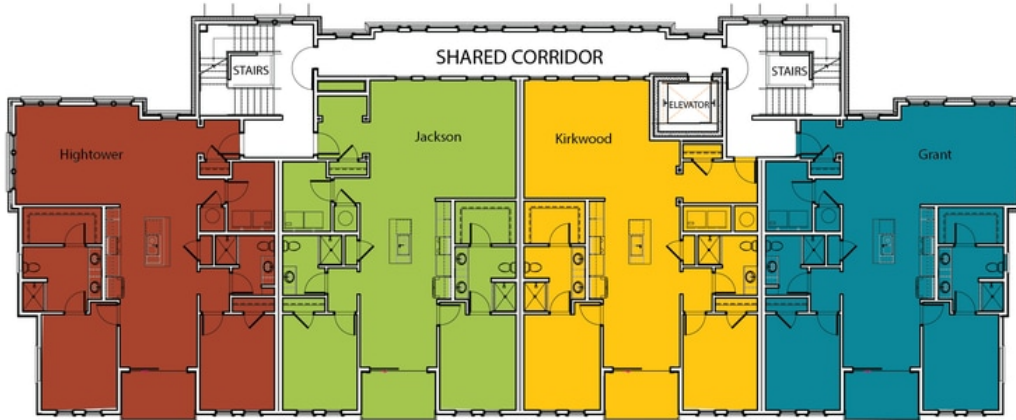
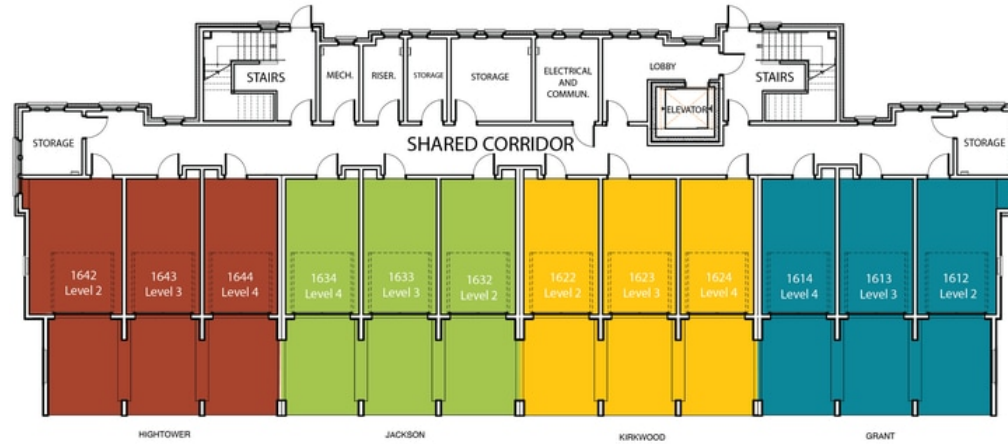
CONTACT OUR COMMUNITY SALES MANAGER
 Call Us @ 470.955.0875



2ND FLOOR	UNIT 1912		2012		2112
3RD FLOOR	UNIT 1913		2013		2113
4TH FLOOR	UNIT 1914		2014		2114

**Want to Know More
 About This Home?**

CONTACT OUR COMMUNITY SALES MANAGER
 Call Us @ 470.955.0875



**Want to Know More
About This Home?**

CONTACT OUR COMMUNITY SALES MANAGER
Call Us @ 470.955.0875



Want to Know More
About This Home?

CONTACT OUR COMMUNITY SALES MANAGER
Call Us @ 470.955.0875