



PRICED AT
\$399,900

 1480 Sq Ft

 2 Beds

 2.0 Baths

 1 Car Garage

 2.0 Story

FALL INTO SAVINGS*NOW FOR A LIMITED TIME ONLY!!!***** Ask about our 4.875% interest rate on purchase agreements written now through October 31st 2024 and close by November 30 2024~~~Welcome Home to Grant Place! A BRAND NEW quiet boutique community that offers private garages that has a 220V outlet with an additional covered carport and elevator service to your one level living home. Located in the 2000 building, you only have 12 neighbors spanning over 4 floors! Our KIRKWOOD plan, Unit 2022, offers open concept living with 2 bedrooms separated for privacy each with their own bathroom. Upon entering, you have an expansive foyer with a coat closet and laundry closet equipped for full size side by side washer and dryer. The foyer leads you into your oversized living area with enough wall space and already prepped to hang a big screen TV! Gather around your kitchen island when entertaining or have a sit down dinner in your dining room that overlooks your covered balcony. These spaces are all designed for you to entertain or relax after a long day. Our exquisitely designed KIRKWOOD floorplan, where sophistication meets modern luxury in a seamless blend of architectural innovation. The lavish upgrades and ...

**Want to Know More
About This Home?**

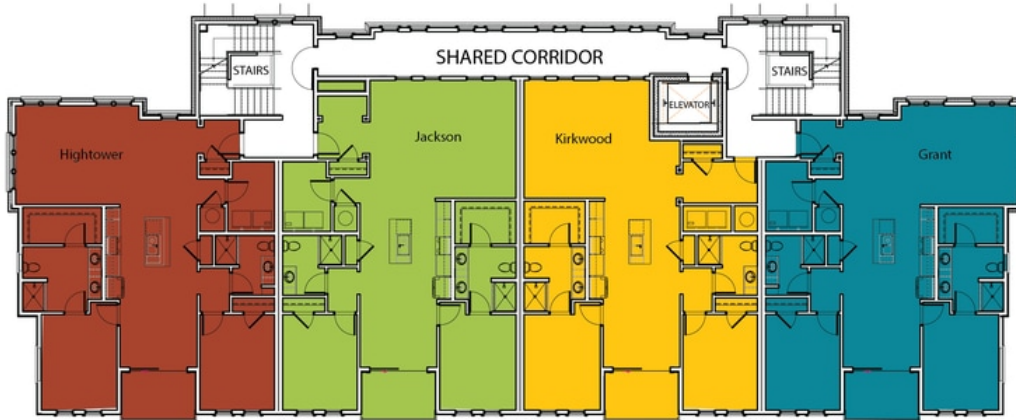
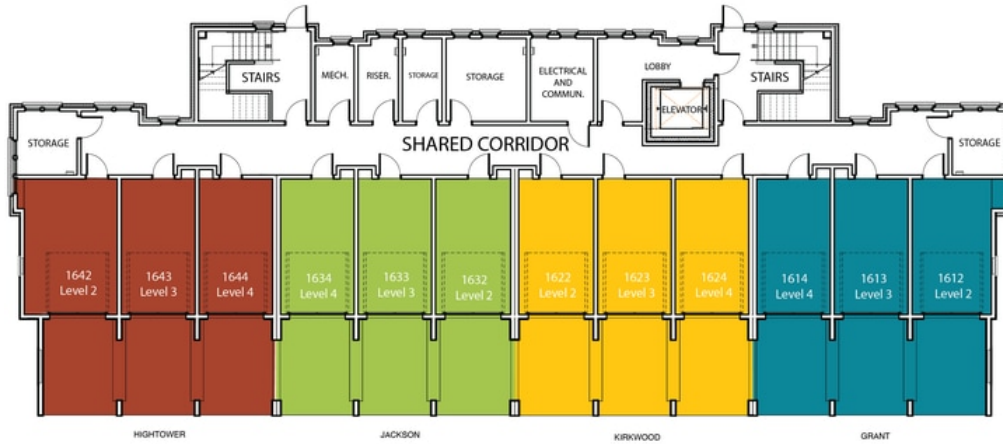
CONTACT OUR COMMUNITY SALES MANAGER
Call Us @ 470.955.0875



2ND FLOOR	UNIT 1622 1722 1822
3RD FLOOR	UNIT 1623 1723 1823
4TH FLOOR	UNIT 1624 1724 1824

**Want to Know More
 About This Home?**

CONTACT OUR COMMUNITY SALES MANAGER
 Call Us @ 470.955.0875



Want to Know More
About This Home?

CONTACT OUR COMMUNITY SALES MANAGER
Call Us @ 470.955.0875



2ND FLOOR	UNIT 1922		2022		2122
3RD FLOOR	UNIT 1923		2023		2123
4TH FLOOR	UNIT 1924		2024		2124

**Want to Know More
 About This Home?**

CONTACT OUR COMMUNITY SALES MANAGER
 Call Us @ 470.955.0875



Want to Know More
About This Home?

CONTACT OUR COMMUNITY SALES MANAGER
Call Us @ 470.955.0875