

PRICED AT
\$514,900

 1567 Sq Ft

 2 Beds

 2.0 Baths

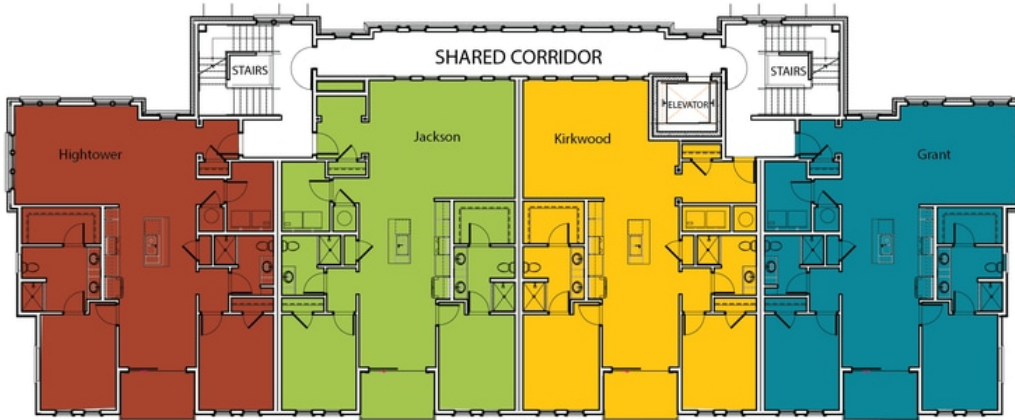
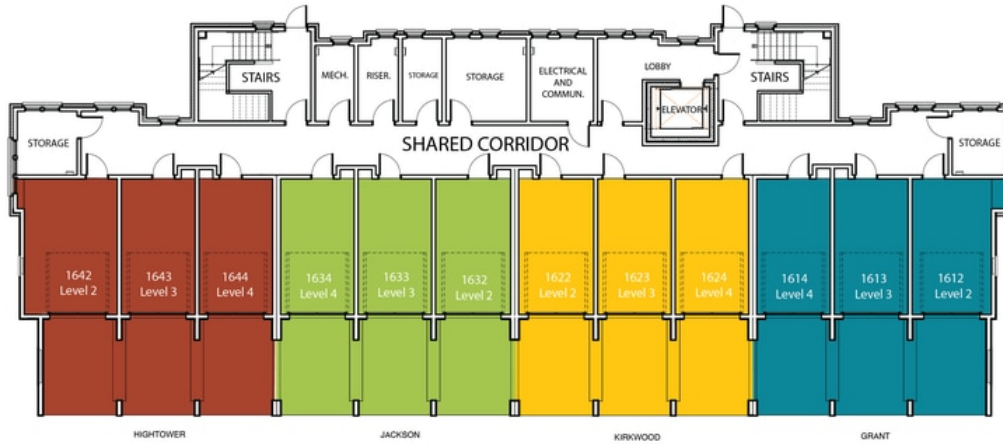
 1 Car Garage

 2.0 Story

SIZZLING SUMMER SAVINGS*NOW FOR A LIMITED TIME ONLY!!!*** ~~~\$15,000 towards Closing Costs when you use one of our Preferred Lenders! If your idea of a good location is direct access to the Beltline and walkability to dining, then welcome to Grant Place! A BRAND NEW boutique community that offers elevator service to your one level living home. The Jackson plan, Unit 2034, our largest floorplan located on the top floor of our newly released 2000 building. The open-concept layout seamlessly connects the living, dining, and kitchen areas, creating a sense of spaciousness and unity. Upon entry, you will be greeted by an expansive foyer with wood flooring that will lead you into your light filled home and a living area with plenty of wall space to display art or your large screen TV. Slide open your balcony door to enjoy quiet dining on the covered balcony. Step into one of the 2 bedrooms that sit apart from one another to give way for privacy. These spaces are all designed for you to entertain or relax after a long day. Each home offers a private one car garage and a second one car covered carport. Our exquisitely designed JACKSON floorplan, where ...**

**Want to Know More
About This Home?**

CONTACT OUR COMMUNITY SALES MANAGER
Call Us @ 470.955.0875

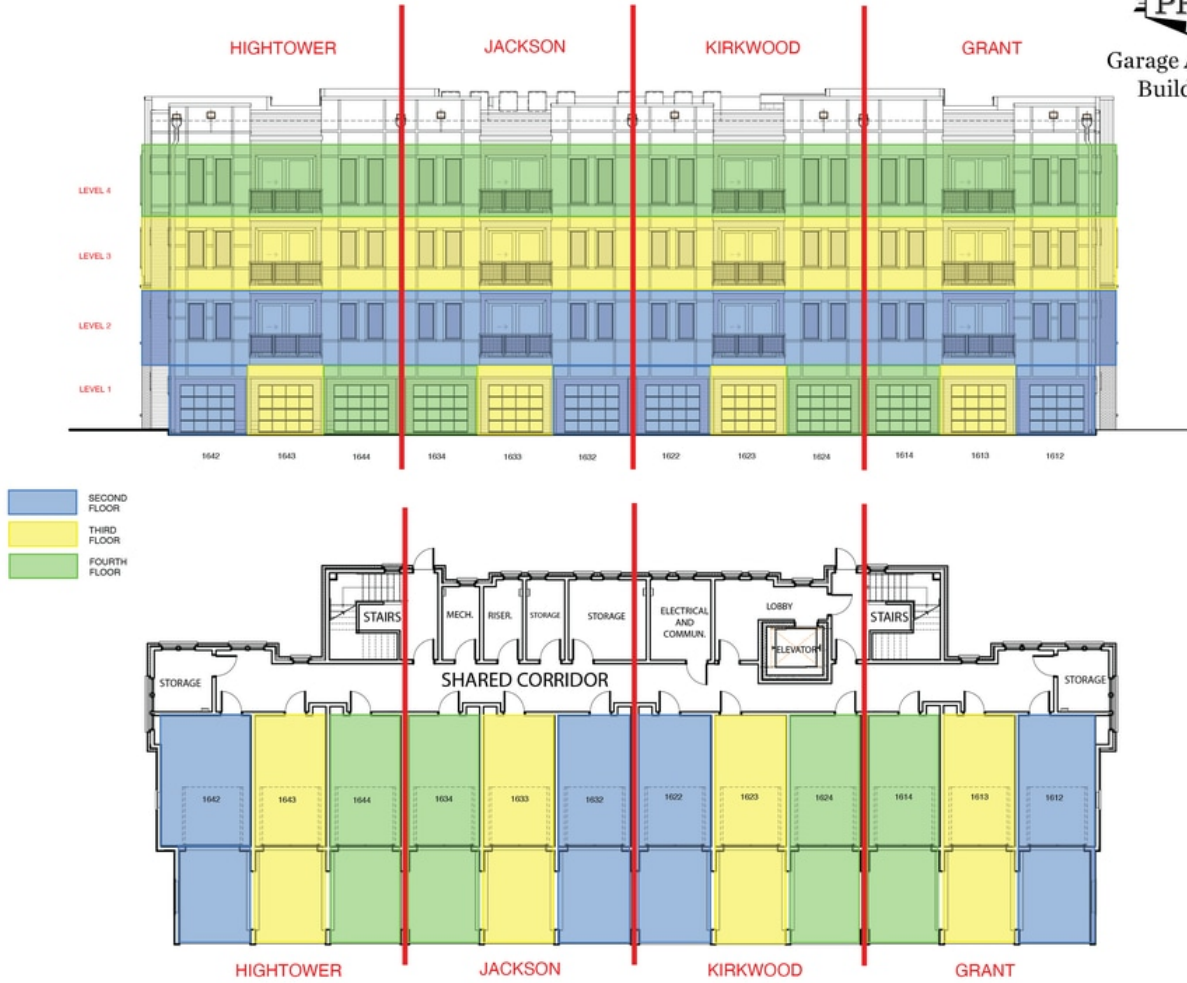


**Want to Know More
 About This Home?**

CONTACT OUR COMMUNITY SALES MANAGER
 Call Us @ 470.955.0875



Garage Assignment
 Building 1600



**Want to Know More
 About This Home?**

CONTACT OUR COMMUNITY SALES MANAGER
 Call Us @ 470.955.0875





2ND FLOOR	UNIT 1632 1732 1832
3RD FLOOR	UNIT 1633 1733 1833
4TH FLOOR	UNIT 1634 1734 1834

**Want to Know More
 About This Home?**

CONTACT OUR COMMUNITY SALES MANAGER
 Call Us @ 470.955.0875



2ND FLOOR	UNIT 1932	2032	2132
3RD FLOOR	UNIT 1933	2033	2133
4TH FLOOR	UNIT 1934	2034	2134

**Want to Know More
 About This Home?**

CONTACT OUR COMMUNITY SALES MANAGER
 Call Us @ 470.955.0875