



PRICED AT  
**\$549,900**

 1536 Sq Ft

 2 Beds

 2.0 Baths

 1 Car Garage

 2.0 Story

**SIZZLING SUMMER SAVINGS\*\*\*NOW FOR A LIMITED TIME ONLY!!!\*\*\* ~~~ \$15,000 toward closing costs when you use one of our preferred lenders! Welcome to Grant Place, a BRAND NEW boutique community with direct access to THE BELTLINE! Let's walk through the lavish upgrades and distinctive features that define this gorgeous top floor, one level living home. Each home features timeless finish collections that include 42 inch wood upper cabinetry, soft close doors, under cabinet lighting, Cambria quartz countertops, durable solid surface flooring, tiled bathrooms, raised vanities, Delta fixtures and GE SS Appliances. The open-concept layout seamlessly connects the living, dining, and kitchen areas, fostering a sense of spaciousness and unity. As you approach the entrance, be greeted by an expansive foyer with wood flooring that will lead you into your light filled home, a living area with plenty of wall space to display art or your large screen TV, slide open your balcony door to dine alfresco on the covered balcony, step into one of the 2 bedrooms that sit apart from one another to give way for privacy. These spaces are all designed for you to entertain or relax after a long day. Each home offers a private one car ...**

**Want to Know More  
About This Home?**

CONTACT OUR COMMUNITY SALES MANAGER  
Call Us @ 470.955.0875



2ND FLOOR	UNIT 1642		1742		1842
3RD FLOOR	UNIT 1643		1743		1843
4TH FLOOR	UNIT 1644		1744		1844

**Want to Know More  
 About This Home?**

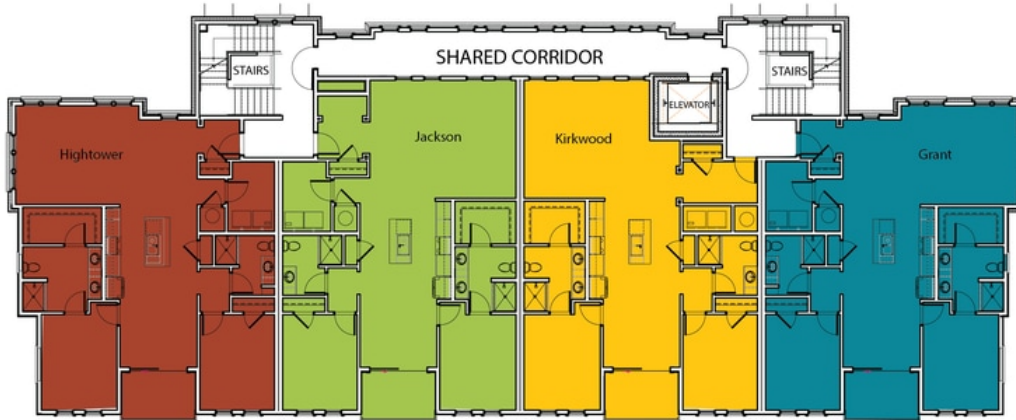
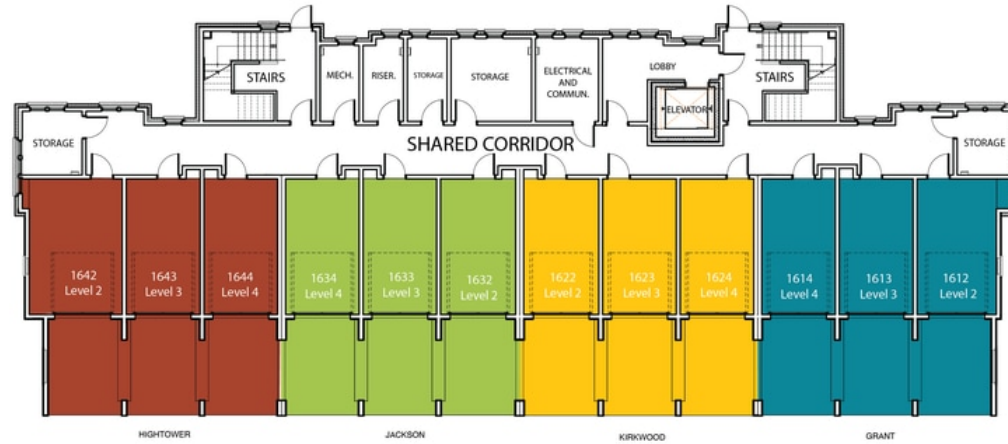
CONTACT OUR COMMUNITY SALES MANAGER  
 Call Us @ 470.955.0875



2ND FLOOR	UNIT 1942		2042		2142
3RD FLOOR	UNIT 1943		2043		2143
4TH FLOOR	UNIT 1944		2044		2144

**Want to Know More  
 About This Home?**

CONTACT OUR COMMUNITY SALES MANAGER  
 Call Us @ 470.955.0875



Want to Know More  
About This Home?

CONTACT OUR COMMUNITY SALES MANAGER  
Call Us @ 470.955.0875



Want to Know More  
About This Home?

CONTACT OUR COMMUNITY SALES MANAGER  
Call Us @ 470.955.0875