



PRICED AT  
**\$519,900**

 1536 Sq Ft

 2 Beds

 2.0 Baths

 1 Car Garage

 2.0 Story

**Spring into a New Home!! \*\*\*NOW FOR A LIMITED TIME ONLY!!!\*\*\* ~~~ Ask about our \$40K Anyway You Want It for qualified buyers for contracts written now through the end of April 2025. Live on the Beltline! Presented by The Providence Group, Grant Place is a boutique new construction community that sits quietly away from a pass-through street. Wake up on Sundays and step outside to enjoy the famous Grant Park Farmers' Market. Don't feel like cooking? The Beacon offers a variety of restaurants for any palate. One of our largest floorplans, the Hightower is on the northeast corner of the building where you will wake up to a beautiful sunrise! Let's walk through the lavish upgrades and distinctive features that define this gorgeous home. Each home features timeless finish collections that include 42 inch white upper cabinetry, soft close doors, under cabinet lighting, Cambria quartz countertops, durable solid surface flooring, tiled bathrooms, raised vanities, Delta fixtures and GE Café SS Appliances. The open-concept layout seamlessly connects the living, dining, and kitchen areas, fostering a sense of spaciousness and unity. As you approach the entrance, be greeted by an expansive foyer with wood flooring that will lead you into your ...**

**Want to Know More  
About This Home?**

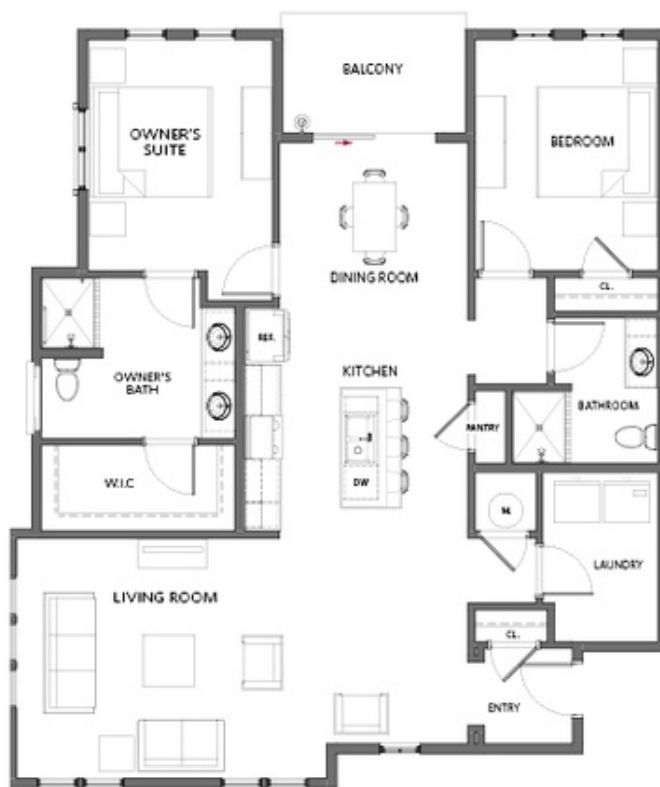
**CONTACT OUR COMMUNITY SALES MANAGER  
Call Us @ 470.955.0875**



2ND FLOOR	UNIT 1642	1742	1842
3RD FLOOR	UNIT 1643	1743	1843
4TH FLOOR	UNIT 1644	1744	1844

**Want to Know More  
About This Home?**

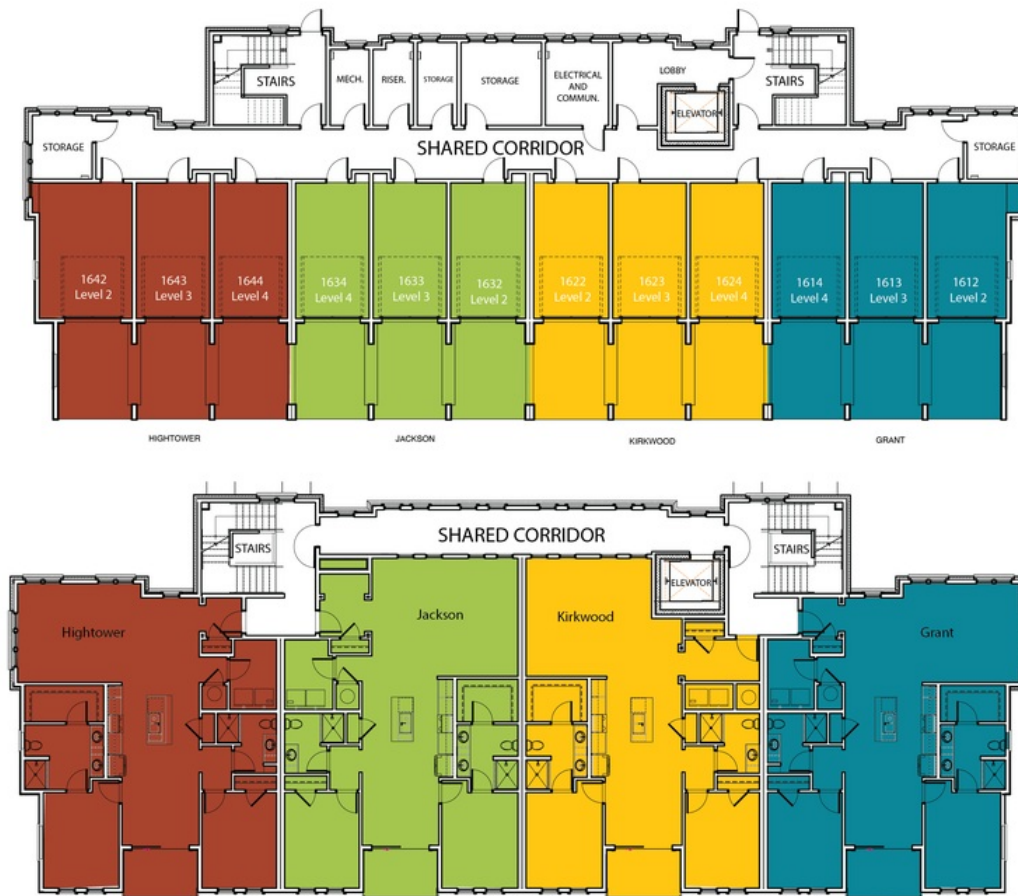
**CONTACT OUR COMMUNITY SALES MANAGER**  
**Call Us @ 470.955.0875**



2ND FLOOR	UNIT 1942	2042	2142
3RD FLOOR	UNIT 1943	2043	2143
4TH FLOOR	UNIT 1944	2044	2144

Want to Know More  
About This Home?

CONTACT OUR COMMUNITY SALES MANAGER  
Call Us @ 470.955.0875



Want to Know More  
About This Home?

CONTACT OUR COMMUNITY SALES MANAGER  
Call Us @ 470.955.0875



Want to Know More  
About This Home?

CONTACT OUR COMMUNITY SALES MANAGER  
Call Us @ 470.955.0875