



PRICED AT  
**\$519,900**

 1536 Sq Ft

 2 Beds

 2.0 Baths

 1 Car Garage

 2.0 Story

**New Year New Home New You! \*\*\*NOW FOR A LIMITED TIME ONLY!!!\*\*\* ~~~ Ask about our \$40K Anyway You Want It for qualified buyers for contracts written now through the end of February 2025. Live on the Beltline! Presented by The Providence Group, Grant Place is a boutique new construction community that sits quietly away from a pass-through street. Wake up on Sundays and step outside to enjoy the famous Grant Park Farmers' Market. Don't feel like cooking? The Beacon offers a variety of restaurants for any palate. One of our largest floorplans, the Hightower is on the northeast corner of the building where you will wake up to a beautiful sunrise! Let's walk through the lavish upgrades and distinctive features that define this gorgeous home. Each home features timeless finish collections that include 42 inch white upper cabinetry, soft close doors, under cabinet lighting, Cambria quartz countertops, durable solid surface flooring, tiled bathrooms, raised vanities, Delta fixtures and GE Café SS Appliances. The open-concept layout seamlessly connects the living, dining, and kitchen areas, fostering a sense of spaciousness and unity. As you approach the entrance, be greeted by an expansive foyer with wood flooring that will lead you into ...**

Want to Know More  
About This Home?

CONTACT OUR COMMUNITY SALES MANAGER  
Call Us @ 470.955.0875



2ND FLOOR	UNIT 1642   1742   1842
3RD FLOOR	UNIT 1643   1743   1843
4TH FLOOR	UNIT 1644   1744   1844

Want to Know More  
 About This Home?

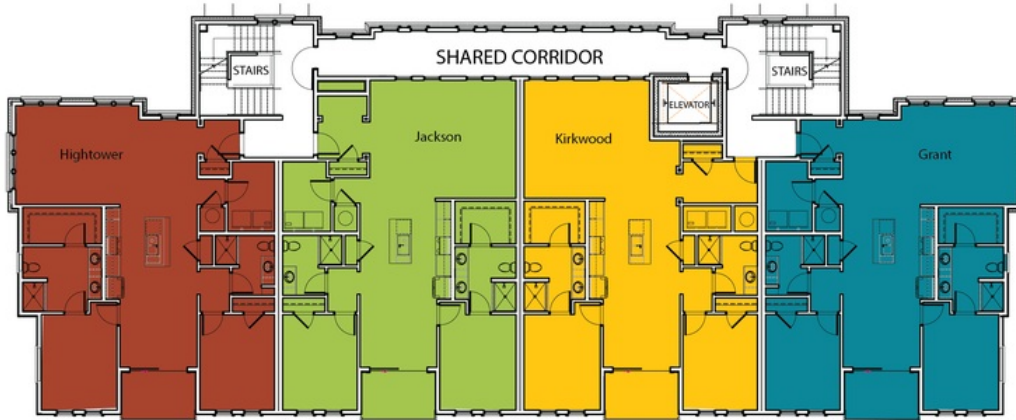
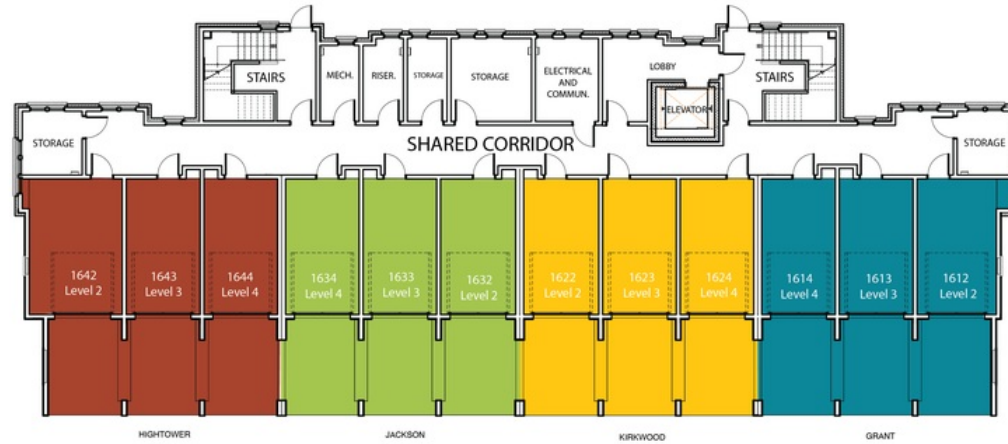
CONTACT OUR COMMUNITY SALES MANAGER  
 Call Us @ 470.955.0875



2ND FLOOR	UNIT 1942		2042		2142
3RD FLOOR	UNIT 1943		2043		2143
4TH FLOOR	UNIT 1944		2044		2144

Want to Know More  
 About This Home?

CONTACT OUR COMMUNITY SALES MANAGER  
 Call Us @ 470.955.0875



Want to Know More  
About This Home?

CONTACT OUR COMMUNITY SALES MANAGER  
Call Us @ 470.955.0875



Want to Know More  
About This Home?

CONTACT OUR COMMUNITY SALES MANAGER  
Call Us @ 470.955.0875