



PRICED AT
\$469,900

 **1480 Sq Ft**

 **2 Beds**

 **2.0 Baths**

 **1 Car Garage**

 **2.0 Story**

SPRING INTO A NEW HOME*RECENTLY REDUCED BY \$25K AND \$15k in CC with Seller Preferred Lender and Loan Officer. Welcome to Grant Place, a BRAND NEW boutique community that offers elevator service to your one level living home. Let's walk through the lavish upgrades and distinctive features that define this gorgeous home. Each home features timeless finish collections that include 42 inch wood upper cabinetry, soft close doors, under cabinet lighting, Cambria quartz countertops, durable solid surface flooring, tiled bathrooms, raised vanities, Delta fixtures and GE SS Appliances. The open-concept layout seamlessly connects the living, dining, and kitchen areas, fostering a sense of spaciousness and unity. As you approach the entrance, be greeted by an expansive foyer with wood flooring that will lead you into your light filled home, a living area with plenty of wall space to display art or your large screen TV, slide open your balcony door to dine alfresco on the covered balcony, step into one of the 2 bedrooms that sit apart from one another to give way for privacy. These spaces are all designed for you to entertain or relax after a long day. Each home offers a private one car garage and a ...**

**Want to Know More
About This Home?**

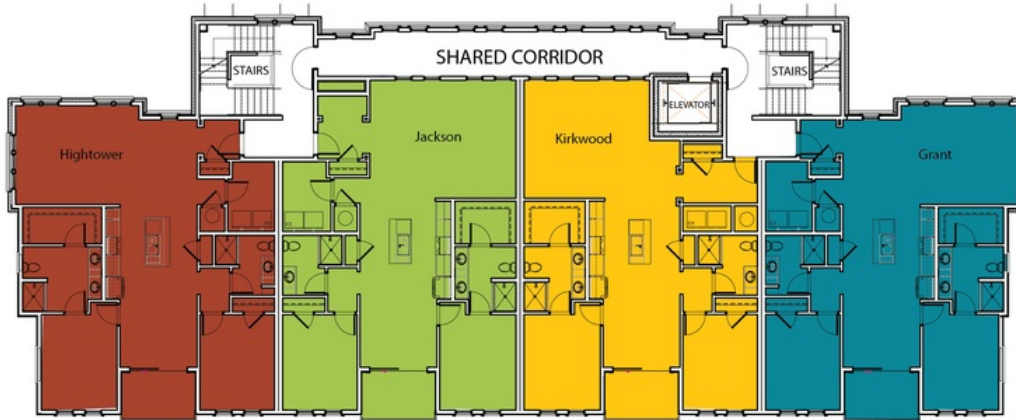
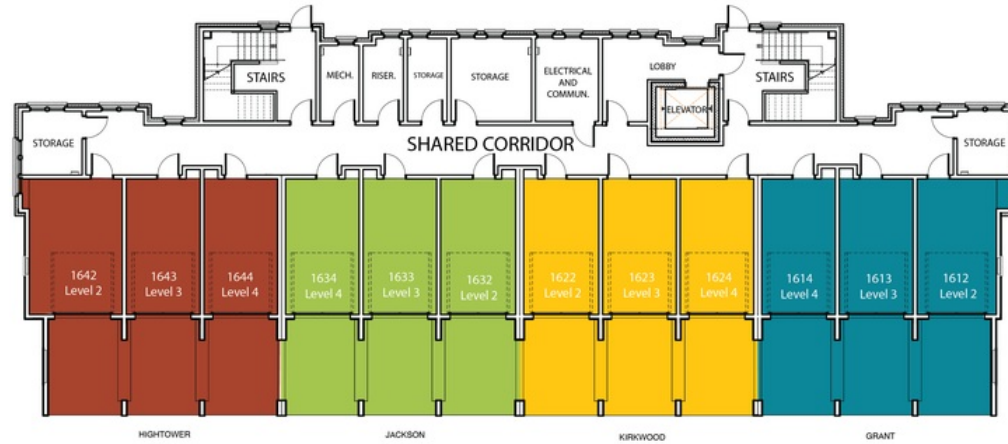
CONTACT OUR COMMUNITY SALES MANAGER
Call Us @ 470.955.0875



2ND FLOOR	UNIT 1622 1722 1822
3RD FLOOR	UNIT 1623 1723 1823
4TH FLOOR	UNIT 1624 1724 1824

Want to Know More
 About This Home?

CONTACT OUR COMMUNITY SALES MANAGER
 Call Us @ 470.955.0875



Want to Know More
About This Home?

CONTACT OUR COMMUNITY SALES MANAGER
Call Us @ 470.955.0875



2ND FLOOR	UNIT 1922		2022		2122
3RD FLOOR	UNIT 1923		2023		2123
4TH FLOOR	UNIT 1924		2024		2124

Want to Know More
 About This Home?

CONTACT OUR COMMUNITY SALES MANAGER
 Call Us @ 470.955.0875



Want to Know More
About This Home?

CONTACT OUR COMMUNITY SALES MANAGER
Call Us @ 470.955.0875