



PRICED AT
\$460,820

 **1480 Sq Ft**

 **2 Beds**

 **2.0 Baths**

 **1 Car Garage**

 **2.0 Story**

FABULOUS FALL SAVINGS*NOW FOR A LIMITED TIME ONLY!!!*** Ask about our 4.875% interest rate, now through September 30th 2024 ~~~Move in ready-Full Size Washer/Dryer and GE Café Refrigerator PLUS STORAGE UNIT! If your idea of a good location is direct access to the Beltline, and dining then welcome to Grant Place! A BRAND NEW quiet boutique community that offers a private garages with an additional covered carport and elevator service to your one level living home. Located in the 1900 building, you only have 12 neighbors spanning over 4 floors! Our KIRKWOOD plan, Unit 1923, offers open concept living with 2 bedrooms separated for privacy each with their own bathroom. Upon entering, you have an expansive foyer with a coat closet and closet for full size side by side washer/dryer! The foyer leads you into your oversized living area with enough wall space for Art and to hang a big screen TV! Gather around your kitchen island when entertaining or have a sit down dinner in your dining room that overlooks your covered balcony. These spaces are all designed for you to entertain or relax after a long day. Our exquisitely designed KIRKWOOD floorplan, where sophistication meets modern luxury in ...**

**Want to Know More
About This Home?**

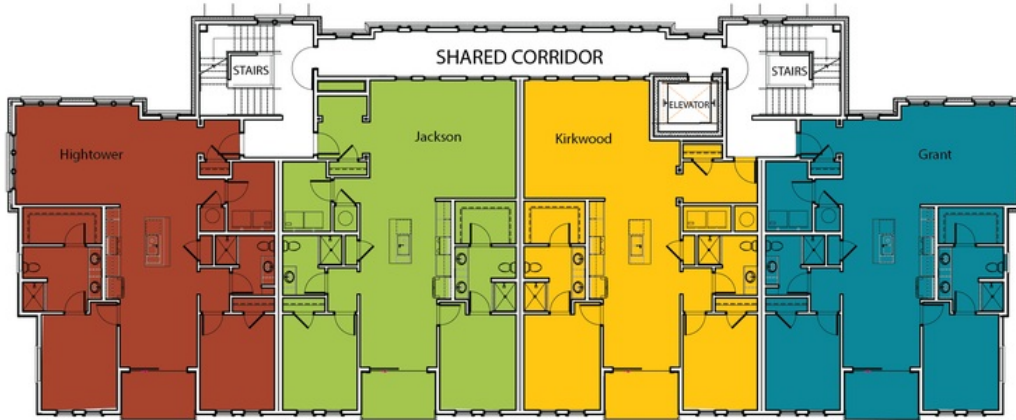
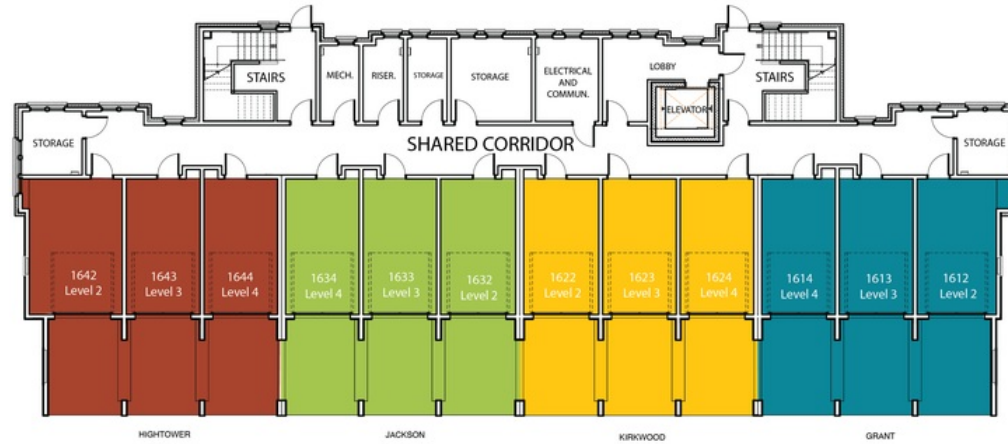
CONTACT OUR COMMUNITY SALES MANAGER
Call Us @ 470.955.0875



2ND FLOOR	UNIT 1622	1722	1822
3RD FLOOR	UNIT 1623	1723	1823
4TH FLOOR	UNIT 1624	1724	1824

Want to Know More
 About This Home?

CONTACT OUR COMMUNITY SALES MANAGER
 Call Us @ 470.955.0875



Want to Know More
About This Home?

CONTACT OUR COMMUNITY SALES MANAGER
Call Us @ 470.955.0875



2ND FLOOR	UNIT 1922		2022		2122
3RD FLOOR	UNIT 1923		2023		2123
4TH FLOOR	UNIT 1924		2024		2124

Want to Know More
 About This Home?

CONTACT OUR COMMUNITY SALES MANAGER
 Call Us @ 470.955.0875



Garage Assignment
Building 1600

Want to Know More
About This Home?

CONTACT OUR COMMUNITY SALES MANAGER
Call Us @ 470.955.0875