



PRICED AT

\$630,730

 **2360 Sq Ft**

 **4 Beds**

 **3.0 Baths**

 **2 Car Garage**

 **2.0 Story**

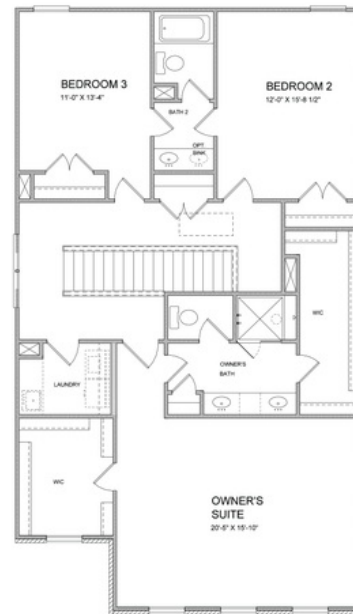
Spring into a New Home - with a brand new home By The Providence Group! Lots of interior upgrades in this home! The Tensley floor plan will feature 10' Ceilings and 8' doors on the main floor giving this plan a grand feeling as soon as you enter. The family room is a desirable open concept with fireplace and a slider door leading out to the covered patio, the family room is also a cozy spot for entertaining and gatherings looking into the beautiful gourmet kitchen showcasing stacked Bright white cabinets at the perimeter, double oven, generous island with pendant lights, Quartz kitchen countertops, and single bowl kitchen sink. Lastly on the main floor is a guest retreat and full bathroom featuring a convenient walk in shower which is a great feature for visitors. On the 2nd floor, the spacious Owner's Suite has separate his and hers closets, separate vanities with marble counters and frameless walk in shower. There is a Jack and Jill bathroom with double vanities for the upstairs 2 bedrooms. This home has a lot of thought put into its design and features. Courtyard home with patio that is fenced for all of our pet friends. Great ...

**Want to Know More
About This Home?**

**CONTACT OUR COMMUNITY SALES MANAGER
Call Us @ 470.248.2097**



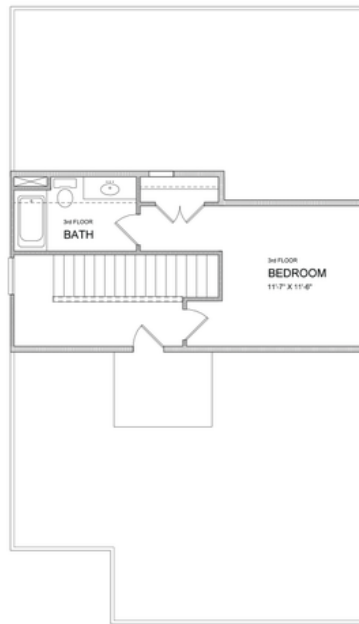
First Floor



Second Floor

**Want to Know More
About This Home?**

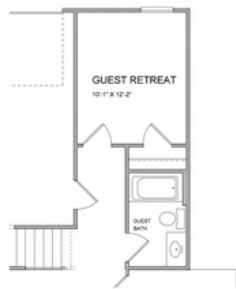
CONTACT OUR COMMUNITY SALES MANAGER
Call Us @ 470.248.2097



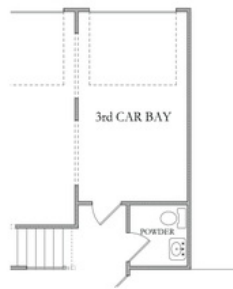
Optional Third Floor

**Want to Know More
About This Home?**

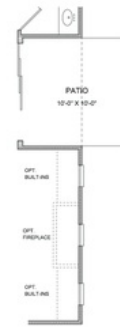
CONTACT OUR COMMUNITY SALES MANAGER
Call Us @ 470.248.2097



OPTIONAL GUEST RETREAT w/ FULL BATH



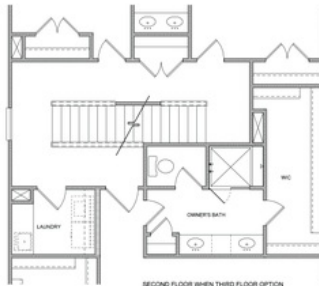
OPTIONAL 3rd CAR GARAGE BAY



OPTIONAL 9' SLIDING GLASS DOOR



OPTIONAL OFFICE 1 w/ LO FOYER



SECOND FLOOR WHEN THIRD FLOOR OPTION



OPTIONAL OWNER'S BATH WITH TUB AND SHOWER

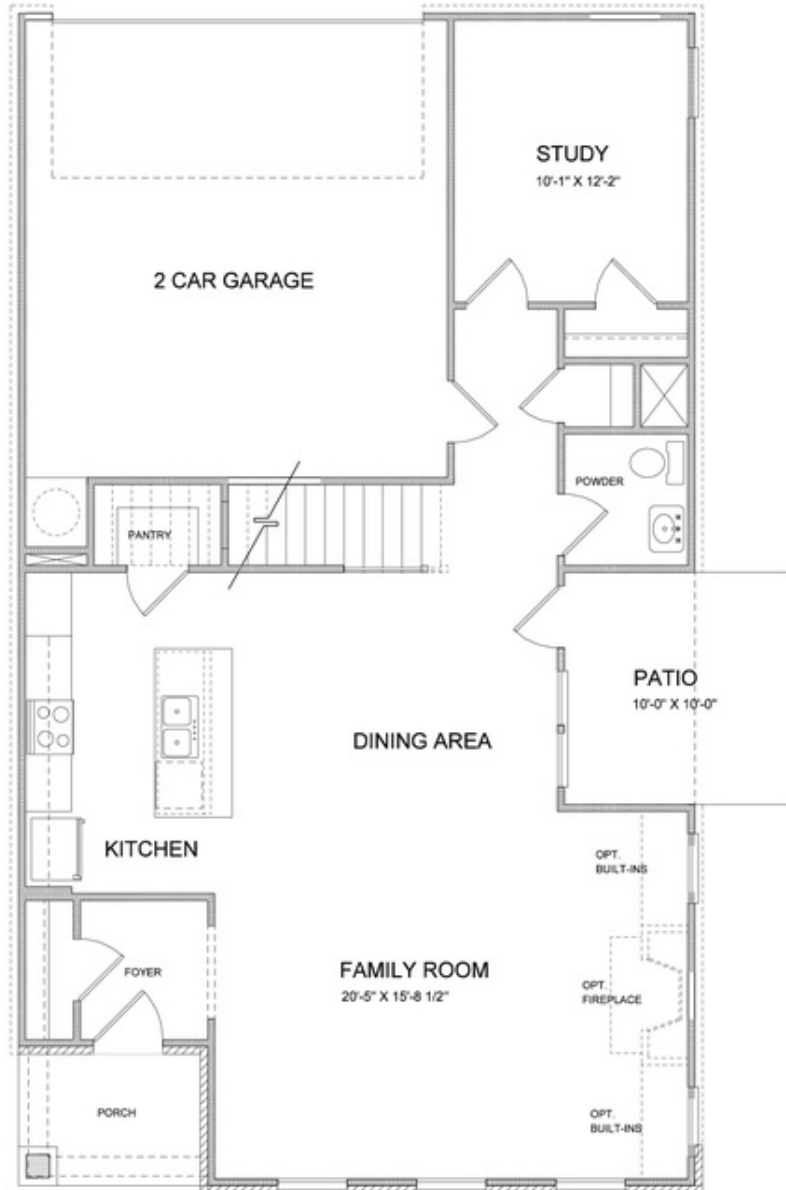


OPTIONAL OFFICE 2 w/ ENLARGED WIC

All Options

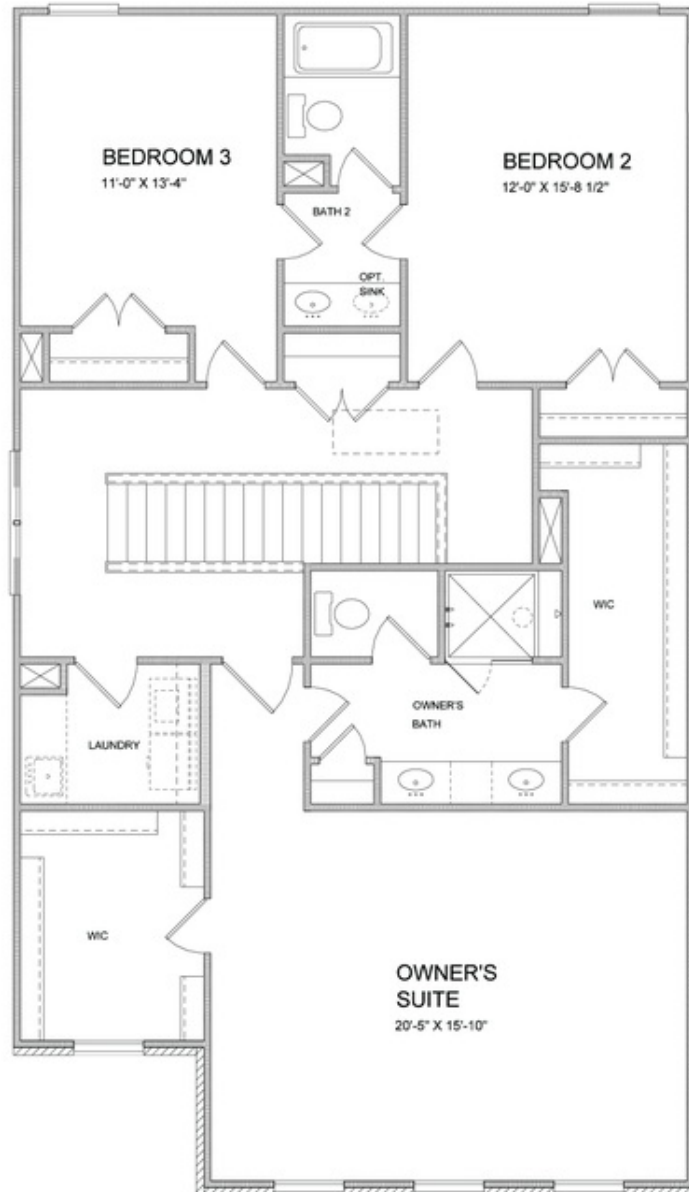
Want to Know More
 About This Home?

CONTACT OUR COMMUNITY SALES MANAGER
 Call Us @ 470.248.2097



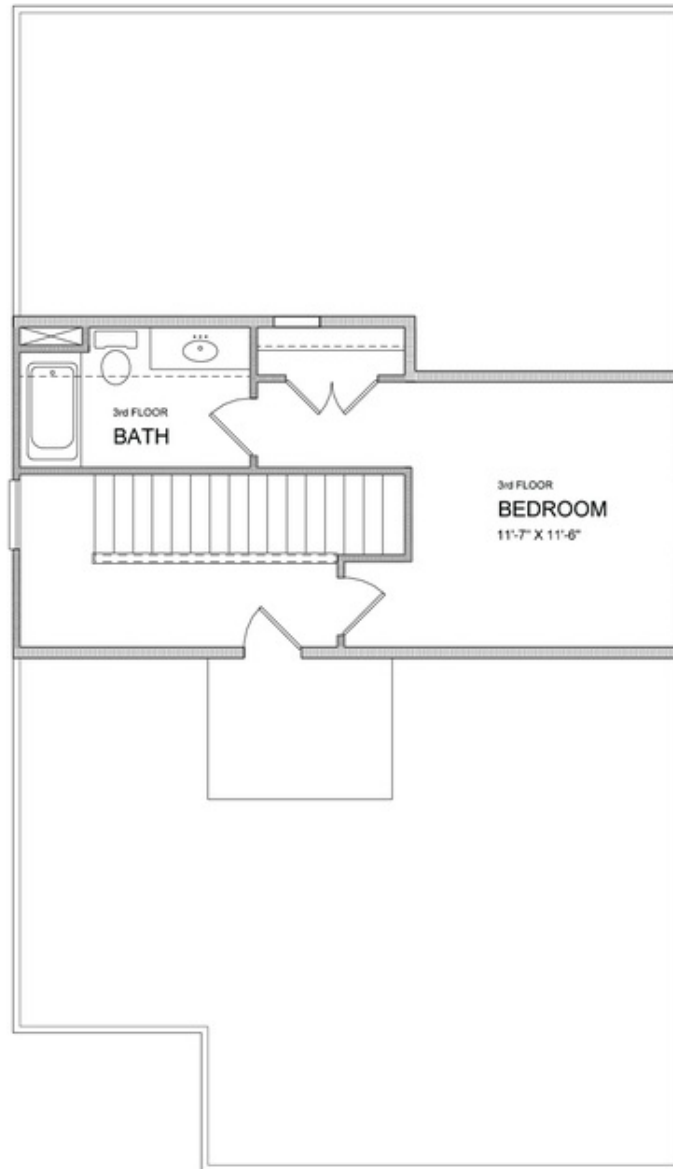
Want to Know More
About This Home?

CONTACT OUR COMMUNITY SALES MANAGER
Call Us @ 470.248.2097



Want to Know More
About This Home?

CONTACT OUR COMMUNITY SALES MANAGER
Call Us @ 470.248.2097

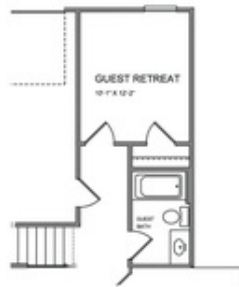


Optional 3rd Floor

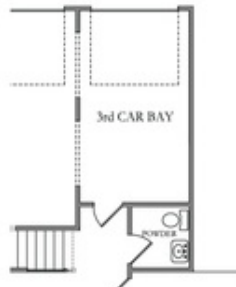
Want to Know More
About This Home?

CONTACT OUR COMMUNITY SALES MANAGER
Call Us @ 470.248.2097

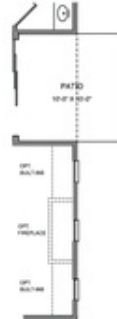
Options



OPT Guest Retreat w/ Full Bath



OPT 3rd Car Garage Bay



OPT 9' Sliding Glass Door



OPT Office 1 ilo Foyer

First Floor
 Options



OPT Owner's Tub & Shower Combo



OPT Office 2 ilo Enlarged WIC

Second Floor
 Options

Want to Know More
 About This Home?

CONTACT OUR COMMUNITY SALES MANAGER
 Call Us @ 470.248.2097