



PRICED AT
\$608,630

 **2518 Sq Ft**

 **4 Beds**

 **3.0 Baths**

 **2 Car Garage**

 **3.0 Story**

This stunning new construction courtyard home boasts designer upgrades throughout, with exquisite attention to detail. Hard surface floors flow from the foyer entrance throughout the main floor. The open concept main floor features a bedroom/office, perfect for a home workspace or guest suite. Impressive gourmet kitchen with stacked white cabinets, quartz countertops, high-end appliances and stunning backsplash, overlooks the spacious living area, making it perfect for entertaining. Head upstairs to the owner's suite that includes a fantastic walk-in closet and spa like bathroom with modern fixtures, stylish tile work and ample storage. There are two additional secondary bedrooms and a loft providing additional space to work or relax. Overall, this impressive home offers luxurious living and effortless entertaining in a desirable location. **Elevate your life in 2023 with a new home by The Providence Group and \$5,000 towards closing cost when financing with one of Seller's 4 preferred lenders New Construction by The Providence Group in Buford/Sugar Hill! Close to 3 vibrant downtown areas including Suwanee, Buford, and Sugar Hill! Great home to make yours today and relax for the upcoming holidays! Yes, they are coming! Community offers swim/pavilion, fitness center, and firepit. Master Planned Community with you in mind! Home ...**

**Want to Know More
About This Home?**

**CONTACT OUR COMMUNITY SALES MANAGER
Call Us @ 470.248.2097**



Want to Know More
About This Home?

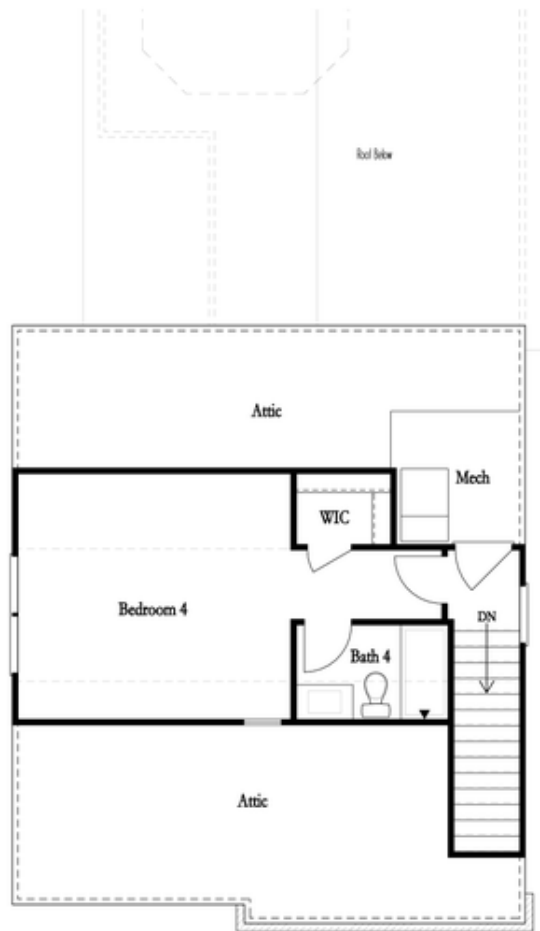
CONTACT OUR COMMUNITY SALES MANAGER
Call Us @ 470.248.2097



Second Floor

Want to Know More
About This Home?

CONTACT OUR COMMUNITY SALES MANAGER
Call Us @ 470.248.2097

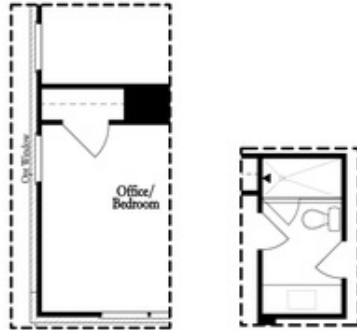


Optional Third Floor

Want to Know More
About This Home?

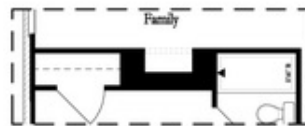
CONTACT OUR COMMUNITY SALES MANAGER
Call Us @ 470.248.2097

Options



Opt Left Side Window
@ Office/Bedroom

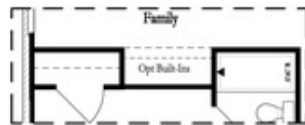
Opt Shower
@ Bath 3



Opt Linear Fireplace



Opt Fireplace



Opt Nook

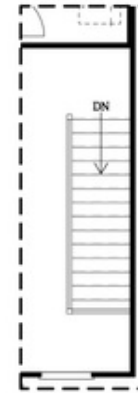


Opt Closet

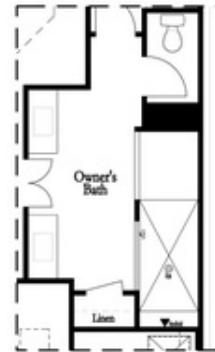
First Floor Options



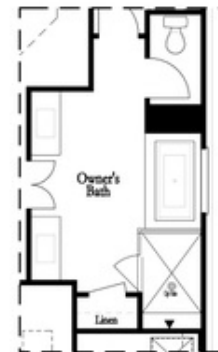
Opt Left Side Window
@ Bedroom 3



Opt Open Rail



Opt Walk-Thru Shower



Opt Tub/Shower Combo

Second Floor Options

Want to Know More
About This Home?

CONTACT OUR COMMUNITY SALES MANAGER
Call Us @ 470.248.2097