




PRICED AT  
**\$602,240**

 2375 Sq Ft

 4 Beds

 3.0 Baths

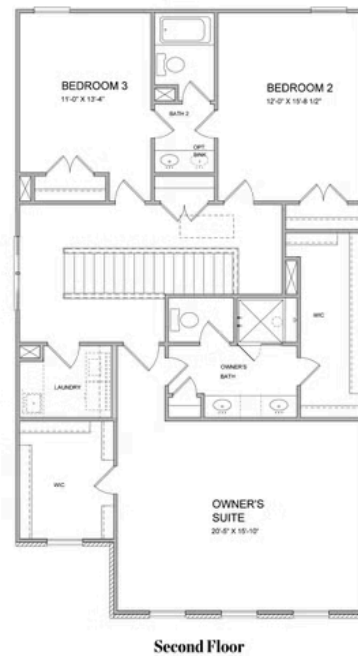
 2 Car Garage

 2.0 Story

Tensley Floorplan - New Construction - By The Providence Group! This home has a spacious feel with 10 ft. Ceilings on the main floor and an open concept. The family room features a cozy fireplace to enjoy on those chilly rainy days and winter evenings! The gourmet kitchen has stacked white cabinets at the perimeter and the island has willow gray stain. Quartz kitchen countertops, tile backsplash, stainless appliances and single bowl kitchen sink finish out the well designed kitchen. There is a private guest retreat on the main floor and a full bath with tiled shower. The Huge Owner's Suite has separate his and hers closets, separate vanities with quartz counters and walk in shower. There is a shared bathroom layout with dual vanity for the upstairs secondary bedrooms. The laundry room is conveniently located upstairs close to the bedrooms. This home is on trend for 2023! Lots of interior upgrades! Courtyard home with patio and fantastic location within the community. Great home to make yours today and get ready to enjoy your new home for 2023! Home is under construction and estimated to be completed in May/June 2023. Pictures represent a previously built home by The Providence Group, ...

**Want to Know More  
About This Home?**

CONTACT OUR COMMUNITY SALES MANAGER  
Call Us @ 470.248.2097



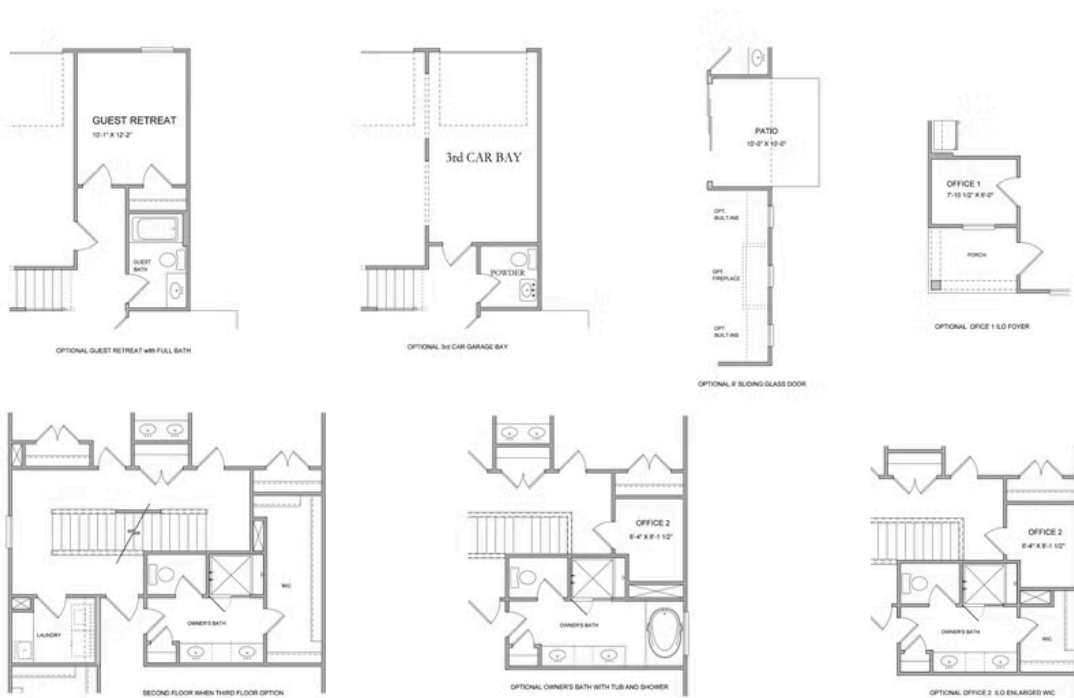
Want to Know More  
About This Home?

CONTACT OUR COMMUNITY SALES MANAGER  
Call Us @ 470.248.2097



Want to Know More  
About This Home?

CONTACT OUR COMMUNITY SALES MANAGER  
Call Us @ 470.248.2097



All Options

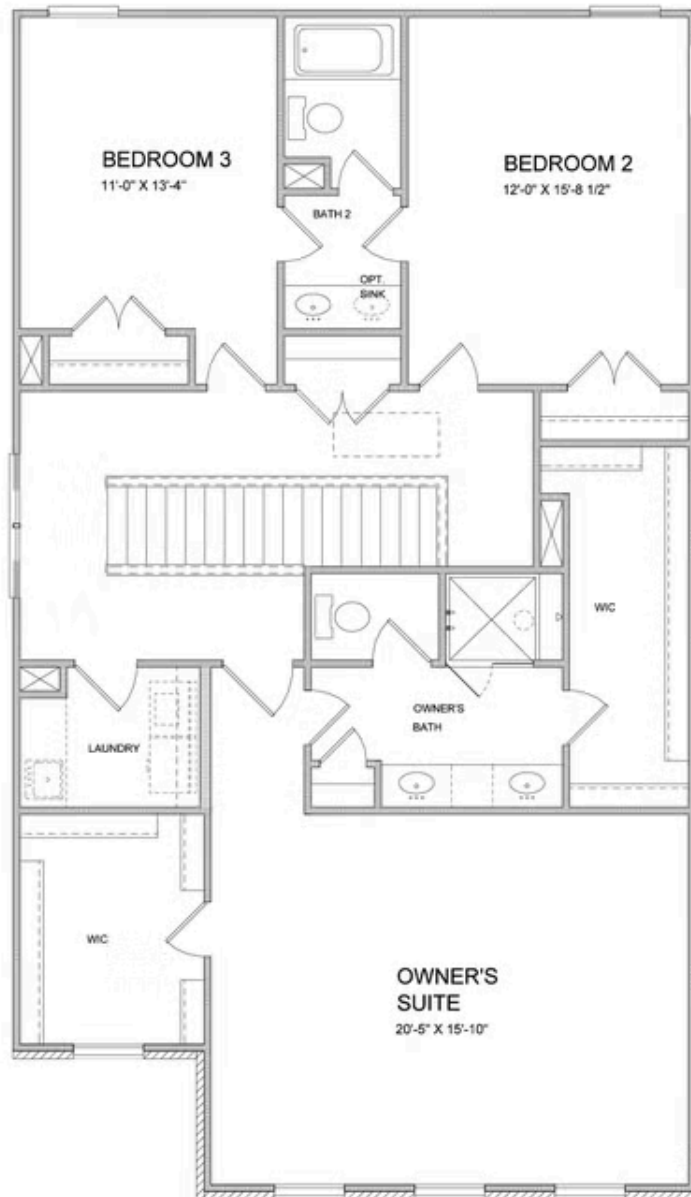
Want to Know More  
About This Home?

CONTACT OUR COMMUNITY SALES MANAGER  
Call Us @ 470.248.2097



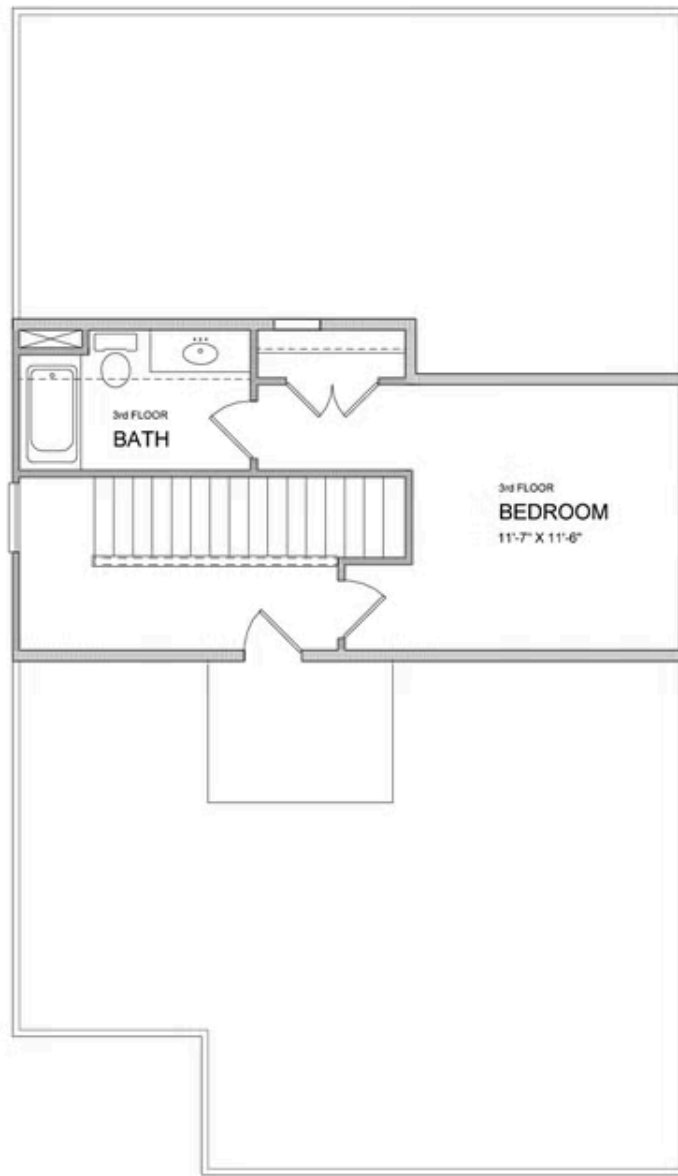
Want to Know More  
About This Home?

CONTACT OUR COMMUNITY SALES MANAGER  
Call Us @ 470.248.2097



**Want to Know More  
About This Home?**

CONTACT OUR COMMUNITY SALES MANAGER  
Call Us @ 470.248.2097

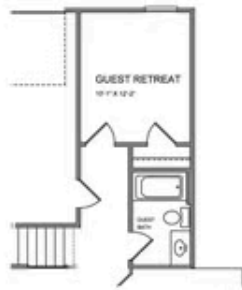


Optional 3rd Floor

Want to Know More  
About This Home?

CONTACT OUR COMMUNITY SALES MANAGER  
Call Us @ 470.248.2097

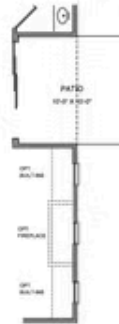
### Options



OPT Guest Retreat w/ Full Bath



OPT 3rd Car Garage Bay



OPT 9' Sliding Glass Door

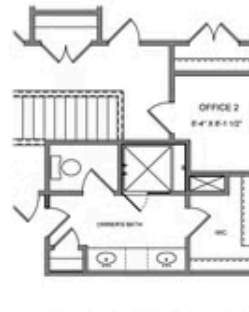


OPT Office 1 ilo Foyer

### First Floor Options



OPT Owner's Tub & Shower Combo



OPT Office 2 ilo Enlarged WIC

### Second Floor Options

Want to Know More  
About This Home?

CONTACT OUR COMMUNITY SALES MANAGER  
Call Us @ 470.248.2097