



PRICED AT
\$645,300

 2764 Sq Ft

 3 Beds

 2.5 Baths

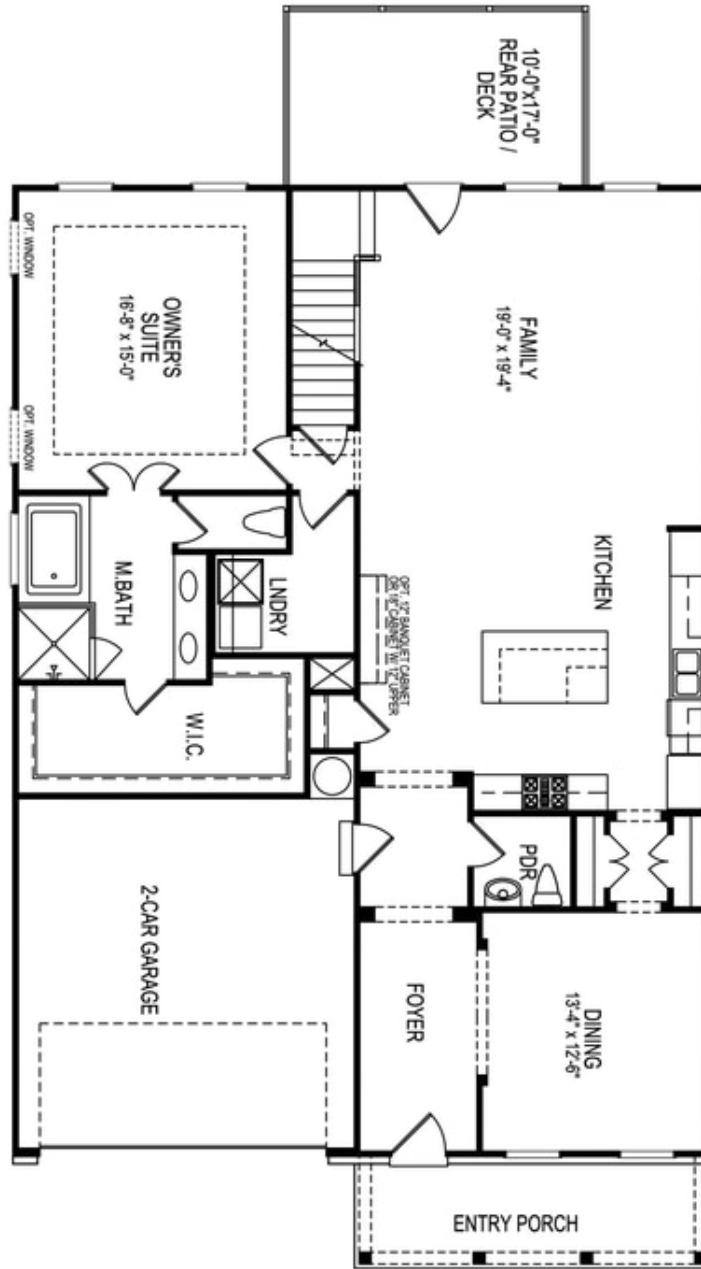
 2 Car Garage

 2.0 Story

****Elevate your life in 2023 with a new home by The Providence Group and \$5,000 towards closing cost when financing with one of Seller's 4 preferred lenders**** The Madilyn D has a beautiful farmhouse elevation and front porch with metal roof. Highly sought after MASTER ON MAIN floor plan! New Construction in Buford/Sugar Hill! Close to 3 vibrant downtown areas including Suwanee, Buford, and Sugar Hill! This master on main is a jewel & features a tray ceiling in the master bedroom, large owners closet, master bathroom with double vanity, walk in shower and freestanding soaking tub, AND easy access to the laundry room since it is on the main level. The Madilyn has 10 ft. Ceilings on the main floor, a foyer entrance, open kitchen and family room, fireplace, sunroom, and separate dining room with butlers pantry. The kitchen will feature Quartz countertops, a single bowl sink & stainless appliances. Cooking will be fun as you enjoy family and friends in this open concept home! Beautiful design features such as hardwood floors on main living space and designer lighting fixtures. The 2 secondary bedrooms are on the 2nd floor and have a Jack and Jill bath layout. The Loft ...

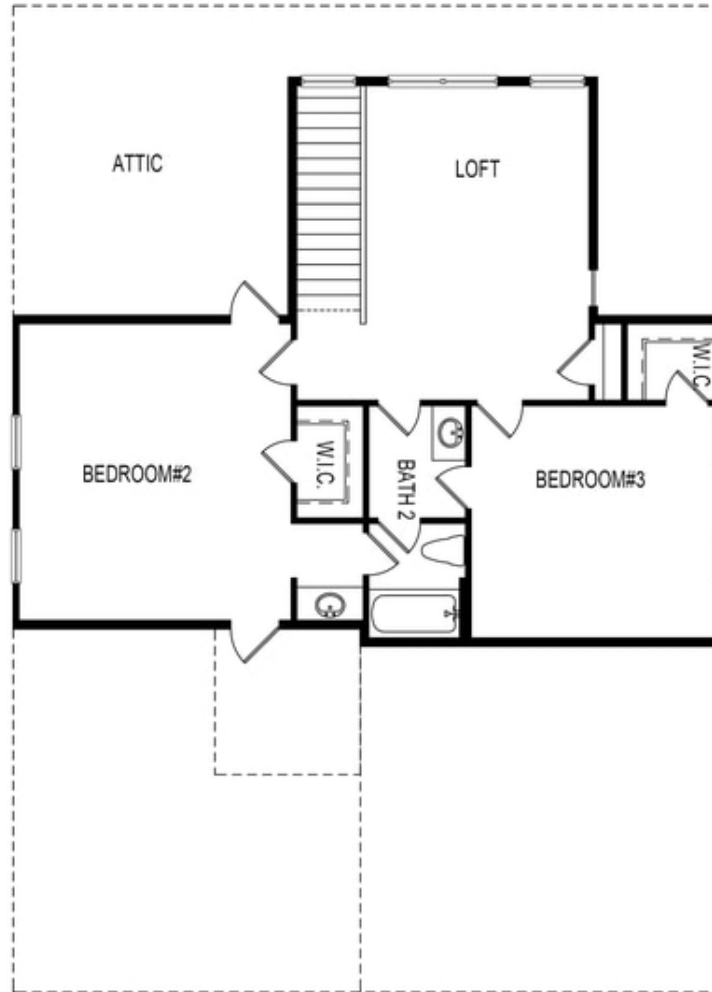
**Want to Know More
About This Home?**

CONTACT OUR COMMUNITY SALES MANAGER
Call Us @ 470.248.2097



Want to Know More
About This Home?

CONTACT OUR COMMUNITY SALES MANAGER
Call Us @ 470.248.2097

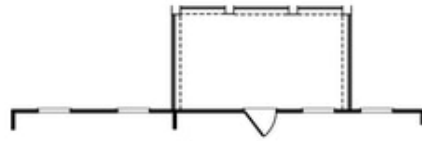


Second Floor

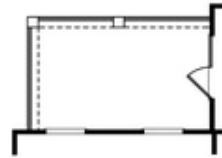
**Want to Know More
About This Home?**

CONTACT OUR COMMUNITY SALES MANAGER
Call Us @ 470.248.2097

Options



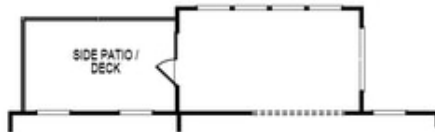
OPT Covered Patio/Deck



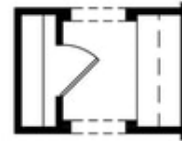
OPT Covered Side Patio/Deck



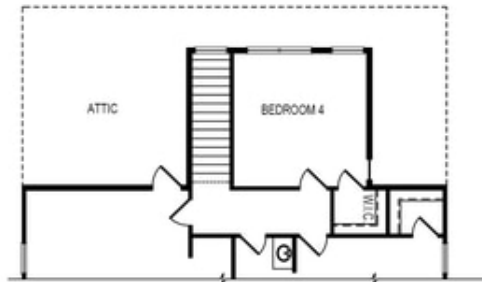
OPT Fireplace
 w. Opt Built-Ins



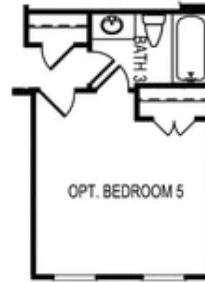
OPT Sunroom



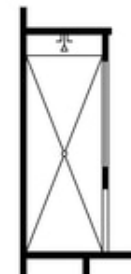
OPT Butler's Pantry



OPT Bedroom 4 ilo Loft



OPT Bedroom 5
 ilo Dining Room



OPT Owner's
 Walk-In Shower

**Want to Know More
 About This Home?**

CONTACT OUR COMMUNITY SALES MANAGER
 Call Us @ 470.248.2097