



PRICED AT
\$605,475

 2375 Sq Ft

 4 Beds

 3.0 Baths

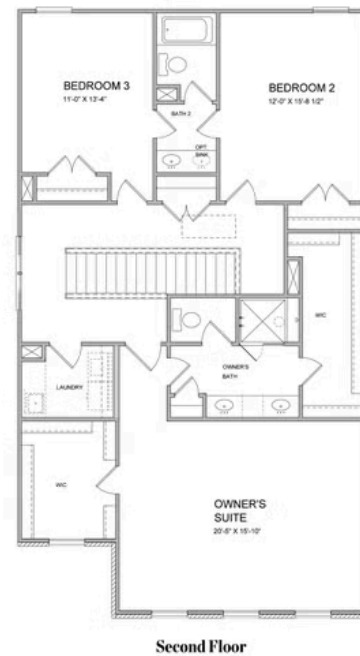
 2 Car Garage

 2.0 Story

Move in Ready!!!! ELEVATE YOUR LIFE IN 2023! NEW YEAR NEW PRICE PLUS \$20,000 ANY WAY YOU WANT IT ON CONTRACTS WRITTEN BY MARCH 31, 2023- New Construction! By The Providence Group! Lots of interior upgrades! The 10' Ceilings and 8' doors on the main floor give this plan a grand feeling. The family room with a fireplace and quartzite surround is a cozy spot for gatherings. The beautiful, gourmet kitchen has Bright white cabinets at the perimeter and large island with driftwood stain, Quartz kitchen countertops, and single bowl kitchen sink. Lastly on the main floor is a guest retreat with a private bath which is a great feature for visitors. On the 2nd floor, the spacious Owner's Suite has separate his and hers closets, separate vanities with quartz counters and frameless, walk in shower. There is a Jack and Jill bathroom layout for the upstairs bedrooms. This home has a lot of thought put into its design and features. Courtyard home with patio and fantastic slider door option! Great home to make yours today and get ready to enjoy your new home for 2023! Home is MOVE IN READY! Pictures represent a previously built home by The Providence ...

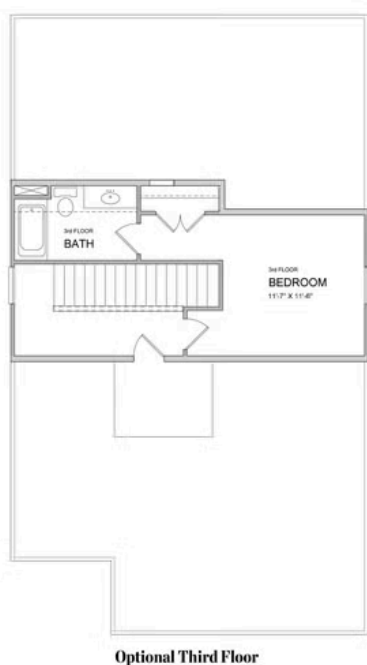
Want to Know More
About This Home?

CONTACT OUR COMMUNITY SALES MANAGER
Call Us @ 470.248.2097



**Want to Know More
About This Home?**

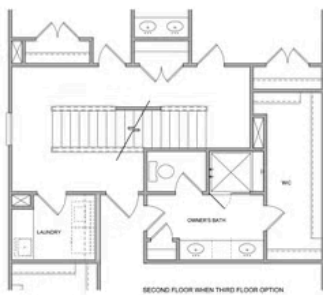
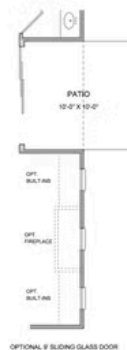
CONTACT OUR COMMUNITY SALES MANAGER
Call Us @ 470.248.2097



Optional Third Floor

Want to Know More
About This Home?

CONTACT OUR COMMUNITY SALES MANAGER
Call Us @ 470.248.2097



All Options

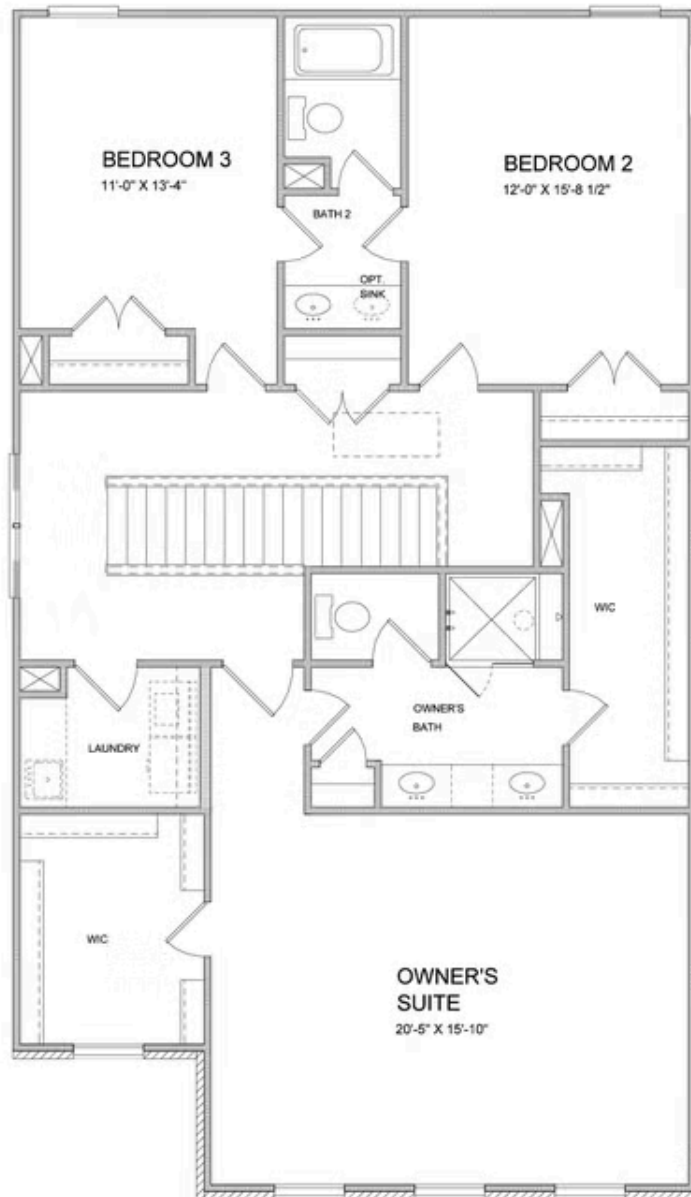
Want to Know More
About This Home?

CONTACT OUR COMMUNITY SALES MANAGER
Call Us @ 470.248.2097



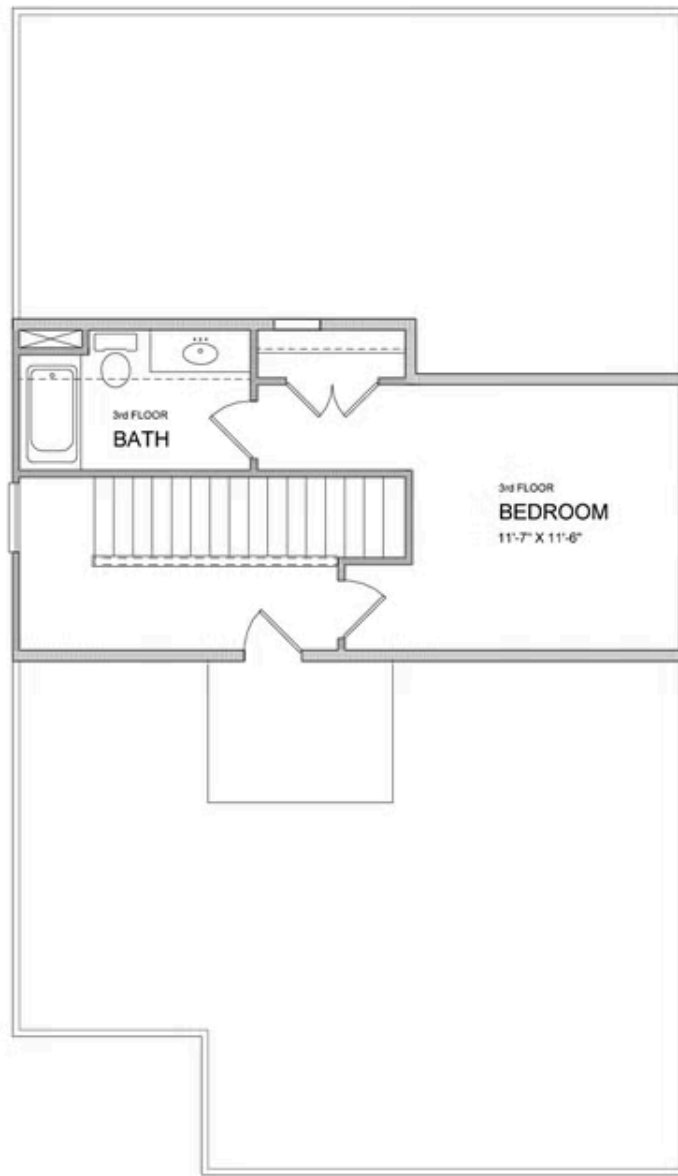
Want to Know More
About This Home?

CONTACT OUR COMMUNITY SALES MANAGER
Call Us @ 470.248.2097



**Want to Know More
About This Home?**

CONTACT OUR COMMUNITY SALES MANAGER
Call Us @ 470.248.2097

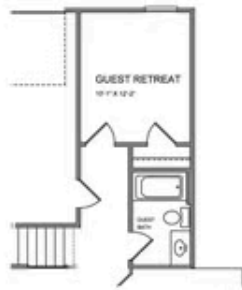


Optional 3rd Floor

Want to Know More
About This Home?

CONTACT OUR COMMUNITY SALES MANAGER
Call Us @ 470.248.2097

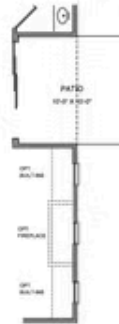
Options



OPT Guest Retreat w/ Full Bath



OPT 3rd Car Garage Bay



OPT 9' Sliding Glass Door

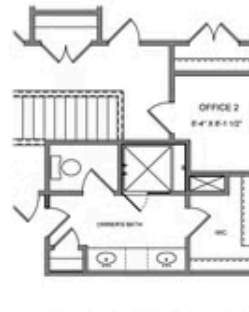


OPT Office 1 ilo Foyer

First Floor Options



OPT Owner's Tub & Shower Combo



OPT Office 2 ilo Enlarged WIC

Second Floor Options

Want to Know More
About This Home?

CONTACT OUR COMMUNITY SALES MANAGER
Call Us @ 470.248.2097