



PRICED AT  
**\$622,675**

 **2236 Sq Ft**

 **4 Beds**

 **3.5 Baths**

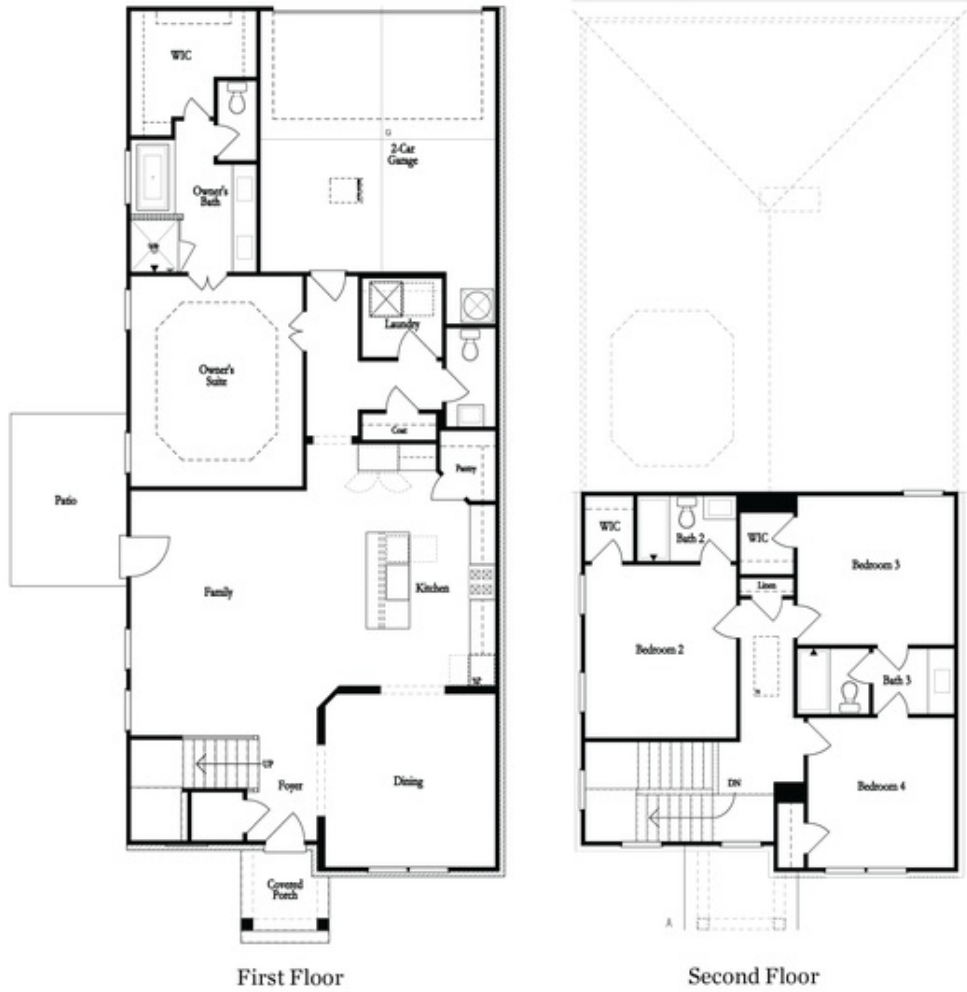
 **2 Car Garage**

 **2.0 Story**

**Sizzling Summer Savings by The Providence Group! \*MASTER ON MAIN in Millcroft\*\* Final Opportunities for master on main and make your own interior design selections at our fabulous design studio! Charleston C - Elevate your Life in this coming next year 2025 with a New Home by The Providence Group! 4 bedroom, 3.5 bath, 2 story, NEW Construction, Fabulous, Wow! Brand New! The first floor offers 10ft. Ceilings, owners suite with a HUGE Walk in shower in the Owner's bathroom, dual vanities, walk in closet, and easy access to the laundry room and powder room. The kitchen is a fabulous layout with a large luxurious island overlooking the family room with cozy fireplace. This home also features a separate yet open concept dining room to enjoy with family and friends for get togethers. The 2nd floor has 9ft ceilings with 3 additional bedrooms and 2 baths. Remember you can still choose your cabinets, countertops, etc for a very limited time only. BONUS -there is an Outdoor Storage Shed - attached to home for your seasonal items, bikes and toys. Side patio with courtyard comes fenced and is a great area to enjoy outside. This home has lots of interior design ...**

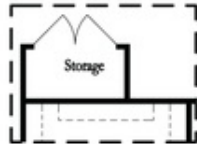
**Want to Know More  
About This Home?**

**CONTACT OUR COMMUNITY SALES MANAGER**  
**Call Us @ 470.248.2097**

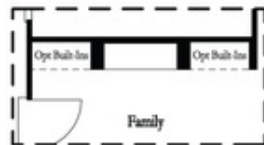


Want to Know More  
About This Home?

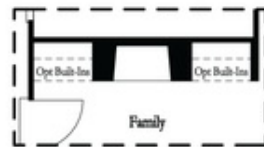
CONTACT OUR COMMUNITY SALES MANAGER  
Call Us @ 470.248.2097



Optional Storage Room

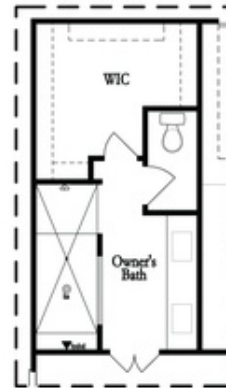


Optional Linear Fireplace



Optional Direct Vent Fireplace

First Floor Options



Optional Walk-Thru Shower

Second Floor Options

Want to Know More  
 About This Home?

CONTACT OUR COMMUNITY SALES MANAGER  
 Call Us @ 470.248.2097