



PRICED AT
\$670,510

 2236 Sq Ft

 4 Beds

 3.5 Baths

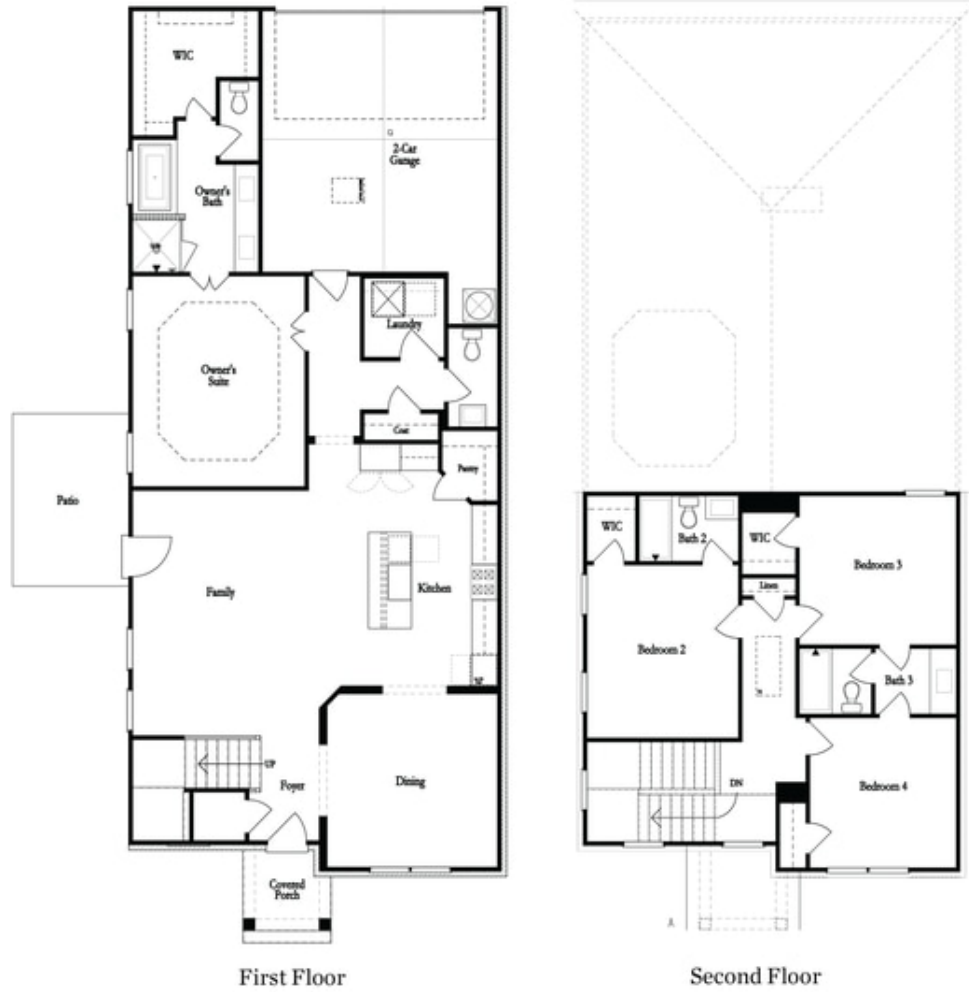
 2 Car Garage

 2.0 Story

Sizzling Summer Savings by The Providence Group *Last Master on Main in Millcroft** Charleston C By The Providence Group - Elevate your Life in 2024 with a New Home by The Providence Group! Highly Sought After MASTER ON MAIN! 4 bedroom, 3.5 bath, 2 story, NEW Construction, Fabulous, Wow! Brand New! The first floor offers 10ft. Ceilings, owners suite with a HUGE Walk in shower in the Owner's bathroom, dual vanities, walk in closet, and easy access to the laundry room and powder room. The kitchen is a fabulous layout with double oven, trash can pull out, stacked white upper cabinets, single bowl white sink, and a large luxurious island overlooking the family room with cozy fireplace featuring shiplap. This home also features a separate yet open concept dining room to enjoy with family and friends for get togethers. The 2nd floor has 9ft ceilings with 3 additional bedrooms and 2 baths. BONUS -there is an Outdoor Storage Shed - attached to home for your seasonal items, bikes and toys. Side patio with courtyard comes fenced and is a great area to enjoy outside. This home has lots of interior design upgrades already included! Highly Sought after community featuring a ...

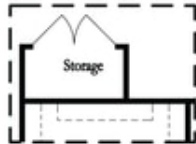
**Want to Know More
About This Home?**

CONTACT OUR COMMUNITY SALES MANAGER
Call Us @ 470.248.2097

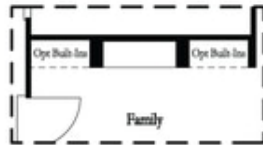


**Want to Know More
 About This Home?**

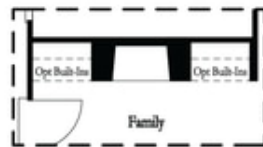
CONTACT OUR COMMUNITY SALES MANAGER
 Call Us @ 470.248.2097



Optional Storage Room

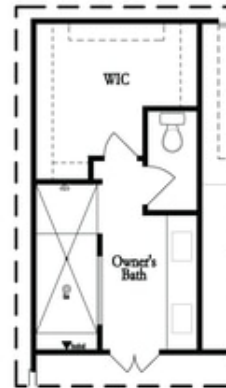


Optional Linear Fireplace



Optional Direct Vent Fireplace

First Floor Options



Optional Walk-Thru Shower

Second Floor Options

**Want to Know More
 About This Home?**

CONTACT OUR COMMUNITY SALES MANAGER
 Call Us @ 470.248.2097