



PRICED FROM
\$653,400

 2,734 - 3,333 Sq Ft

 5 - 6 Beds

 3 - 5 Baths

 2 Car Garage

 2.0 - 3.0 Story

- Gourmet Kitchen with Island overlooking Dining and Family Room
- Owner's Suite and Private Bath with Dual Vanities and Over Sized Walk-In Closet on Upper Level
- Secondary Bedrooms and Laundry on Upper Level
- Two Car Garage

[Read More Online](#)

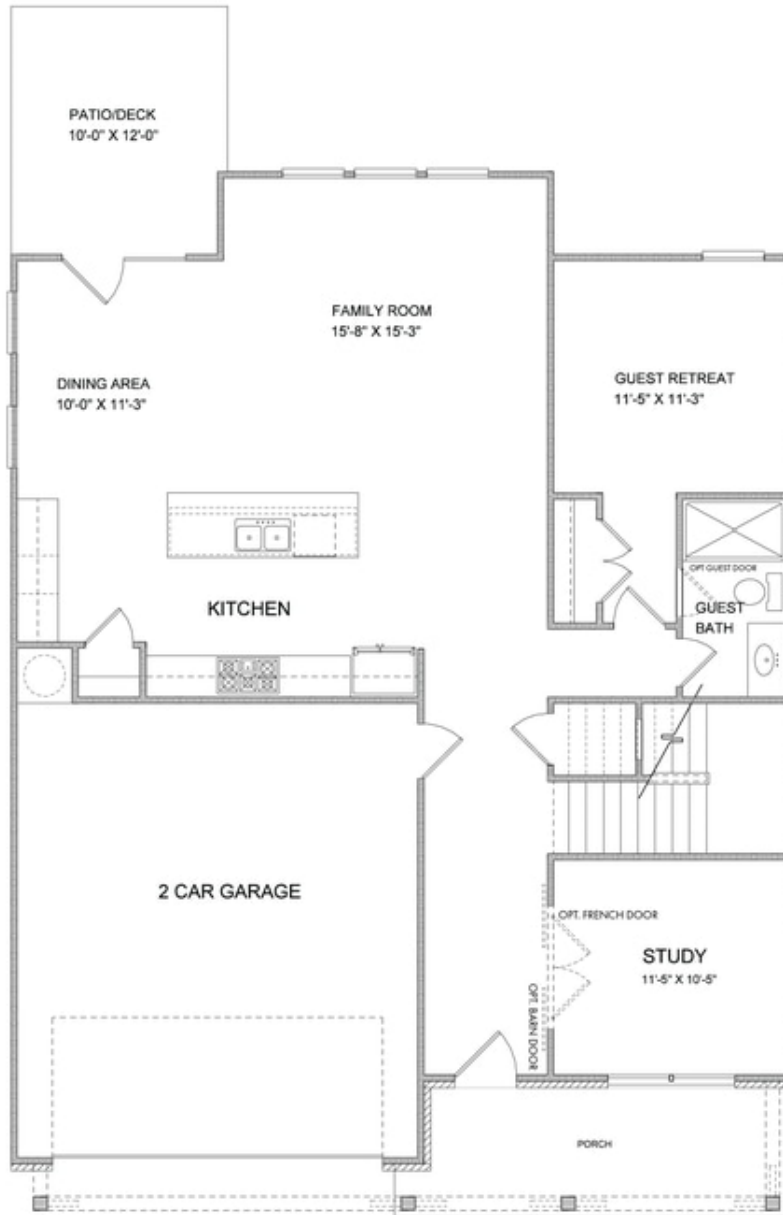
Available Elevations



Elevation A

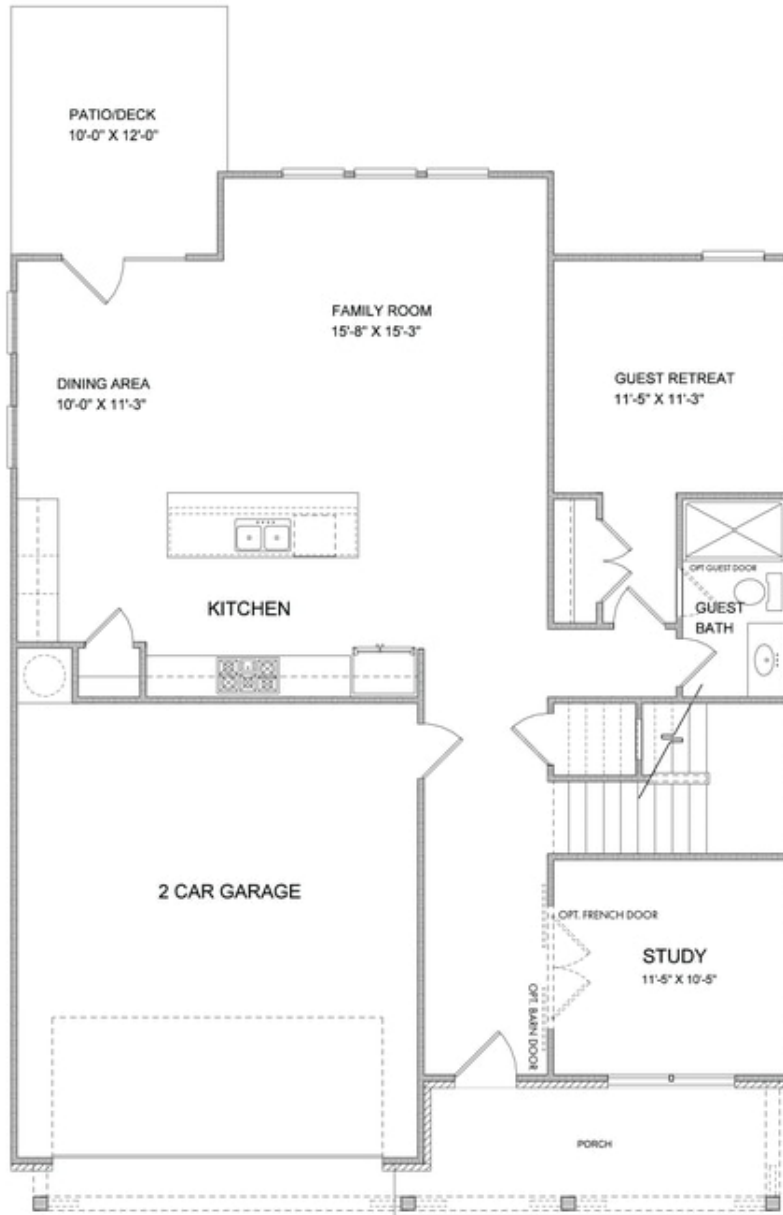


Elevation B



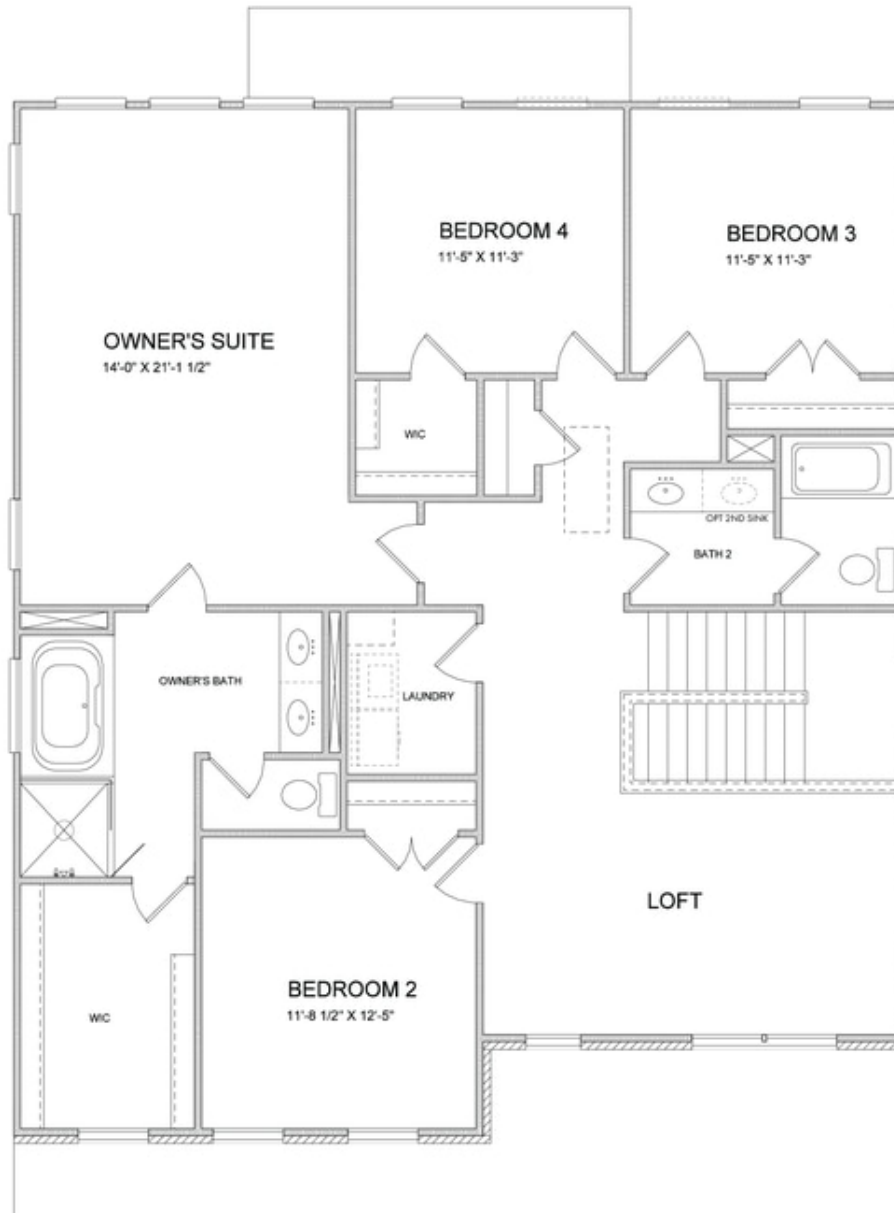
**Want to Know More
About This Home?**

CONTACT OUR COMMUNITY SALES MANAGER
Call Us @ 470.248.2097



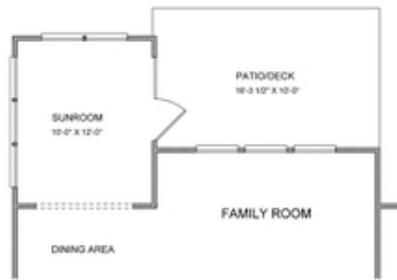
**Want to Know More
About This Home?**

CONTACT OUR COMMUNITY SALES MANAGER
Call Us @ 470.248.2097

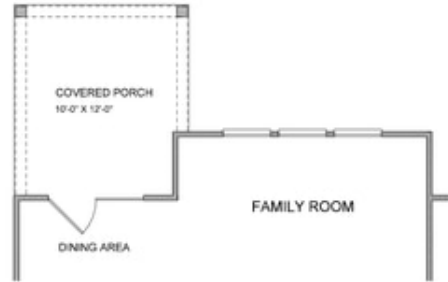


**Want to Know More
About This Home?**

CONTACT OUR COMMUNITY SALES MANAGER
Call Us @ 470.248.2097



Opt. Sunroom



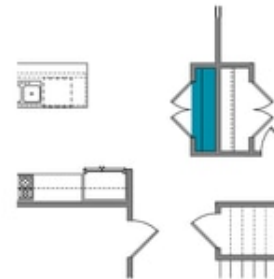
Opt. Covered Porch



Opt. Fireplace



Opt. Rear Fireplace



Opt. Pantry

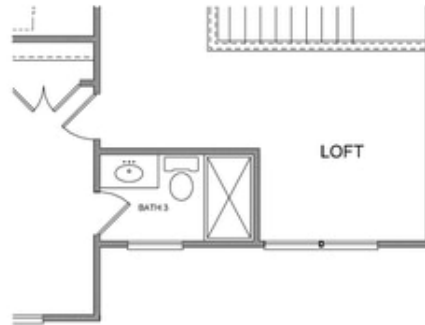
Want to Know More
About This Home?

CONTACT OUR COMMUNITY SALES MANAGER
Call Us @ 470.248.2097



**Want to Know More
About This Home?**

CONTACT OUR COMMUNITY SALES MANAGER
Call Us @ 470.248.2097



Opt. 3rd Bath



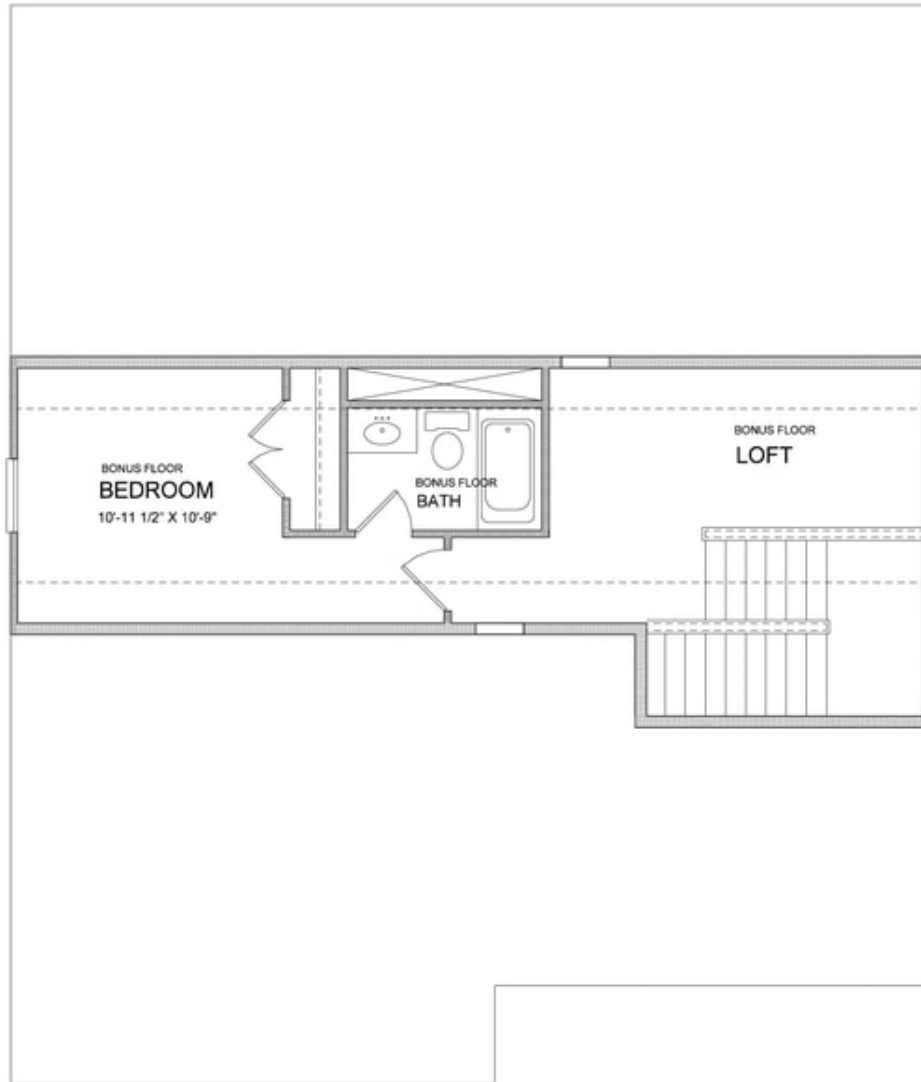
Opt. Owner's Sitting Room



Opt. Owner's Walk-in Shower

**Want to Know More
About This Home?**

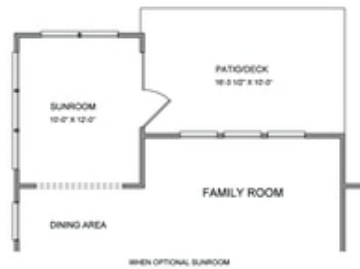
CONTACT OUR COMMUNITY SALES MANAGER
Call Us @ 470.248.2097



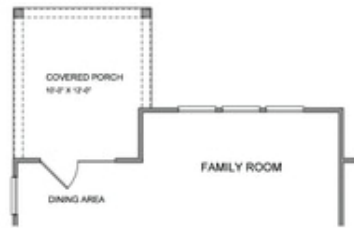
**Want to Know More
About This Home?**

CONTACT OUR COMMUNITY SALES MANAGER
Call Us @ 470.248.2097

Optional Layouts
First Floor



WHEN OPTIONAL SUNROOM



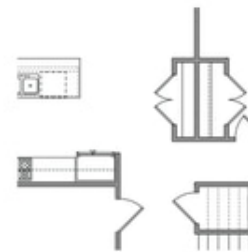
WHEN OPTIONAL COVERED PORCH



WHEN OPTIONAL FIREPLACE



WHEN OPTIONAL REAR FIREPLACE



WHEN OPTIONAL PANTRY

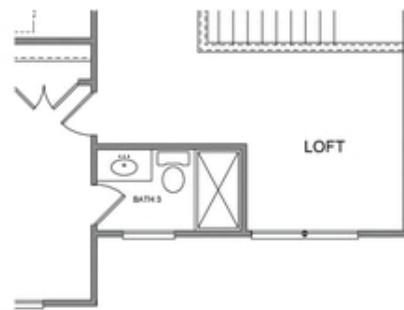
Want to Know More
About This Home?

CONTACT OUR COMMUNITY SALES MANAGER
Call Us @ 470.248.2097

Optional Layouts
Second Floor

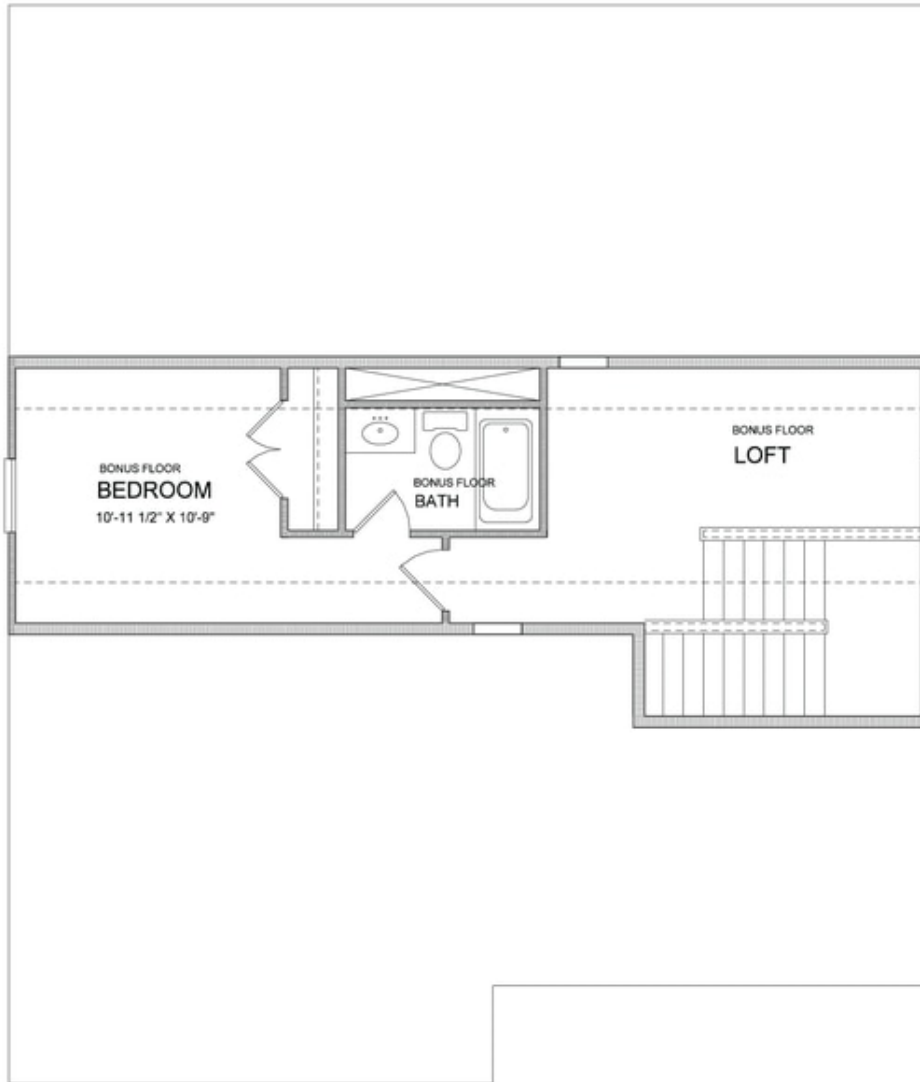


WHEN OPTIONAL OWNER'S WALK-IN SHOWER



**Want to Know More
About This Home?**

CONTACT OUR COMMUNITY SALES MANAGER
Call Us @ 470.248.2097



**Want to Know More
About This Home?**

CONTACT OUR COMMUNITY SALES MANAGER
Call Us @ 470.248.2097