



PRICED FROM
\$668,400

 **2,852 - 3,922 Sq Ft**

 **3 - 6 Beds**

 **2.5 - 6 Baths**

 **2 Car Garage**

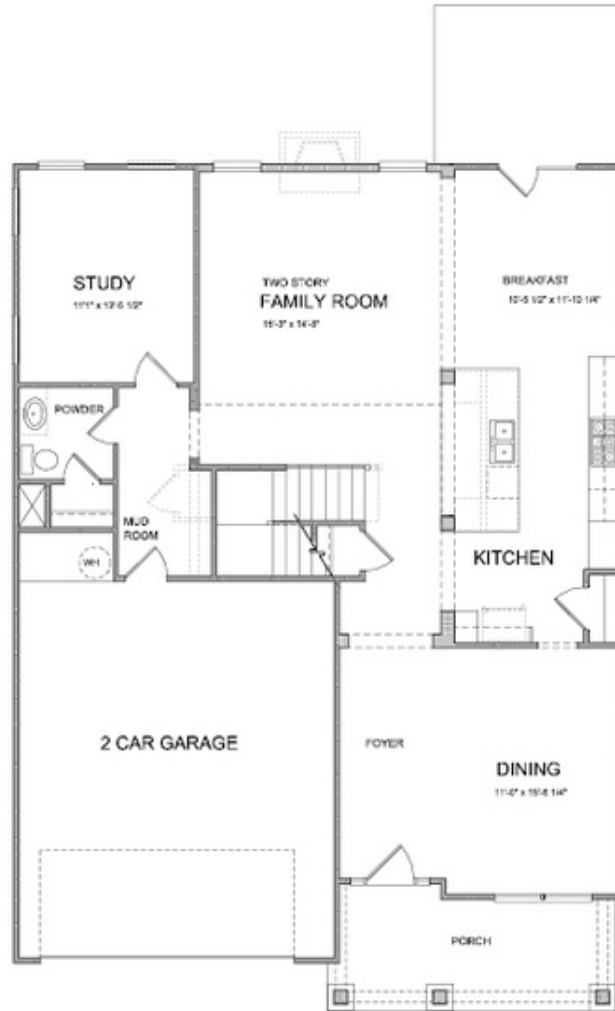
 **3.0 Story**

- **Open Main Level Layout with Private Study and Formal Dining Room**
- **Optional Sunroom with Fireplace and Access to Deck/Patio**
- **Spacious Owner's Suite with Dual Walk-In Closets, Separate Tub, Shower and Dual Vanities**
- **Optional Third Level Retreat with Bedroom, Bonus Room and Large Storage Area**
- **Additional Bedroom Options To Provide Three to Six Bedrooms**
- **Optional Media Room On Upper Level**

[Read More Online](#)

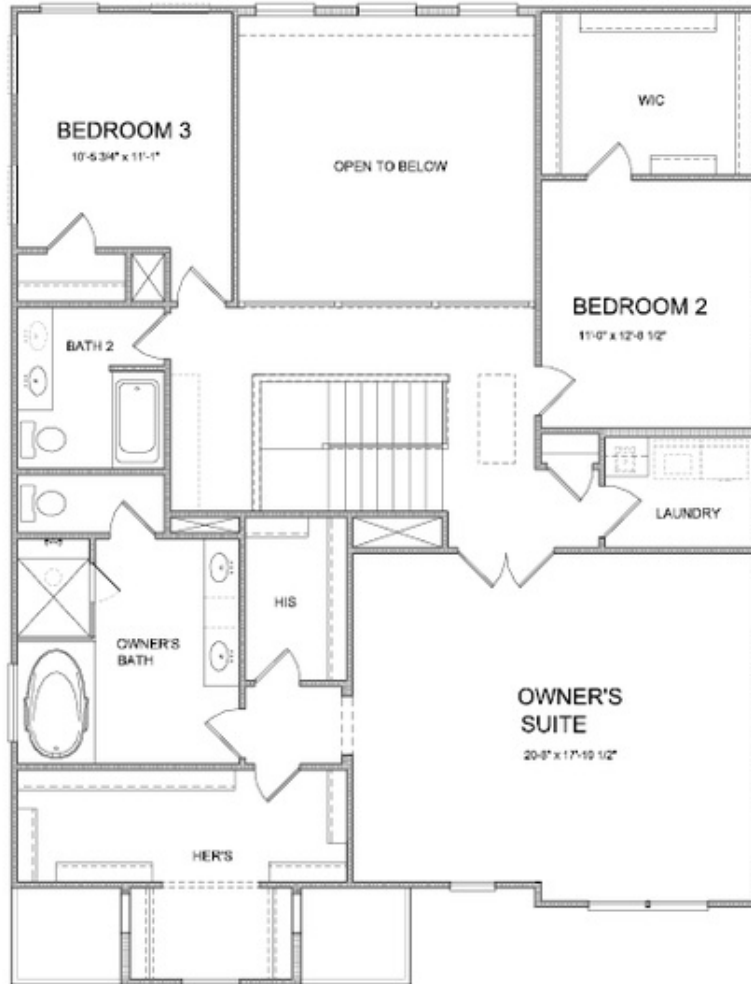
Available Elevations





Want to Know More
About This Home?

CONTACT OUR COMMUNITY SALES MANAGER
Call Us @ 470.248.2097



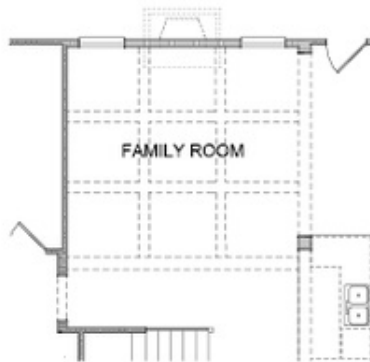
Want to Know More
About This Home?

CONTACT OUR COMMUNITY SALES MANAGER
Call Us @ 470.248.2097



Want to Know More
About This Home?

CONTACT OUR COMMUNITY SALES MANAGER
Call Us @ 470.248.2097



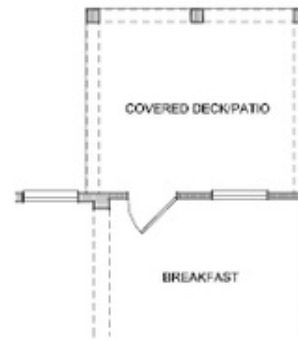
*Opt. Coffered Ceilings
 w/ Opt. Media Room or Bedroom 5 above*



*Opt. Bedroom 4 w/ Full Bath
 as Study & Power Room*



Opt. Sunroom



Opt. Covered Deck/Patio

**Want to Know More
 About This Home?**

CONTACT OUR COMMUNITY SALES MANAGER
Call Us @ 470.248.2097



Opt. Full Bath 3
 on Bedroom 2



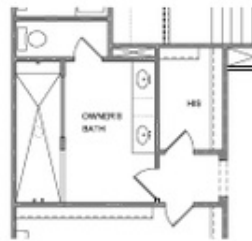
Opt. In-Law Suite on
 Bedroom 3



Opt. Bedroom 5
 w/ Open Ceiling on Family Room



Opt. Bedroom 5 w/ Full Bath
 w/ Open Ceiling on Family Room



Opt. Walk-In Shower



Opt. Media Room
 w/ Open Ceiling on Family Room

Want to Know More
 About This Home?

CONTACT OUR COMMUNITY SALES MANAGER
 Call Us @ 470.248.2097