



PRICED FROM
\$584,400

 **2,236 - 2,263 Sq Ft**

 **4 Beds**

 **3.5 Baths**

 **2 Car Garage**

 **2.0 Story**

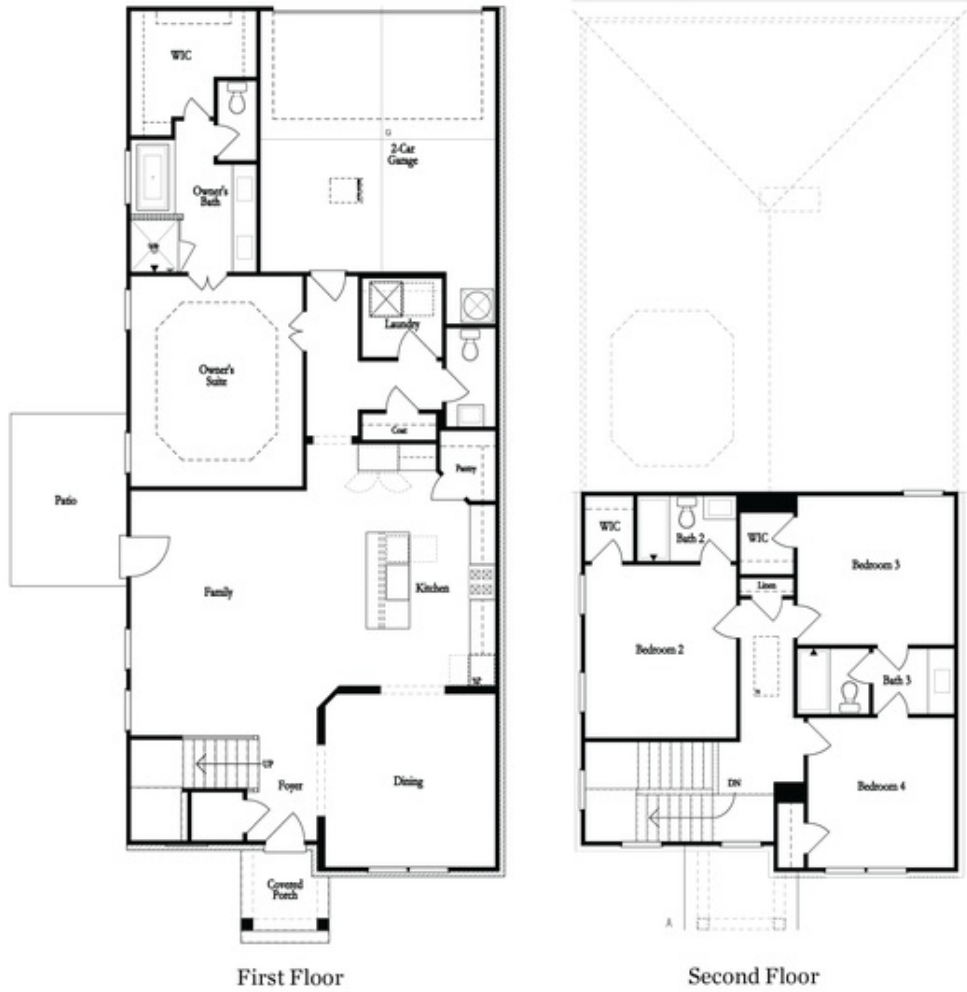
- **Separate Formal Dining Room**
- **Open Main Level Layout Spacious Family Room with Access to Outdoor Living**
- **Gourmet Kitchen with Island and Walk In Pantry**
- **Three Additional Bedrooms on the Upper Level with Full or Shared Bath**
- **Two Car Rear Entry Garage**

[Read More Online](#)

Available Elevations

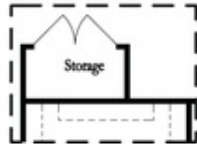


Elevation C

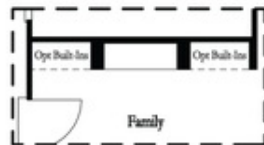


Want to Know More
About This Home?

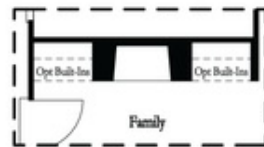
CONTACT OUR COMMUNITY SALES MANAGER
Call Us @ 470.248.2097



Optional Storage Room

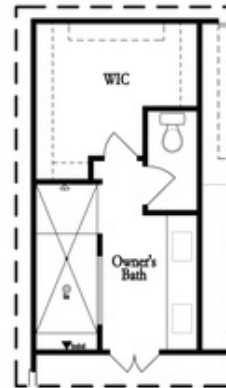


Optional Linear Fireplace



Optional Direct Vent Fireplace

First Floor Options



Optional Walk-Thru Shower

Second Floor Options

Want to Know More
 About This Home?

CONTACT OUR COMMUNITY SALES MANAGER
 Call Us @ 470.248.2097