



PRICED FROM
\$599,400

 **2,479 - 2,859 Sq Ft**

 **3 - 5 Beds**

 **3 - 4 Baths**

 **2 Car Garage**

 **3.0 Story**

- **Spacious Kitchen with Island with Access to Private Covered Porch**
- **Open Main Level Layout Ideal for Entertaining**
- **Private Owner's Retreat with Covered Patio, Large Bath with Dual Vanities and Huge Walk In Closet**
- **Guest Bedroom or Home Office on Main Level**
- **Two Secondary Bedrooms and Office/Loft Area on Upper Level**
- **Optional Third Level Retreat with Additional Bedroom, Full Bath and Walk In Closet**
- **Two Car Rear Entry Garage**

[Read More Online](#)

Available Elevations



Elevation B



Elevation C



Elevation D



Elevation E

Please refer to actual blueprints for an accurate representation of home design. Home design and elevations subject to change without prior notice. Window, door and porch locations may vary by elevation. Subject to error, omission or withdrawal.



Want to Know More
About This Home?

CONTACT OUR COMMUNITY SALES MANAGER
Call Us @ 470.248.2097



Second Floor

Want to Know More
About This Home?

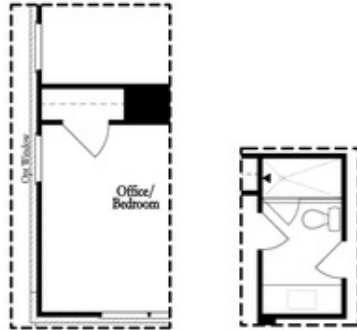
CONTACT OUR COMMUNITY SALES MANAGER
Call Us @ 470.248.2097



Optional Third Floor

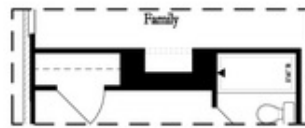
Want to Know More
About This Home?

CONTACT OUR COMMUNITY SALES MANAGER
Call Us @ 470.248.2097



Opt Left Side Window
@ Office/Bedroom

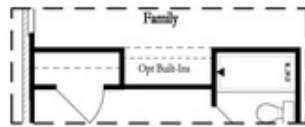
Opt Shower
@ Bath 3



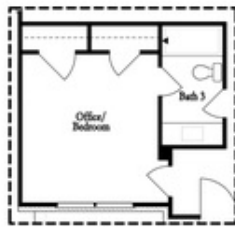
Opt Linear Fireplace



Opt Fireplace



Opt Nook



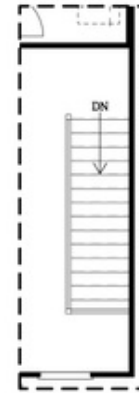
Opt Closet

First Floor Options

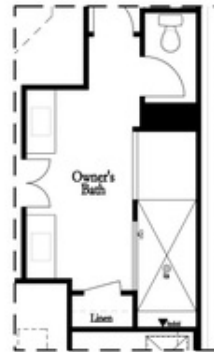
Options



Opt Left Side Window
@ Bedroom 3



Opt Open Rail



Opt Walk-Thru Shower



Opt Tub/Shower Combo

Second Floor Options

Want to Know More
About This Home?

CONTACT OUR COMMUNITY SALES MANAGER
Call Us @ 470.248.2097