



PRICED FROM
\$641,400

 **2,594 - 2,764 Sq Ft**

 **3 - 5 Beds**

 **2.5 - 3 Baths**

 **2 Car Garage**

 **2.0 Story**

- **Gourmet Kitchen with Island overlooking Dining and Family Room**
- **Owner's Suite and Private Bath with Dual Vanities and Over Size Walk-In Closet on Lower Level**
- **Secondary Bedrooms on Upper Level**
- **Two Car Garage**

[Read More Online](#)

Available Elevations



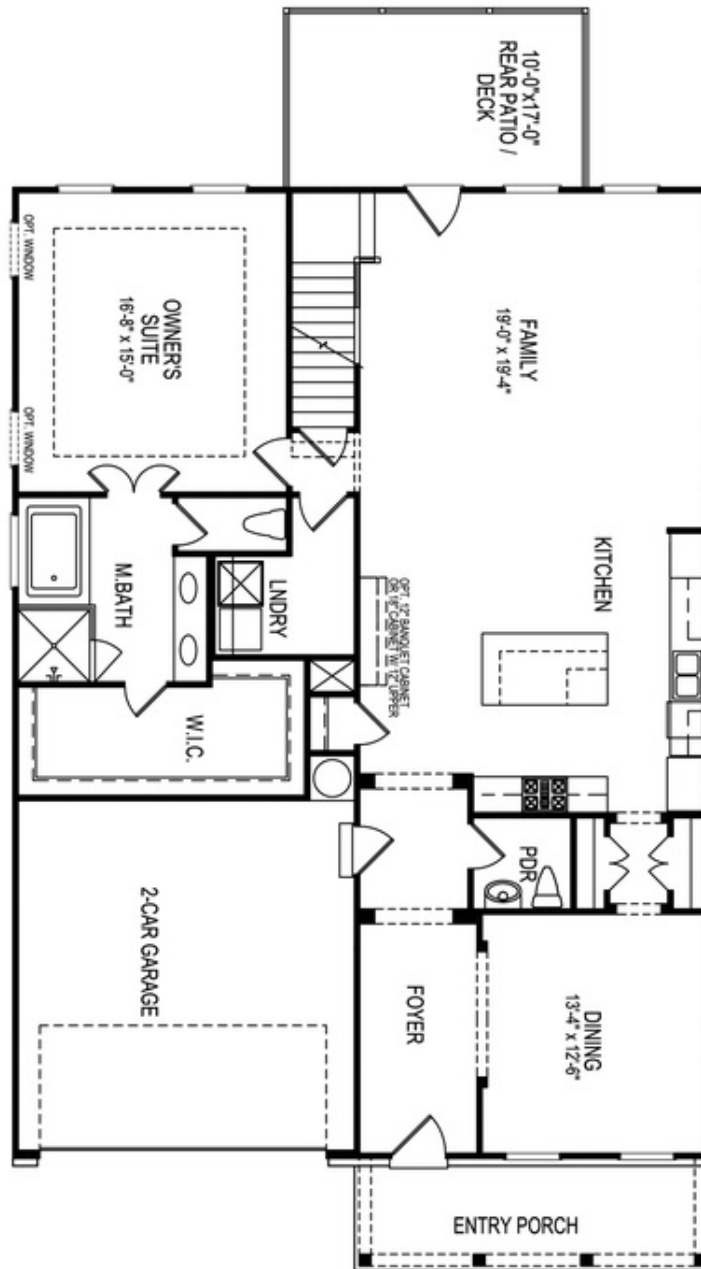
Elevation A



Elevation B

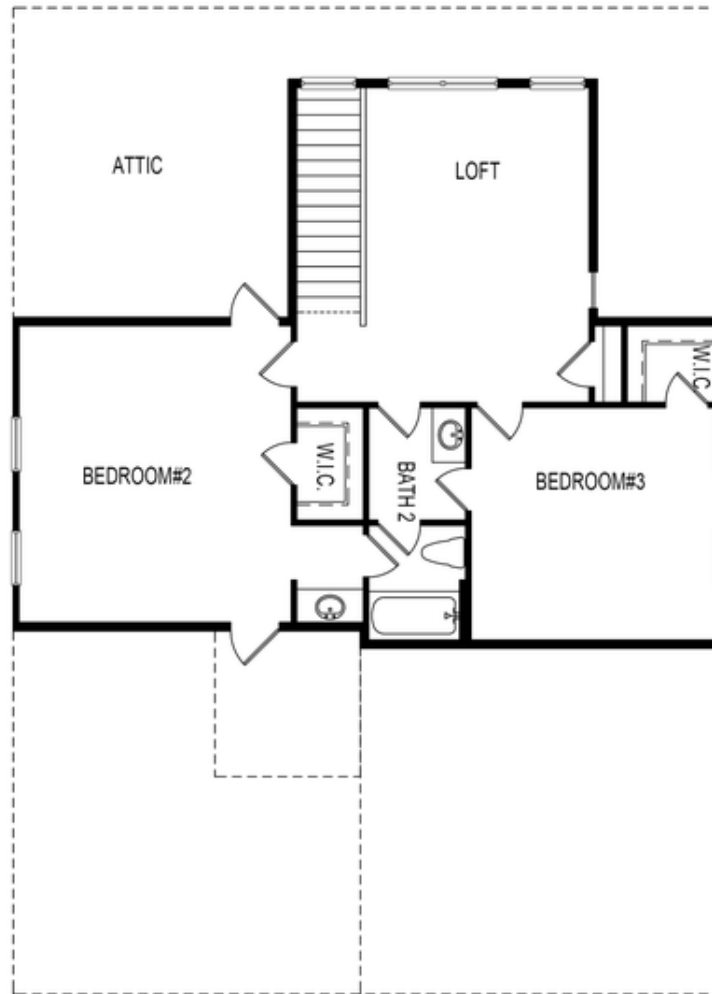


Elevation D



Want to Know More
About This Home?

CONTACT OUR COMMUNITY SALES MANAGER
Call Us @ 470.248.2097

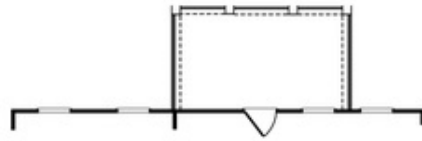


Second Floor

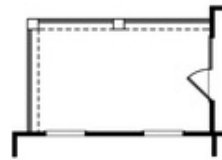
Want to Know More
About This Home?

CONTACT OUR COMMUNITY SALES MANAGER
Call Us @ 470.248.2097

Options



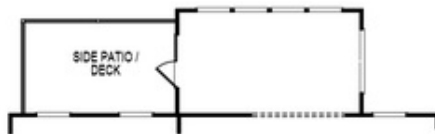
OPT Covered Patio/Deck



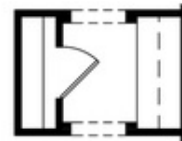
OPT Covered Side Patio/Deck



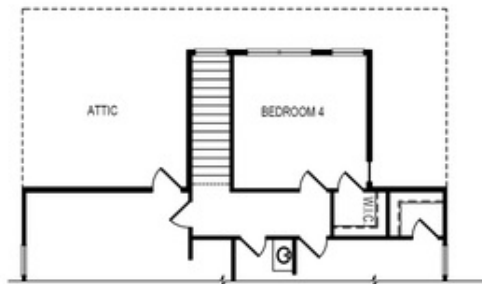
OPT Fireplace
 w. Opt Built-Ins



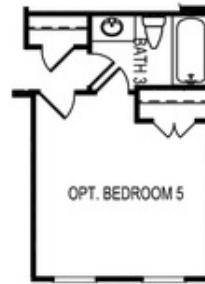
OPT Sunroom



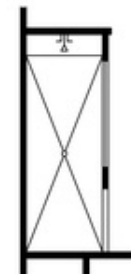
OPT Butler's Pantry



OPT Bedroom 4 ilo Loft



OPT Bedroom 5
 ilo Dining Room



OPT Owner's
 Walk-In Shower

Want to Know More
 About This Home?

CONTACT OUR COMMUNITY SALES MANAGER
 Call Us @ 470.248.2097