



PRICED FROM  
**\$738,400**

 **3,472 - 4,192 Sq Ft**

 **5 - 6 Beds**

 **4 - 5 Baths**

 **2 Car Garage**

 **2.0 Story**

- **Gourmet Kitchen with Island Overlooking Family Room and Breakfast Room**
- **Spacious Separate Dining Room**
- **Huge Owner's Retreat with Elegant Bath with Unique Dual Vanities and Large His and Her Walk-In Closets**
- **Secondary Bedrooms Feature Private or Shared Full Bath**

[Read More Online](#)

## Available Elevations



Elevation A



Elevation H

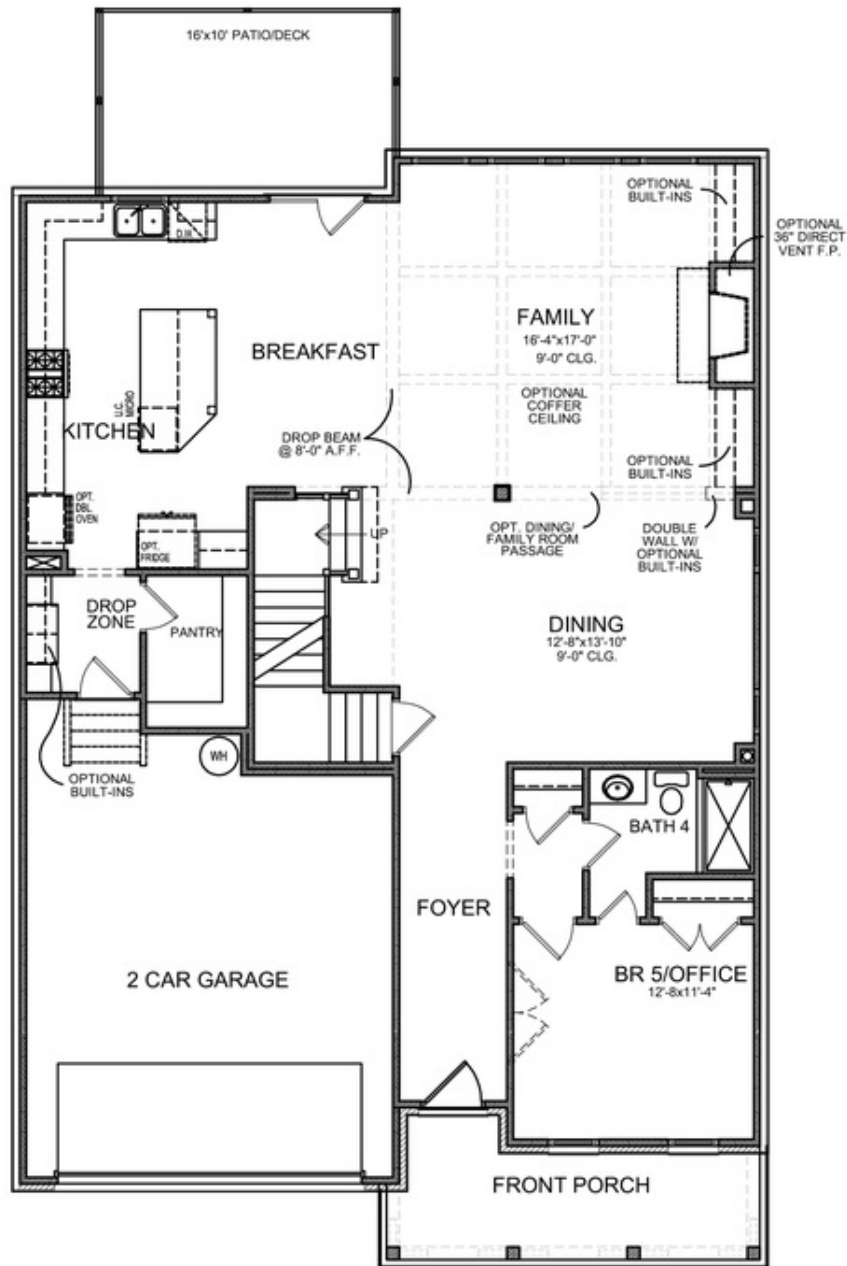


Elevation B



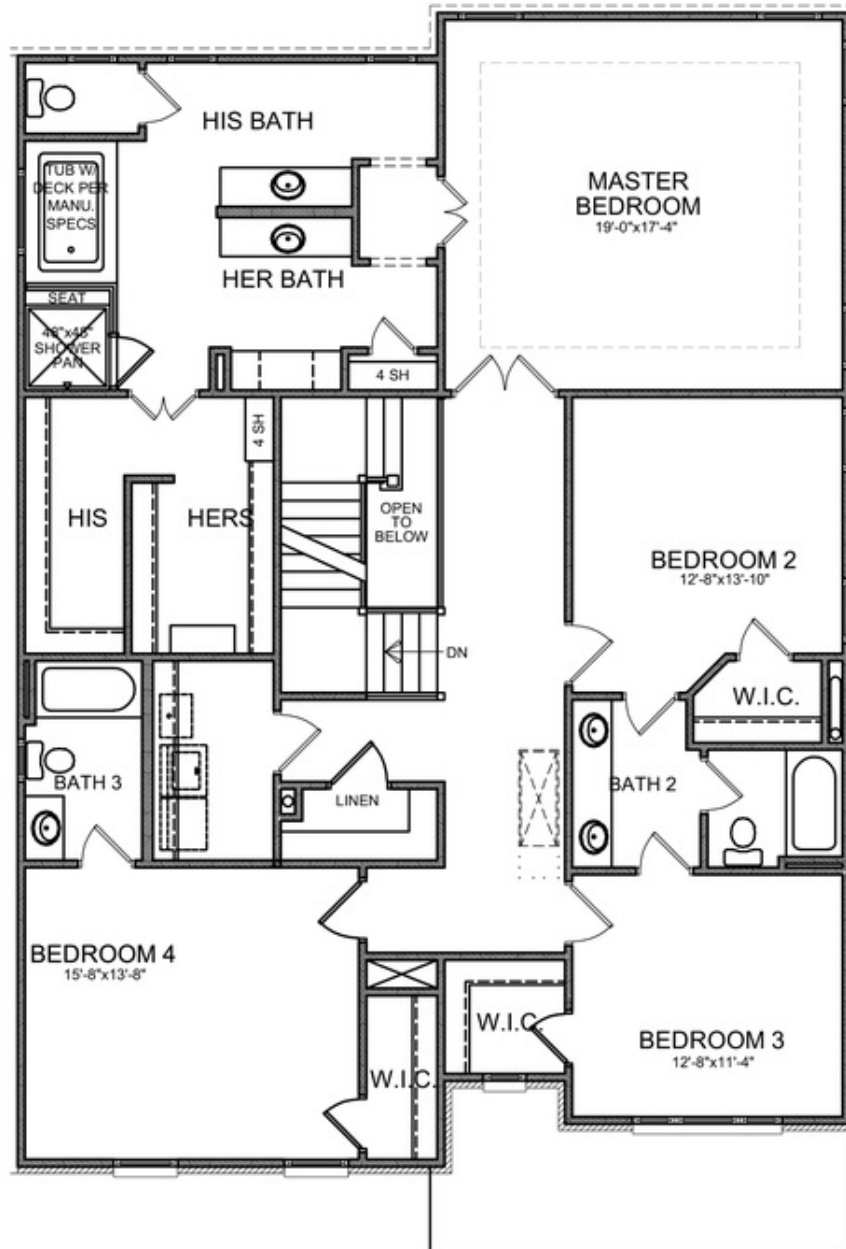
Elevation E

Please refer to actual blueprints for an accurate representation of home design. Home design and elevations subject to change without prior notice. Window, door and porch locations may vary by elevation. Subject to error, omission or withdrawal.



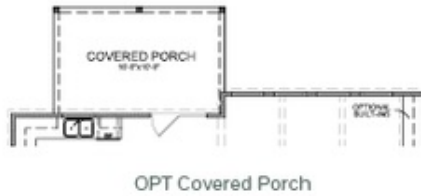
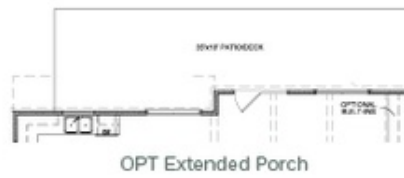
Want to Know More  
 About This Home?

CONTACT OUR COMMUNITY SALES MANAGER  
 Call Us @ 470.248.2097



Want to Know More  
About This Home?

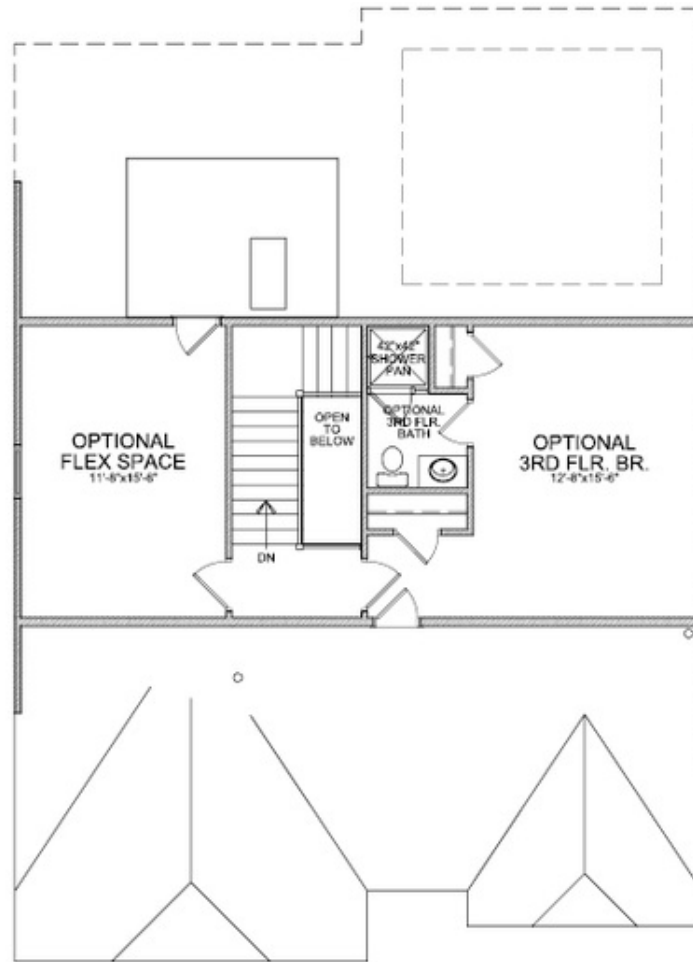
CONTACT OUR COMMUNITY SALES MANAGER  
Call Us @ 470.248.2097



OPTIONS

Want to Know More  
About This Home?

CONTACT OUR COMMUNITY SALES MANAGER  
Call Us @ 470.248.2097



OPT Third Floor

\*Third Floor NOT available on Elevations B & E

Want to Know More  
About This Home?

CONTACT OUR COMMUNITY SALES MANAGER  
Call Us @ 470.248.2097