








PRICED AT  
**\$522,890**

-  1994 Sq Ft
-  3 Beds
-  3.5 Baths
-  2 Car Garage
-  3.0 Story

Your Home, Your Way with \$35,000! Customize your home buying journey - use it towards low rates, upgrades, appliances, closing costs and more. Ends August 31, 2025 This Move in ready stunning three-story Glendale plan offers the perfect combination of style and functionality, with each bedroom featuring its own private bathroom! The designer-selected Stone Design Collection gives the home a modern and elegant touch, with sleek light gray cabinetry throughout. Your guests will be welcomed through the terrace-level entry foyer, leading to a private bedroom and full bath, ideal for visitors or a home office. The main level is the epitome of open-concept living, featuring a gourmet kitchen, a spacious island, stainless steel appliances, quartz countertops, and a stylish tile backsplash. The kitchen flows seamlessly into the dining & living area which features a modern Linear fireplace, creating a warm and inviting atmosphere perfect for relaxing or entertaining. This home has a Sunroom for extra living space for you to enjoy that leads out to the quaint deck!! On the upper level, you'll find a luxurious owner's suite with a large walk-in closet and a spa-like bathroom with dual vanities and upgraded highly desirable huge walk-in shower with drying ...

**Want to Know More  
About This Home?**

CONTACT OUR COMMUNITY SALES MANAGER  
Call Us @ 470.248.2097



TERRACE  
Elevations B & C Floor Plan Layout

Want to Know More  
About This Home?

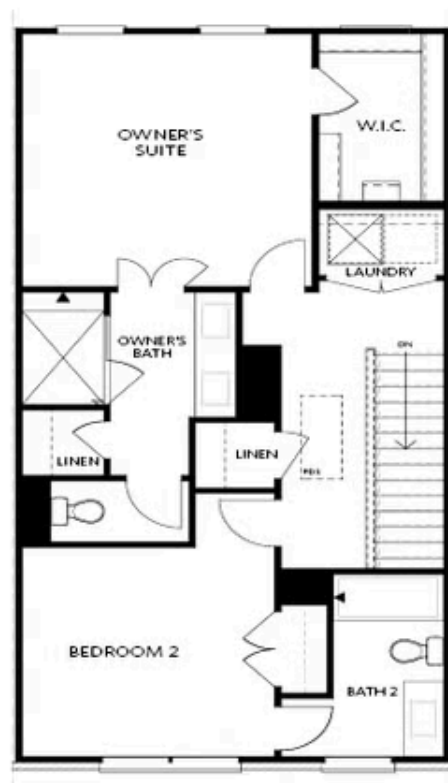
CONTACT OUR COMMUNITY SALES MANAGER  
Call Us @ 470.248.2097



Elevations B & C Floor Plan Layout

Want to Know More  
About This Home?

CONTACT OUR COMMUNITY SALES MANAGER  
Call Us @ 470.248.2097

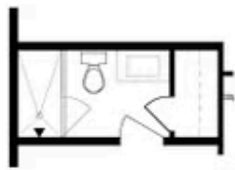


## SECOND FLOOR

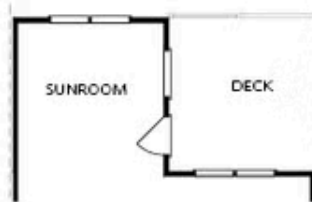
Elevations B & C Floor Plan Layout

Want to Know More  
About This Home?

CONTACT OUR COMMUNITY SALES MANAGER  
Call Us @ 470.248.2097



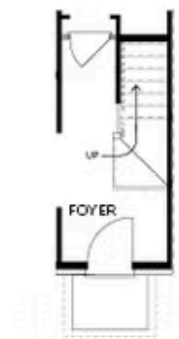
OPT Bath 3 Shower & Tub/Shower Combo



OPT Sunroom & Full Deck



OPT Owner's Walk-Through Shower



OPT Stair Landing on Terrace



OPT Fireplace



OPT Linear Fireplace



OPT Owner's Shower & Tub Combo

## OPTIONS

Want to Know More  
About This Home?

CONTACT OUR COMMUNITY SALES MANAGER  
Call Us @ 470.248.2097