



PRICED AT
\$464,550

 1752 Sq Ft

 3 Beds

 2.5 Baths

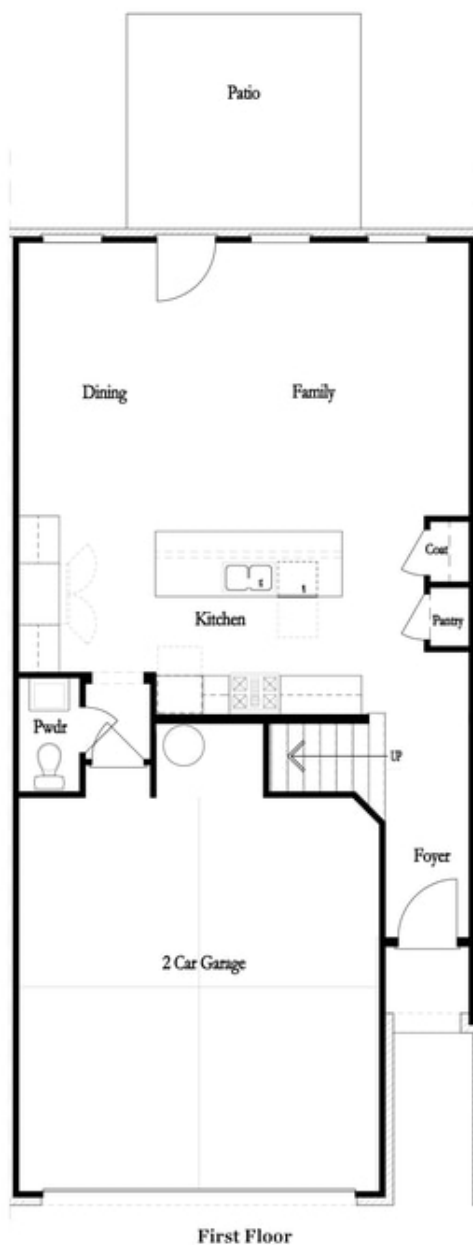
 2 Car Garage

 2.0 Story

NEW YEAR, NEW HOME, NEW YOU!!! END UNIT!!! Great location!!! \$5,000 towards closing cost when financing with one of Seller's preferred lenders. The Brittany by The Providence Group - is our spacious 2 story townhome floor plan. Foyer entry on the main level leads to a roomy open 1st floor featuring a designer kitchen, family room and dining area. The gourmet kitchen has Slate cabinets (same color as in the photos) quartz countertops, a tile backsplash and stainless appliances. A massive island has plenty of space for dinner prep and also large enough for 3-4 barstools for a more casual eat in area. Beyond the kitchen, you will find an open concept family room with a fireplace to enjoy and Exit the back door to find a quaint, fenced backyard with a covered patio. On the 2nd floor, you will enter a spacious owner's suite with a huge walk-in closet and owners bath that offers a tiled Shower and a separate tub to soak in along with dual vanities with quartz countertops. The laundry room is conveniently located in the hallway on the upper level along with 2 secondary bedrooms and shared bath. This community is in a highly desirable ...

**Want to Know More
About This Home?**

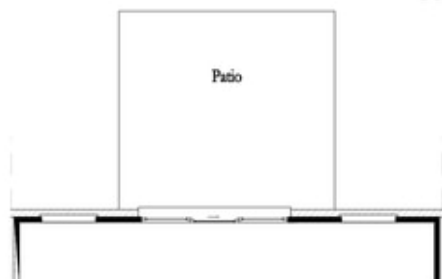
CONTACT OUR COMMUNITY SALES MANAGER
Call Us @ 470-248-2097



Want to Know More
About This Home?

CONTACT OUR COMMUNITY SALES MANAGER
Call Us @ 470-248-2097

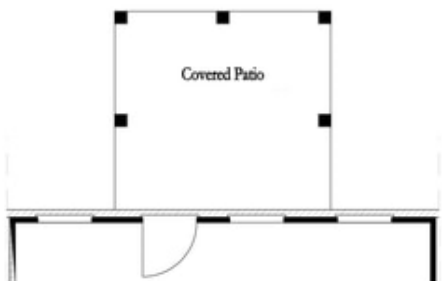
First Floor Options



8' Slider Door



Screened Patio



Covered Patio



Fireplace



Linear Fireplace

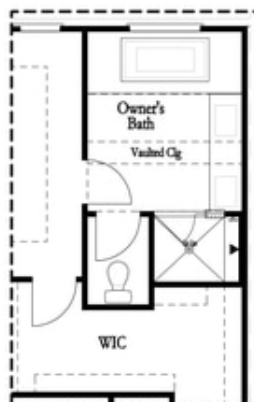
Want to Know More
About This Home?

CONTACT OUR COMMUNITY SALES MANAGER
Call Us @ 470-248-2097

Second Floor Options

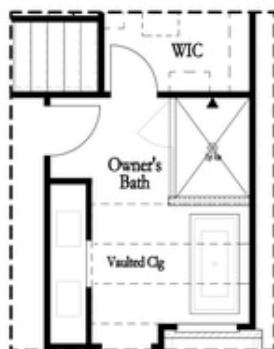


Shower with Freestanding Tub Combo

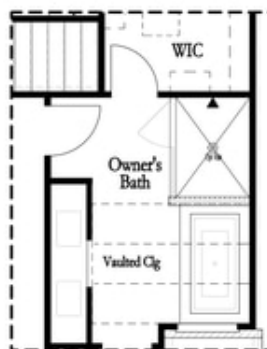


Shower with Decked Tub Combo

Owner's Rear Options



Shower with Freestanding Tub Combo



Shower with Decked Tub Combo

Owner's Front Options

Want to Know More
About This Home?

CONTACT OUR COMMUNITY SALES MANAGER
Call Us @ 470-248-2097