



PRICED AT
\$480,920

 1752 Sq Ft

 3 Beds

 2.5 Baths

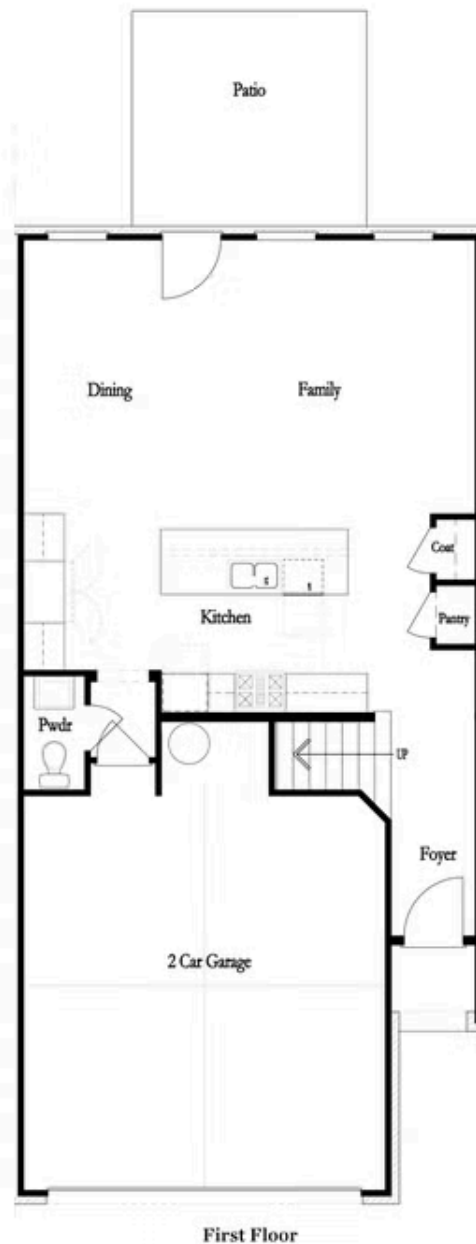
 2 Car Garage

 2.0 Story

Spring into a New Home with the FINAL REMAINING Brittany Floor Plan END UNIT by The Providence Group! Two story townhome, Lot #273 - End unit, offers an easy entrance on the main level for both your guests and you with front entry garage, Very convenient for those groceries. Private front entrance/foyer on main level with hard surface light colored floors leads you into an open concept with family room, kitchen, and dining. Family room features a fireplace and an 8 ft. sliding door that leads out to a covered patio and fenced backyard. Love the covered patio for rainy days, snowy days, or its too bright out days. Watch your pets, friends and family enjoy the fenced in backyard while grilling out or sipping on coffee all from outside or inside the home. Gourmet kitchen has vanilla color perimeter cabinets with caramel colored island cabinets - very on trend, and quartz countertops with large island - perfect for seating several people - Warm Wheat Design collection. When heading up to the second floor you, the owners bedroom is in the rear, as you enter your owners bedroom, you will find a nice sized closet for all the clothes, shoes, ...

**Want to Know More
About This Home?**

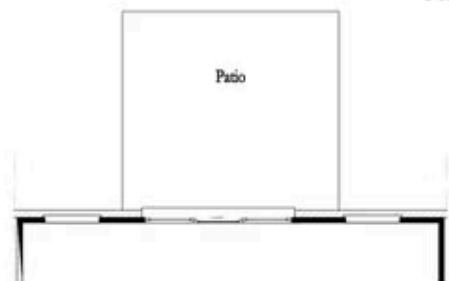
CONTACT OUR COMMUNITY SALES MANAGER
Call Us @ 470.248.2097



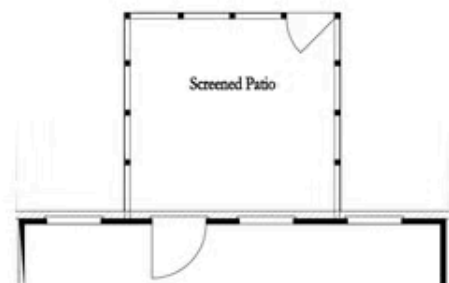
Want to Know More
About This Home?

CONTACT OUR COMMUNITY SALES MANAGER
Call Us @ 470.248.2097

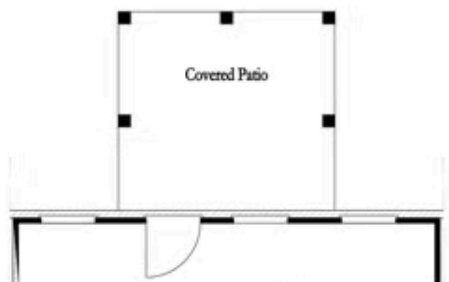
First Floor Options



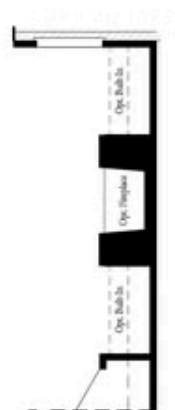
8' Slider Door



Screened Patio



Covered Patio



Fireplace

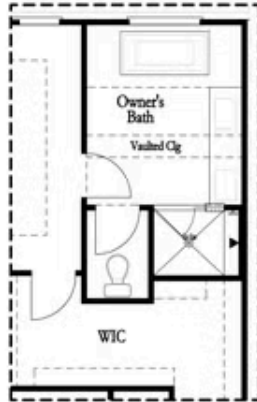


Linear Fireplace

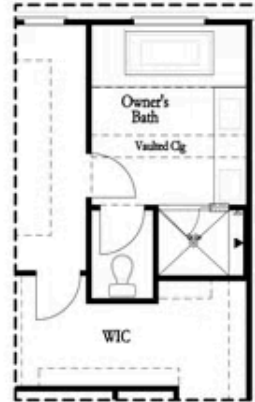
Want to Know More
About This Home?

CONTACT OUR COMMUNITY SALES MANAGER
Call Us @ 470.248.2097

Second Floor Options



Shower with Freestanding Tub Combo

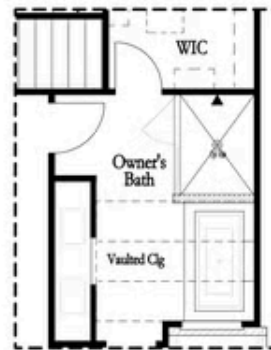


Shower with Decked Tub Combo

Owner's Rear Options



Shower with Freestanding Tub Combo



Shower with Decked Tub Combo

Owner's Front Options

Want to Know More
About This Home?

CONTACT OUR COMMUNITY SALES MANAGER
Call Us @ 470.248.2097