



PRICED AT
\$597,300

 2010 Sq Ft

 3 Beds

 2.5 Baths

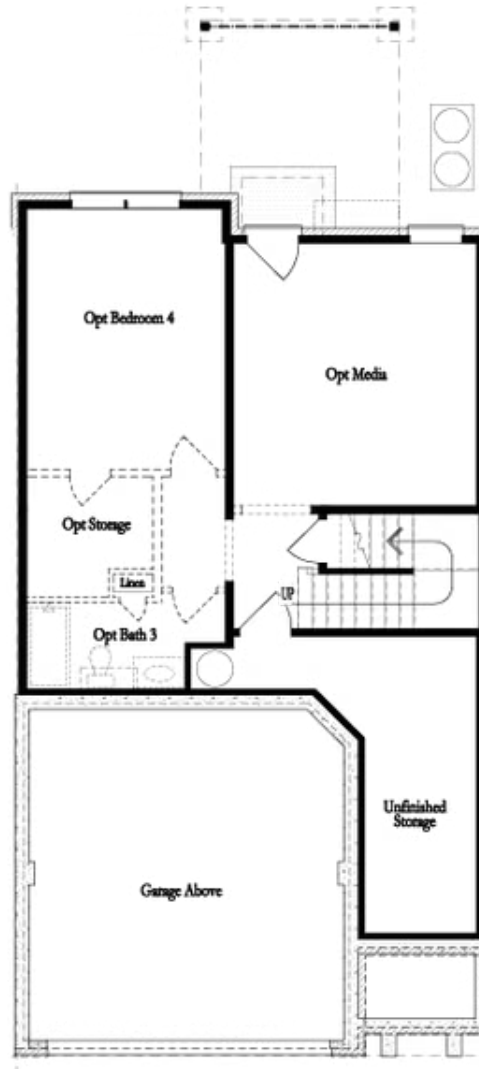
 2 Car Garage

 2.0 Story

Elevate your savings with \$20,000 Promotion. Already Applied to the Purchase Price but can be used towards CC, options, buydown etc! \$20,000 Promotion on contracts written in March. Plus, an additional \$10,000 in closing costs with one of our Preferred Lenders. Hurry Ends Soon.. Discover the The Stockton floor plan by The Providence Group. Move in Ready Home on Unfinished Basement - lots of options here! Enter in to this beautiful home with 9ft. ceilings on first and second floors. Entry/foyer offers a space for drop zone to put shoes, keys, hats, umbrellas, etc. As you come in, you will find a coat closet and powder room. The kitchen on the main floor offers open concept living at its best, huge kitchen island - quartz countertop, single bowl SS sink, garbage disposal, backsplash/tile to the ceiling behind the hood, 42" upper white kitchen cabinets - with Gold hardware as an upgrade - soft close doors and drawers in the kitchen, built in microwave for a sleek/clean look. Seating in the dining area for at least a table of six or more. Family room furniture can be configured many different ways while enjoying the scenic view out of the sliding glass ...

**Want to Know More
About This Home?**

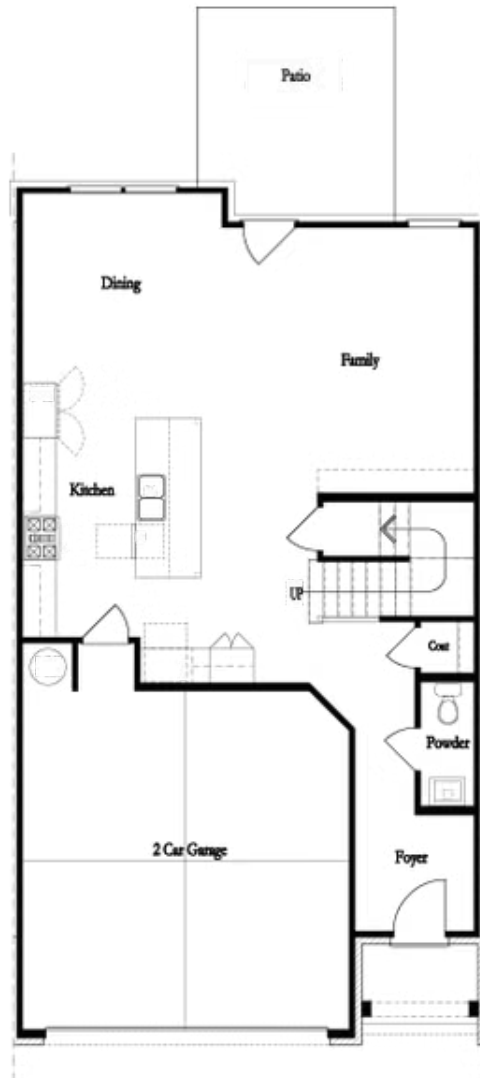
CONTACT OUR COMMUNITY SALES MANAGER
Call Us @ 470.248.2097



Unfinished Basement

**Want to Know More
About This Home?**

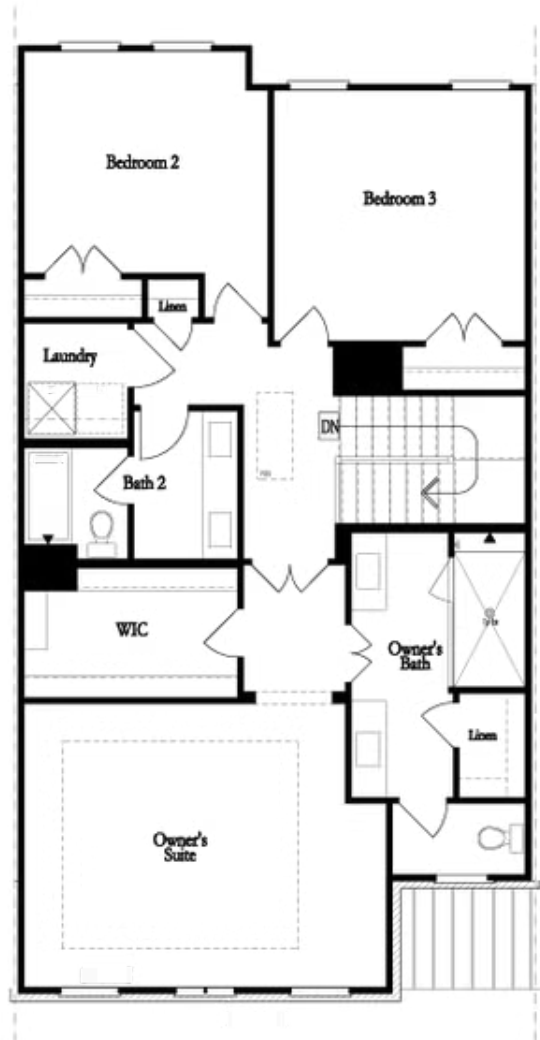
CONTACT OUR COMMUNITY SALES MANAGER
Call Us @ 470.248.2097



First Floor

**Want to Know More
About This Home?**

CONTACT OUR COMMUNITY SALES MANAGER
Call Us @ 470.248.2097

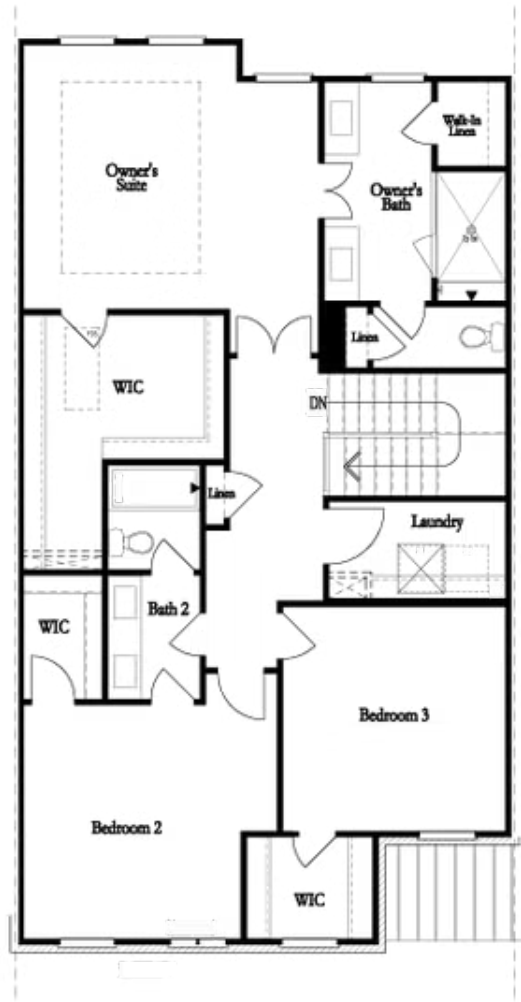


Second Floor
(Owner's Front)

Elevations G, H, JI, J3 & L

Want to Know More
About This Home?

CONTACT OUR COMMUNITY SALES MANAGER
Call Us @ 470.248.2097

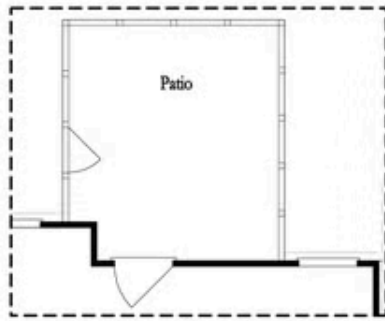


Second Floor
(Owner's Rear)

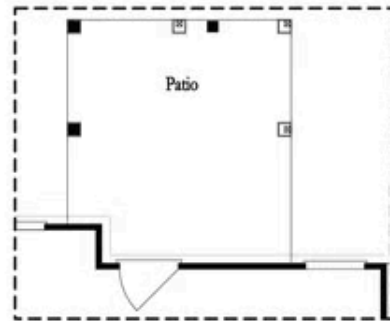
Elevations G, H, JI, J3 & L

Want to Know More
About This Home?

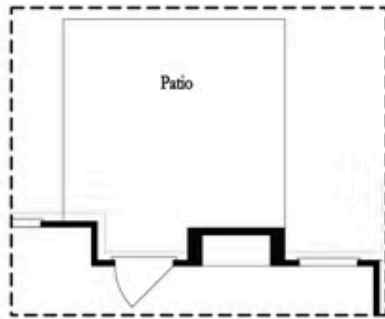
CONTACT OUR COMMUNITY SALES MANAGER
Call Us @ 470.248.2097



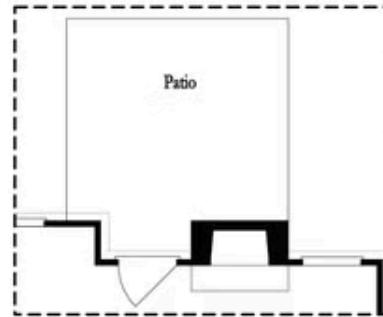
Opt. Screened Patio



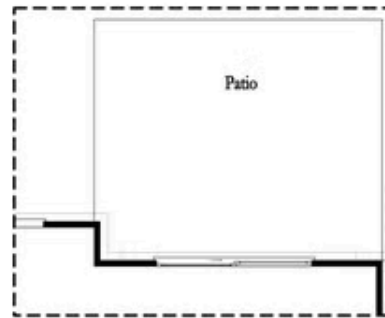
Opt. Coverd Patio



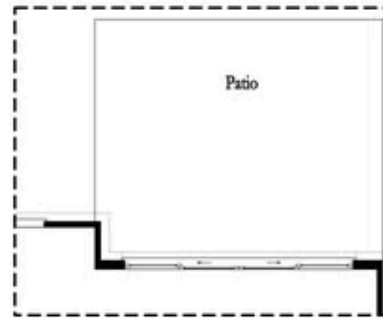
Opt. Linear Fireplace



Opt. Fireplace



Opt. 8 Foot Slider Door

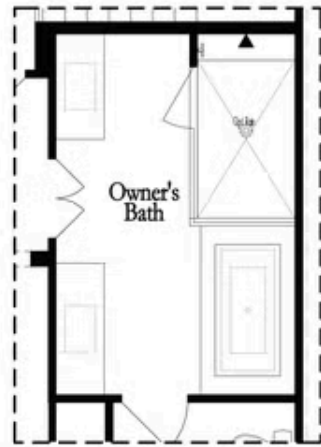


Opt. 12 Foot Slider Door

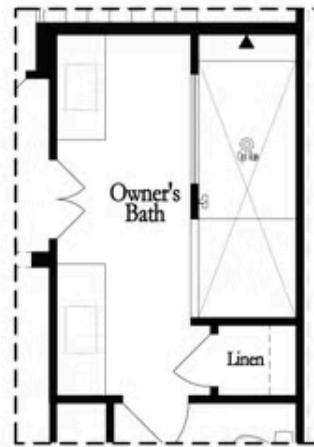
Main Level Options

Want to Know More
 About This Home?

CONTACT OUR COMMUNITY SALES MANAGER
 Call Us @ 470.248.2097

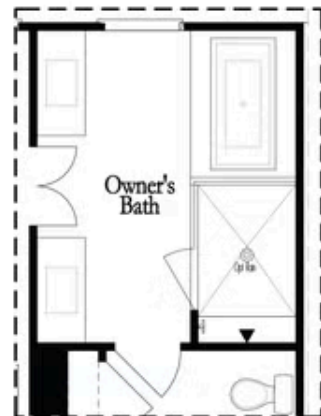


Opt. Shower/Tub



Opt. Walk-Through Shower

Owner's Front - Options



Opt. Shower/Tub



Opt. Walk-Through Shower

Owner's Rear - Options

Want to Know More
 About This Home?

CONTACT OUR COMMUNITY SALES MANAGER
 Call Us @ 470.248.2097