



PRICED AT
\$611,600

 2010 Sq Ft

 3 Beds

 2.5 Baths

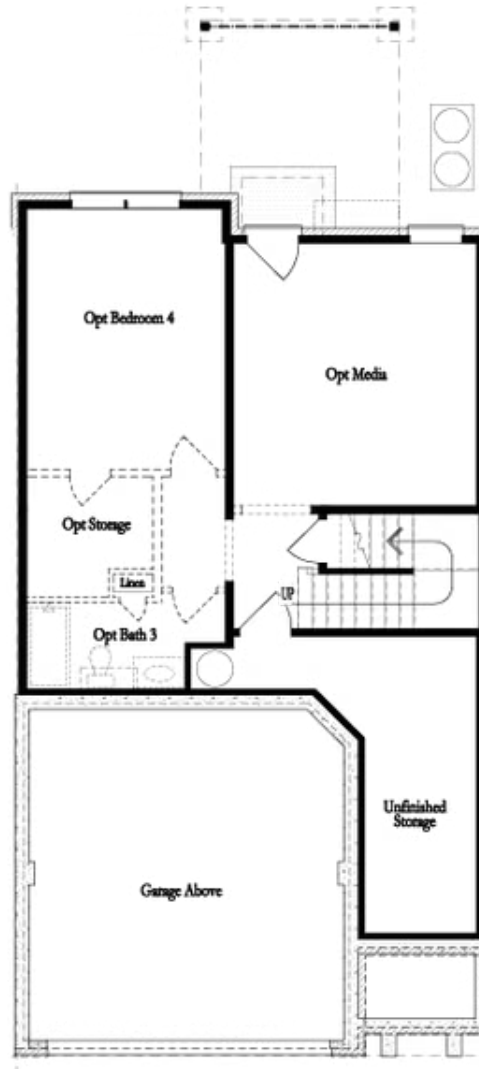
 2 Car Garage

 2.0 Story

Discover the The Stockton on unfinished basement by The Providence Group. Available for move-in NOW! Welcome to the Popular Stockton floorplan - Fabulous Two story Townhome on UNFINISHED BASEMENT with covered porch and fenced backyard!!!! Homesite 150 offers an easy entry on the main level with a front entry garage. This home is Owner's Rear configuration and has our Cool Linen Upgraded 2.0 design package. A Private foyer on the main level with hard surface floors leads you to a Gourmet Kitchen with an oversized island and quartz countertops. The dining & family room connect seamlessly and the family room has tons of natural light leading onto your covered porch for entertaining and relaxing. Enjoy the fireplace for the Holidays!! When you head to the 2nd floor you will enter a spacious owner's suite that offers dual vanities with quartz countertops, a huge Frameless Shower and extra linen closet space. The laundry room is located in the hallway on the upper level along with 2 secondary bedrooms and shared bath. The unfinished basement has endless possibilities - media room, fitness space, game room or simply storage.. you decide! This community is in highly desirable location in unincorporated Gwinnett County and ...

**Want to Know More
About This Home?**

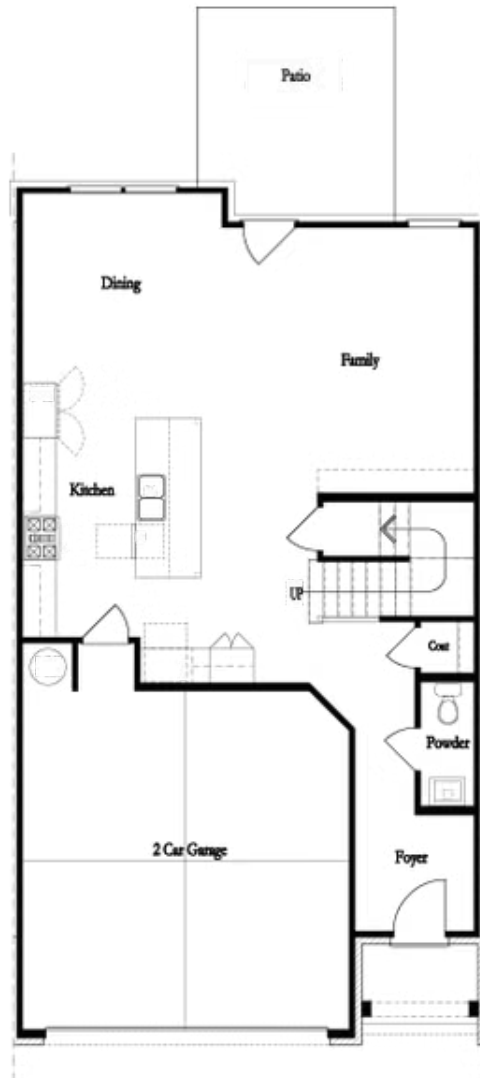
CONTACT OUR COMMUNITY SALES MANAGER
Call Us @ 470.248.2097



Unfinished Basement

**Want to Know More
About This Home?**

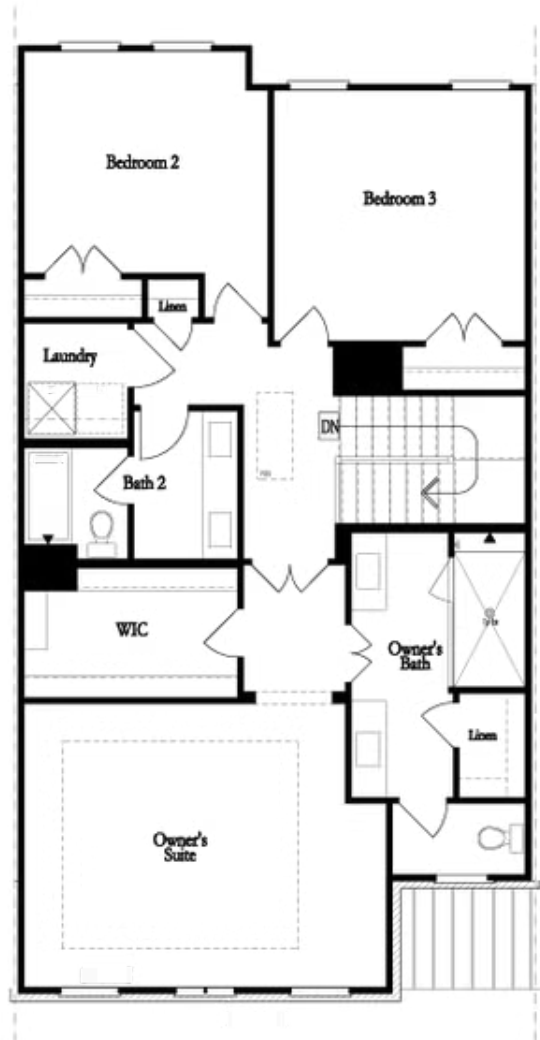
CONTACT OUR COMMUNITY SALES MANAGER
Call Us @ 470.248.2097



First Floor

**Want to Know More
About This Home?**

CONTACT OUR COMMUNITY SALES MANAGER
Call Us @ 470.248.2097

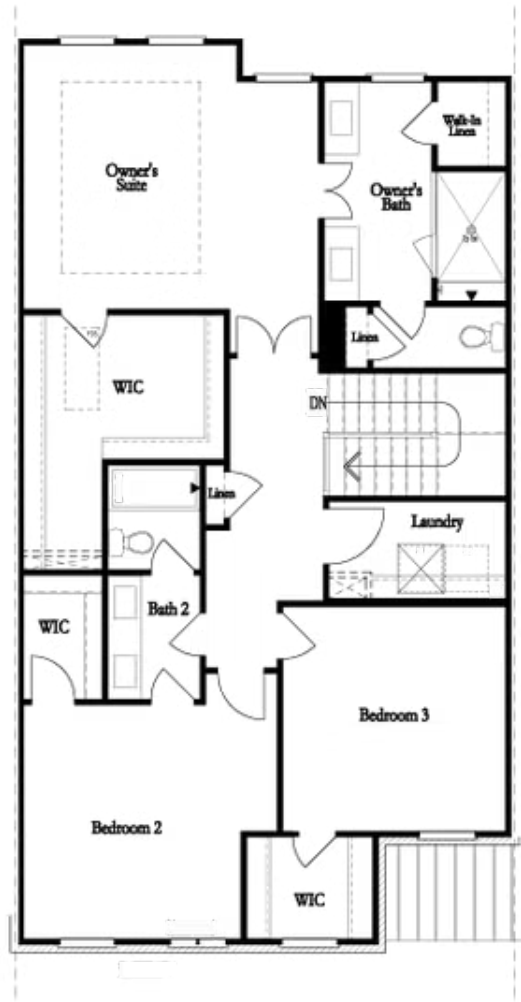


Second Floor
(Owner's Front)

Elevations G, H, JI, J3 & L

Want to Know More
About This Home?

CONTACT OUR COMMUNITY SALES MANAGER
Call Us @ 470.248.2097

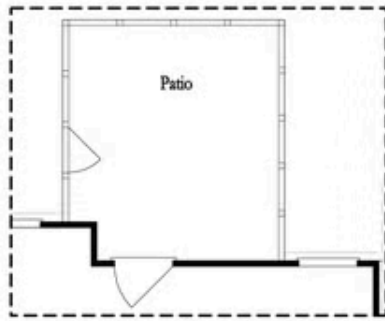


Second Floor
(Owner's Rear)

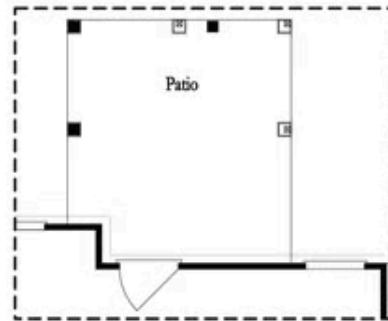
Elevations G, H, JI, J3 & L

Want to Know More
About This Home?

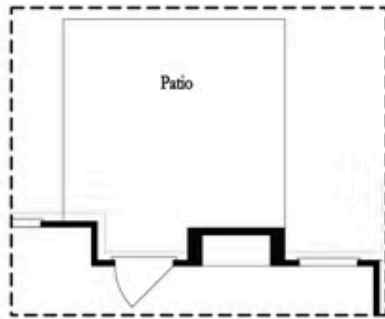
CONTACT OUR COMMUNITY SALES MANAGER
Call Us @ 470.248.2097



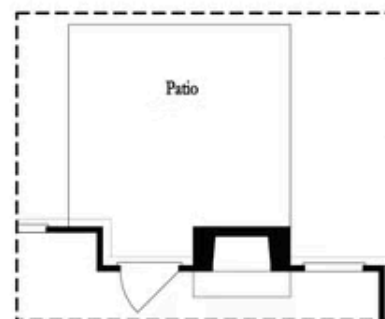
Opt. Screened Patio



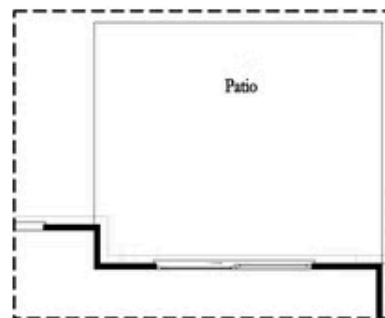
Opt. Coverd Patio



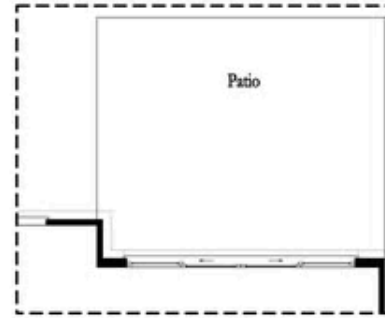
Opt. Linear Fireplace



Opt. Fireplace



Opt. 8 Foot Slider Door

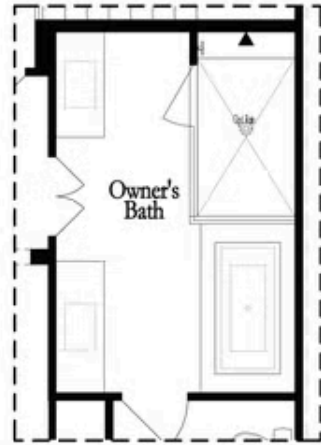


Opt. 12 Foot Slider Door

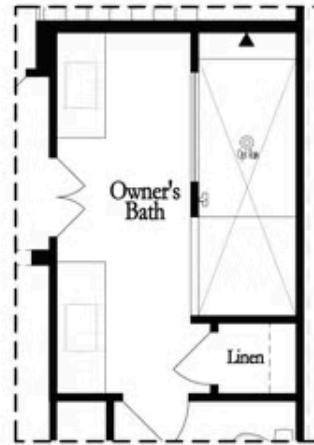
Main Level Options

Want to Know More
About This Home?

CONTACT OUR COMMUNITY SALES MANAGER
Call Us @ 470.248.2097

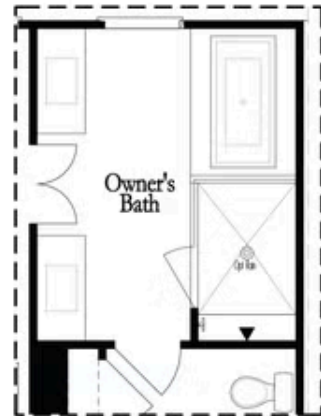


Opt. Shower/Tub



Opt. Walk-Through Shower

Owner's Front - Options



Opt. Shower/Tub



Opt. Walk-Through Shower

Owner's Rear - Options

Want to Know More
 About This Home?

CONTACT OUR COMMUNITY SALES MANAGER
 Call Us @ 470.248.2097