



PRICED AT  
**\$567,800**

 2030 Sq Ft

 3 Beds

 2.5 Baths

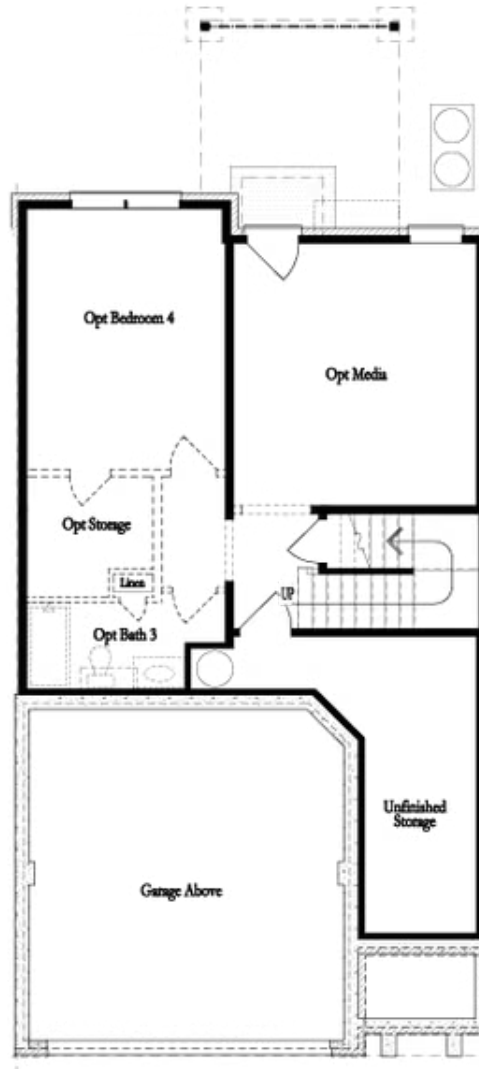
 2 Car Garage

 2.0 Story

Spring is in the Air and so is Your New Home Here at Millcroft! Discover the The Stockton floor plan by The Providence Group. Currently Under Construction and due to be completed in August/September 2026- This home is in a highly desirable location within the community with lots of trees in the back for privacy. As you enjoy the spring weather, soon to be summer, you will be able to sit on your covered patio and watch the trees sway or pets play in the fenced in backyard. As you enter into this beautiful two story townhome you will have 9ft. ceilings on first and second floors - Entry/foyer offers a space for a place to put shoes, keys, hats, umbrellas, etc. There is also a coat closet and powder room right there as you come in for guests. The kitchen on the main floor will offer open concept living at its best, huge kitchen island - quartz, single bowl SS sink, garbage disposal, backsplash/tile to the ceiling behind the hood, 42" upper kitchen cabinets - lots of cabinets - light gray with black hardware as an upgrade - soft close doors and drawers in the kitchen, built in microwave ...

**Want to Know More  
About This Home?**

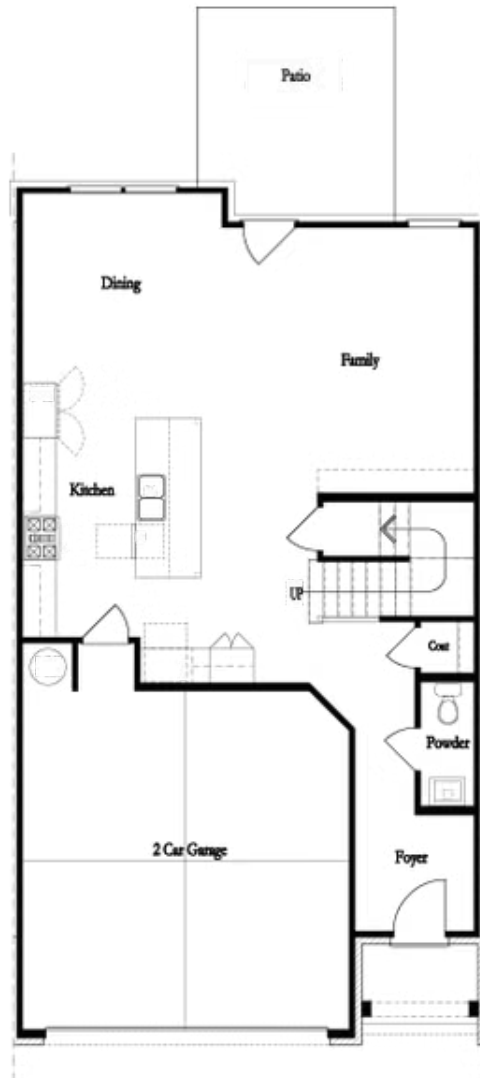
CONTACT OUR COMMUNITY SALES MANAGER  
Call Us @ 470.248.2097



**Unfinished Basement**

**Want to Know More  
About This Home?**

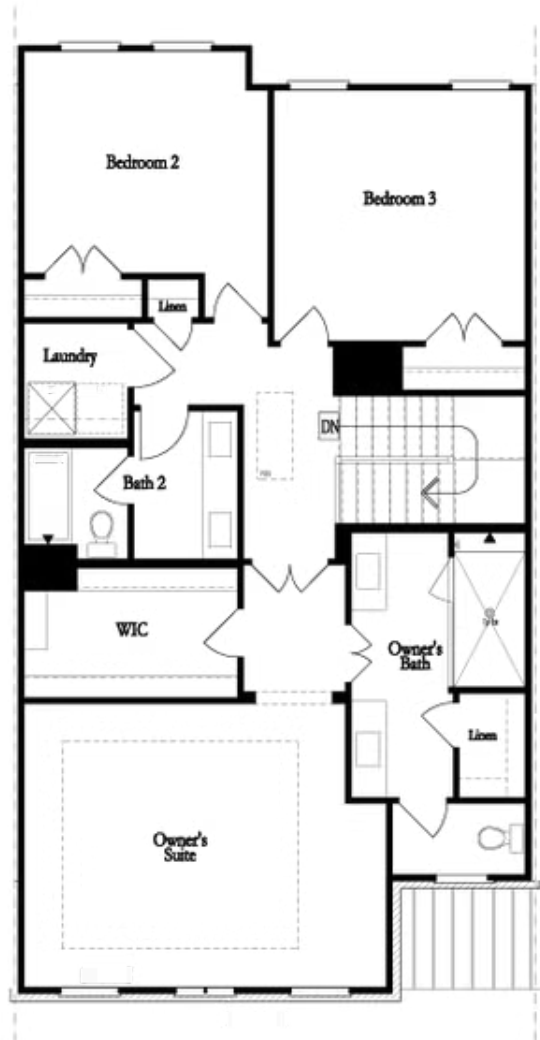
CONTACT OUR COMMUNITY SALES MANAGER  
Call Us @ 470.248.2097



**First Floor**

**Want to Know More  
About This Home?**

CONTACT OUR COMMUNITY SALES MANAGER  
Call Us @ 470.248.2097

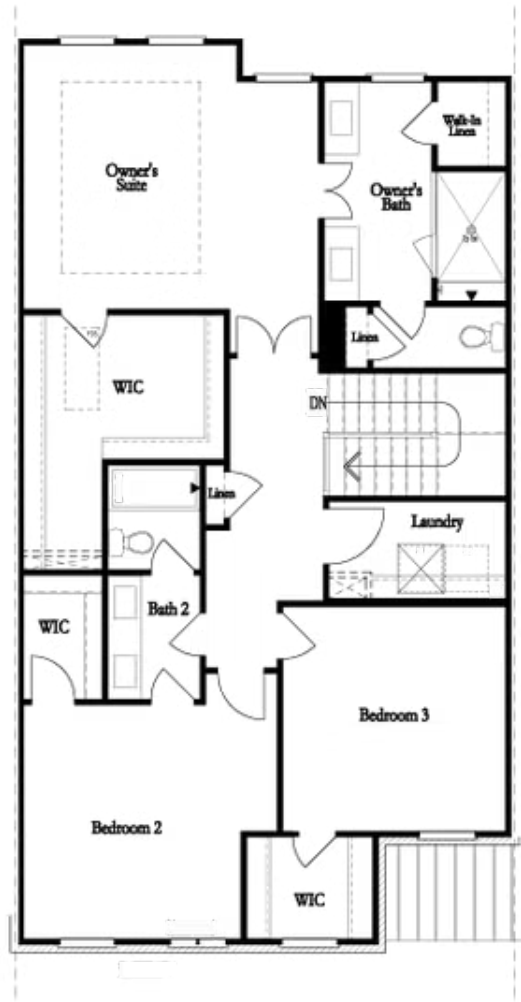


**Second Floor**  
**(Owner's Front)**

**Elevations G, H, JI, J3 & L**

**Want to Know More  
About This Home?**

CONTACT OUR COMMUNITY SALES MANAGER  
Call Us @ 470.248.2097

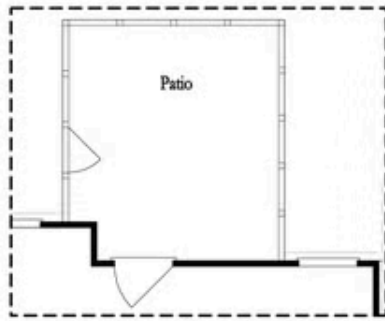


Second Floor  
(Owner's Rear)

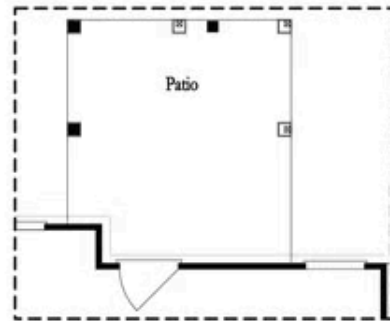
Elevations G, H, JI, J3 & L

Want to Know More  
About This Home?

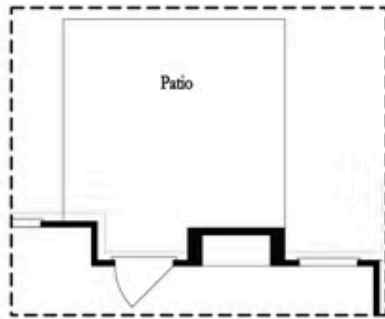
CONTACT OUR COMMUNITY SALES MANAGER  
Call Us @ 470.248.2097



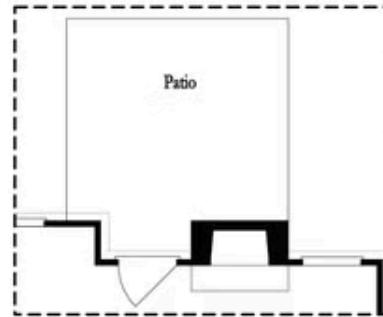
Opt. Screened Patio



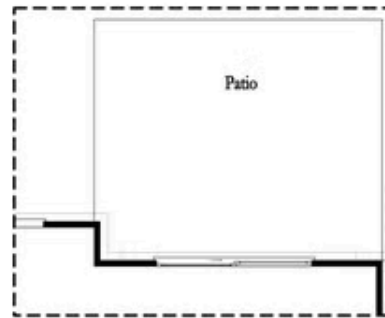
Opt. Coverd Patio



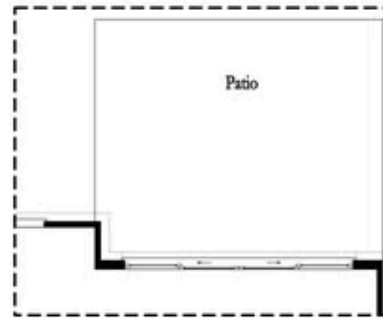
Opt. Linear Fireplace



Opt. Fireplace



Opt. 8 Foot Slider Door

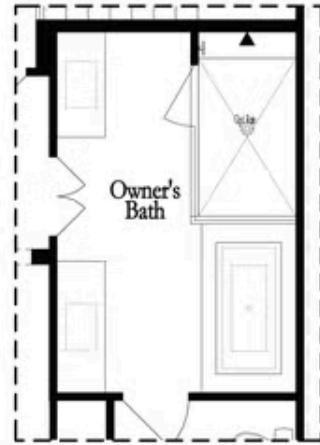


Opt. 12 Foot Slider Door

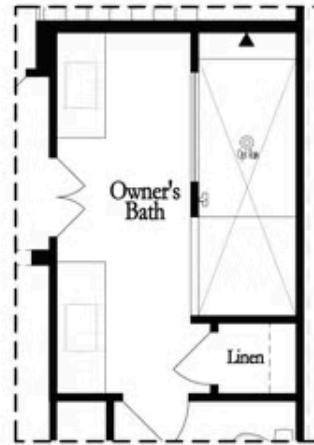
Main Level Options

Want to Know More  
 About This Home?

CONTACT OUR COMMUNITY SALES MANAGER  
 Call Us @ 470.248.2097

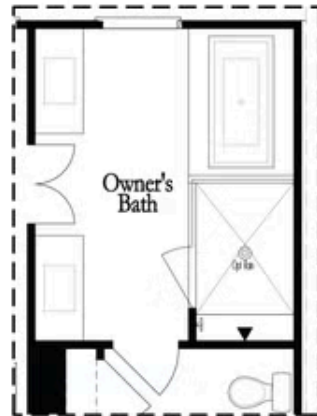


Opt. Shower/Tub



Opt. Walk-Through Shower

Owner's Front - Options



Opt. Shower/Tub



Opt. Walk-Through Shower

Owner's Rear - Options

Want to Know More  
About This Home?

CONTACT OUR COMMUNITY SALES MANAGER  
Call Us @ 470.248.2097