



PRICED AT
\$567,800

 2030 Sq Ft

 3 Beds

 2.5 Baths

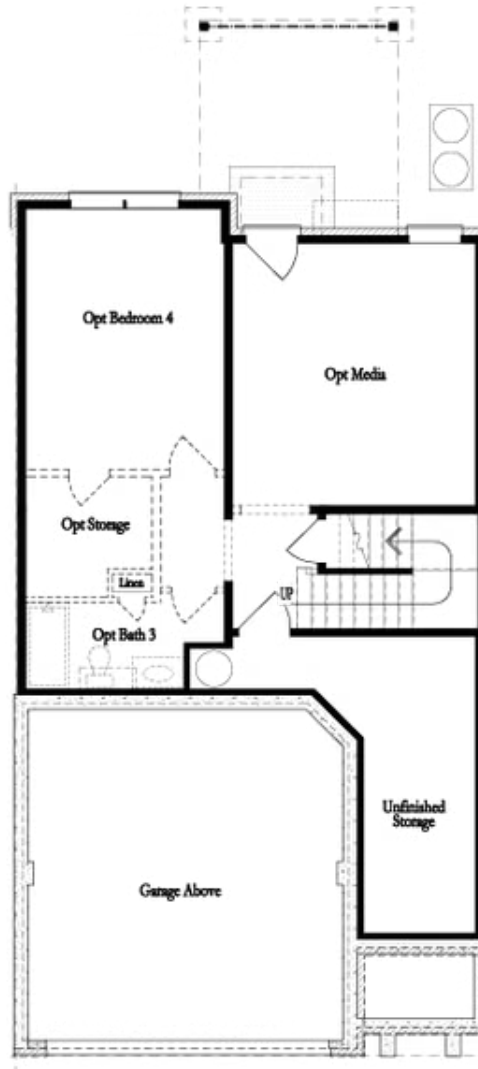
 2 Car Garage

 2.0 Story

Spring is in the air, and so is your opportunity to own a beautiful new home at Millcroft! Introducing The Stockton floor plan by The Providence Group, currently under construction with an anticipated completion of August/September 2026. Ideally situated within the community, this desirable interior homesite backs to a wooded area, providing a peaceful and private backdrop to enjoy from your covered patio and fenced backyard. Step inside this thoughtfully designed two-story townhome featuring 9-foot ceilings on both levels and a welcoming foyer complete with a convenient coat closet and nearby powder room for guests. The open-concept main floor is designed for both everyday living and effortless entertaining. The stunning kitchen showcases a large quartz island, single-bowl stainless steel sink, garbage disposal, built-in microwave, tile backsplash extending to the ceiling behind the vent hood, and an abundance of upgraded 42-inch light gray cabinets with black hardware and soft-close doors and drawers. The spacious dining area comfortably accommodates a table for six, while the flexible family room offers endless furniture arrangement possibilities. Natural light pours through the impressive 8-foot sliding glass door leading to the covered patio and private fenced yard. Additional main-level highlights include elegant crown molding and the convenience ...

**Want to Know More
About This Home?**

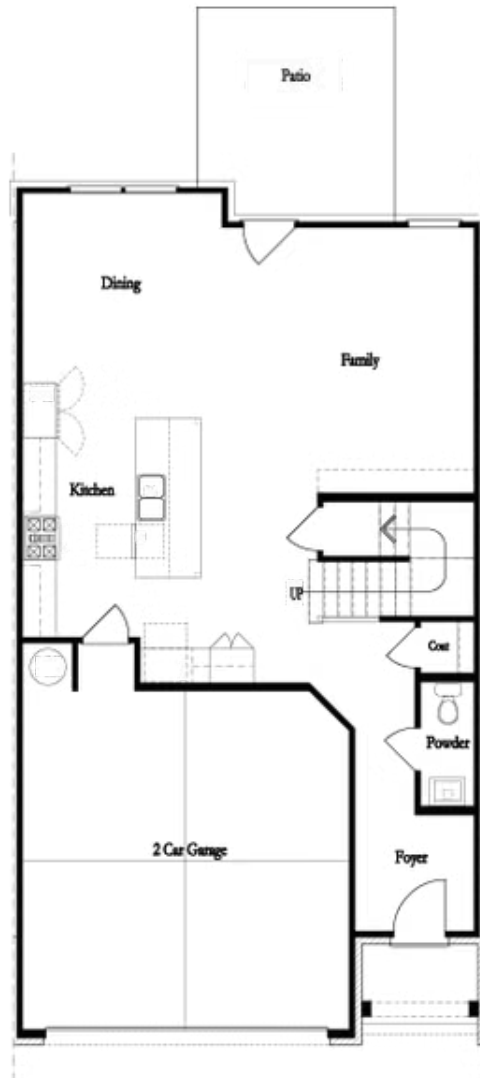
CONTACT OUR COMMUNITY SALES MANAGER
Call Us @ 470.248.2097



Unfinished Basement

**Want to Know More
About This Home?**

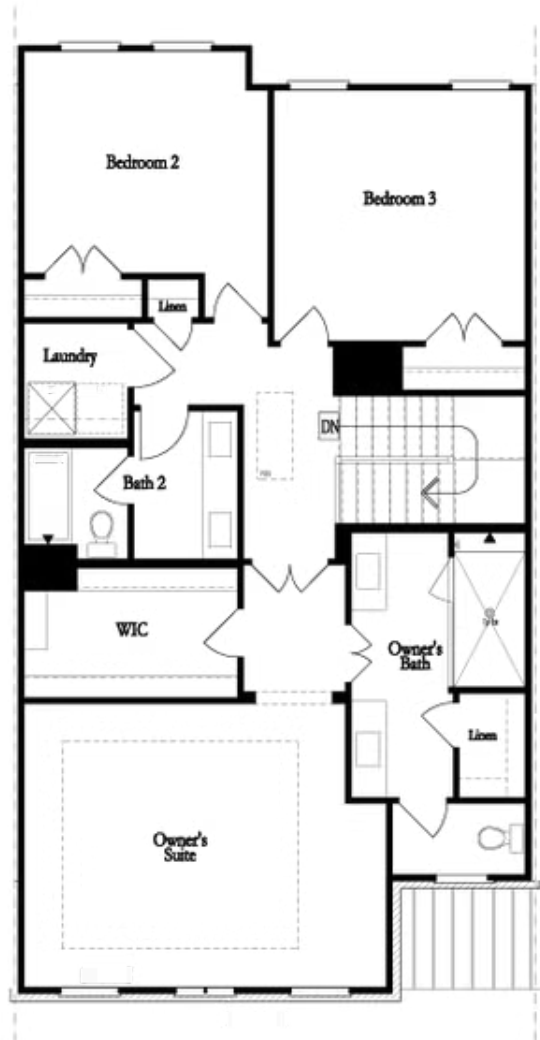
CONTACT OUR COMMUNITY SALES MANAGER
Call Us @ 470.248.2097



First Floor

**Want to Know More
About This Home?**

CONTACT OUR COMMUNITY SALES MANAGER
Call Us @ 470.248.2097

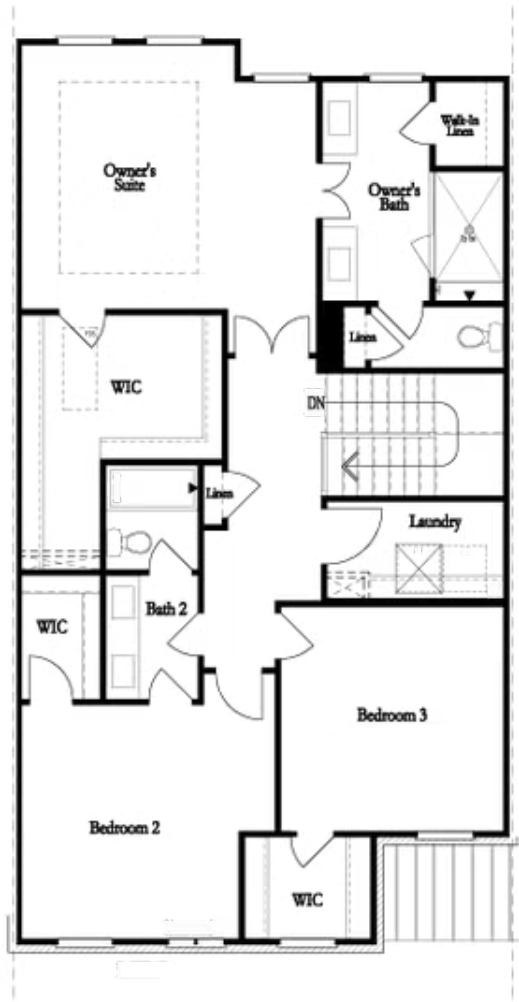


**Second Floor
(Owner's Front)**

Elevations G, H, JI, J3 & L

**Want to Know More
About This Home?**

CONTACT OUR COMMUNITY SALES MANAGER
Call Us @ 470.248.2097

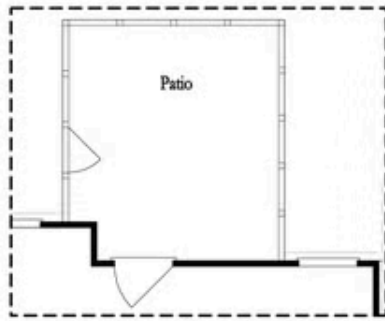


Second Floor
(Owner's Rear)

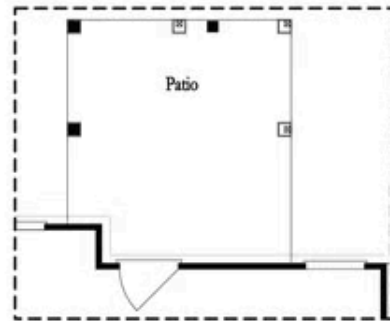
Elevations G, H, JI, J3 & L

Want to Know More
About This Home?

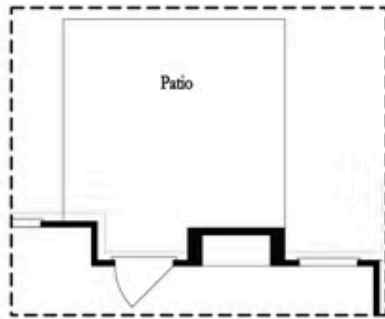
CONTACT OUR COMMUNITY SALES MANAGER
Call Us @ 470.248.2097



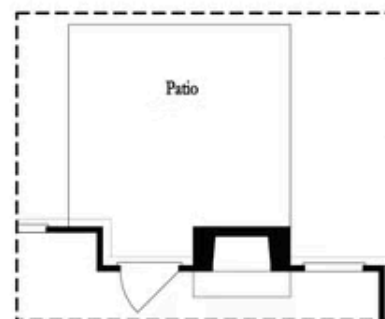
Opt. Screened Patio



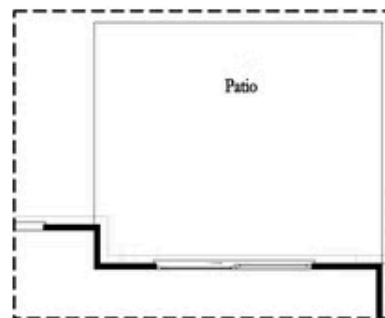
Opt. Coverd Patio



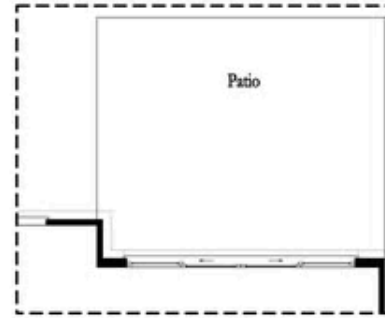
Opt. Linear Fireplace



Opt. Fireplace



Opt. 8 Foot Slider Door

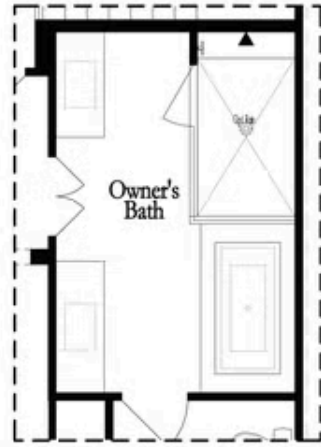


Opt. 12 Foot Slider Door

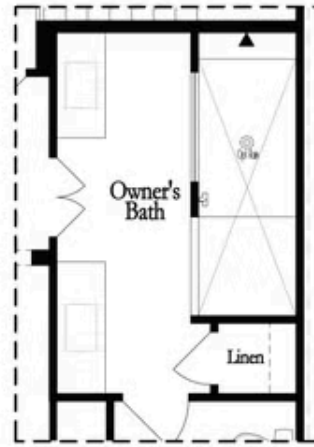
Main Level Options

Want to Know More
About This Home?

CONTACT OUR COMMUNITY SALES MANAGER
Call Us @ 470.248.2097

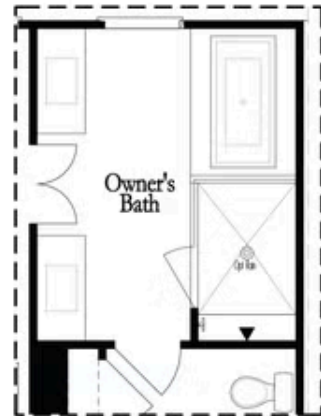


Opt. Shower/Tub



Opt. Walk-Through Shower

Owner's Front - Options



Opt. Shower/Tub



Opt. Walk-Through Shower

Owner's Rear - Options

Want to Know More
 About This Home?

CONTACT OUR COMMUNITY SALES MANAGER
 Call Us @ 470.248.2097