



PRICED AT
\$581,400

 2030 Sq Ft

 3 Beds

 2.5 Baths

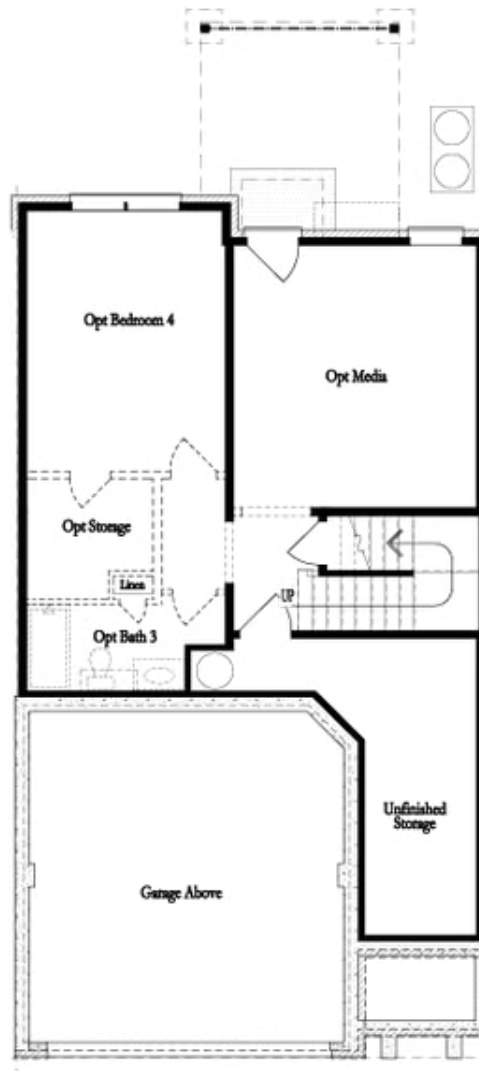
 2 Car Garage

 2.0 Story

“Elevate your savings with \$20,000 Promotion on contracts written by end of February 2026. Promotion can be applied towards a price reduction, closing costs, rate buydown and more giving you the flexibility to save where it matters most. Ends February 28, 2026. Discover the The Stockton by The Providence Group. Available for move-in April/May 2026 (Home is under construction) Location Location Location!!!!Incredible END UNIT in Gated Community by The Providence Group in the highly anticipated location. Welcome to the popular two-story Stockton floor plan, thoughtfully designed for modern living. This home features an upgraded 12-foot sliding glass door that opens to a covered patio and a fenced backyard—perfect for outdoor entertaining. The open-concept main level includes a front-entry garage, spacious family room, dining area, and a beautifully appointed kitchen with a large island, quartz countertops, stainless steel appliances, and a stylish tile backsplash. Upstairs, the expansive owner’s suite offers a luxurious retreat with a frameless glass shower, separate soaking tub, dual quartz vanities, and a generous walk-in closet. The upper level also includes a conveniently located laundry room, two secondary bedrooms, and a shared full bath. Carpeting is limited to the bedrooms for easy maintenance and a clean, modern look. ...

**Want to Know More
About This Home?**

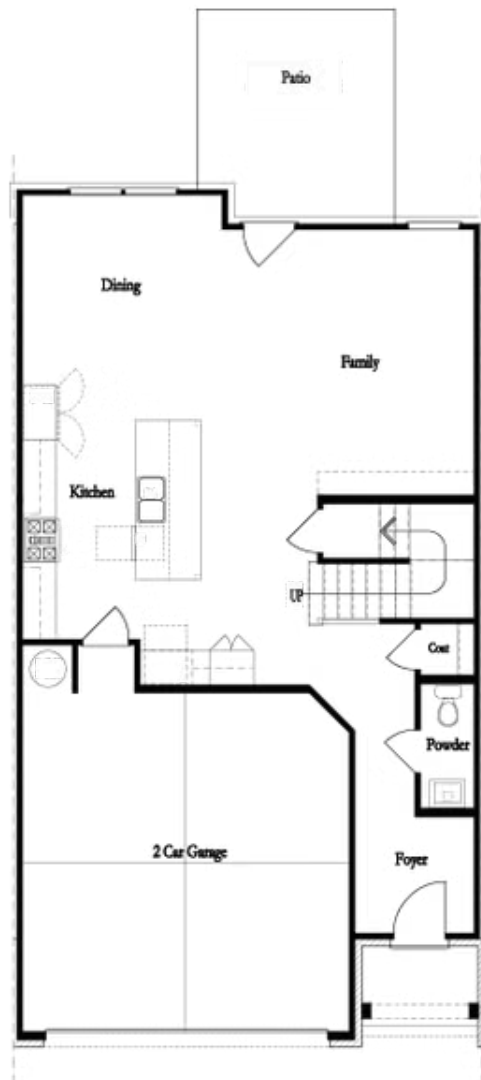
CONTACT OUR COMMUNITY SALES MANAGER
Call Us @ 470.248.2097



Unfinished Basement

Want to Know More
About This Home?

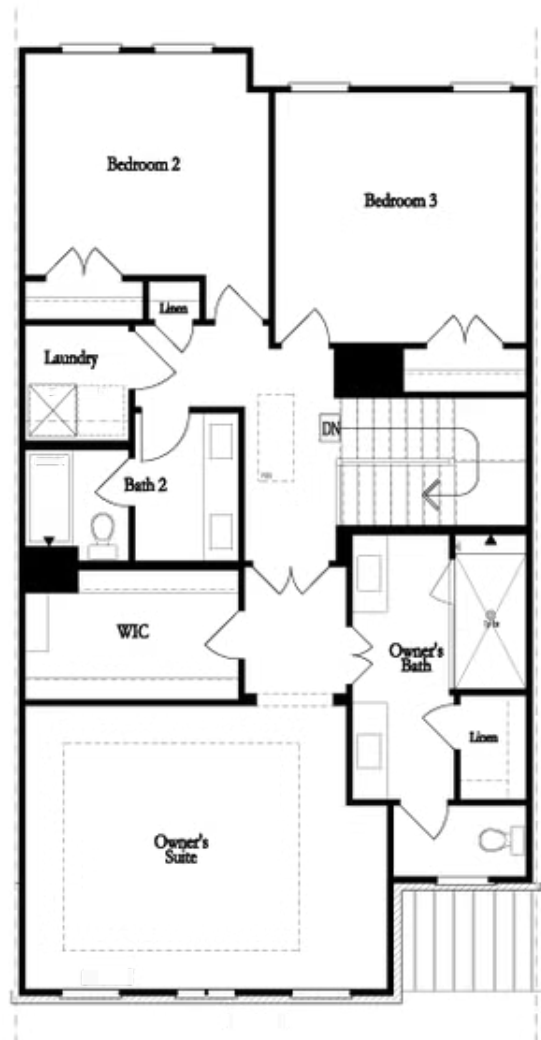
CONTACT OUR COMMUNITY SALES MANAGER
Call Us @ 470.248.2097



First Floor

**Want to Know More
About This Home?**

CONTACT OUR COMMUNITY SALES MANAGER
Call Us @ 470.248.2097

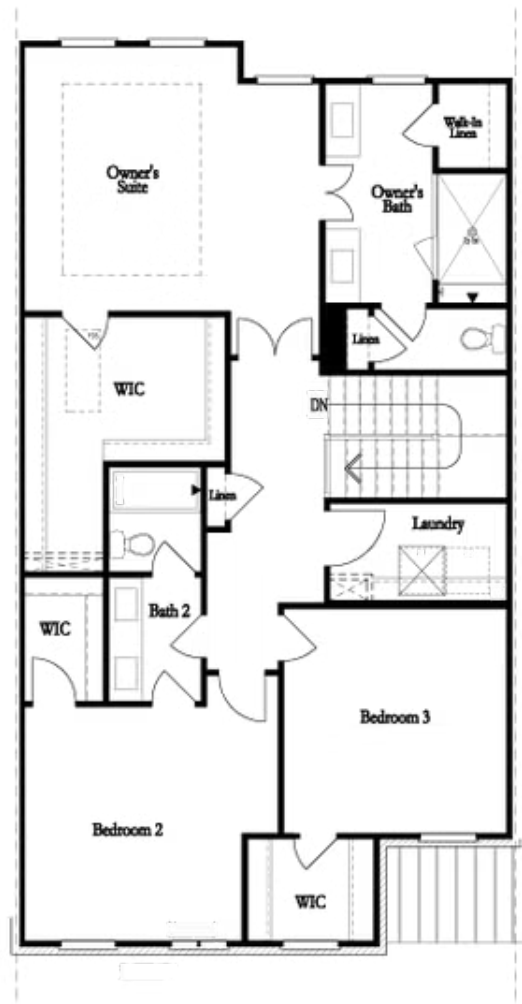


Second Floor
(Owner's Front)

Elevations G, H, J1, J3 & L

Want to Know More
About This Home?

CONTACT OUR COMMUNITY SALES MANAGER
Call Us @ 470.248.2097

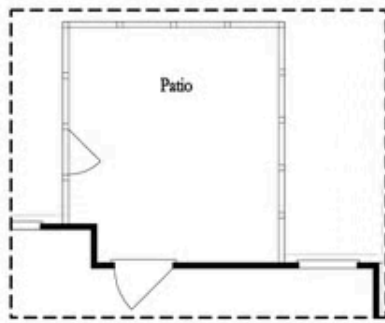


Second Floor
(Owner's Rear)

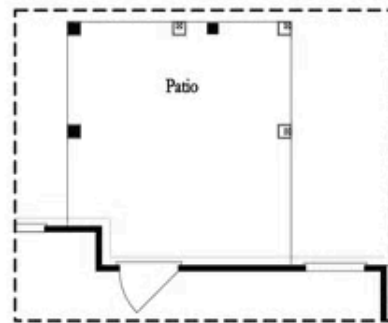
Elevations G, H, J1, J3 & L

Want to Know More
About This Home?

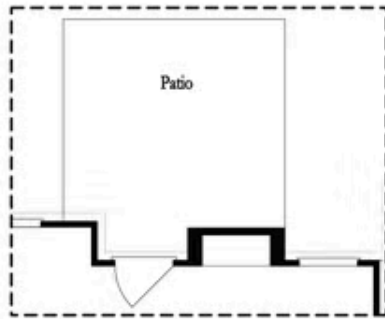
CONTACT OUR COMMUNITY SALES MANAGER
Call Us @ 470.248.2097



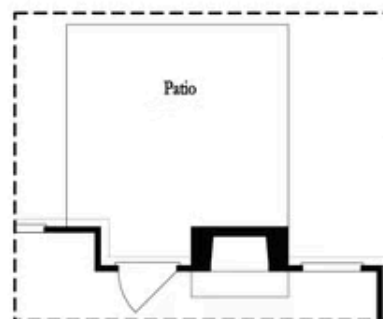
Opt. Screened Patio



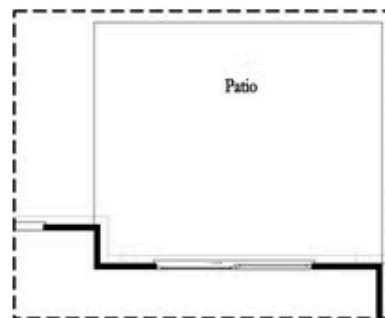
Opt. Coverd Patio



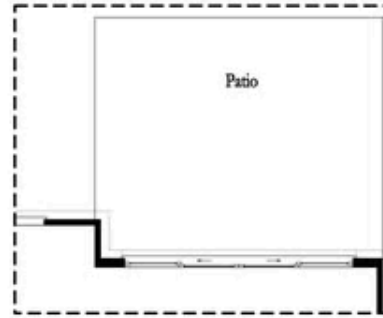
Opt. Linear Fireplace



Opt. Fireplace



Opt. 8 Foot Slider Door

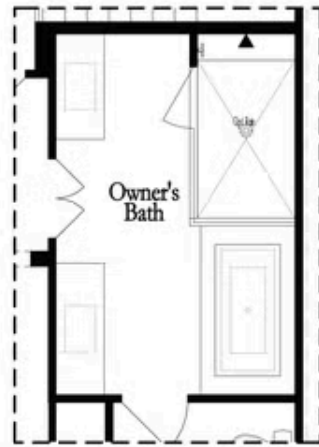


Opt. 12 Foot Slider Door

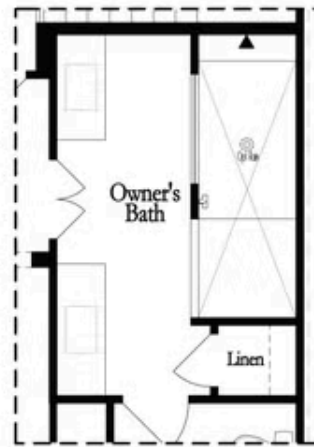
Main Level Options

Want to Know More
About This Home?

CONTACT OUR COMMUNITY SALES MANAGER
Call Us @ 470.248.2097

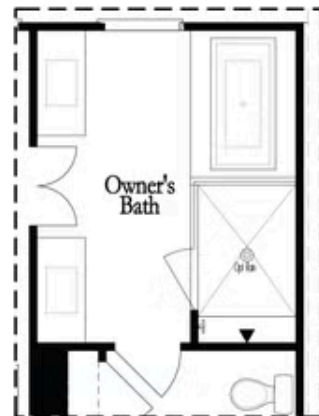


Opt. Shower/Tub



Opt. Walk-Through Shower

Owner's Front - Options



Opt. Shower/Tub



Opt. Walk-Through Shower

Owner's Rear - Options

Want to Know More
About This Home?

CONTACT OUR COMMUNITY SALES MANAGER
Call Us @ 470.248.2097