



PRICED AT
\$525,900

 2030 Sq Ft

 3 Beds

 2.5 Baths

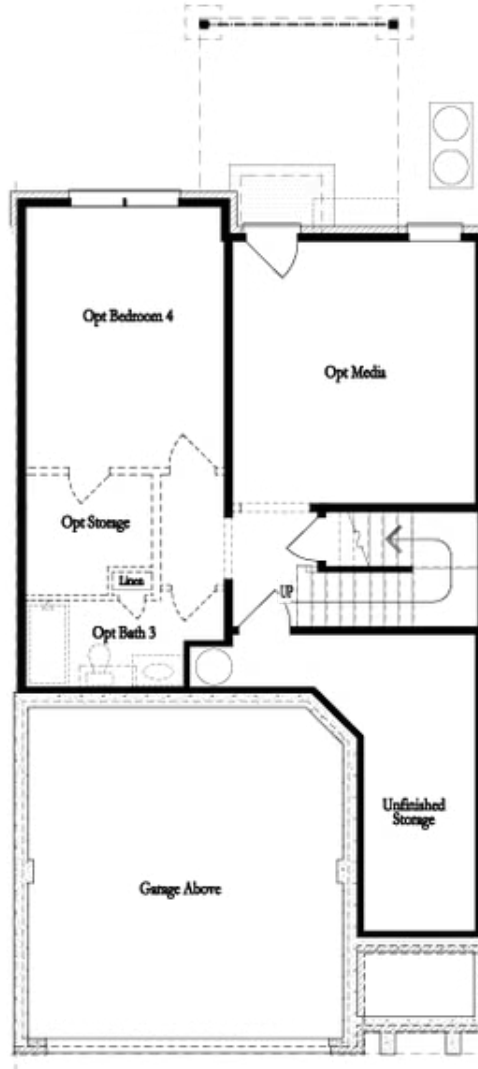
 2 Car Garage

 2.0 Story

"Home of the Month!!! MOVE IN READY!! Location Location Location!!!!Incredible home, don't miss out on final opportunity for Stockton that's close to Resort Style Pool and facing Pocket park in Gated Community by The Providence Group in the highly anticipated location. Welcome to the popular two-story Stockton floor plan, thoughtfully designed for modern living. This home features an upgraded 8-foot sliding glass door that opens to a covered patio and a fenced backyard—perfect for outdoor entertaining. The open-concept main level includes a front-entry garage, spacious family room, dining area, and a beautifully appointed kitchen with a large island, quartz countertops, stainless steel appliances, and a stylish tile backsplash. Upstairs, the expansive owner's suite offers a luxurious retreat with an upgraded Huge Walk in Shower with Drying area, dual quartz vanities, and a generous walk-in closet. The upper level also includes a conveniently located laundry room, two secondary bedrooms, and a shared full bath. Carpeting is limited to the bedrooms for easy maintenance and a clean, modern look. Located in unincorporated Gwinnett County, this home is just minutes from downtown Sugar Hill, Suwanee Town Center, and Buford. Enjoy access to incredible community amenities including a pool, fitness center, parks, green space. ...

**Want to Know More
About This Home?**

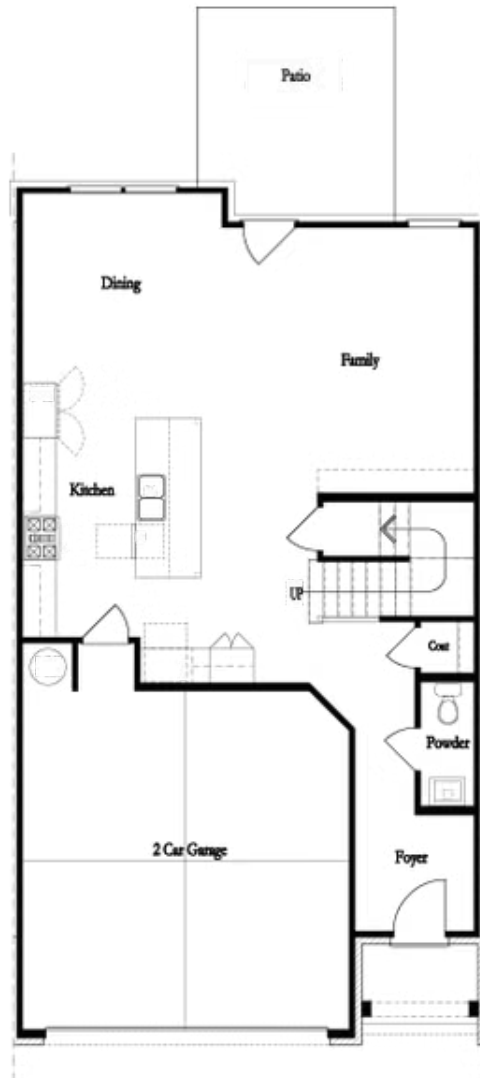
CONTACT OUR COMMUNITY SALES MANAGER
Call Us @ 470.248.2097



Unfinished Basement

**Want to Know More
About This Home?**

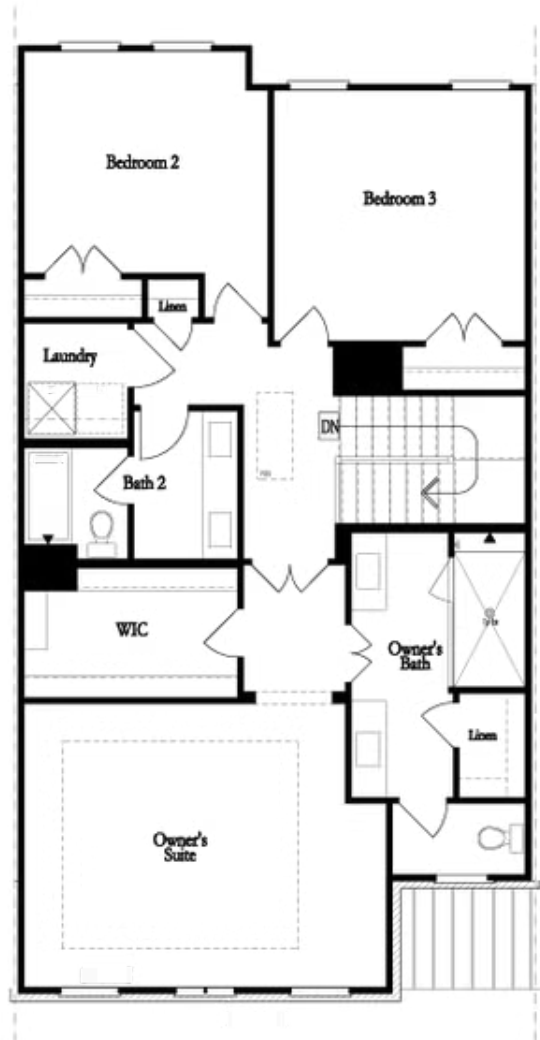
CONTACT OUR COMMUNITY SALES MANAGER
Call Us @ 470.248.2097



First Floor

**Want to Know More
About This Home?**

CONTACT OUR COMMUNITY SALES MANAGER
Call Us @ 470.248.2097

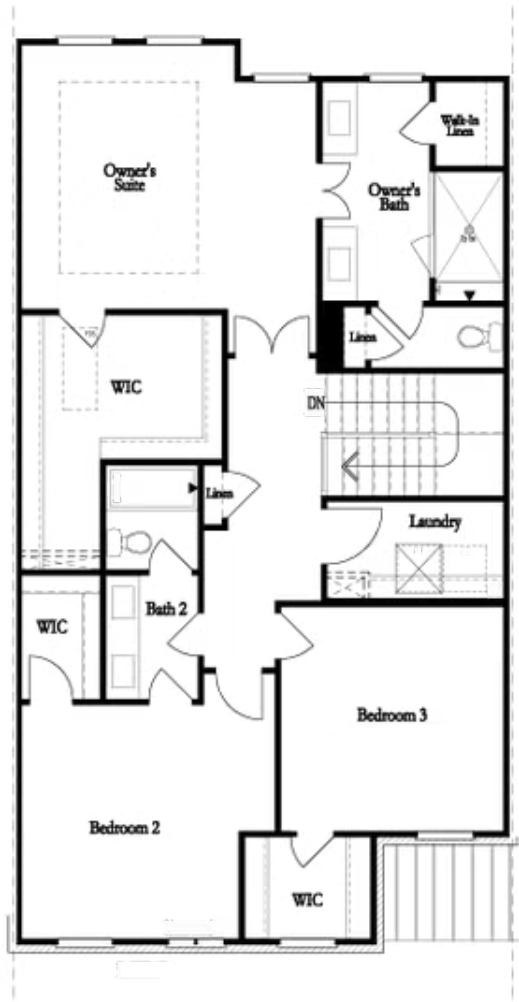


Second Floor
(Owner's Front)

Elevations G, H, JI, J3 & L

**Want to Know More
About This Home?**

CONTACT OUR COMMUNITY SALES MANAGER
Call Us @ 470.248.2097

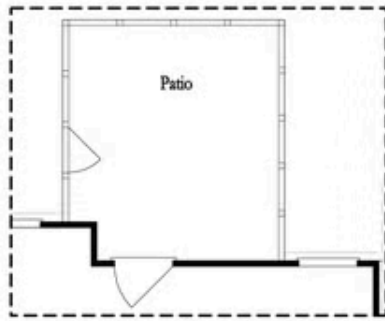


Second Floor
(Owner's Rear)

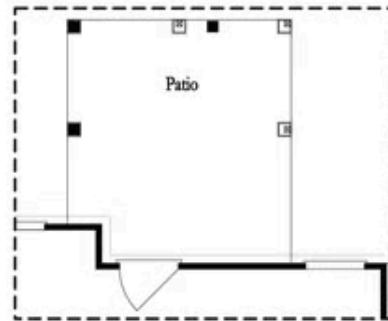
Elevations G, H, JI, J3 & L

Want to Know More
About This Home?

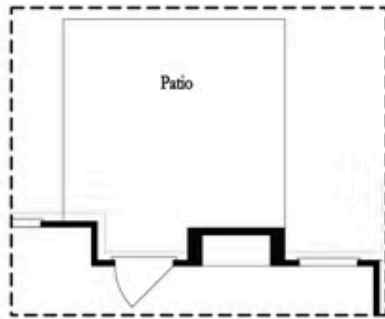
CONTACT OUR COMMUNITY SALES MANAGER
Call Us @ 470.248.2097



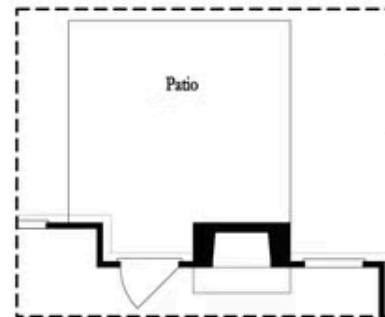
Opt. Screened Patio



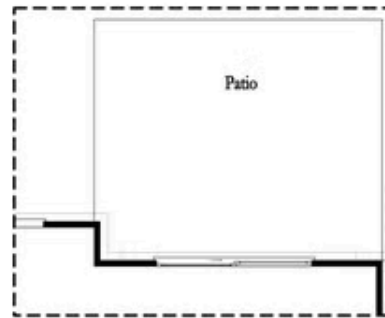
Opt. Coverd Patio



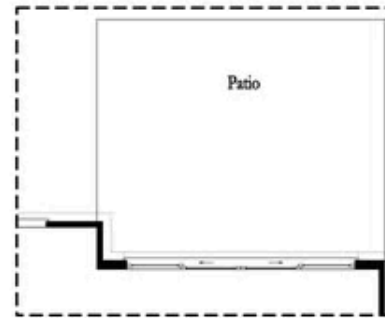
Opt. Linear Fireplace



Opt. Fireplace



Opt. 8 Foot Slider Door

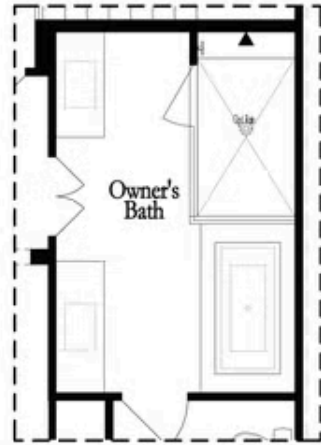


Opt. 12 Foot Slider Door

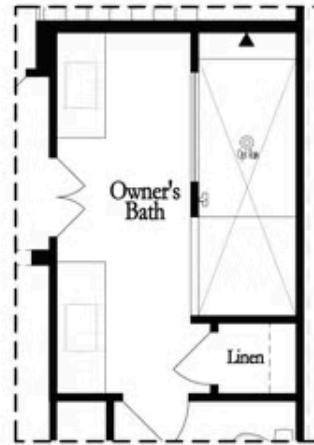
Main Level Options

Want to Know More
 About This Home?

CONTACT OUR COMMUNITY SALES MANAGER
 Call Us @ 470.248.2097

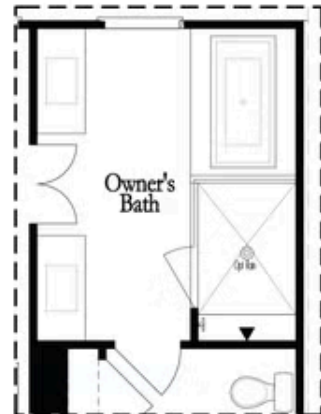


Opt. Shower/Tub

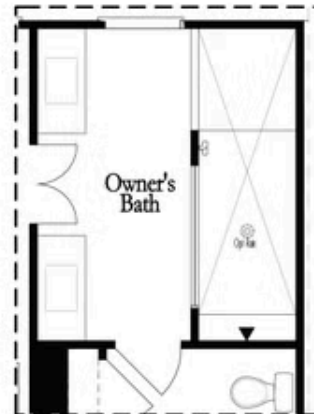


Opt. Walk-Through Shower

Owner's Front - Options



Opt. Shower/Tub



Opt. Walk-Through Shower

Owner's Rear - Options

Want to Know More
 About This Home?

CONTACT OUR COMMUNITY SALES MANAGER
 Call Us @ 470.248.2097