



PRICED AT  
**\$555,540**

 2030 Sq Ft

 3 Beds

 2.5 Baths

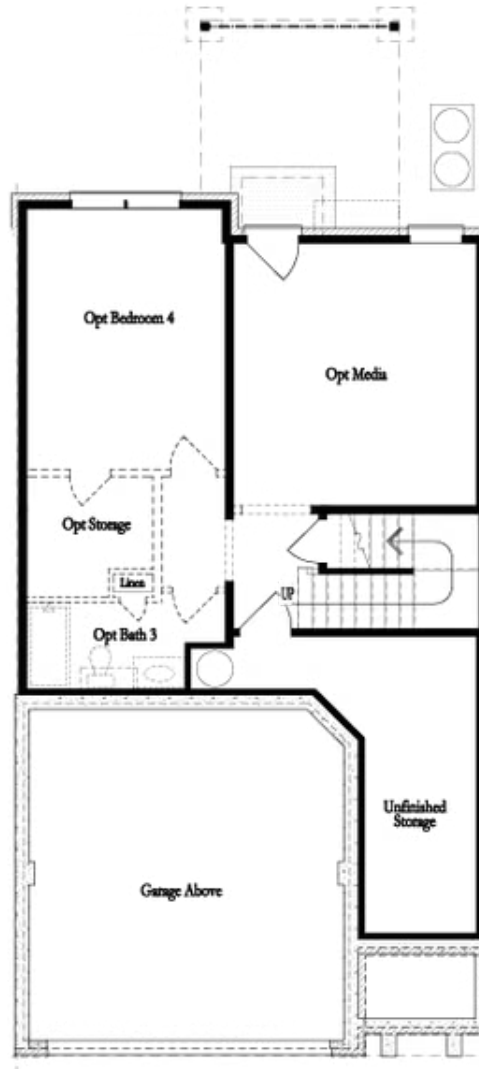
 2 Car Garage

 2.0 Story

Discover The Stockton floor plan by The Providence Group. Ready Now for Summer! This home faces the big pocket park with firepits and mail kiosk. Very open and green, such a pretty view! There is also some extra parking for guests right out front your front door. Enter in to this beautiful home with 9ft. ceilings on first and second floors. Entry/foyer offers a space for a place to put shoes, keys, hats, umbrellas, etc. As you come in, you will find a coat closet and powder room. The kitchen on the main floor offers open concept living at its best, huge kitchen island - quartz, single bowl SS sink, garbage disposal, backsplash/tile to the ceiling behind the hood, 42" upper kitchen cabinets - white with black hardware as an upgrade - soft close doors and drawers in the kitchen, built in microwave for a sleek/clean look. Seating in the dining area for at least a table of six. Family room furniture can be configured many different ways while enjoying the linear fireplace on cold days and nights, very eye catching, and also for stockings at Christmas. Yes, the holidays will be coming. This home is an interior unit with ...

**Want to Know More  
About This Home?**

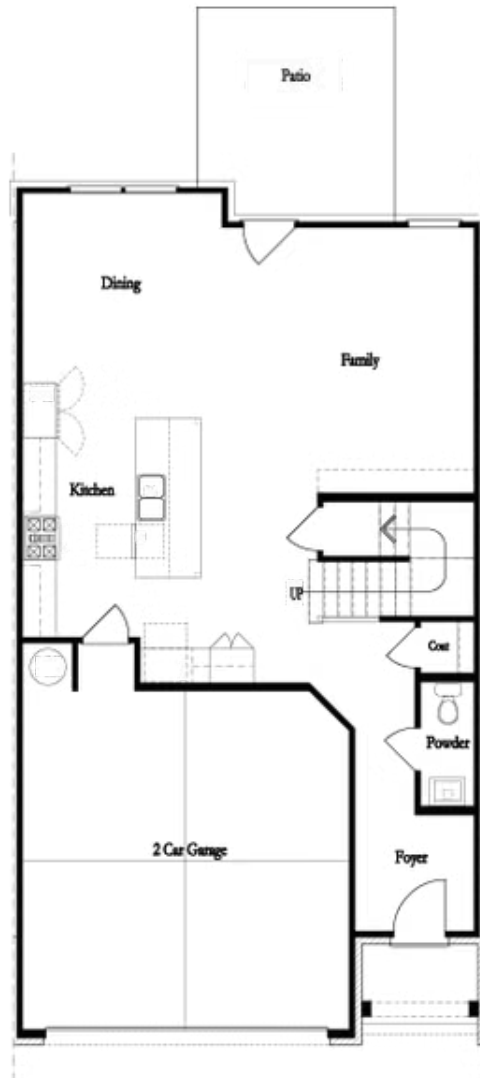
CONTACT OUR COMMUNITY SALES MANAGER  
Call Us @ 470.248.2097



**Unfinished Basement**

**Want to Know More  
About This Home?**

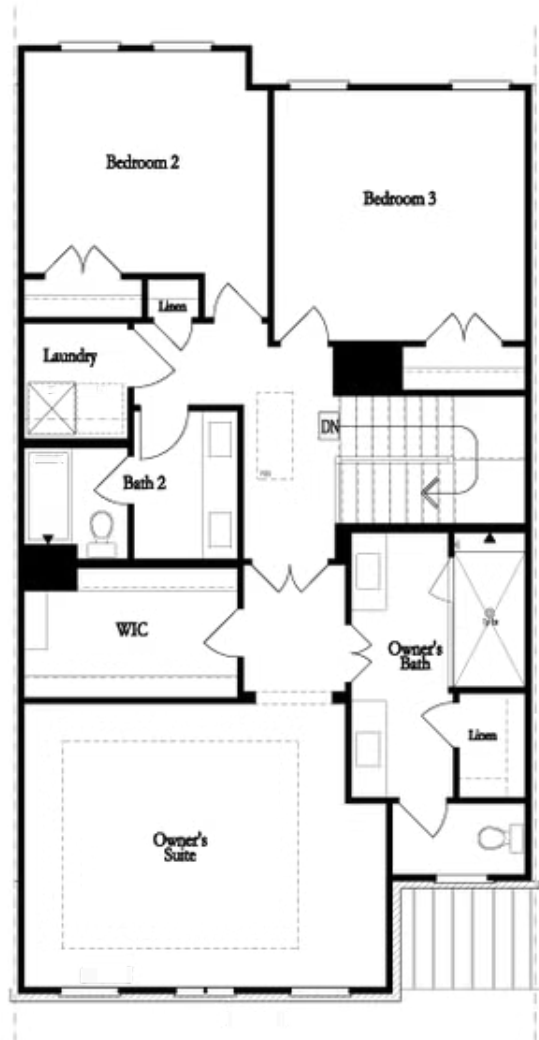
CONTACT OUR COMMUNITY SALES MANAGER  
Call Us @ 470.248.2097



**First Floor**

**Want to Know More  
About This Home?**

CONTACT OUR COMMUNITY SALES MANAGER  
Call Us @ 470.248.2097

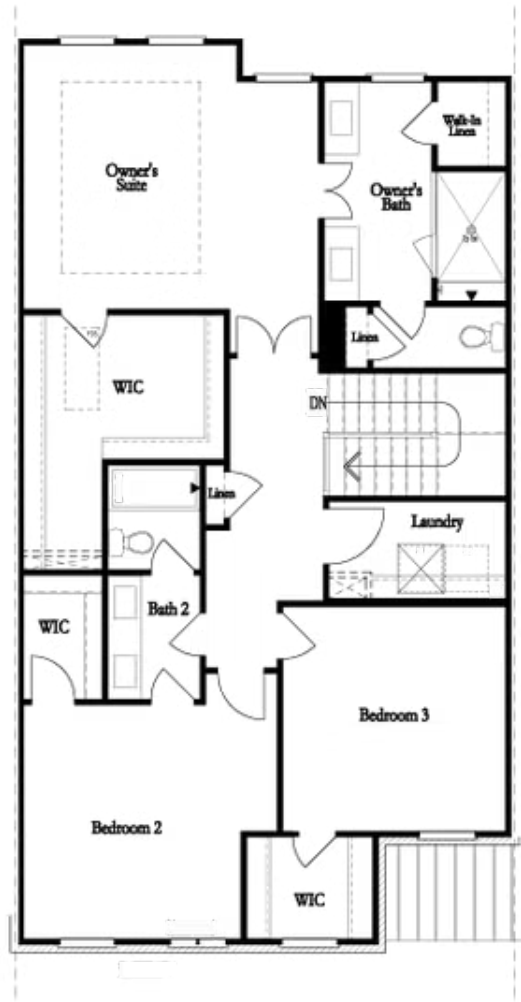


**Second Floor**  
**(Owner's Front)**

Elevations G, H, JI, J3 & L

**Want to Know More  
About This Home?**

CONTACT OUR COMMUNITY SALES MANAGER  
Call Us @ 470.248.2097

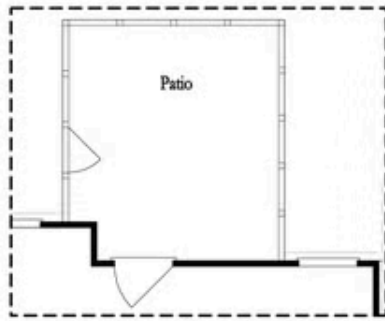


Second Floor  
(Owner's Rear)

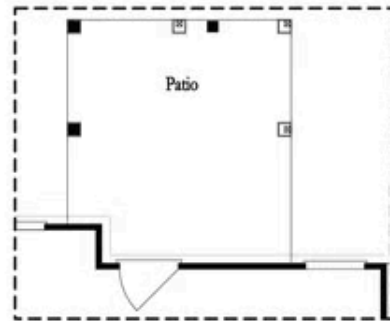
Elevations G, H, JI, J3 & L

Want to Know More  
About This Home?

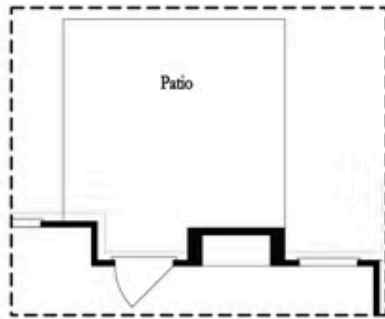
CONTACT OUR COMMUNITY SALES MANAGER  
Call Us @ 470.248.2097



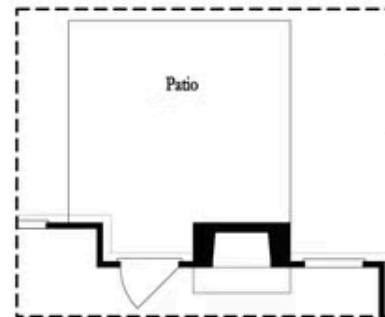
Opt. Screened Patio



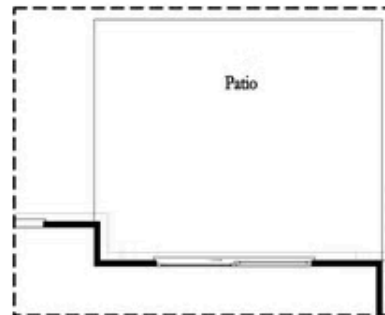
Opt. Coverd Patio



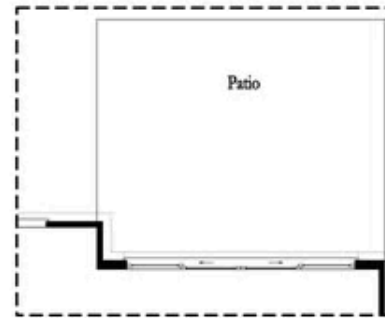
Opt. Linear Fireplace



Opt. Fireplace



Opt. 8 Foot Slider Door

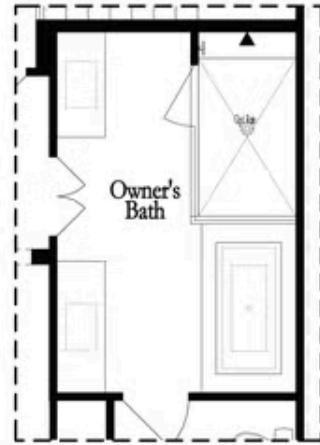


Opt. 12 Foot Slider Door

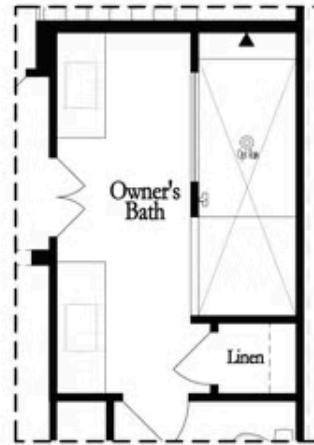
Main Level Options

Want to Know More  
 About This Home?

CONTACT OUR COMMUNITY SALES MANAGER  
 Call Us @ 470.248.2097

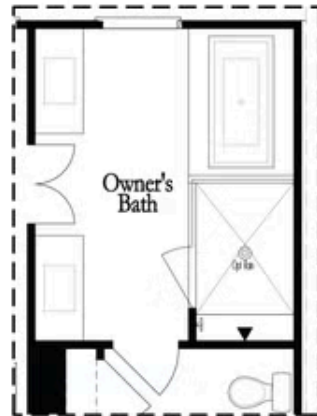


Opt. Shower/Tub



Opt. Walk-Through Shower

Owner's Front - Options



Opt. Shower/Tub



Opt. Walk-Through Shower

Owner's Rear - Options

Want to Know More  
About This Home?

CONTACT OUR COMMUNITY SALES MANAGER  
Call Us @ 470.248.2097