






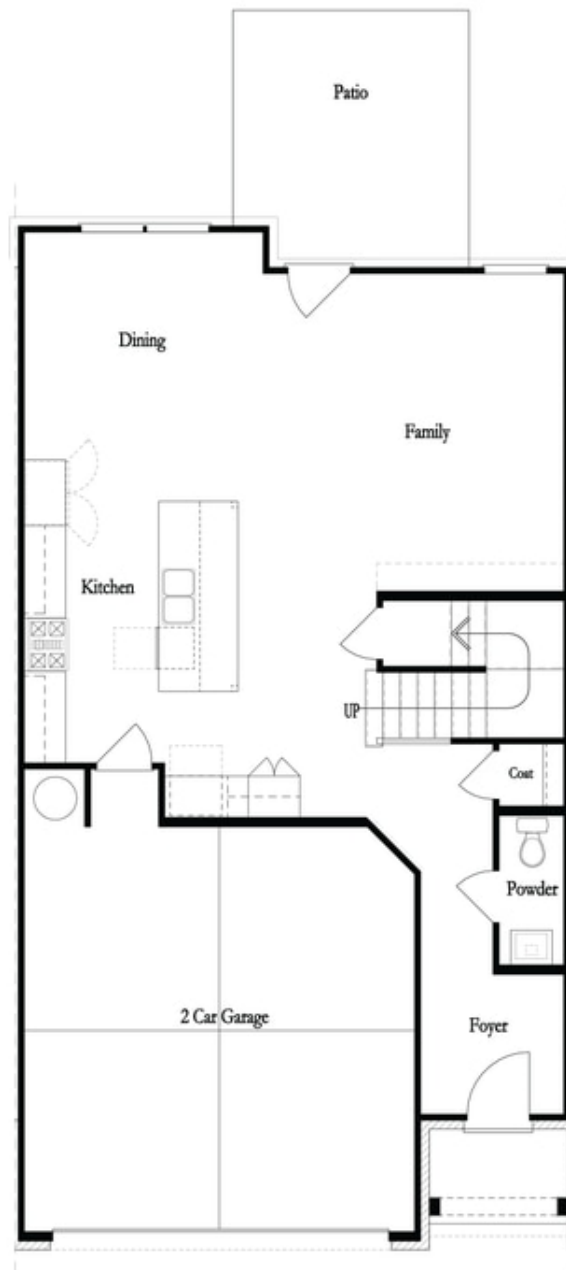
PRICED AT  
**\$528,000**

-  2030 Sq Ft
-  3 Beds
-  2.5 Baths
-  2 Car Garage
-  2.0 Story

**END UNIT : MOVE IN READY HOME - QUICK CLOSE!!! ELEVATE YOUR LIFE IN 2023! NEW YEAR NEW PRICE PLUS \$20,000 ANY WAY YOU WANT IT ON CONTRACTS WRITTEN BY MARCH 31, 2023 Your new home will offer 2 story design floor plan entry on main level with garage in front and a cozy backyard. A Private foyer on the main level leads you to a Gourmet Kitchen with White Cabinets, Large island and quartz countertops that overlook the dining & family room. Enjoy your Fireplace over the Holidays and many other days with friends and family or relaxing downtime. When you head to the 2nd floor you will enter a spacious owner's suite that offers the Upgraded Huge Walk-in Shower with drying area that includes tile to the ceiling, dual vanities with quartz countertops & walk in closet. Carpets are only on the 2nd floor in the bedrooms. The laundry room is located in the hallway on the upper level along with 2 secondary bedrooms and shared bath. Blinds included in this home. This community is in highly desirable location in unincorporated Gwinnett County and close to 3 vibrant cities - downtown Sugar Hill, Suwanee Town Center and Buford!! ...**

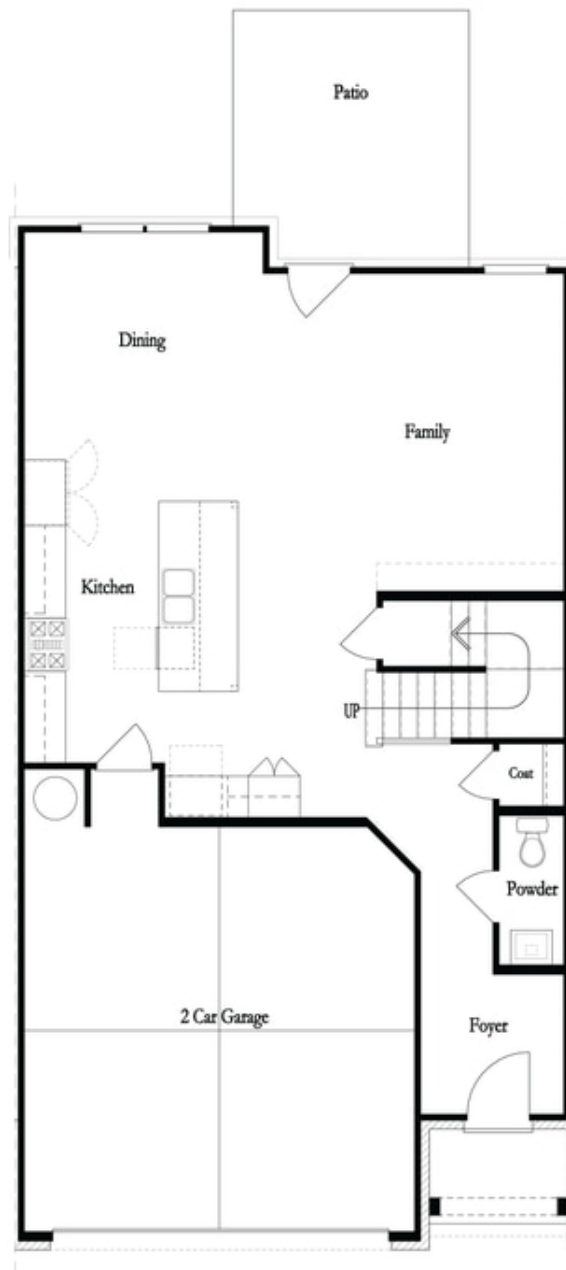
**Want to Know More  
About This Home?**

**CONTACT OUR COMMUNITY SALES MANAGER**  
**Call Us @ 470.248.2097**



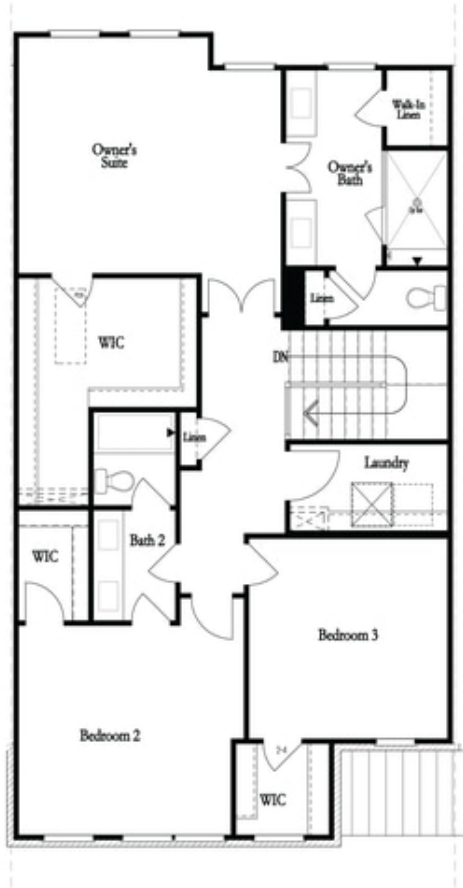
**Want to Know More  
About This Home?**

**CONTACT OUR COMMUNITY SALES MANAGER**  
**Call Us @ 470.248.2097**

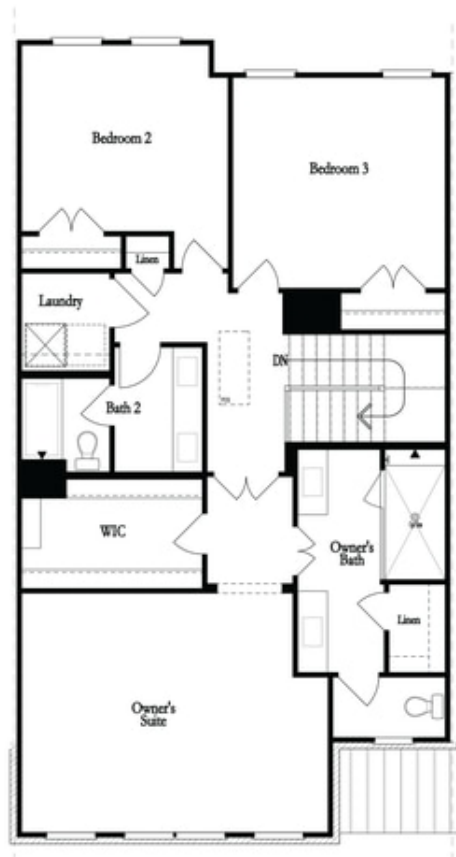


**Want to Know More  
About This Home?**

**CONTACT OUR COMMUNITY SALES MANAGER**  
Call Us @ 470.248.2097



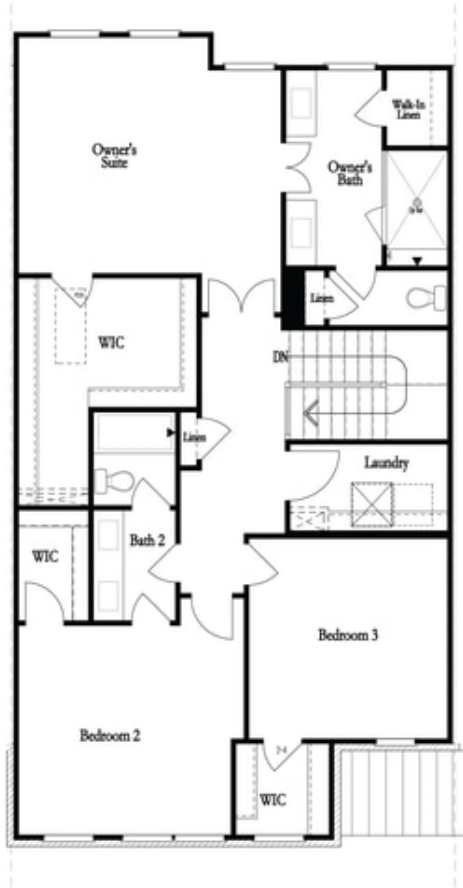
Second Floor - Owner's Rear



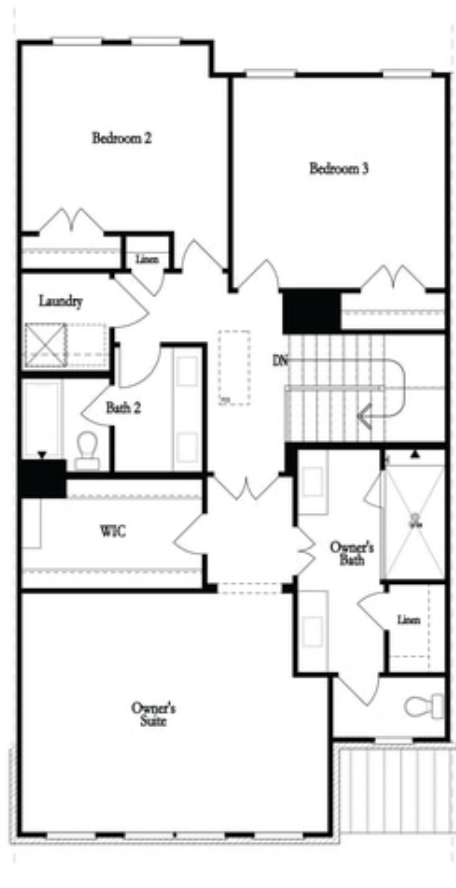
Second Floor - Owner's Front

Want to Know More  
About This Home?

CONTACT OUR COMMUNITY SALES MANAGER  
Call Us @ 470.248.2097



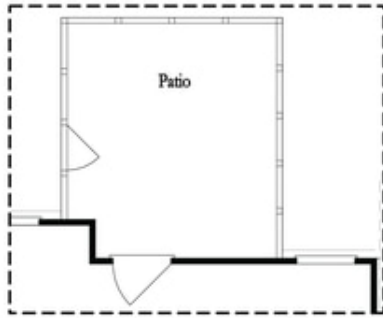
Second Floor - Owner's Rear



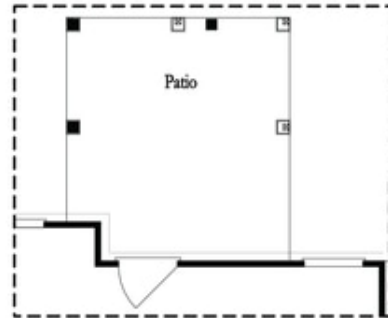
Second Floor - Owner's Front

Want to Know More  
About This Home?

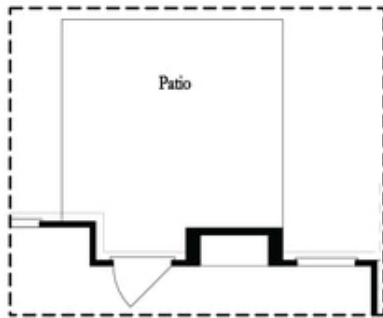
CONTACT OUR COMMUNITY SALES MANAGER  
Call Us @ 470.248.2097



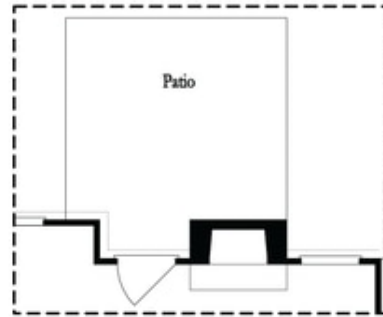
Opt. Screened Patio



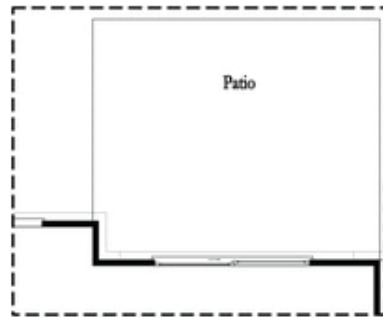
Opt. Covered Patio



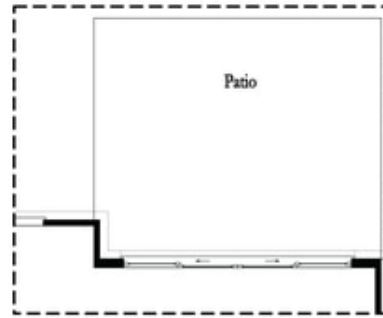
Opt. Linear Fireplace



Opt. Fireplace



Opt. 8 Foot Slider Door

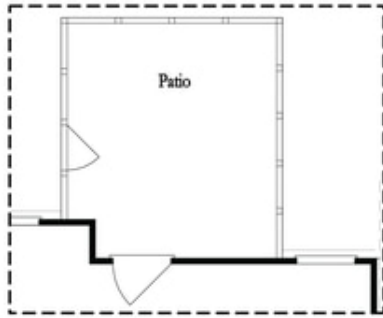


Opt. 12 Foot Slider Door

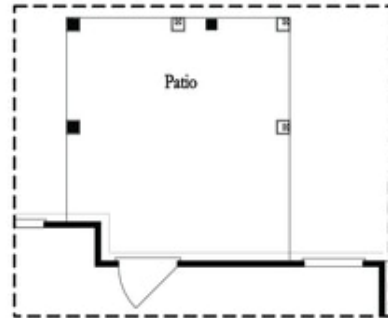
Main Level Options

Want to Know More  
About This Home?

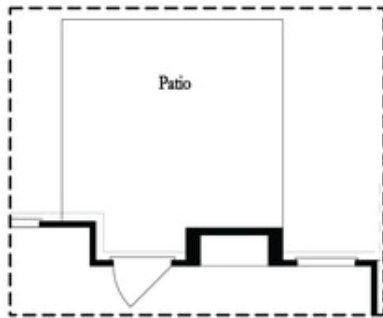
CONTACT OUR COMMUNITY SALES MANAGER  
Call Us @ 470.248.2097



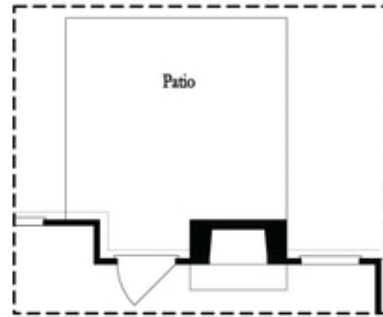
Opt. Screened Patio



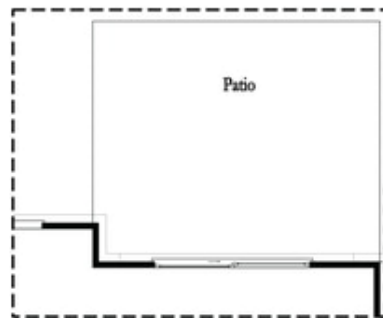
Opt. Covered Patio



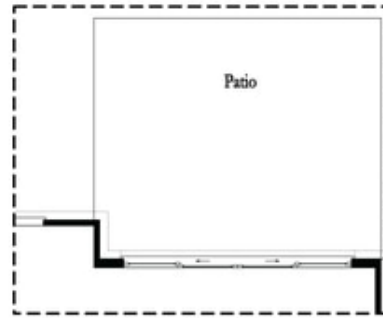
Opt. Linear Fireplace



Opt. Fireplace



Opt. 8 Foot Slider Door

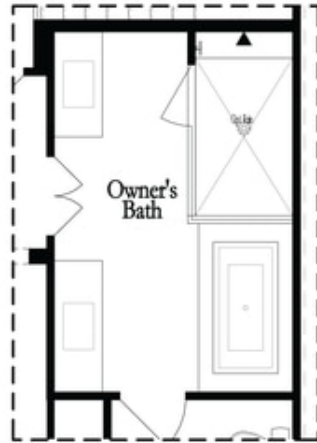


Opt. 12 Foot Slider Door

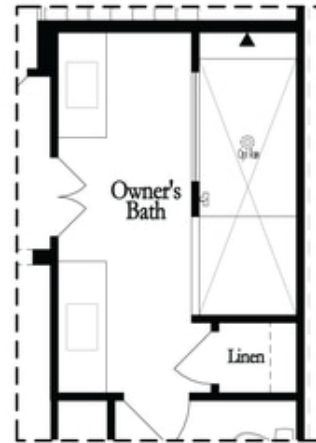
Main Level Options

Want to Know More  
About This Home?

CONTACT OUR COMMUNITY SALES MANAGER  
Call Us @ 470.248.2097

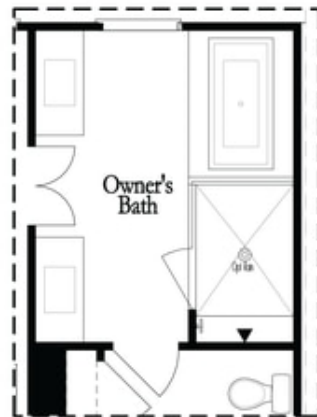


Opt. Shower/Tub

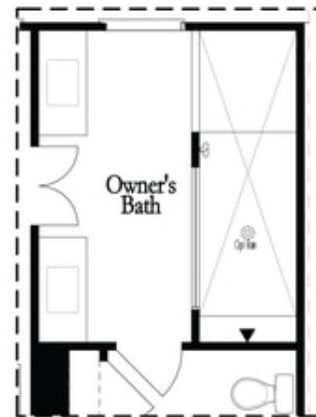


Opt. Walk-Through Shower

Owner's Front - Options



Opt. Shower/Tub



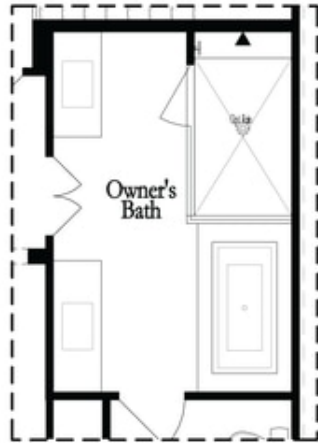
Opt. Walk-Through Shower

Owner's Rear - Options

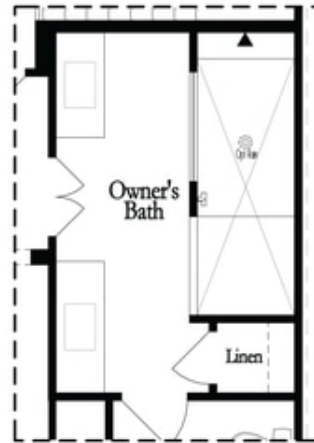
Want to Know More  
 About This Home?

CONTACT OUR COMMUNITY SALES MANAGER  
 Call Us @ 470.248.2097



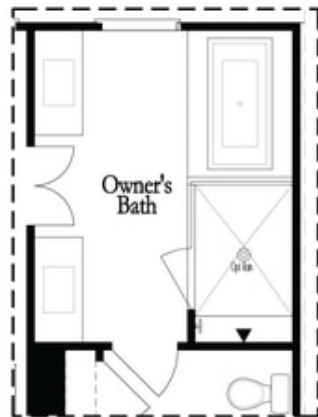


Opt. Shower/Tub

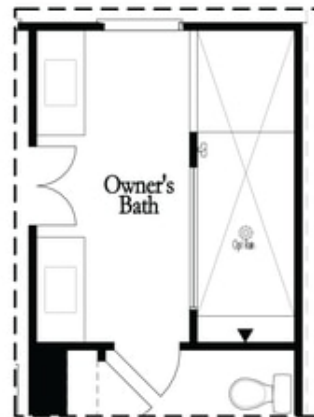


Opt. Walk-Through Shower

Owner's Front - Options



Opt. Shower/Tub



Opt. Walk-Through Shower

Owner's Rear - Options

**Want to Know More  
 About This Home?**

**CONTACT OUR COMMUNITY SALES MANAGER**  
 Call Us @ 470.248.2097