



PRICED AT  
**\$521,890**

 2030 Sq Ft

 3 Beds

 2.5 Baths

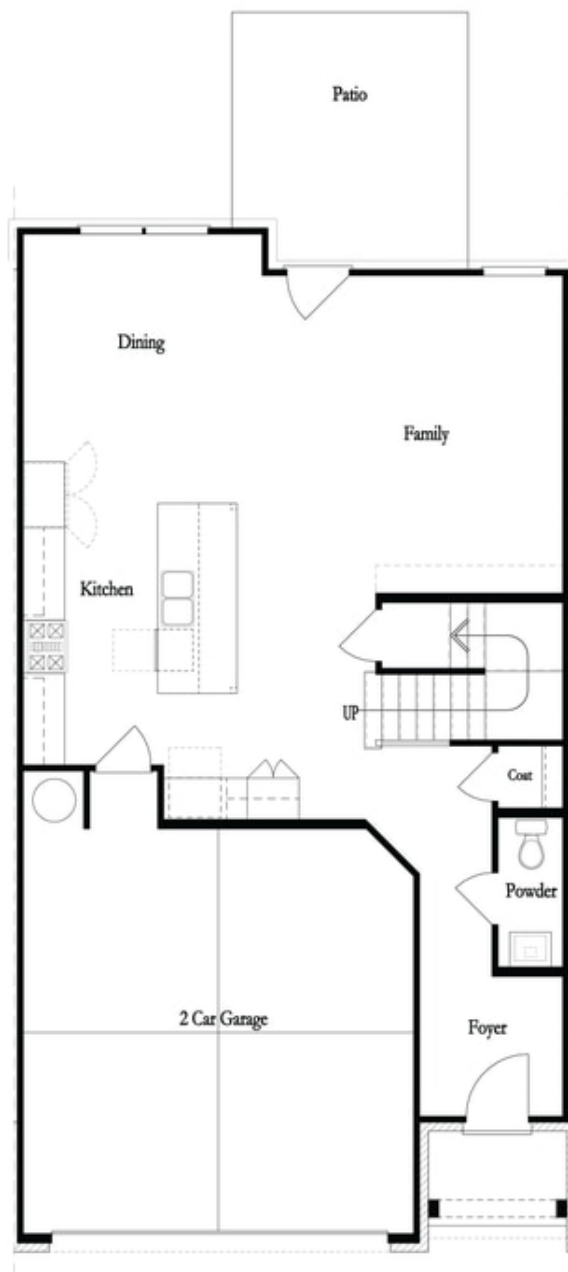
 2 Car Garage

 2.0 Story

**Quick Move In \*Elevate your life in 2023 with a new home by The Providence Group and \$10,000 towards closing cost when financing with one of Seller's 4 preferred lenders- Home must close by 9/30/23\*\* \* This wonderful 2 story Townhome The Stockton Plan by The Providence Group could be yours!! This brand new home is under construction in a Gated Community. The upgraded Sliding door on the main floor leads to your private patio and fenced quaint yard. Your new home will offer entry on main level with 2 car garage in the front. The foyer entry leads to your Open Concept main level with a Large kitchen island, quartz countertops that will overlook the dining & family room. The large owners suite and 2 secondary bedrooms are on the 2nd floor. The owners bath has His/Hers vanities and a large walk in shower. The laundry room which is located in the hallway on the upper level offers easy convenience. Blinds are included in this home! This brand new highly anticipated community is in desirable location in unincorporated Gwinnett County and close to 3 vibrant cities - downtown Sugar Hill, Suwanee Town Center and Buford!! Incredible amenities will be ...**

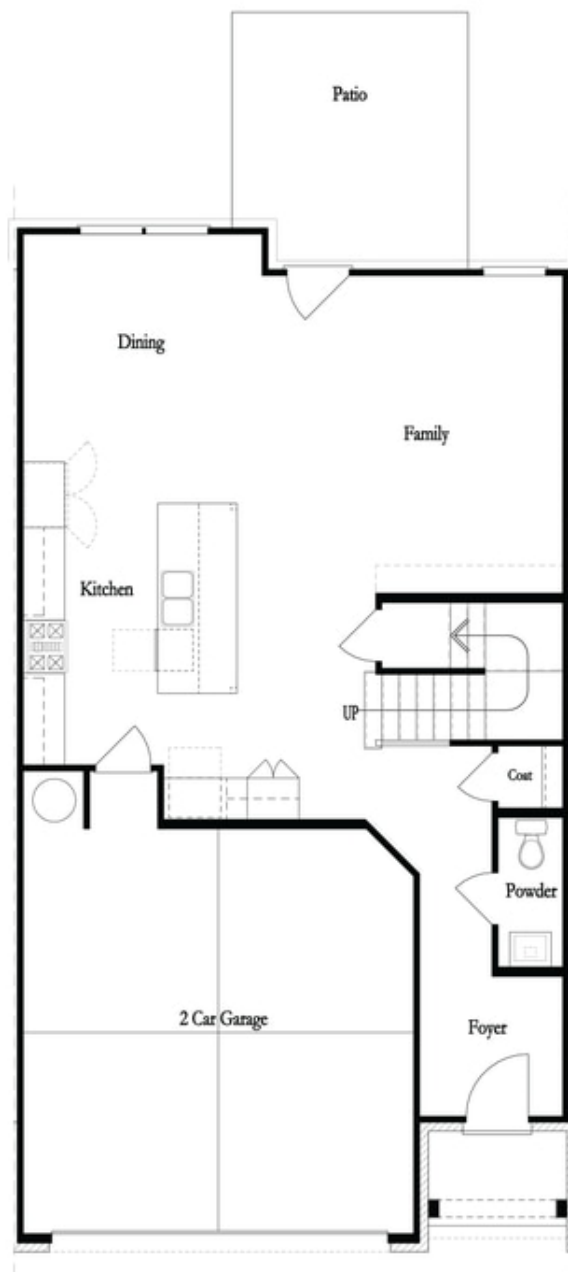
**Want to Know More  
About This Home?**

CONTACT OUR COMMUNITY SALES MANAGER  
Call Us @ 470-248-2097



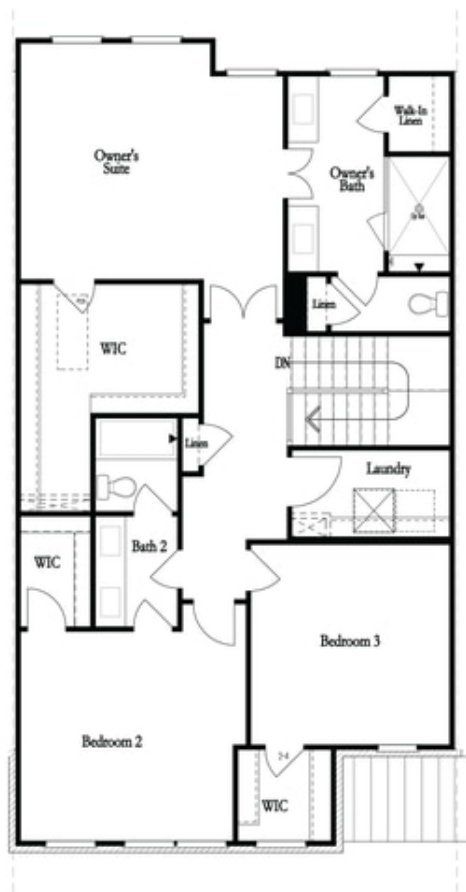
**Want to Know More  
About This Home?**

CONTACT OUR COMMUNITY SALES MANAGER  
Call Us @ 470-248-2097

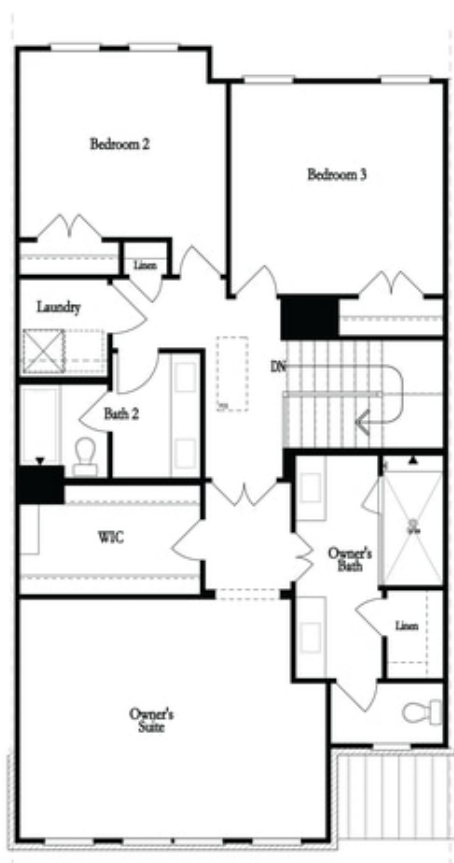


**Want to Know More  
About This Home?**

CONTACT OUR COMMUNITY SALES MANAGER  
Call Us @ 470-248-2097



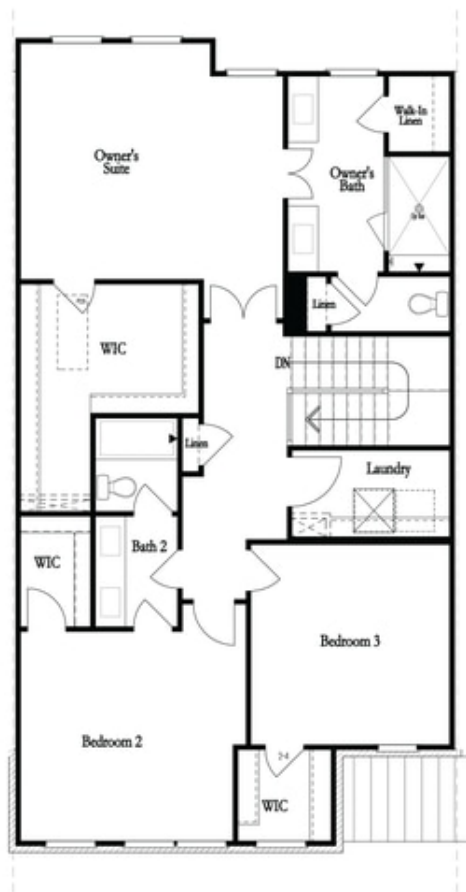
Second Floor - Owner's Rear



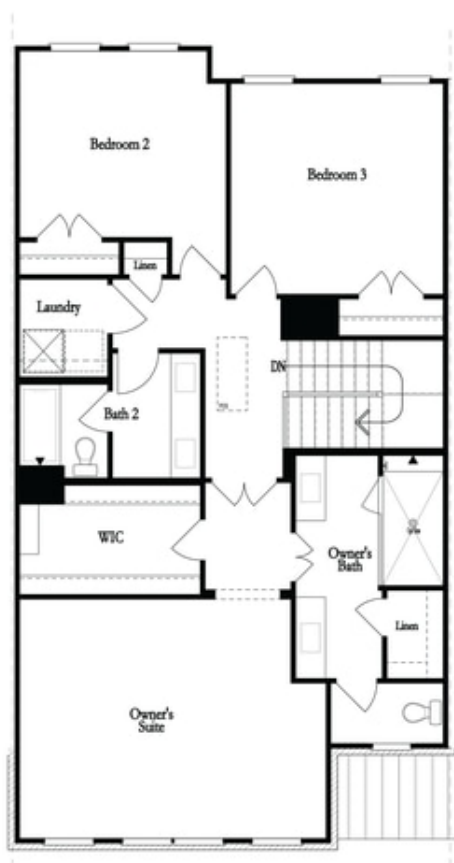
Second Floor - Owner's Front

**Want to Know More  
About This Home?**

CONTACT OUR COMMUNITY SALES MANAGER  
Call Us @ 470-248-2097



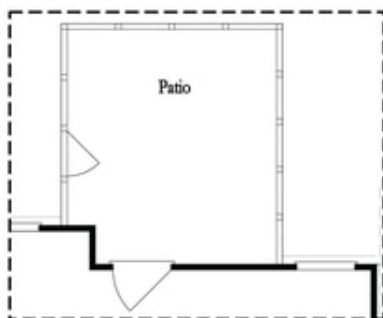
Second Floor - Owner's Rear



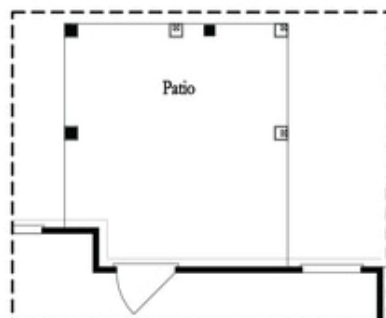
Second Floor - Owner's Front

**Want to Know More  
About This Home?**

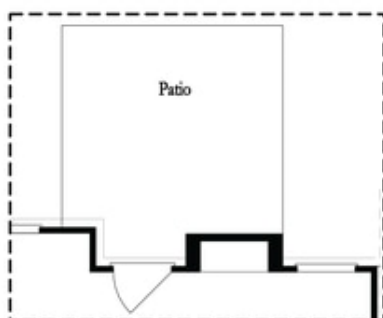
CONTACT OUR COMMUNITY SALES MANAGER  
Call Us @ 470-248-2097



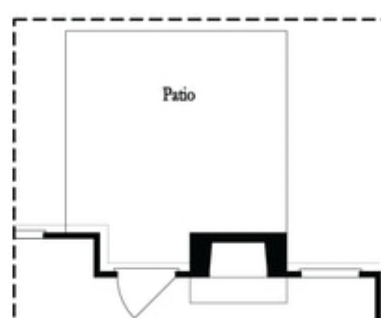
Opt. Screened Patio



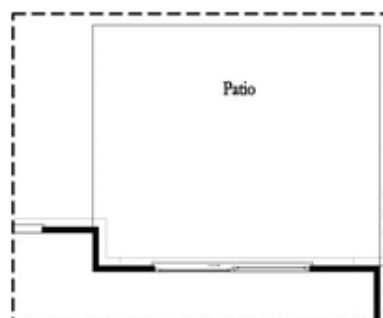
Opt. Coverd Patio



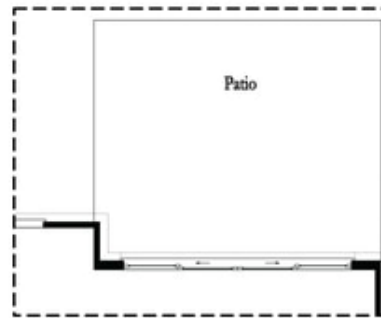
Opt. Linear Fireplace



Opt. Fireplace



Opt. 8 Foot Slider Door

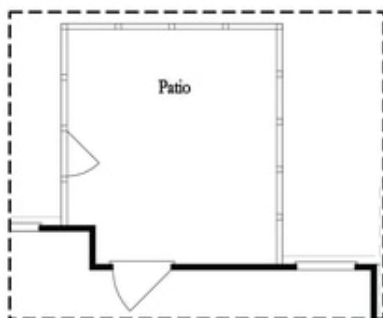


Opt. 12 Foot Slider Door

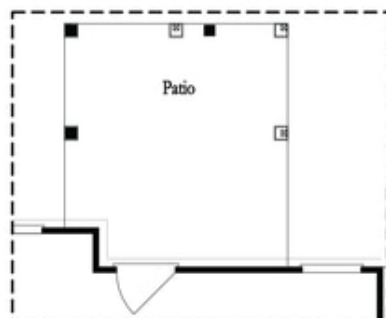
### Main Level Options

**Want to Know More  
About This Home?**

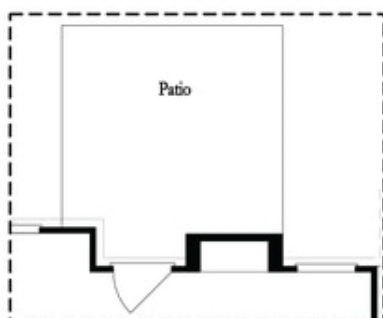
CONTACT OUR COMMUNITY SALES MANAGER  
Call Us @ 470-248-2097



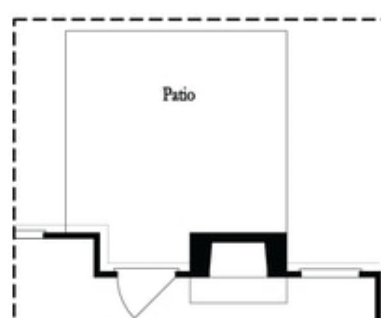
Opt. Screened Patio



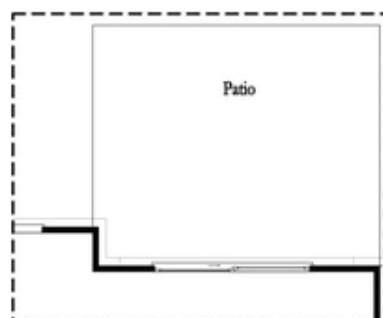
Opt. Coverd Patio



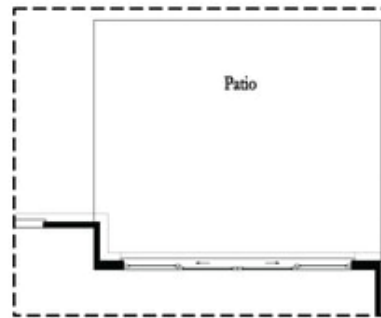
Opt. Linear Fireplace



Opt. Fireplace



Opt. 8 Foot Slider Door

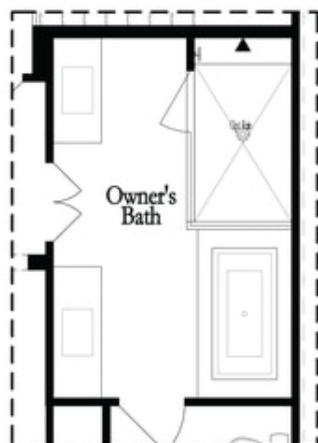


Opt. 12 Foot Slider Door

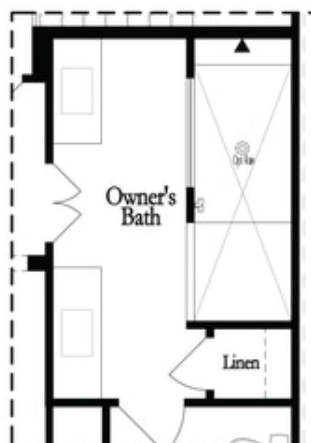
Main Level Options

**Want to Know More  
About This Home?**

CONTACT OUR COMMUNITY SALES MANAGER  
Call Us @ 470-248-2097

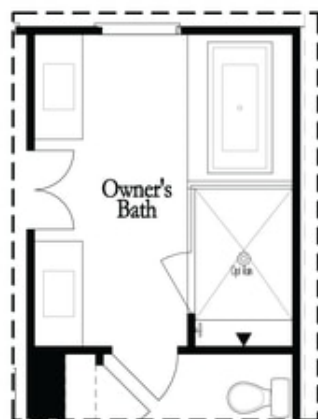


Opt. Shower/Tub

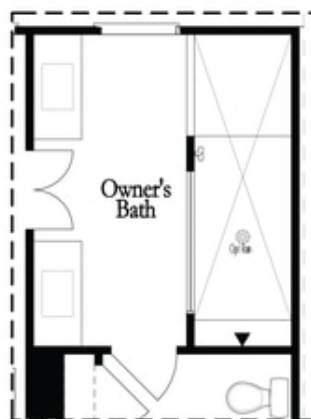


Opt. Walk-Through Shower

Owner's Front - Options



Opt. Shower/Tub



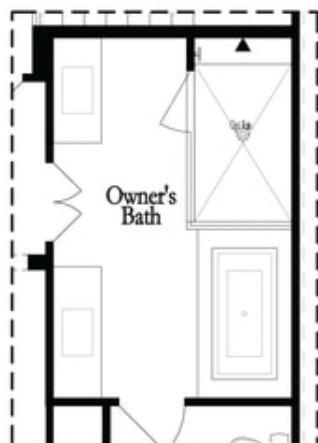
Opt. Walk-Through Shower

Owner's Rear - Options

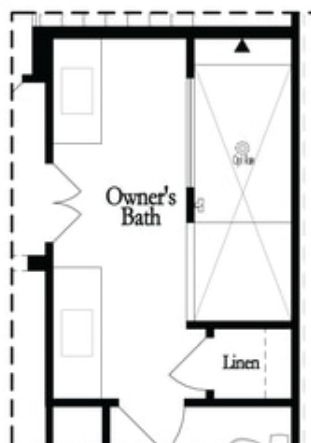
**Want to Know More  
About This Home?**

CONTACT OUR COMMUNITY SALES MANAGER  
Call Us @ 470-248-2097



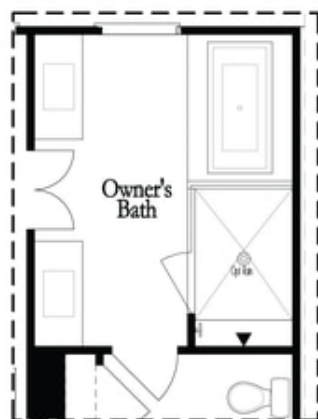


Opt. Shower/Tub

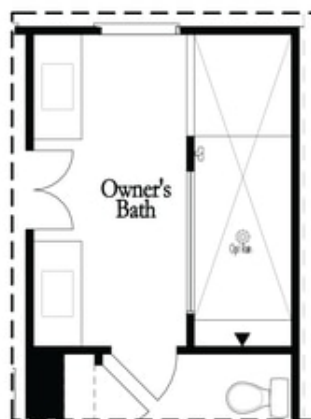


Opt. Walk-Through Shower

Owner's Front - Options



Opt. Shower/Tub



Opt. Walk-Through Shower

Owner's Rear - Options

**Want to Know More  
About This Home?**

CONTACT OUR COMMUNITY SALES MANAGER  
Call Us @ 470-248-2097