



PRICED AT
\$527,820

 2030 Sq Ft

 3 Beds

 2.5 Baths

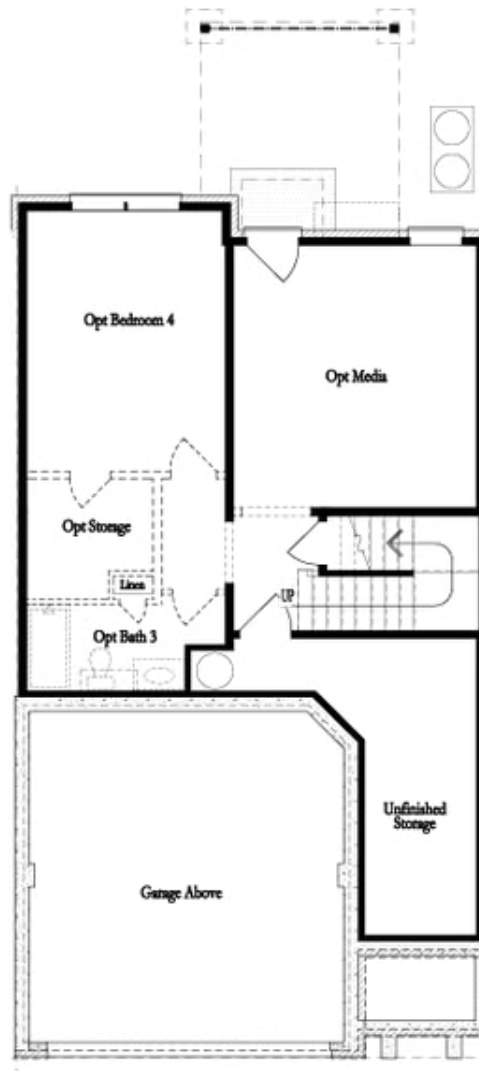
 2 Car Garage

 2.0 Story

MOVE IN READY HOME - QUICK CLOSE!!! **Elevate your life in 2023 with a new home by The Providence Group and \$5,000 towards closing cost when financing with one of Seller's preferred lenders- *! Your new home will offer 2 story design floor plan entry on main level with garage in front and a cozy backyard. A Private foyer on the main level leads you to a Gourmet Kitchen with White Cabinets, Large island and quartz countertops that overlook the dining & family room. Enjoy your Fireplace during the colder months and many other days with friends and family or relaxing downtime. When you head to the 2nd floor you will enter a spacious owner's suite that offers the Upgraded Huge Walk-in Shower with drying area that includes tile to the ceiling, dual vanities with quartz countertops & walk in closet. Carpets are only on the 2nd floor in the bedrooms. The laundry room is located in the hallway on the upper level along with 2 secondary bedrooms and shared bath. Blinds are included in this home. This community is in highly desirable location in unincorporated Gwinnett County and close to 3 vibrant cities - downtown Sugar Hill, Suwanee Town ...

**Want to Know More
About This Home?**

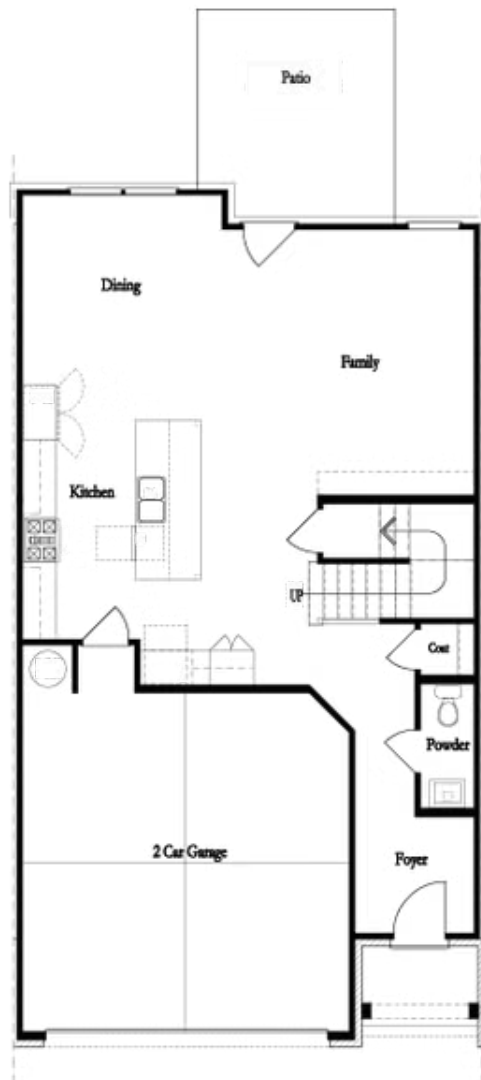
CONTACT OUR COMMUNITY SALES MANAGER
Call Us @ 470.248.2097



Unfinished Basement

Want to Know More
About This Home?

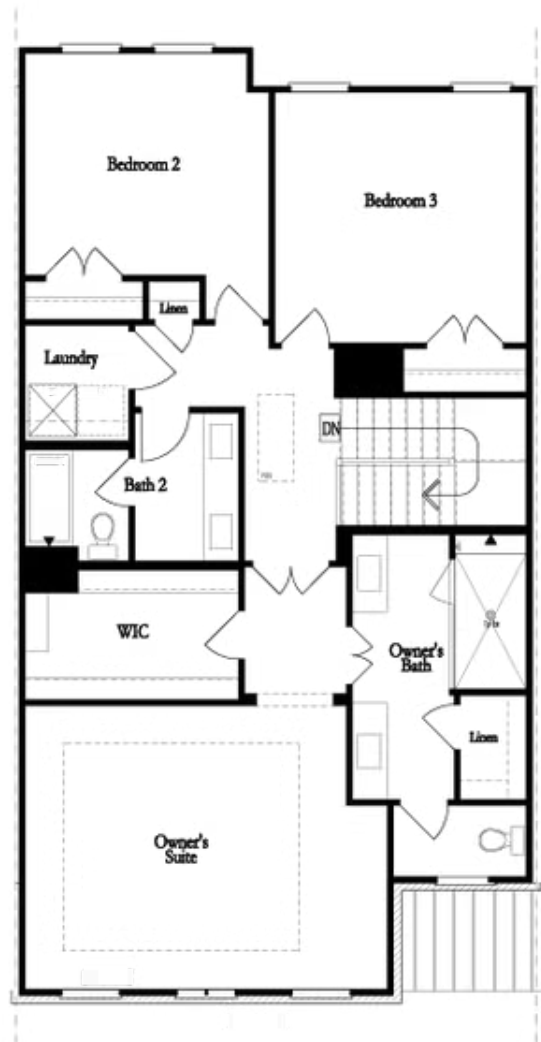
CONTACT OUR COMMUNITY SALES MANAGER
Call Us @ 470.248.2097



First Floor

**Want to Know More
About This Home?**

CONTACT OUR COMMUNITY SALES MANAGER
Call Us @ 470.248.2097

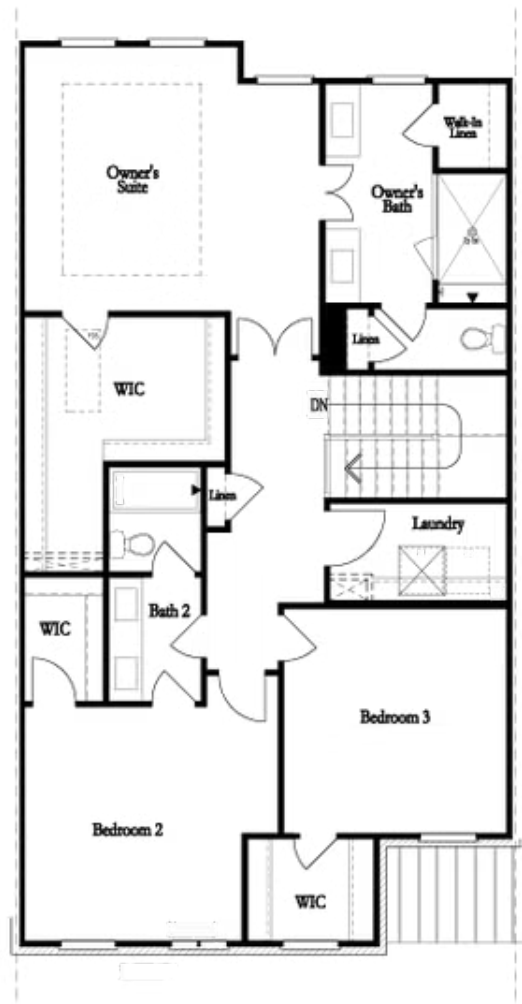


Second Floor
(Owner's Front)

Elevations G, H, J1, J3 & L

Want to Know More
About This Home?

CONTACT OUR COMMUNITY SALES MANAGER
Call Us @ 470.248.2097

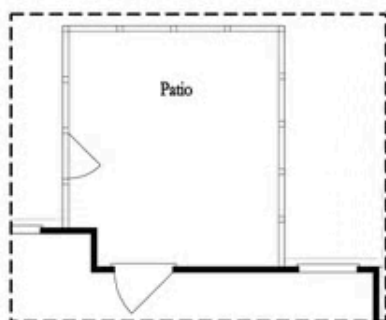


Second Floor
(Owner's Rear)

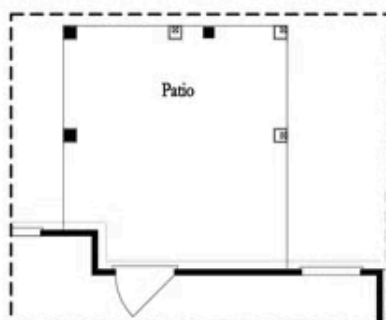
Elevations G, H, J1, J3 & L

Want to Know More
About This Home?

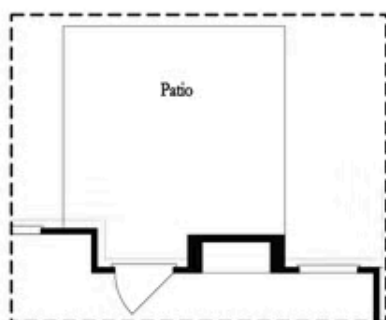
CONTACT OUR COMMUNITY SALES MANAGER
Call Us @ 470.248.2097



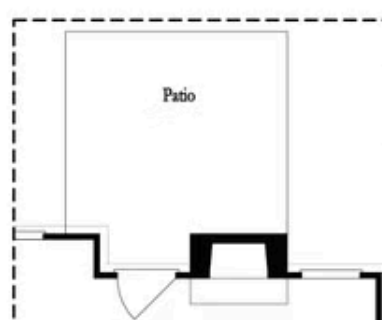
Opt. Screened Patio



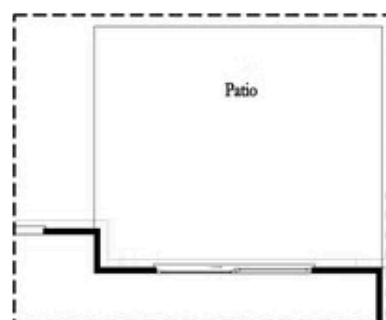
Opt. Coverd Patio



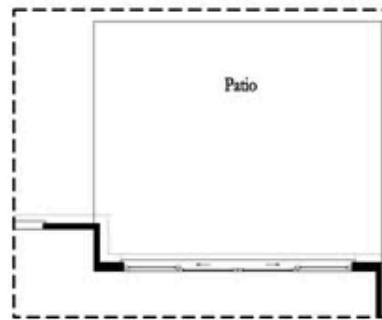
Opt. Linear Fireplace



Opt. Fireplace



Opt. 8 Foot Slider Door

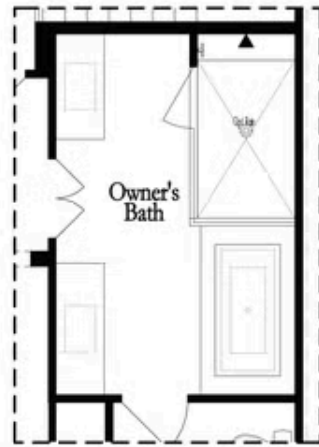


Opt. 12 Foot Slider Door

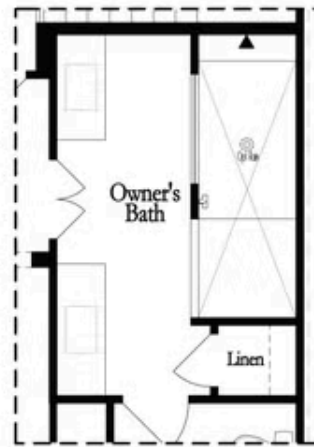
Main Level Options

Want to Know More
About This Home?

CONTACT OUR COMMUNITY SALES MANAGER
Call Us @ 470.248.2097

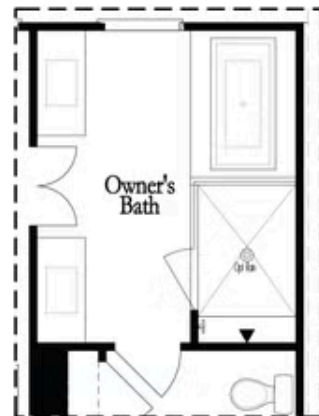


Opt. Shower/Tub



Opt. Walk-Through Shower

Owner's Front - Options



Opt. Shower/Tub



Opt. Walk-Through Shower

Owner's Rear - Options

Want to Know More
About This Home?

CONTACT OUR COMMUNITY SALES MANAGER
Call Us @ 470.248.2097