



PRICED AT  
**\$534,770**

 2030 Sq Ft

 3 Beds

 2.5 Baths

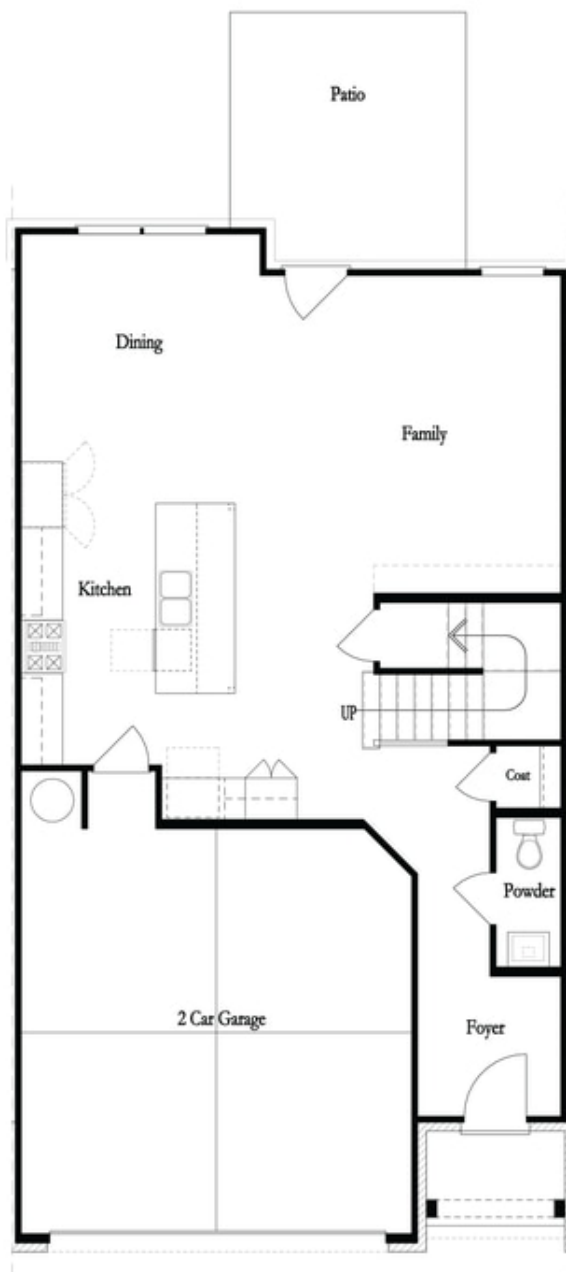
 2 Car Garage

 2.0 Story

**END UNIT : Quick Move in Home Estimated Close May/June 2023 - \*\*Elevate your life in 2023 with a new home by The Providence Group and \$5,000 towards closing cost when financing with one of Seller's 4 preferred lenders\*\*.Your new home will offer a 2 story design floor plan with entry on the main level, 2 garage in front and a cozy backyard. A Private foyer on the main level leads you to a Gourmet Kitchen with White Cabinets, Large island and dark quartz countertops that offer a modern feel. The main floor family room has a fireplace with quartzite surround and is open to the dining area and kitchen. The private patio off the family room is great for outdoor entertaining. When you head to the 2nd floor you will enter a spacious owner's suite that offers the Walk-in Shower and a separate Tub, 2 separate vanities with quartz countertops & walk in closet. The laundry room is located in the hallway on the upper level along with 2 secondary bedrooms and shared bath with dual vanity. Blinds are already included in this home. This community is in highly desirable location in unincorporated Gwinnett County and close to 3 ...**

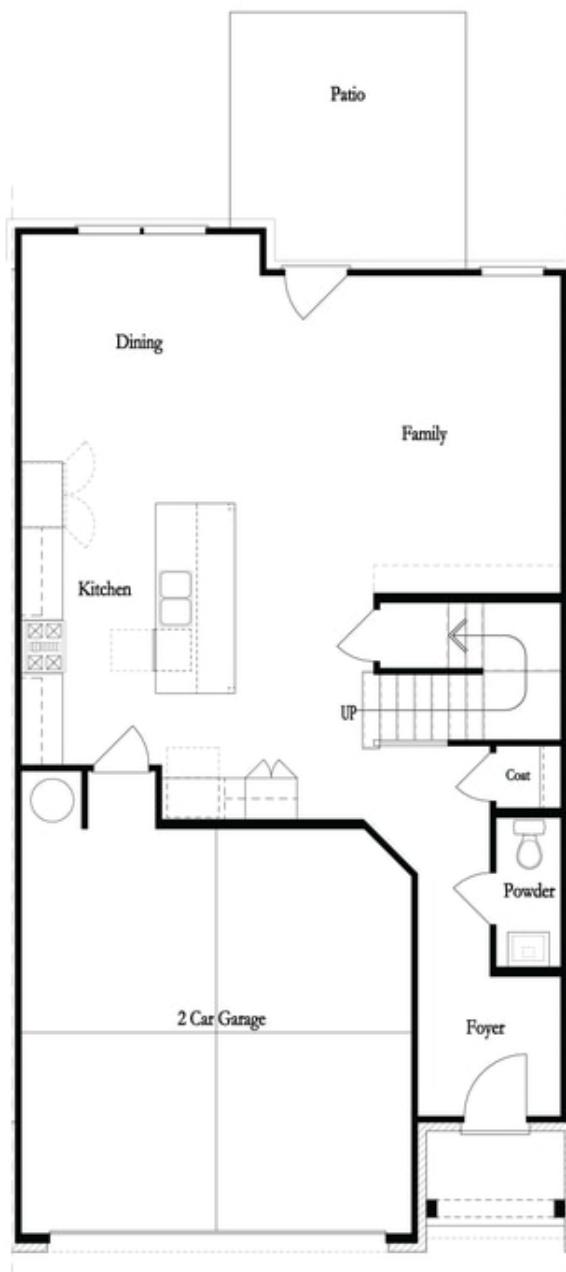
**Want to Know More  
About This Home?**

CONTACT OUR COMMUNITY SALES MANAGER  
Call Us @ 470-248-2097



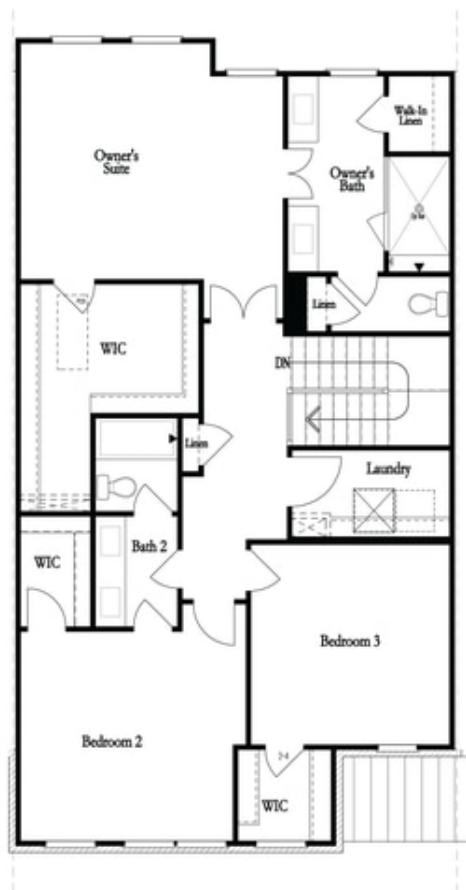
**Want to Know More  
About This Home?**

CONTACT OUR COMMUNITY SALES MANAGER  
Call Us @ 470-248-2097

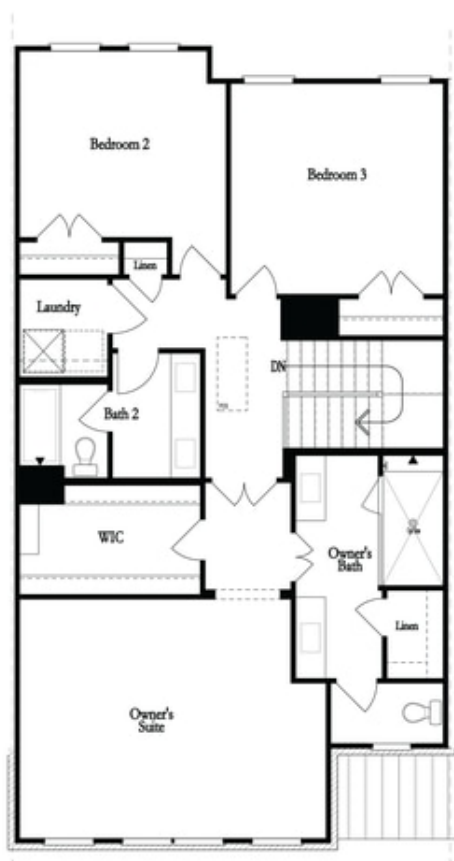


**Want to Know More  
About This Home?**

CONTACT OUR COMMUNITY SALES MANAGER  
Call Us @ 470-248-2097



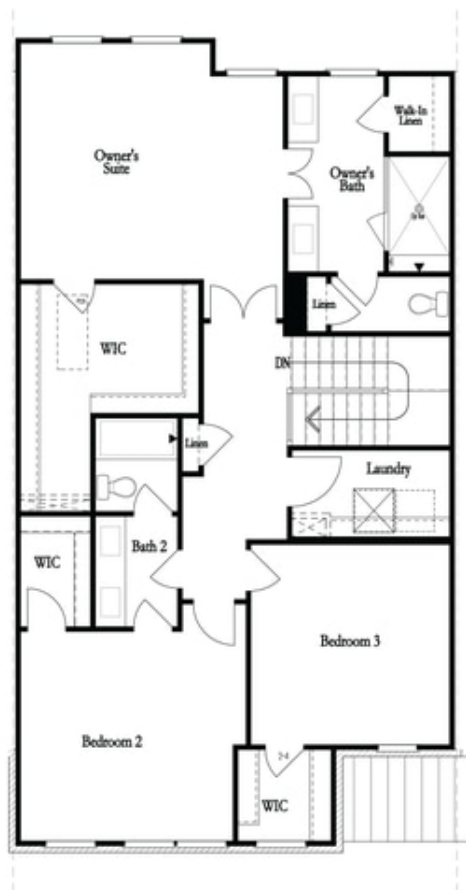
Second Floor - Owner's Rear



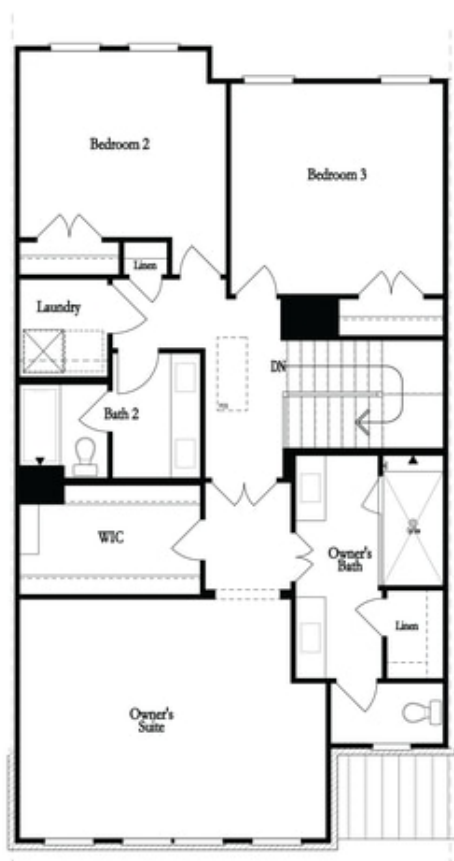
Second Floor - Owner's Front

**Want to Know More  
About This Home?**

CONTACT OUR COMMUNITY SALES MANAGER  
Call Us @ 470-248-2097



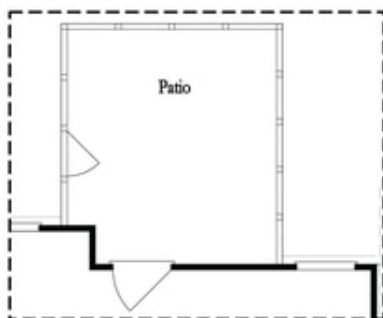
Second Floor - Owner's Rear



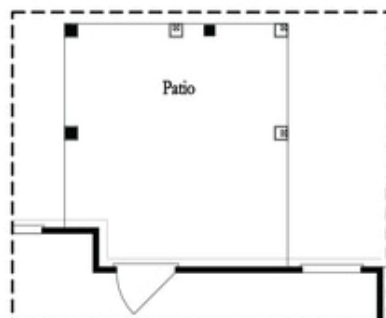
Second Floor - Owner's Front

**Want to Know More  
About This Home?**

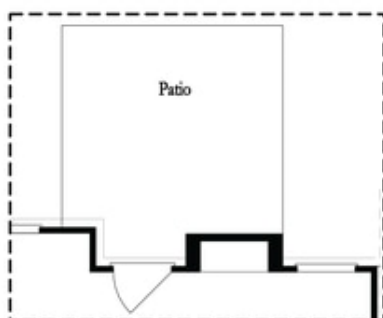
CONTACT OUR COMMUNITY SALES MANAGER  
Call Us @ 470-248-2097



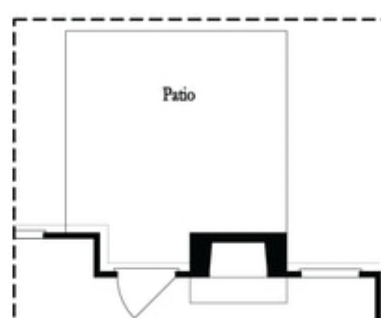
Opt. Screened Patio



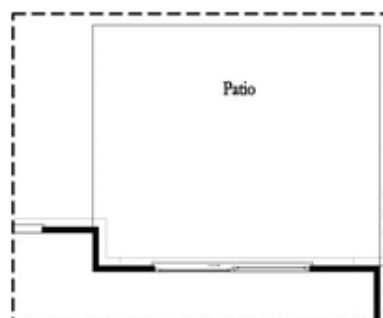
Opt. Coverd Patio



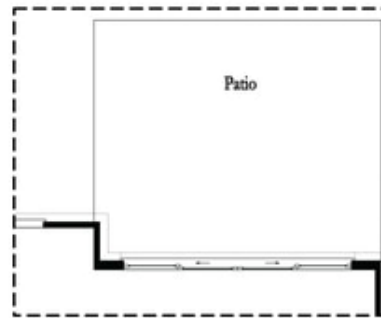
Opt. Linear Fireplace



Opt. Fireplace



Opt. 8 Foot Slider Door

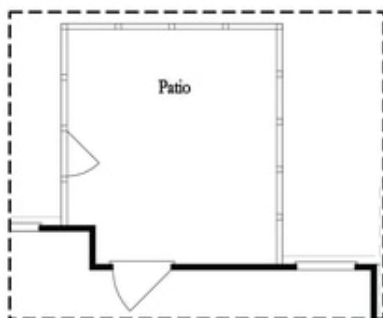


Opt. 12 Foot Slider Door

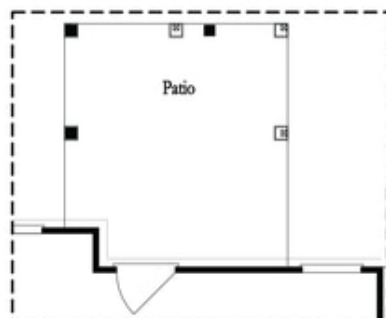
**Main Level Options**

**Want to Know More  
About This Home?**

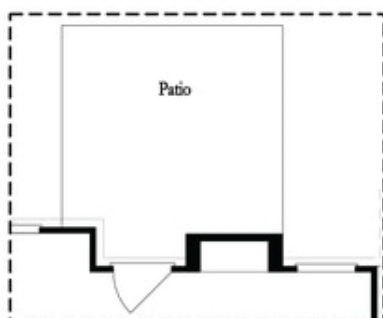
CONTACT OUR COMMUNITY SALES MANAGER  
Call Us @ 470-248-2097



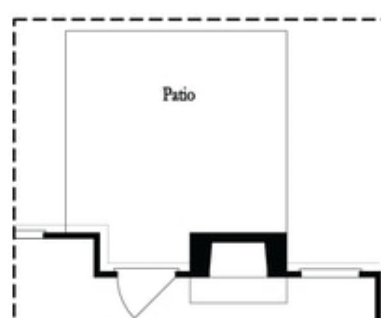
Opt. Screened Patio



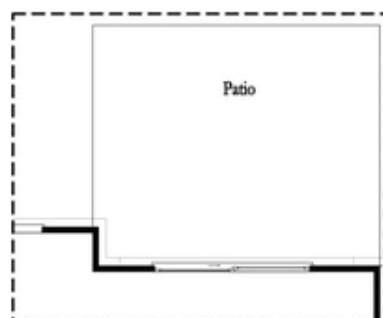
Opt. Coverd Patio



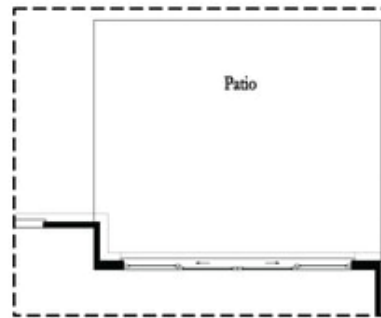
Opt. Linear Fireplace



Opt. Fireplace



Opt. 8 Foot Slider Door

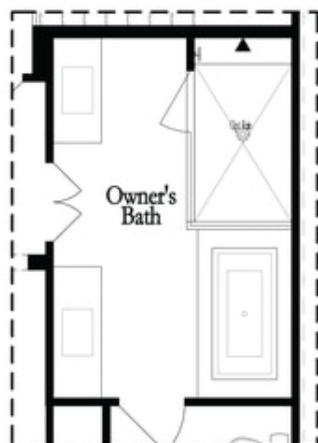


Opt. 12 Foot Slider Door

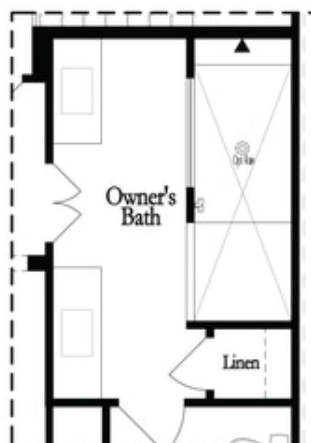
**Main Level Options**

**Want to Know More  
About This Home?**

CONTACT OUR COMMUNITY SALES MANAGER  
Call Us @ 470-248-2097

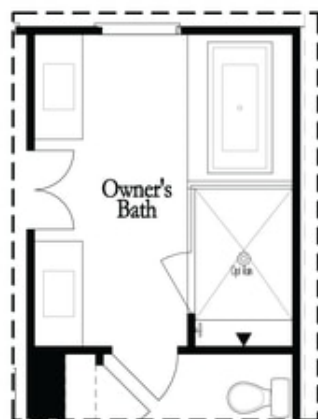


Opt. Shower/Tub

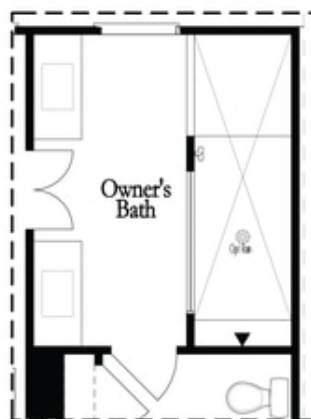


Opt. Walk-Through Shower

Owner's Front - Options



Opt. Shower/Tub



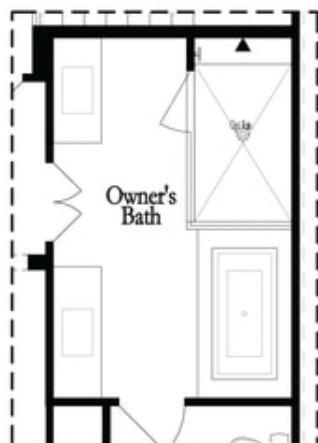
Opt. Walk-Through Shower

Owner's Rear - Options

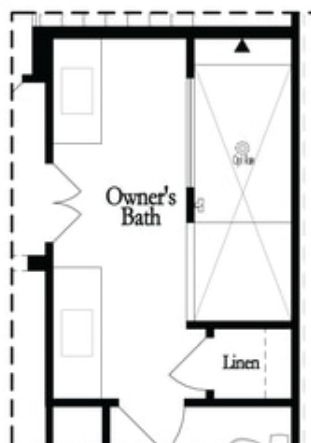
**Want to Know More  
About This Home?**

CONTACT OUR COMMUNITY SALES MANAGER  
Call Us @ 470-248-2097



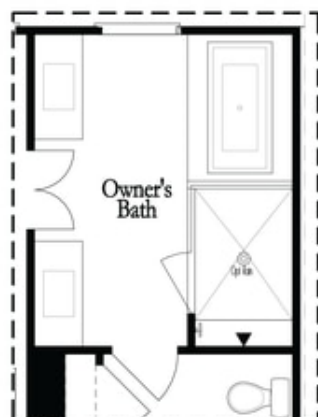


Opt. Shower/Tub

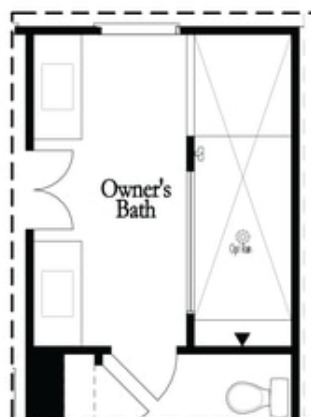


Opt. Walk-Through Shower

Owner's Front - Options



Opt. Shower/Tub



Opt. Walk-Through Shower

Owner's Rear - Options

Want to Know More  
About This Home?

CONTACT OUR COMMUNITY SALES MANAGER  
Call Us @ 470-248-2097