



PRICED AT
\$439,900

 1752 Sq Ft

 3 Beds

 2.5 Baths

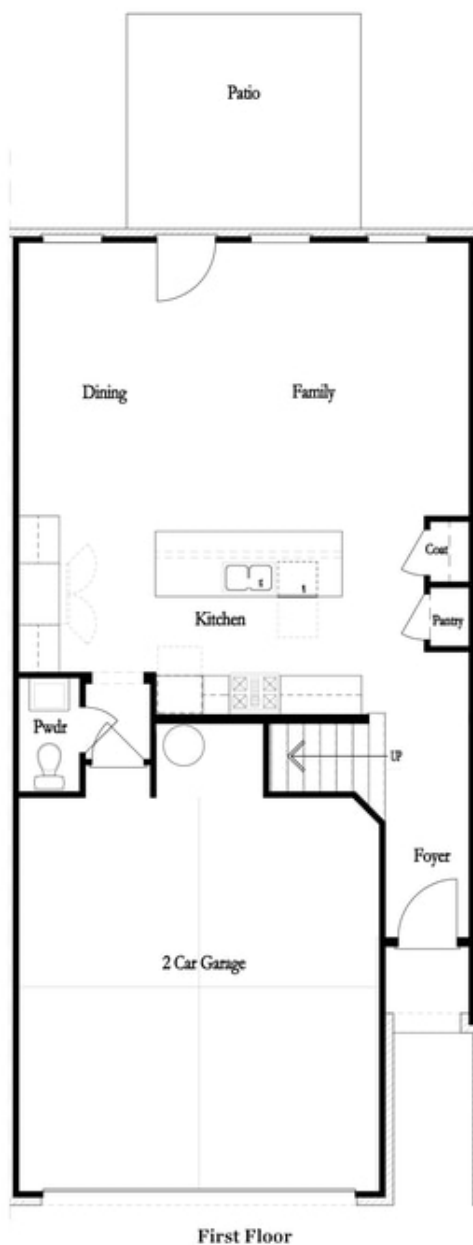
 2 Car Garage

 2.0 Story

END UNIT!!!! Elevate your life in 2023 with a new home by The Providence Group and \$5,000 towards closing cost when financing with one of Seller's 4 preferred lenders. Limited Time to pick out your Interior Selections!!! 2 story living with the Brittany townhome floor plan that features the entrance on the main level with front entry garage. The cozy fenced backyard includes a covered Patio for the best in outdoor entertaining. A Private foyer leads you to the open main floor with family room, dining room and Gourmet Kitchen. The kitchen has stainless appliances, quartz counters and a large island that overlooks the main floor living space. Upstairs you find a spacious owner's suite with a huge walk in shower and owners bath that offers a walk in shower, dual vanities with quartz countertops. 2 secondary bedrooms are on opposite end of hallway and have a shared bath. The laundry room is located on the upper level for easy convenience. This community is in a highly desirable location in unincorporated Gwinnett County and close to 3 vibrant cities - downtown Sugar Hill, Suwanee Town Center and Buford!! Incredible amenities will be Gated, Resort-style pool with covered cabana, grills, fireplace, ...

**Want to Know More
About This Home?**

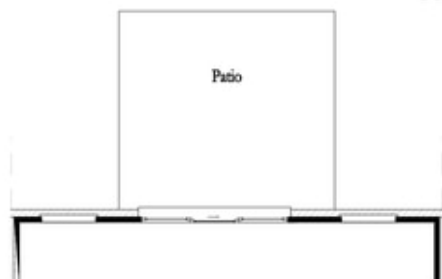
CONTACT OUR COMMUNITY SALES MANAGER
Call Us @ 470-248-2097



**Want to Know More
About This Home?**

CONTACT OUR COMMUNITY SALES MANAGER
Call Us @ 470-248-2097

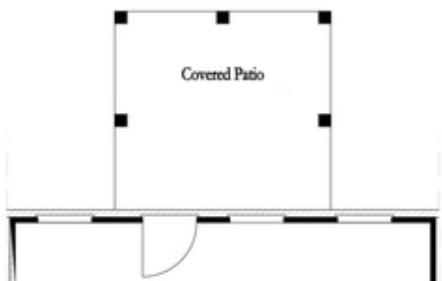
First Floor Options



8' Slider Door



Screened Patio



Covered Patio



Fireplace



Linear Fireplace

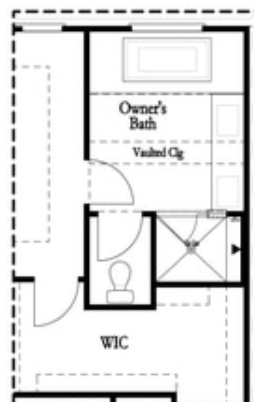
Want to Know More
About This Home?

CONTACT OUR COMMUNITY SALES MANAGER
Call Us @ 470-248-2097

Second Floor Options

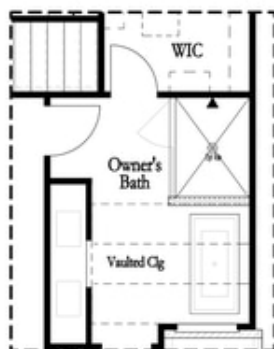


Shower with Freestanding Tub Combo

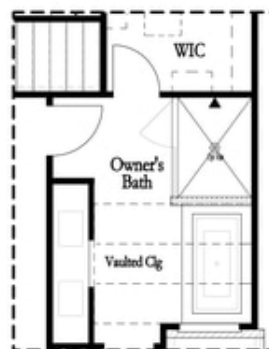


Shower with Decked Tub Combo

Owner's Rear Options



Shower with Freestanding Tub Combo



Shower with Decked Tub Combo

Owner's Front Options

**Want to Know More
About This Home?**

CONTACT OUR COMMUNITY SALES MANAGER
Call Us @ 470-248-2097