



PRICED AT  
**\$448,170**

 **1752 Sq Ft**

 **3 Beds**

 **2.5 Baths**

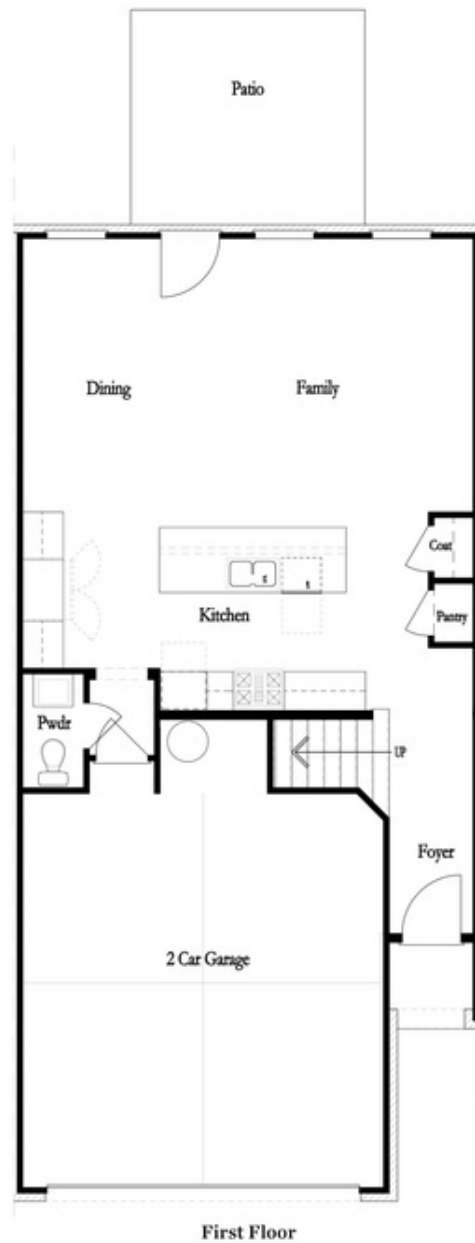
 **2 Car Garage**

 **2.0 Story**

**END UNIT!!!! Elevate your life in 2023 with a new home by The Providence Group and \$5,000 towards closing cost when financing with one of Seller's 4 preferred lenders. Limited Time to pick out your Interior Selections!!! 2 story living with the Brittany townhome floor plan that features the entrance on the main level with front entry garage. Enter through the sliding doors to the cozy fenced backyard that includes a covered Porch for the best in outdoor entertaining. A Private foyer leads you to the open main floor with family room, dining room and Gourmet Kitchen. The kitchen has stainless appliances, quartz counters and a large island that overlooks the main floor living space. Upstairs you find a spacious owner's suite that has a tray ceiling and Owners bath featuring a separate Tub and a shower, dual vanities with quartz countertops. 2 secondary bedrooms are on opposite end of hallway and have a shared bath. The laundry room is located on the upper level for easy convenience. This community is in a highly desirable location in unincorporated Gwinnett County and close to 3 vibrant cities - downtown Sugar Hill, Suwanee Town Center and Buford!! Incredible amenities will be Gated, ...**

**Want to Know More  
About This Home?**

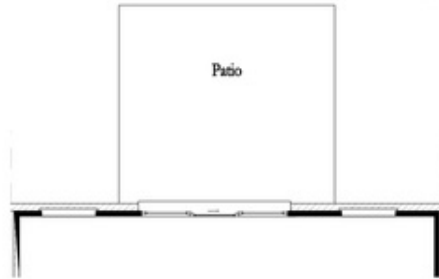
**CONTACT OUR COMMUNITY SALES MANAGER  
Call Us @ 470.248.2097**



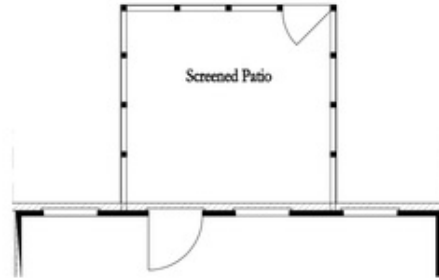
Want to Know More  
About This Home?

CONTACT OUR COMMUNITY SALES MANAGER  
Call Us @ 470.248.2097

First Floor Options



8' Slider Door



Screened Patio



Covered Patio



Fireplace

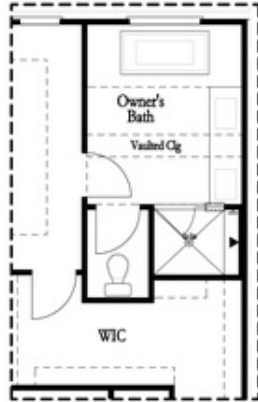


Linear Fireplace

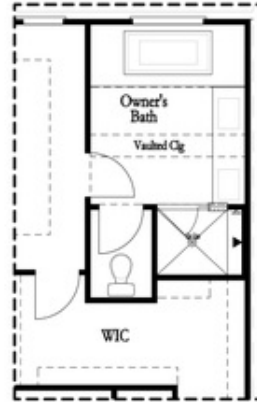
Want to Know More  
 About This Home?

CONTACT OUR COMMUNITY SALES MANAGER  
 Call Us @ 470.248.2097

Second Floor Options

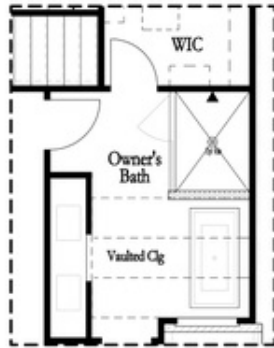


Shower with Freestanding Tub Combo

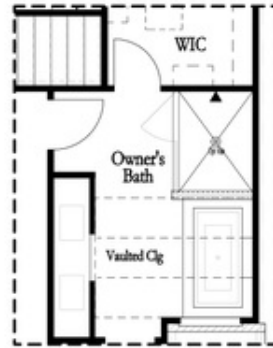


Shower with Decked Tub Combo

Owner's Rear Options



Shower with Freestanding Tub Combo



Shower with Decked Tub Combo

Owner's Front Options

Want to Know More  
 About This Home?

CONTACT OUR COMMUNITY SALES MANAGER  
 Call Us @ 470.248.2097